



RFP Information Meeting – March 6, 2023

Solid Waste Management Facilities Operations, Maintenance & Hauling Services



The Region of BC's Best

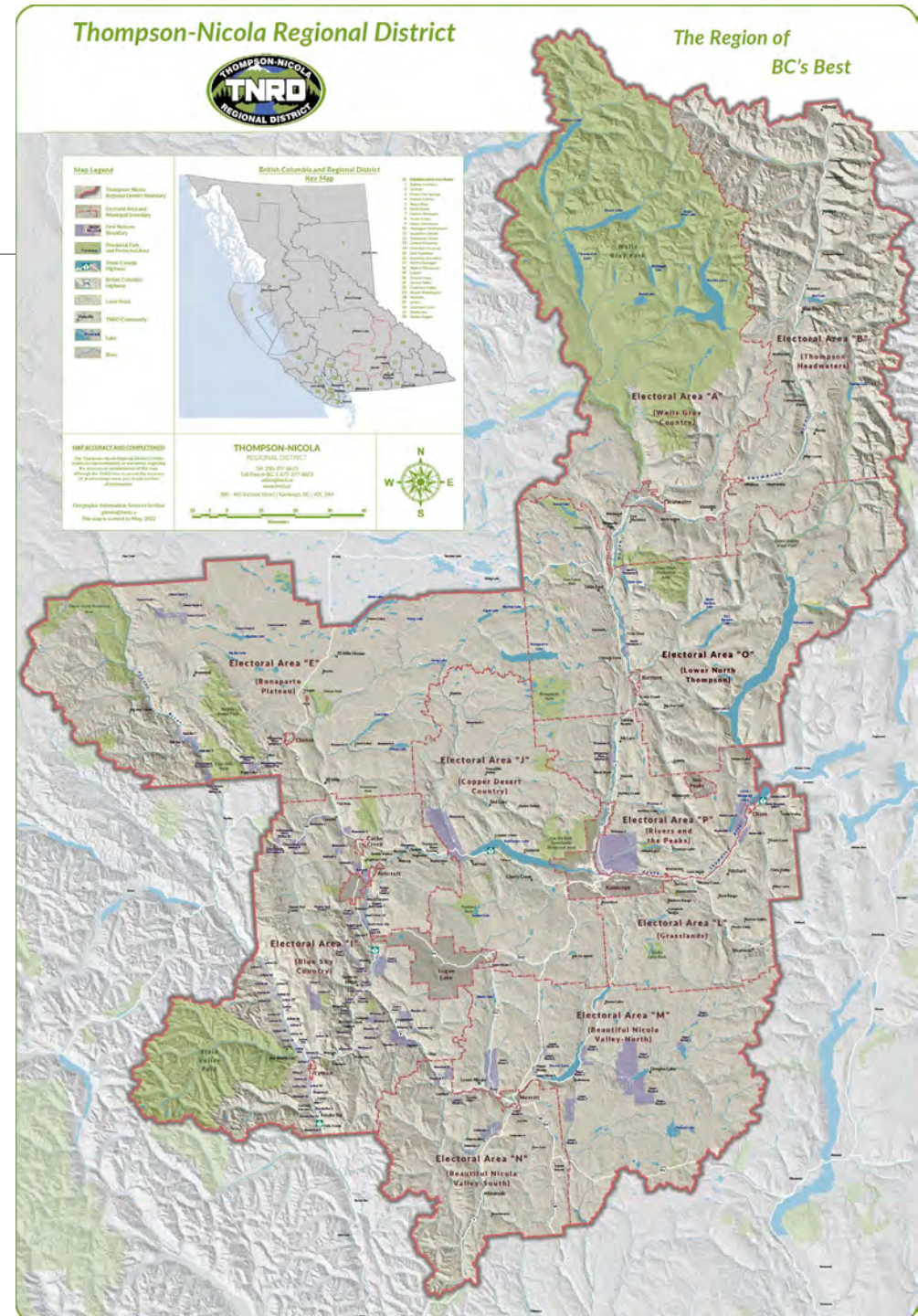
Regional Solid Waste Management Zones being Proposed

Nicola Valley & Western TNRD

- 6 Eco-Depots
- 1 Landfill
- 5 Transfer Stations

Thompson Valley

- 4 Eco-Depots
 - +1 Hauling Only
- 1 Landfill
- 11 Transfer Stations

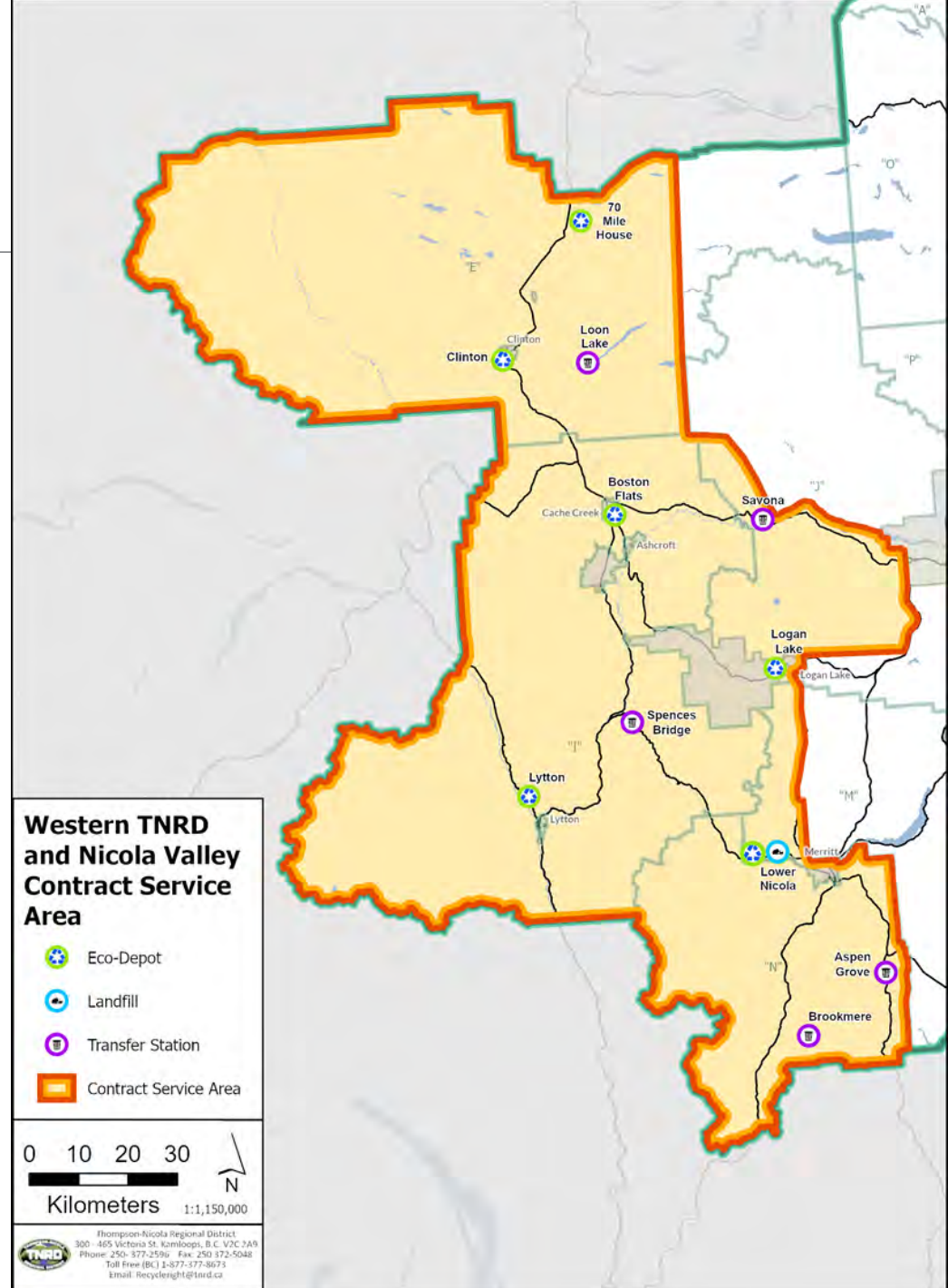


Nicola Valley & Western TNRD



Nicola Valley & Western TNRD

- 70 Mile House Eco-Depot
- Aspen Grove Transfer Station
- Boston Flats Eco-Depot
- Clinton Eco-Depot
- Logan Lake Eco-Depot
- Loon Lake Transfer Station
- Lower Nicola Eco-Depot
- Lower Nicola Landfill
- Lytton Eco-Depot
- Savona Transfer Station
- Spences Bridge Transfer Station
- Brookmere Transfer Station



Hauling Services



Nicola Valley & Western TNRD Hauling Services

- **Weight based pricing for hauling majority of loads**
- **50 Yard Bins, 2 B-Train Trailers and Mega Bags**
 - Supplied by TNRD
 - Coordinating repairs and maintenance responsibility of Contractor
 - Repair and maintenance costs billed direct to TNRD
- **Waste Destinations**
 - Primary - Campbell Hill Landfill in Cache Creek
 - Secondary – Lower Nicola Landfill 8 km west of Merritt
- **Recycling Destinations**
 - Emterra in Kamloops
 - Cascades Recovery in Kelowna
 - Gold Trail in 100 Mile
 - Mega bags consolidated at larger TNRD facilities

Nicola Valley & Western TNRD Hauling Services

- Disposal fees paid directly by TNRD
- Lower Nicola or Boston Flats may be used for storage/staging
 - Other sites can be proposed
- Sub-contracting permitted. Proposals must be clear about details

Site Operations & Maintenance Services



Nicola Valley & Western TNRD Site Operations & Maintenance Services

- All day-to-day operation including providing trained site attendant(s) and at each location
- Prime Contractor designation
- Supply and maintain OH&S Plan
- Snow removal included in site operations for all sites
- Mobile equipment for bin compaction and stockpile management – permanent & roving

Nicola Valley & Western TNRD Site Operations & Maintenance Services

- Lower Nicola – moving full 50-yard bins from Eco-Depot to Landfill included in monthly Operations & Maintenance price
- Sub-contracting permitted. Proposals must be clear about details
- Proponents are permitted to do site visits during regular hours of operation. Must identify themselves and not disrupt operations or site attendants. Follow any safety requirements of Prime Contractor.

Nicola Valley & Western TNRD Site Operations & Maintenance Services – Mobile Equipment

- Required year-round at Lower Nicola, Logan Lake & Boston Flats Eco-Depots
- Primary use is
 - Compacting bins
 - Snow removal/de-icing
 - Pushing/loading MSW & recycling into bins/Trailer
 - Consolidating stockpiles
 - Minor road repairs
 - Misc. site work – moving lock blocks, digging sign posts etc.
- Mobile equipment to be provided at *forced work hourly rate* within 72 hours of TNRD request for onsite work (other than snow removal or bin compaction)

Nicola Valley & Western TNRD Site Operations & Maintenance Services – Snow Removal

- Significant component of monthly Operations & Maintenance Services
- Snow removal must meet approved Levels of Service for snow removal and sanding/de-icing prior to posted hours of operation at all sites
 - >2cm requires snow removal
 - <2cm sanding/de-icing
- May sub-contract a portion or all

Lower Nicola Landfill Services



Lower Nicola Landfill Services

- All day-to-day operation of the Lower Nicola Landfill
- ~10,000 tonnes/year MSW & DRC
- Prime Contractor designation
- Supply and maintain OH&S Plan
- Provide equipment for daily acceptance, placement, spreading, compaction, cover and control of MSW & DRC

Lower Nicola Landfill Services

- Ability to adhere to TNRD's engineered fill plan & other applicable guidance materials
- Maintain road infrastructure – dust control, grading & snow removal
- Completing operational activities
- Prevent/control/suppress fire
- Min. 1 staff on site member of SWANA and Manager of Landfill Operations (MOLO)
 - MOLO withing 6 months of Term commencement

Nicola Valley & Western TNRD Facilities Overview

6 Eco-Depots
1 Landfill
5 Transfer Stations

Locations

- 70 Mile House Eco-Depot
- Aspen Grove Transfer Station
- Boston Flats Eco-Depot
- Clinton Eco-Depot
- Logan Lake Eco-Depot
- Loon Lake Transfer Station
- Lower Nicola Eco-Depot
- Lower Nicola Landfill
- Lytton Eco-Depot
- Savona Transfer Station
- Spences Bridge Transfer Station
- Brookmere Transfer Station

Eco-Depot with Landfill

Lower Nicola Eco-Depot

Hours of Operation:

Monday-Sunday

8:00am-4:00pm

Materials Accepted:

- ✓ Curbside recycling
- ✓ Depot recycling
- ✓ Commercial cardboard/containers
- ✓ Yard waste/grass
- ✓ Scrap metal
- ✓ Major appliances
- ✓ Tires
- ✓ Used oil/containers/filters
- ✓ Paint/pesticides/flammable liquids
- ✓ Electronics
- ✓ Small appliances
- ✓ Batteries
- ✓ Clothing donation
- ✓ Light Recycle
- ✓ Wood waste
- ✓ Mattresses/Boxsprings
- ✓ Asphalt Shingles
- ✓ Solid Waste
- ✓ Demo/Reno/Construction
- ✓ Concrete/asphalt

Special Considerations:

- ✓ Receives City of Merritt curbside recycling loads



Lower Nicola Landfill

Hours of Operation:

Monday-Sunday
8:00am-4:00pm

Materials Accepted:

- ✓ Solid waste from Nicola Valley and portions of Western TNRD

Special Considerations:

In 2021:

~10,900t

~9,000t MSW

~1,800t DRC

- Natural control facility
- No Landfill Gas management plan
- Groundwater monitoring wells in place
- Biocover in place on waste slopes



Eco-Depot with Building

Boston Flats Eco-Depot

Hours of Operation:

Tuesday-Sunday
8:00am-4:00pm

Materials Accepted:

- | | |
|--------------------------------------|--------------------------|
| ✓ Residential recycling | ✓ Electronics |
| ✓ Commercial cardboard/containers | ✓ Small appliances |
| ✓ Yard waste/grass | ✓ Batteries |
| ✓ Scrap metal | ✓ Light Recycle |
| ✓ Major appliances | ✓ Wood waste |
| ✓ Tires | ✓ Mattresses/Boxsprings |
| ✓ Used oil/containers/filters | ✓ Asphalt Shingles |
| ✓ Paint/pesticides/flammable liquids | ✓ Solid Waste |
| | ✓ Demo/Reno/Construction |
| | ✓ Concrete/asphalt |

Special Considerations:

- ✓ Enclosed building and loading dock for receiving and shipping recyclables
- ✓ Receives satellite depot recycling from Loon Lake & Savona
- ✓ Running water and washroom facility



The Region of BC's Best

Eco-Depot with Hydraulic Lid Over-Structure & B-Train Trailers or Bins

Logan Lake Eco-Depot

Winter

(Nov 1-March 31)

Tuesday-Saturday
8:00am-4:00pm

Summer

(April 1-Oct 31)

Tuesday-Sunday
8:00am-4:00pm

Materials Accepted:

- ✓ Residential recycling
- ✓ Commercial cardboard/containers
- ✓ Yard waste/grass
- ✓ Scrap metal
- ✓ Major appliances
- ✓ Tires
- ✓ Used oil/containers/filters
- ✓ Paint/pesticides/flammable liquids
- ✓ Electronics
- ✓ Small appliances
- ✓ Batteries
- ✓ Light Recycle
- ✓ Wood waste
- ✓ Clothing donation
- ✓ Solid Waste
- ✓ Demo/Reno/Construction
- ✓ Concrete/asphalt

Special Considerations:

- ✓ Receives curbside waste/recycling from District of Logan Lake
- ✓ Powered by an off-grid, diesel/solar generation system
- ✓ B-Train trailer



The Region of BC's Best

Eco-Depot with Hydraulic Lid Over-Structure & B-Train Trailers or Bins

Clinton Eco-Depot

Hours of Operation:

Friday-Monday
8:00am-4:00pm

Materials Accepted:

- ✓ Residential recycling
- ✓ Commercial cardboard/containers
- ✓ Yard waste/grass
- ✓ Scrap metal
- ✓ Major appliances
- ✓ Tires
- ✓ Used oil/containers/filters
- ✓ Paint/pesticides/flammable liquids
- ✓ Electronics
- ✓ Small appliances
- ✓ Batteries
- ✓ Clothing donation
- ✓ Light Recycle
- ✓ Wood waste
- ✓ Solid Waste
- ✓ Demo/Reno/Construction
- ✓ Concrete/asphalt

Special Considerations:

- ✓ Historically a B-Train site but currently using 50-yard bins for solid waste



Eco-Depot with Hydraulic Lid Over-Structure & B-Train Trailers or Bins

Lytton Eco-Depot

Hours of Operation:

Wednesday-Sunday

10:00am-4:00pm

Materials Accepted:

- ✓ Residential recycling
- ✓ Commercial cardboard/containers
- ✓ Yard waste/grass
- ✓ Scrap metal
- ✓ Major appliances
- ✓ Tires
- ✓ Used oil/containers/filters
- ✓ Paint/pesticides/flammable liquids
- ✓ Electronics
- ✓ Small appliances
- ✓ Batteries
- ✓ Clothing donation
- ✓ Light Recycle
- ✓ Wood waste
- ✓ Solid Waste
- ✓ Demo/Reno/Construction
- ✓ Concrete/asphalt

Special Considerations:

- ✓ Receives many First Nation community solid waste/recycling
- ✓ Historically a B-Train site but currently using 50-yard bins for solid waste
- ✓ Receives mega bags from Spences Bridge transfer station



Eco-Depot (base)

70 Mile Eco-Depot

Winter

(Nov 1-March 31)

Mon, Wed, Sat, Sun
10:00am-4:00pm

Summer

(April 1-Oct 31)

Saturday-Wednesday
8:00am-4:00pm

Materials Accepted:

- ✓ Residential recycling
- ✓ Commercial cardboard/containers
- ✓ Yard waste/grass
- ✓ Scrap metal
- ✓ Major appliances
- ✓ Tires
- ✓ Used oil/containers/filters
- ✓ Paint/pesticides/flammable liquids
- ✓ Electronics
- ✓ Small appliances
- ✓ Batteries
- ✓ Clothing donation
- ✓ Wood waste
- ✓ Mattresses/Boxsprings
- ✓ Solid Waste
- ✓ Demo/Reno/Construction
- ✓ Concrete/asphalt

Special Considerations:

- ✓ For safety a landfill gas monitoring system is in place administered by TNRD



Transfer Station Plus

Loon Lake Transfer Station

Winter

(Nov 1-March 31)

Wednesday & Sunday
9:00am-1:00pm

Summer

(April 1-Oct 31)

Wed, Sat, Sun
9:00am-5:00pm

Materials Accepted:

- ✓ Residential recycling
- ✓ Yard waste/grass
- ✓ Scrap metal
- ✓ Major appliances
- ✓ Batteries
- ✓ Solid Waste
- ✓ Demo/Reno/Construction

Special Considerations:

- ✓ Mega bags hauled to Boston Flats for consolidation



Transfer Station Plus

Savona Transfer Station

Monday & Thursday
9:00am-5:00pm

Sunday
8:00am-4:00pm

Materials Accepted:

- ✓ Residential recycling
- ✓ Yard waste/grass
- ✓ Scrap metal
- ✓ Major appliances
- ✓ Batteries
- ✓ Used oil/filters/containers
- ✓ Tires
- ✓ Clothing donation
- ✓ Solid Waste
- ✓ Demo/Reno/Construction

Special Considerations:

- ✓ Receives curbside waste from Skeetchestn Indian Band



Transfer Station Plus

Spences Bridge Transfer Station

Hours of Operation:

Wednesday & Sunday
8:00am-4:00pm

Materials Accepted:

- ✓ Residential recycling
- ✓ Yard waste/grass
- ✓ Scrap metal & propane tanks
- ✓ Major appliances
- ✓ Batteries
- ✓ Used oil/filters/containers
- ✓ Solid Waste

Special Considerations:

- ✓ Mega bags hauled to Lytton for consolidation



Transfer Station (base)

Aspen Grove Transfer Station

Hours of Operation:

Thursday

9:00am-1:00pm

Materials Accepted:

- ✓ Residential recycling
- ✓ Household batteries
- ✓ Solid Waste

Special Considerations:

- ✓ Mega bags hauled to Lower Nicola for consolidation



Transfer Station (base)

Brookmere Transfer Station

Hours of Operation:

Sunday

12:00pm-4:00pm

Materials Accepted:

- ✓ Residential recycling
- ✓ Household batteries
- ✓ Solid Waste

Special Considerations:

- ✓ Mega bags hauled to Lower Nicola for consolidation



Thompson Valley



Thompson Valley

- Agate Bay Transfer Station
- Black Pines Transfer Station
- * *Blue River Eco-Depot*
- Clearwater Eco-Depot
- Eagan Lake Transfer Station
- Heffley Creek Eco-Depot
- Heffley Creek Landfill
- Knutsford Transfer Station
- Lac Le Jeune Transfer Station
- Little Fort Transfer Station
- Louis Creek Eco-Depot
- Paul Lake Transfer Station
- South Thompson Eco-Depot
- Sun Peaks Transfer Station
- Tranquille Valley Transfer Station
- Vavenby Transfer Station
- Westwold Transfer Station

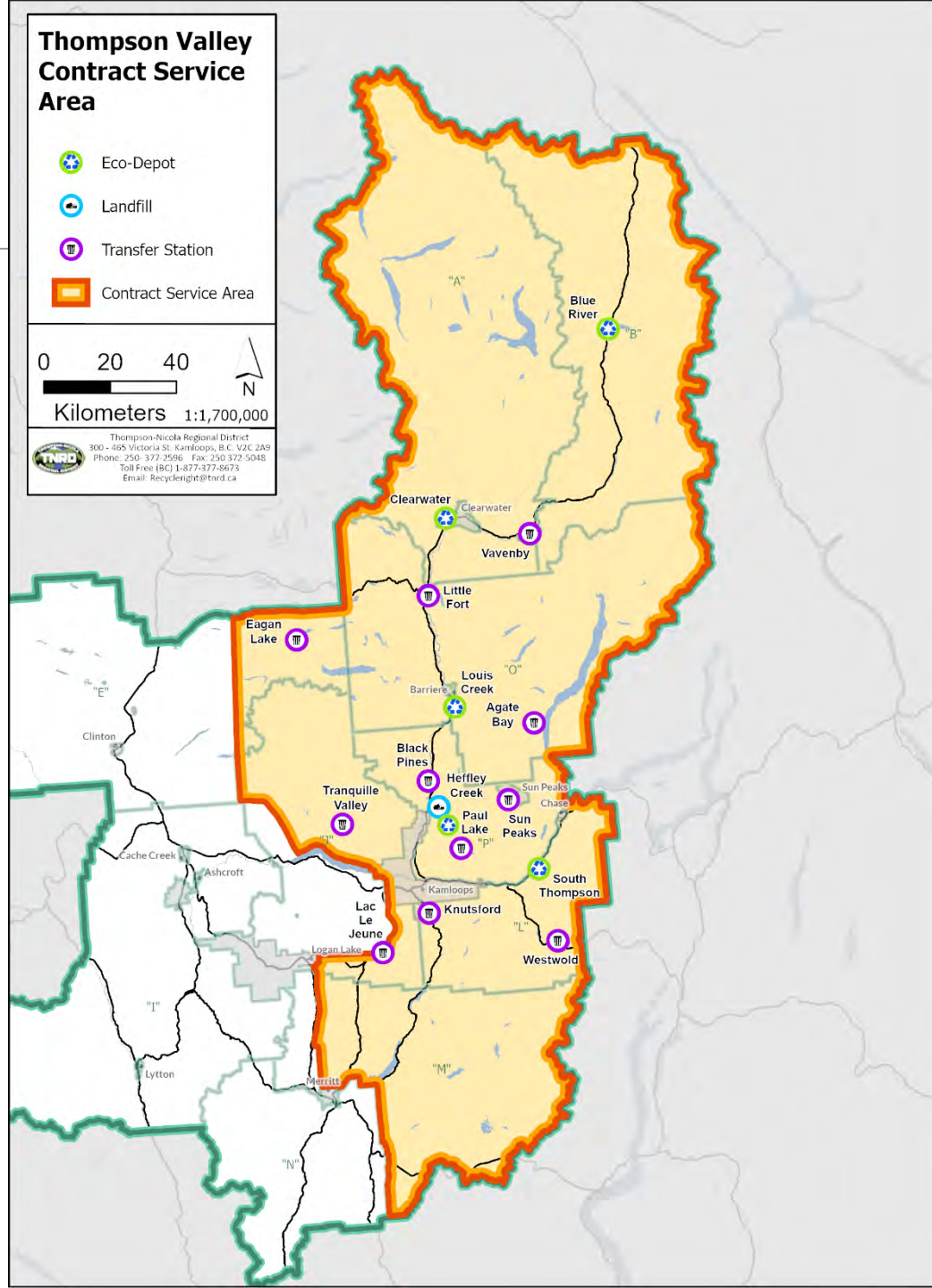
*Hauling service only

Thompson Valley Contract Service Area

- Eco-Depot
- Landfill
- Transfer Station
- Contract Service Area

0 20 40
Kilometers 1:1,700,000

Thompson-Nicola Regional District
300 - 405 Victoria St. Kamloops, B.C. V2C 2A9
Phone: 250-377-2596 Fax: 250-372-5048
Toll Free (BC) 1-877-377-8673
Email: Recycleinfo@tnrd.ca



Hauling Services



Thompson Valley Hauling Services

- **Weight based pricing for hauling majority of loads**
- **50-Yard Bins, 8 B-Train Trailers and Mega Bags**
 - Supplied by TNRD
 - Coordinating repairs and maintenance responsibility of Contractor
 - Repair and maintenance costs billed direct to TNRD
- **Waste Destinations**
 - Primary – Mission Flats Landfill in Kamloops & Heffley Creek Landfill
 - Secondary – Lower Nicola Landfill 8 km west of Merritt
 - Tertiary – Campbell Hill Landfill in Cache Creek
- **Recycling Destinations**
 - Emterra in Kamloops
 - Cascades Recovery in Kelowna
 - WS Salmon Arm in Armstrong
 - Gold Trail Recycling in 100 Mile House
 - Mega bags consolidated at larger TNRD facilities

Thompson Valley Hauling Services

- Disposal fees paid directly by TNRD
- Heffley Creek or Clearwater may be used for storage/staging
 - Other sites can be proposed
- Sub-contracting permitted. Proposals must be clear about details
- Blue River Eco-Depot requires hauling service only
 - 50-yard bins of MSW, curbside recycling, DRC & Recycling Mega Bags

Site Operations & Maintenance Services



Thompson Valley Site Operations & Maintenance Services

- All day-to-day operation including providing trained site attendant(s) and at each location
- Prime Contractor designation
- Supply and maintain OH&S Plan
- Snow removal included in site operations for all sites
- Mobile equipment for bin compaction and stockpile management – permanent & roving

Thompson Valley Site Operations & Maintenance Services

- Heffley Creek – moving full 50-yard bins from Eco-Depot to Landfill included in monthly Operations & Maintenance price
- Sub-contracting permitted. Proposals must be clear about details
- Proponents are permitted to do site visits during regular hours of operation. Must identify themselves and not disrupt operations or site attendants. Follow any safety requirements of Prime Contractor

Thompson Valley Site Operations & Maintenance Services – Mobile Equipment

- Required year-round at Clearwater, Heffley Creek, Louis Creek & South Thompson
- Primary use is
 - Compacting bins
 - Snow removal/de-icing
 - Pushing/loading MSW & recycling into bins/Trailer
 - Consolidating stockpiles
 - Minor road repairs
 - Misc. site work – moving lock blocks, digging sign posts etc.
- Mobile equipment to be provided at *forced work hourly rate* within 72 hours of TNRD request for onsite work (other than snow removal or bin compaction)

Thompson Valley Site Operations & Maintenance Services – Snow Removal

- Significant component of monthly Operations & Maintenance Services
- Snow removal must meet approved Levels of Service for snow removal and sanding/de-icing prior to posted hours of operation at all sites
 - >2cm requires snow removal
 - <2cm sanding/de-icing
- May sub-contract a portion or all

Heffley Creek Landfill Services



Heffley Creek Landfill Services

- All day-to-day use of the Heffley Creek Landfill are managed by Eco-Depot staff
- DRC windrows are placed and packed on average 2x/week
- Only accepts Demolition/Renovation/Construction
- ~3,900 tonnes/year
- Prime Contractor designation
- Supply and maintain OH&S Plan
- Provide equipment for placement, spreading, compaction, cover and control of DRC
- Ability to adhere to TNRD's engineered fill plan & other applicable guidance materials

Heffley Creek Landfill Services

- Maintain road infrastructure – grading & snow removal
- Prevent/control/suppress fire
- Min. 1 staff on site member of SWANA and Manager of Landfill Operations (MOLO)
 - MOLO withing 6 months of Term commencement
- Can submit monthly price or *Forced Equipment Rates*

Thompson Valley Facilities Overview

4 Eco-Depots + 1 Hauling Only
1 Landfill
11 Transfer Stations

Locations

- Agate Bay Transfer Station
- Black Pines Transfer Station
- * *Blue River Eco-Depot*
- Clearwater Eco-Depot
- Eagan Lake Transfer Station
- Heffley Creek Eco-Depot
- Heffley Creek Landfill
- Knutsford Transfer Station
- Lac Le Jeune Transfer Station
- Little Fort Transfer Station
- Louis Creek Eco-Depot
- Paul Lake Transfer Station
- South Thompson Eco-Depot
- Sun Peaks Transfer Station
- Tranquille Valley Transfer Station
- Vavenby Transfer Station
- Westwold Transfer Station

*Hauling Only

Eco-Depot with Landfill

Heffley Creek Eco-Depot

Winter

(Nov 1-March 31)

Tuesday-Saturday
8:00am-4:00pm

Summer

(April 1-Oct 31)

Tuesday-Sunday
8:00am-4:00pm

Materials Accepted:

- ✓ Residential recycling
- ✓ Commercial cardboard/containers
- ✓ Yard waste/grass
- ✓ Scrap metal
- ✓ Major appliances
- ✓ Tires
- ✓ Used oil/containers/filters
- ✓ Paint/pesticides/flammable liquids
- ✓ Electronics
- ✓ Small appliances
- ✓ Batteries
- ✓ Clothing donation
- ✓ Light Recycle
- ✓ Wood waste
- ✓ Mattresses/Boxsprings
- ✓ Asphalt Shingles
- ✓ Solid Waste
- ✓ Demo/Reno/Construction
- ✓ Concrete/asphalt

Special Considerations:

- ✓ Receiving facility for DRC from Thompson Valley and some Western TNRD sites



Heffley Creek Landfill

Winter

(Nov 1-March 31)

Tuesday-Saturday
8:00am-4:00pm

Summer

(April 1-Oct 31)

Tuesday-Sunday
8:00am-4:00pm

Materials Accepted:

- ✓ Demo/Reno/Construction
- ✓ Land-clearing debris & tree stumps
- ✓ Disaster debris (flood/fire)
- ✓ Concrete/asphalt

Special Considerations:

In 2021:

~3,900t DRC

- ✓ DLC stockpile on landfill footprint
- ✓ Maintenance facility for roll-off bins is adjacent to this facility
- ✓ Contaminated soil bio-pad on site operated by Secure Energy



Eco-Depots with Building

Clearwater Eco-Depot

Hours of Operation:

Tuesday-Sunday

8:00am-4:00pm

Materials Accepted:

- ✓ Residential recycling
- ✓ Commercial cardboard/containers
- ✓ Yard waste/grass
- ✓ Scrap metal
- ✓ Propane tanks
- ✓ Major appliances
- ✓ Tires
- ✓ Used oil/containers/filters
- ✓ Paint/pesticides/flammable liquids
- ✓ Electronics
- ✓ Small appliances
- ✓ Batteries
- ✓ Light Recycle
- ✓ Wood waste
- ✓ Mattresses/Boxsprings
- ✓ Asphalt Shingles
- ✓ Solid Waste
- ✓ Demo/Reno/Construction
- ✓ Concrete/asphalt

Special Considerations:

- ✓ Two B-Train trailers for MSW and Recycling
- ✓ Receives mega bags from Blue River, Egan Lake, Vavenby and Little Fort for consolidation



The Region of BC's Best

Eco-Depots with Building

Louis Creek Eco-Depot

Winter

(Nov 1-March 31)

Tuesday-Saturday
8:00am-4:00pm

Summer

(April 1-Oct 31)

Tuesday-Sunday
8:00am-4:00pm

Materials Accepted:

- ✓ Residential recycling
- ✓ Commercial cardboard/containers
- ✓ Yard waste/grass
- ✓ Scrap metal
- ✓ Propane tanks
- ✓ Major appliances
- ✓ Tires
- ✓ Used oil/containers/filters
- ✓ Paint/pesticides/flammable liquids
- ✓ Electronics
- ✓ Small appliances
- ✓ Batteries
- ✓ Wood waste
- ✓ Mattresses/Boxsprings
- ✓ Asphalt Shingles
- ✓ Solid Waste
- ✓ Demo/Reno/Construction
- ✓ Concrete/asphalt

Special Considerations:

- ✓ Two B-Train trailers for MSW and Recycling
- ✓ Receives curbside waste and recycling from the District of Barriere
- ✓ Receives mega bags from Agate Bay for consolidation



The Region of BC's Best

Eco-Depots with Building

South Thompson Eco-Depot

Hours of Operation:

Tuesday-Sunday
8:00am-4:00pm

Materials Accepted:

- ✓ Residential recycling
- ✓ Commercial cardboard/containers
- ✓ Yard waste/grass
- ✓ Scrap metal
- ✓ Propane tanks
- ✓ Major appliances
- ✓ Tires
- ✓ Used oil/containers/filters
- ✓ Paint/pesticides/flammable liquids
- ✓ Electronics
- ✓ Small appliances
- ✓ Batteries
- ✓ Wood waste
- ✓ Mattresses/Boxsprings
- ✓ Asphalt Shingles
- ✓ Solid Waste
- ✓ Demo/Reno/Construction
- ✓ Concrete/asphalt

Special Considerations:

- ✓ Two B-Train trailers for MSW and Recycling
- ✓ Receives curbside waste and recycling from the Village of Chase
- ✓ B-Train single box used for smaller load hauling to Recycle BC approved WS Salmon Arm (in Armstrong)



- ✓ Receives mega bags from Black Pines, Chase Bottle Depot, Knutsford, Lac Le Jeune, Paul Lake, Tranquille Valley and Westwold for consolidation



The Region of BC's Best

Eco-Depot (base)

Blue River Eco-Depot – **HAULING ONLY**

Hours of Operation:

Mon, Wed, Fri	Sunday
10:00am-2:00pm	12:00pm-4:00pm

Materials Accepted:

- | | |
|--------------------------------------|--------------------------|
| ✓ Residential recycling | ✓ Electronics |
| ✓ Commercial cardboard/containers | ✓ Small appliances |
| ✓ Yard waste/grass | ✓ Batteries |
| ✓ Scrap metal | ✓ Clothing donation |
| ✓ Major appliances | ✓ Wood waste |
| ✓ Tires | ✓ Solid Waste |
| ✓ Used oil/containers/filters | ✓ Demo/Reno/Construction |
| ✓ Paint/pesticides/flammable liquids | ✓ Concrete/asphalt |

Special Considerations:

- ✓ Intra-Plains Transport Contractor for Operations & Maintenance starting July 1, 2023
- ✓ Will need to coordinate hauling with Contractor for Bins and Mega Bags



The Region of BC's Best

Transfer Station Plus

Knutsford Transfer Station

Hours of Operation:

Wednesday & Saturday
9:00am-5:00pm

Materials Accepted:

- | | |
|-------------------------|--------------------------|
| ✓ Residential recycling | ✓ Major appliances |
| ✓ Tires | ✓ Batteries |
| ✓ Scrap metal | ✓ Solid Waste |
| ✓ Propane tanks | ✓ Demo/Reno/Construction |

Special Considerations:

- ✓ Mega bags hauled to South Thompson for consolidation



The Region of BC's Best

Transfer Station Plus

Paul Lake Transfer Station

Winter

(Nov 1-March 31)

Tuesday

6:00am-2:00pm

Thurs, Sat, Sun

9:00am-5:00pm

Summer

(April 1-Oct 31)

Tuesday

6:00am-4:00pm

Thurs, Sat, Sun

8:00am-6:00pm

Materials Accepted:

- ✓ Residential recycling
- ✓ Commercial cardboard/containers
- ✓ Scrap metal
- ✓ Propane tanks
- ✓ Major appliances
- ✓ Batteries
- ✓ Tires
- ✓ Clothing donation
- ✓ Mattresses/boxsprings
- ✓ Solid Waste
- ✓ Demo/Reno/Construction

Special Considerations:

- ✓ Mega bags hauled to South Thompson for consolidation



The Region of BC's Best

Transfer Station Plus

Vavenby Transfer Station

Hours of Operation:
Wednesday & Sunday
9:00am-5:00pm

Materials Accepted:

- ✓ Residential recycling
- ✓ Household batteries
- ✓ Solid Waste

Special Considerations:

- ✓ Mega bags hauled to Clearwater for consolidation



The Region of BC's Best

Transfer Station Plus

Westwold Transfer Station

Hours of Operation:

Sunday & Monday
9:00am-5:00pm

Materials Accepted:

- ✓ Residential recycling
- ✓ Yard waste/grass
- ✓ Scrap metal
- ✓ Propane tanks
- ✓ Major appliances
- ✓ Batteries
- ✓ Used oil/filters/containers
- ✓ Tires
- ✓ Mattresses/boxsprings
- ✓ Clothing donation
- ✓ Solid Waste
- ✓ Demolition/Renovation /Construction

Special Considerations:

- ✓ Mega bags hauled to South Thompson for consolidation



The Region of BC's Best

Transfer Station Plus

Sun Peaks Transfer Station

Winter

(Nov 1-March 31)

Monday-Sunday
10:00am-6:00pm

Summer

(April 1-Oct 31)

Mon, Wed, Thurs, Sat, Sun
10:00am-6:00pm

Open Christmas Day, Boxing Day & New Years Day

Materials Accepted:

- ✓ Residential recycling
- ✓ Household batteries
- ✓ Solid Waste

Special Considerations:

- ✓ Customers do not pay fees at time of drop off. Municipality pays directly for waste to landfill.
- ✓ No mobile device at this time.
- ✓ Electric fence perimeter for bears and sasquatch



The Region of BC's Best

Transfer Station (base)

Agate Bay Transfer Station

Hours of Operation:

Sunday

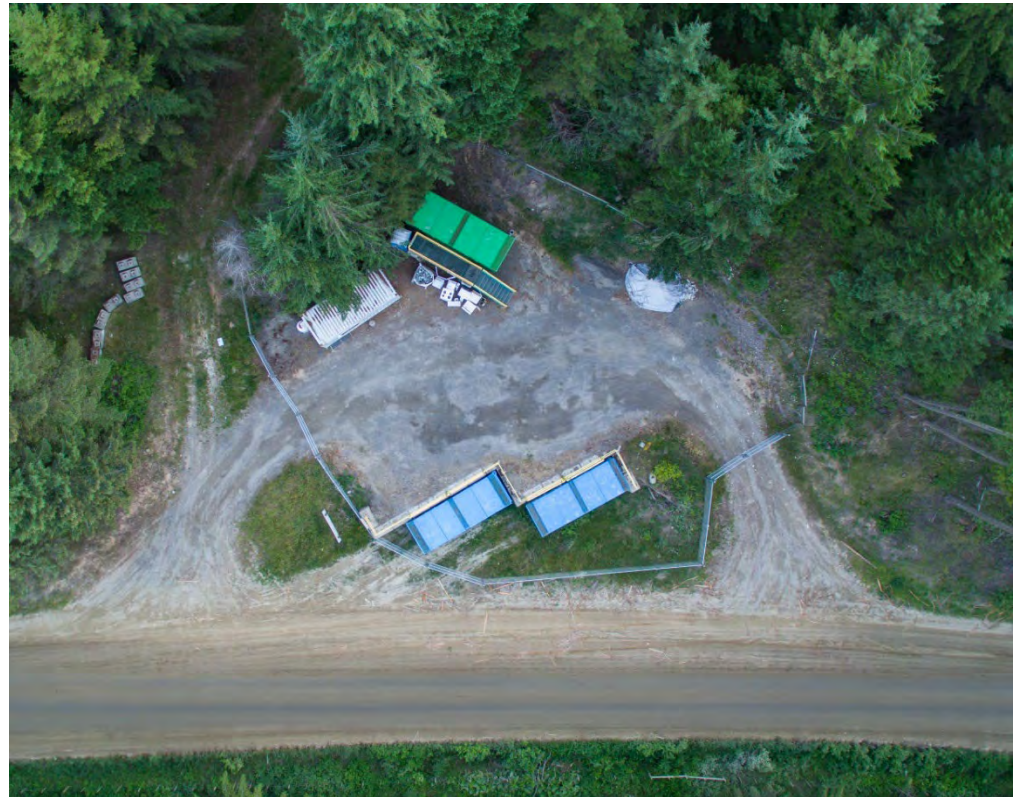
1:00pm-5:00pm

Materials Accepted:

- ✓ Residential recycling
- ✓ Household batteries
- ✓ Solid Waste

Special Considerations:

- ✓ Mega bags hauled to Louis Creek for consolidation



The Region of BC's Best

Transfer Station (base)

Black Pines Transfer Station

Hours of Operation:

Wednesday	Sunday
7:00am-11:00pm	9:00am-1:00pm

Materials Accepted:

- ✓ Residential recycling
- ✓ Household batteries
- ✓ Solid Waste

Special Considerations:

- ✓ Mega bags hauled to South Thompson for consolidation
- ✓ New ring road almost complete which will improve traffic flow



Transfer Station (base)

Eagan Lake Transfer Station

Hours of Operation:

Sunday

12:00pm-4:00pm

Materials Accepted:

- ✓ Residential recycling
- ✓ Household batteries
- ✓ Solid Waste

Special Considerations:

- ✓ Mega bags hauled to Clearwater for consolidation



The Region of BC's Best

Transfer Station (base)

Lac Le Jeune Transfer Station

Hours of Operation:

Wednesday	Sunday
8:00am-12:00pm	9:00am-1:00pm

Materials Accepted:

- ✓ Residential recycling
- ✓ Household batteries
- ✓ Solid Waste

Special Considerations:

- ✓ Mega bags hauled to South Thompson for consolidation
- ✓ New ring road added for improved traffic flow



Transfer Station (base)

Little Fort Transfer Station

Hours of Operation:

Wednesday & Sunday
12:00pm-4:00pm

Materials Accepted:

- ✓ Residential recycling
- ✓ Commercial cardboard/containers
- ✓ Household batteries
- ✓ Solid Waste

Special Considerations:

- ✓ Mega bags hauled to Clearwater for consolidation



Transfer Station (base)

Tranquille Valley Transfer Station

Hours of Operation:

Wednesday	Sunday
8:00am-12:00pm	9:00am-1:00pm

Materials Accepted:

- ✓ Residential recycling
- ✓ Household batteries
- ✓ Solid Waste

Special Considerations:

- ✓ Mega bags hauled to South Thompson for consolidation



Questions?

Thank you!