



April 5, 2023

Area “B” Community Meeting Blue River



The Region of BC's Best

Agenda

1. Introduction
2. Trans Mountain Community Benefits Update
3. Grand Opening of the Blue River Pedestrian Bridge
4. Blue River Trails Working Group Update and Explore Blue River Working Group Establishment
5. TNRD Area “B” Community Services Budget Update
6. Overall TNRD Area “B” 2023 Budget and Property Class breakdown
7. Blue River Community Water System Update
8. “What Was Heard” from the Fall 2023 Area “B” survey
9. Question & Answer with TNRD staff and Electoral Area Director

Introduction



Introductions

- Lee Onslow Director, Electoral Area “B”
(Thompson Headwaters)
- Jamie Vieira General Manager of Operations
- Kevin Skrepnek Manager of Community & Emergency Services
- Sherri Madden TNRD Community Services Coordinator
- Colton Davies TNRD Communications & Marketing Manger



Introduction – What is the TNRD

About the TNRD

The Region of BC's Best

Encompassing 44,449 square kilometres in the southern interior of BC, the Thompson-Nicola region is characterized by river valleys, desert terrain, rolling grasslands and towering mountains.

The region offers a range of rural and urban lifestyles, from the ranching communities in Lower Nicola to the convergence of the Fraser and Thompson Rivers in Lytton, from the wilderness of the North Thompson Valley to the hub of the City of Kamloops. It is home to more than 60 provincial parks, 12 regional libraries and Thompson Rivers University.



11

Municipalities

10

Electoral Areas

124

Services



The Region of BC's Best

Introduction - What is the TNRD

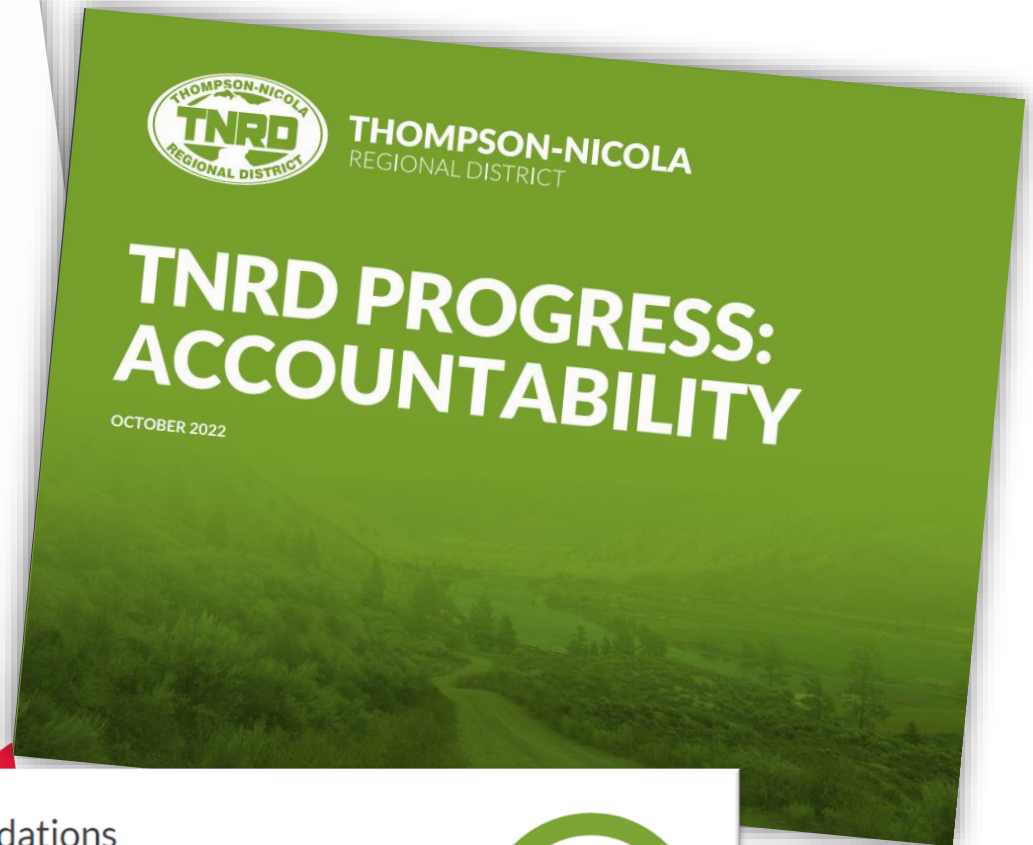
- Local Government – 27 elected Directors (representing EAs & municipalities)
- All policy and strategic direction set by the Board
- Staff responsible for delivering the services and following policies set by the Board

All services are independent

Money collected for a service cannot be used elsewhere



Introduction - What is the TNRD



Progress on Recommendations

[Click Here to View Progress](#)

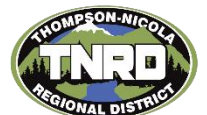


Introduction – Committee Changes

- TNRD Board Committee Review – June 2022
- Thompson Headwaters Services Committee dissolved
- Replaced with “broader public consultation process”

New EA “B” Engagement Process:

- Two (2) community meetings per year
- Working groups (i.e. Blue River Trails & Explore Blue River Tourism) being established/updated to provide input to staff
- Website to share information and receive feedback
- Public surveys
- Direct communication always welcome (phone, email, coffee)



Questions?

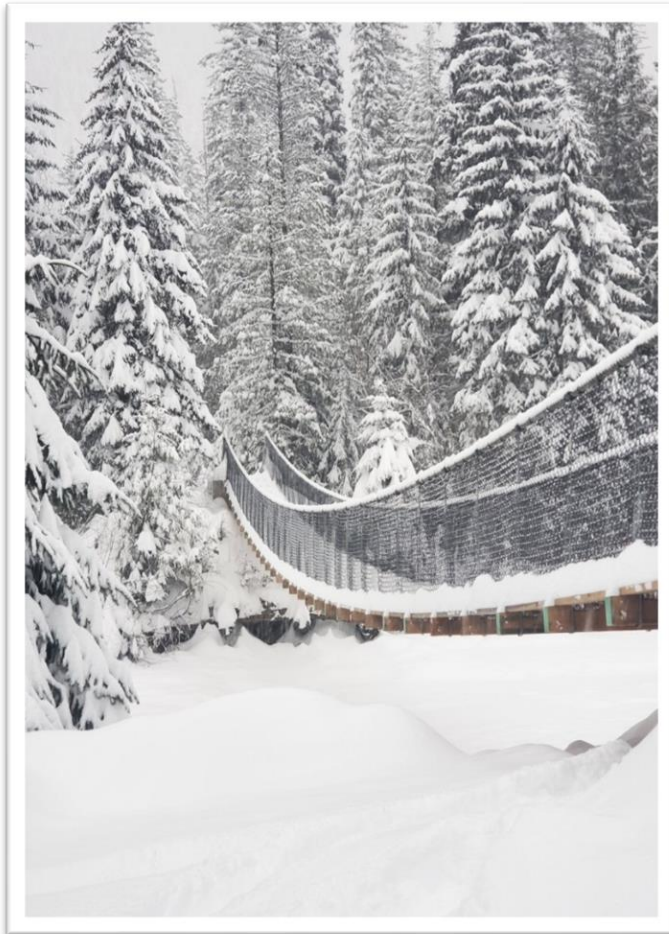


Trans Mountain Community Benefits

- \$80,000 to the Blue River pedestrian bridge project
COMPLETED
- \$65,000 to the Diamond Drive picnic shelter and outhouse
COMPLETED
- \$12,000 to the Avola history kiosk at the Avola School House (slated for 2023)
- \$30,000 for the Blue River Cemetery parking lot and trailhead access (\$11,356 remaining)
- \$113,000 for Blue River Community water system improvements (\$69,500 remaining)



Grand Opening of the Blue River Pedestrian Bridge



- Planned for spring 2023
- All residents will be invited.

Working Groups

- **Blue River Trails Working Group**
 - The purpose is to provide Simpcw, stakeholder and local resident input to projects impacting trails in the Blue River area.

- **Explore Blue River Tourism Working Group**
 - Explore Blue River has been established as the call to action for promotion of tourism in Electoral Area “B”. The purpose of the EBRTWG is to provide Simpcw, stakeholder and local resident input to tourism marketing activities in Electoral Area “B”.



TNRD Area “B” Community Services & Budget Update

Parks, community halls, cemeteries, street lighting, radio rebroadcasting, and tourism marketing



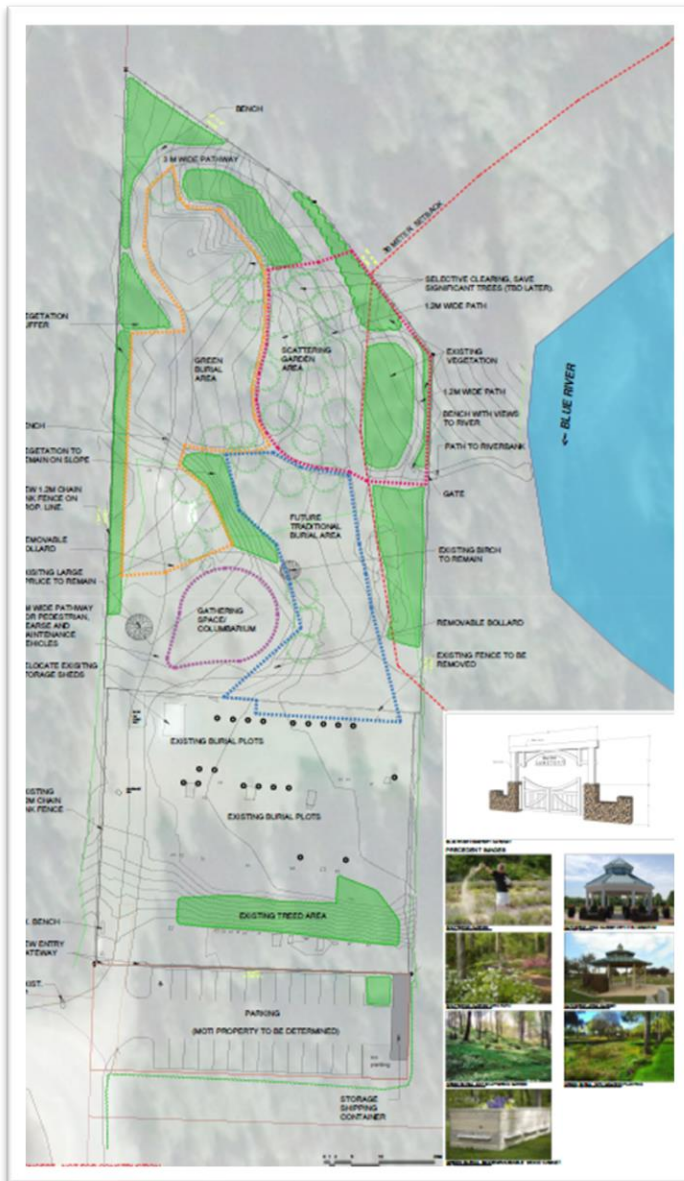
Cemeteries



Cemeteries

Capital	Operational	TOTAL Budget
\$ 0.00	+ \$86,281.00 (including \$63,682.00 to capital reserve)	= \$86,281.00

- Maintained by local contractors.
- Contact TNRD staff for plot purchases and burials.
- Bylaw will be updated in 2023.



Blue River Future Capital Expansion:

- Scattering garden
- Columbarium
- Traditional burial
- Green burial
- Pathways
- Gathering area
- River viewing area

Community Halls

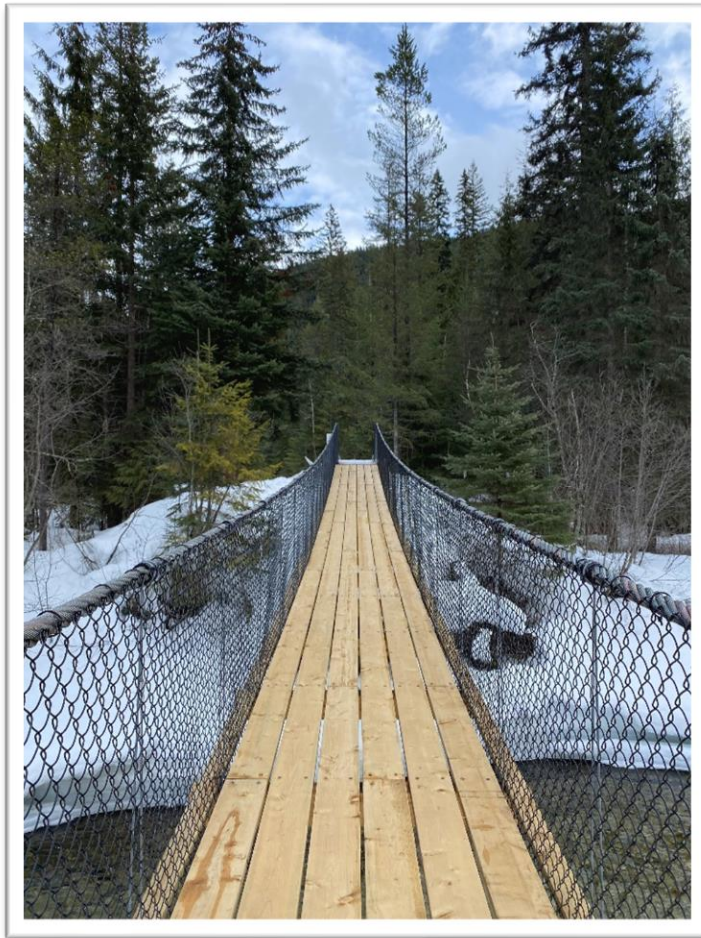


Community Halls

Capital	Operational	TOTAL Budget
\$30,888.00	+ \$41,918.00 (no transfer to capital reserve)	= \$72,806

- Establish Avola historical signage
(funded with Trans Mountain Community Benefit monies)
- Remediation work to attic at Avola School House
- \$25,000 Grant in Aid provided to the Blue River Community Association for the Blue River Community Hall

Community Parks and Trails



Community Parks (and Trails)

Capital	Operational	TOTAL Budget
\$248,678.00	+ \$91,923.00 (no transfer to capital reserve)	= \$340,601.00

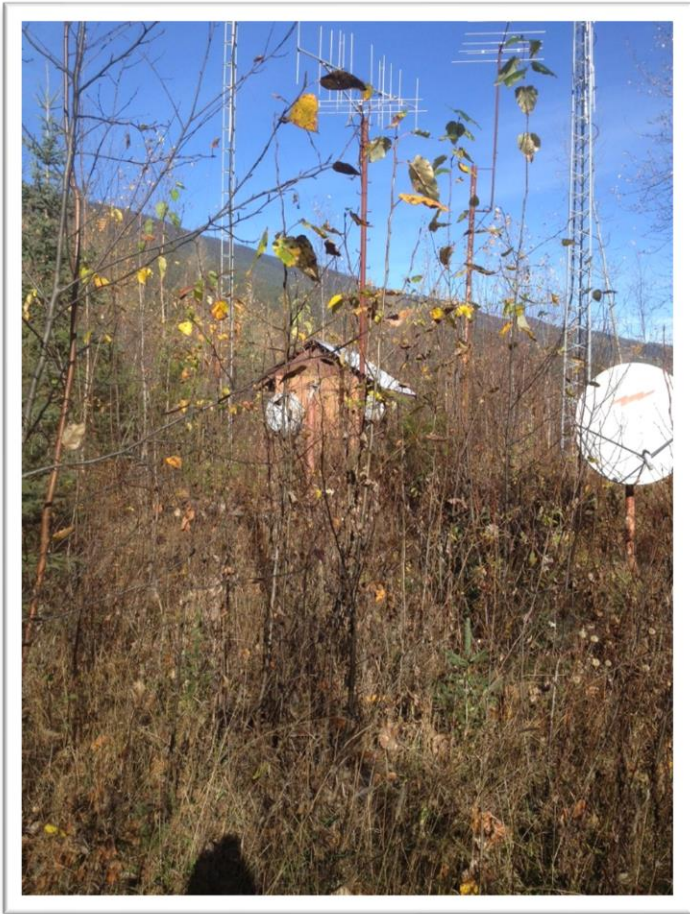
2023 capital projects:

- Jetty repair
- Trails wayfinding signage & trailhead kiosks
- Work on Murtle Rd site as Trans Mountain Camp exits the site

Future capital project priorities:

- Blue River Trails Master Plan Action Item implementation
- Avola Community Park Planning
- Blue River Community Park Planning
- Park planning for improvements at the Murtle Rd Park when Trans Mountain leaves, i.e. Parking area, trails, disc golf
- Winter operation of the north portion of the Blue River Community park
- Brushing of luge hill and clearing for tobogganing

Radio Rebroadcast



Radio Rebroadcast

Capital	Operational	TOTAL Budget
\$ 0.00	+ \$11,689.00 (no transfer to capital reserve)	= \$11,689.00

- Need to repair/replace the shed at the Avola site
- Would like to move the Blue River equipment from the Trans Mountain Pumping Station to the Blue River Library, to take advantage of the TELUS fibre connection

Tourism Marketing



**PACK IT IN
PACK IT OUT**
Respect this fragile ecosystem



**WEATHER CONDITIONS
CHANGE IN AN INSTANT**
Prepare for cold and/or wet conditions
when heading into the backcountry
www.adventurismount.ca | www.weather.gc.ca



BE BEAR AWARE

- Never approach a bear
- Never eat away. Stay calm & back away slowly
- Ensure bears never have access to food or garbage



Legend

- Easiest Trail
- ... Easy Trail
- More Difficult Trail
- Very Difficult Trail
- Forestry Road
- University Accessible Trail
- Hiking Trail
- Cycling trail
- Parking

Points of Interest

- Den Fayngth Beach House/Blue River Community Park
- Blue River Community Hall
- Mud Lake West Recreation Site
- Parkby Falls




Summer Trail Maintenance by TNRD
Report Issues to 1-877-377-9673

NEED TO KNOW

- Please stay on the trails in order not to damage surrounding vegetation
- No cell service in some areas
- Be prepared for wildlife encounters
- Prepare for mosquitoes, pack repellent, light weight, long-sleeved clothing
- Dogs are welcome, please pick up after them
- Hiking and mountain biking is best between June and October when trails are driest
- Level 1 e-bikes are permitted on the biking trails
- Trails are two-way multi-use - be respectful and yield the right of way



Tourism Marketing

Capital	Operational	TOTAL Budget
\$60,000.00	+ \$56,006.00 (\$5,000.00 to capital reserve)	= \$116,006.00

- Welcome to Avola & Blue River sign installation
- Tourism Marketing including
 - Social Media/Web Marketing
 - photography
 - update and print trails maps
 - social media
 - North Thompson Valley initiatives (%50 DBC funded with partners also contributing)
 - 12 months of campaigns
 - Trade shows

TNRD Budget Process & Taxation



TNRD Budget Process

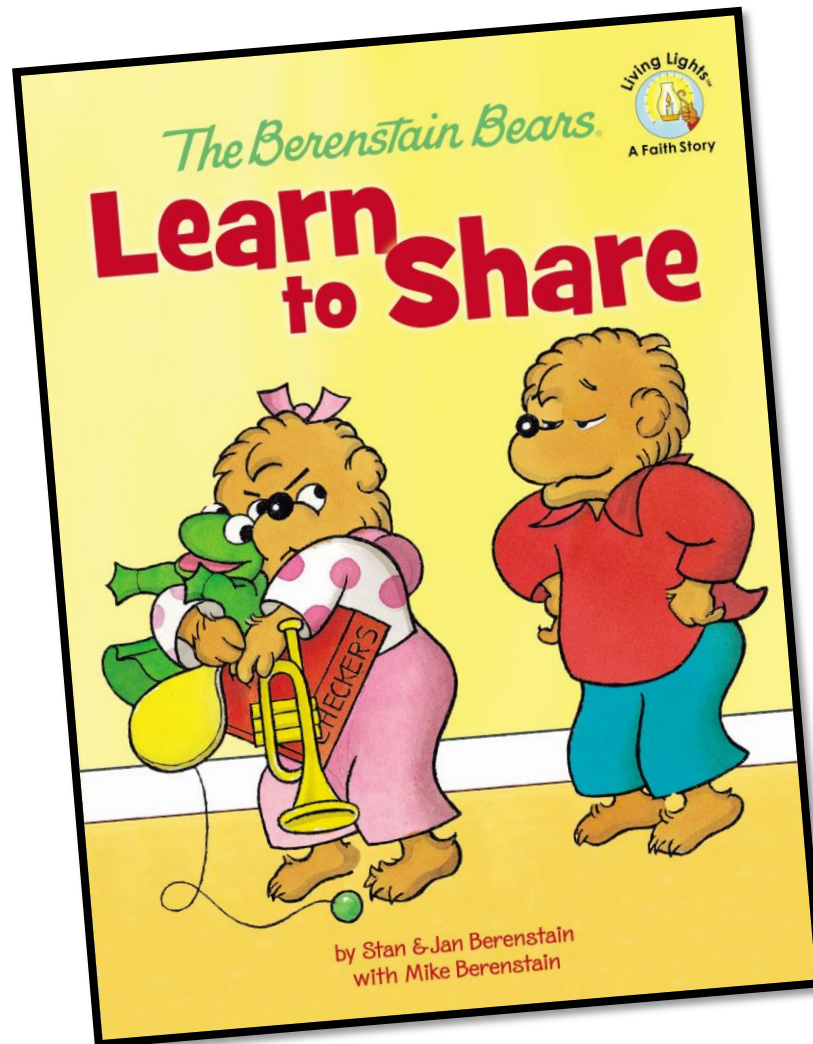
- Five year financial plan – adopted by March 31st each year
- 140+ individual budgets (different than municipalities)
- Community input in budget process – in particular with electoral area or specified area services
- Services are funded primarily through property taxes (collected by the province)
- Other revenue sources
 - Grants (higher levels of government)
 - User fees (i.e. utilities, disposal fees, building permit fees, etc)
 - Contribution agreements/donations

Electoral Area “B” Services



Electoral Area "B" & Blue River Specified Area	2023 Requisition	2022 Requisition
Thompson-Nicola Regional District Library System	\$ 105,580	\$ 99,947
General Government Services - Legislative/Admin	\$ 72,045	\$ 36,545
Environmental Planning and Zoning	\$ 65,911	\$ 48,369
Film Commission	\$ 4,602	\$ 3,410
Fraser Basin	\$ 429	\$ 386
Search and Rescue - All Members	\$ 2,636	\$ 1,750
Regional Parks	\$ 978	\$ 694
E-911	\$ 28,287	\$ 20,544
Solid Waste Management	\$ 297,597	\$ 262,159
Noxious Weed Control	\$ 22,661	\$ 20,996
Building Standard	\$ 10,241	\$ 10,557
General Government Services - E/A Admin	\$ 87,467	\$ 62,822
Crime Stoppers Program	\$ 969	\$ 646
Protective Services	\$ 16,064	\$ 13,456
Television	\$ 10,108	\$ 10,477
Community Parks	\$ 66,697	\$ 118,251
Community Halls	\$ 42,961	\$ 45,353
Clearwater & District Highway Rescue Service	\$ -	\$ 9,750
Recreation & Culture Grant-In-Aid (Section 804(2)(g))	\$ 9,684	\$ 10,905
Cemeteries	\$ 20,599	\$ 20,518
Valley Connector Transit Service	\$ 2,541	\$ 2,335
Economic Development & Tourism	\$ 62,177	\$ 69,294
Search and Rescue Grants-in-aid	\$ 2,060	\$ 2,060
Alternative Waste Collection	\$ 79,793	\$ 48,328
Blue River Waterworks	\$ 32,760	\$ 32,760
Street Lighting	\$ 11,410	\$ 10,490
Total	\$ 1,056,257	\$ 962,802

TNRD Budget Process



Participant	2023 Converted Assesment	% Share
Kamloops	\$ 3,268,465,971	63.50%
Barriere	\$ 45,296,554	0.88%
Clearwater	\$ 73,934,598	1.44%
Merritt	\$ 217,947,698	4.23%
Logan Lake	\$ 93,901,602	1.82%
Ashcroft	\$ 41,895,217	0.81%
Cache Creek	\$ 22,175,343	0.43%
Chase	\$ 76,042,107	1.48%
Clinton	\$ 12,316,896	0.24%
Lytton	\$ 3,593,888	0.07%
Sun Peaks	\$ 169,382,775	3.29%
Area "A"	\$ 56,703,061	1.10%
Area "B"	\$ 88,386,784	1.72%
Area "E"	\$ 108,297,640	2.10%
Area "I"	\$ 64,175,930	1.25%
Area "J"	\$ 183,694,883	3.57%
Area "L"	\$ 116,771,921	2.27%
Area "M"	\$ 132,924,818	2.58%
Area "N"	\$ 95,653,989	1.86%
Area "O"	\$ 98,415,820	1.91%
Area "P"	\$ 177,062,577	3.44%
Total	\$ 5,147,040,072	100.00%

How are taxes calculated?

**ASSESSED
VALUE**

Received in January
BC Assessment
(BCA)

X

**PROPERTY
TAX RATE**

Spring
Set by
Taxing Authority

=

**PROPERTY
TAXES**

Due 1st Business
Day July*
Taxpayer

How are taxes calculated?

Class
Residential
Utility
Supportive housing
Major Industry
Light Industry
Business
Managed forest
Rec
Farm
Total

How are taxes calculated?

Class	2023 Share
Residential	8.48%
Utility	84.94%
Supportive housing	0.00%
Major Industry	0.00%
Light Industry	0.45%
Business	5.97%
Managed forest	0.00%
Rec	0.15%
Farm	0.01%
Total	100.00%

How are taxes calculated?

Class	2023 Share	2022 Share
Residential	8.48%	9.28%
Utility	84.94%	82.90%
Supportive housing	0.00%	0.00%
Major Industry	0.00%	0.00%
Light Industry	0.45%	0.58%
Business	5.97%	7.04%
Managed forest	0.00%	0.00%
Rec	0.15%	0.18%
Farm	0.01%	0.02%
Total	100.00%	100.00%

Area “B” – Assessment Change

Class	2023 Share	2022 Share
Residential	8.48%	9.28%
Utility	84.94%	82.90%
Supportive housing	0.00%	0.00%
Major Industry	0.00%	0.00%
Light Industry	0.45%	0.58%
Business	5.97%	7.04%
Managed forest	0.00%	0.00%
Rec	0.15%	0.18%
Farm	0.01%	0.02%
Total	100.00%	100.00%

How are taxes calculated?



Electoral Area "B" & Blue River Specified Area	2023 Requisition
Thompson-Nicola Regional District Library System	\$ 105,580
General Government Services - Legislative/Admin	\$ 72,045
Environmental Planning and Zoning	\$ 65,911
Film Commission	\$ 4,602
Fraser Basin	\$ 429
Search and Rescue - All Members	\$ 2,636
Regional Parks	\$ 978
E-911	\$ 28,287
Solid Waste Management	\$ 297,597
Noxious Weed Control	\$ 22,661
Building Standard	\$ 10,241
General Government Services - E/A Admin	\$ 87,467
Crime Stoppers Program	\$ 969
Protective Services	\$ 16,064
Television	\$ 10,108
Community Parks	\$ 66,697
Community Halls	\$ 42,961
Clearwater & District Highway Rescue Service	\$ -
Recreation & Culture Grant-In-Aid (Section 804(2)(g))	\$ 9,684
Cemeteries	\$ 20,599
Valley Connector Transit Service	\$ 2,541
Economic Development & Tourism	\$ 62,177
Search and Rescue Grants-in-aid	\$ 2,060
Alternative Waste Collection	\$ 79,793
Blue River Waterworks	\$ 32,760
Street Lighting	\$ 11,410
Total	\$ 1,056,257



Area “B” – 2023 Tax Breakdown

Class	Actual Value	Conv %	Converted Value	% Share	\$ Share	Tax Rate (\$/1000)
Residential	75,016,636	0.100	7,501,664	8.48	85,856	1.1445
Utility	214,603,197	0.350	75,111,119	84.94	859,643	4.0057
Supportive housing	0	0.100	0	0.00	0	0.0000
Major Industry	0	0.340	0	0.00	0	0.0000
Light Industry	1,170,400	0.340	397,936	0.45	4,554	3.8913
Business	21,551,255	0.245	5,280,057	5.97	60,430	2.8040
Managed forest	0	0.300	0	0.00	0	0.0000
Rec	1,290,500	0.100	129,050	0.15	1,477	1.1445
Farm	110,483	0.100	11,048	0.01	126	1.1445
Totals	313,742,471		88,430,874	100.00	1,012,087	

Area “B” – 2023 Tax Breakdown

Class	Share	Tax Collected
Residential	8.5%	\$ 85,856.13
Utility	84.9%	\$ 859,642.65
Supportive housing	0.0%	\$ -
Major Industry	0.0%	\$ -
Light Industry	0.4%	\$ 4,554.36
Business	6.0%	\$ 60,429.96
Managed forest	0.0%	\$ -
Rec	0.1%	\$ 1,476.97
Farm	0.0%	\$ 126.44
Total		\$ 1,012,086.51

Area “B” – 2023 Tax Breakdown

Tax rate per \$100,000 of Assessment	
Residential	\$114.45
Utility	\$400.57
Light Industry	\$389.13
Business	\$280.40
Rec	\$114.45
Farm	\$114.45

Property Tax Breakdown

Blue River Example: Residential Property with assessed value of 283,400

Taxing Authority	Tax rate	Annual Tax	% of tax bill
School Tax	\$ 1.50	\$ 424.50	21.4%
Provincial Rural Tax	\$ 0.36	\$ 102.02	5.1%
Police Tax	\$ 0.08	\$ 23.15	1.2%
TNRD	\$ 1.47	\$ 416.82	21.0%
Blue River Improvement District	\$ 2.54	\$ 720.81	36.3%
Hospital District	\$ 0.34	\$ 97.13	4.9%
BC Assessment	\$ 0.03	\$ 9.89	0.5%
Municipal finance authority	\$ -	\$ 0.06	0.0%
Blue River Water - TNRD	N/A (parcel tax)	\$ 189.45	9.5%
Total		\$ 1,983.83	100.0%

30% of property taxes collected in Blue River to TNRD

Questions?



Blue River Community Water System



Blue River Water System

- 205 connections
- Constructed: 1920 & 1960
- Acquired by the TNRD in 1992
- Funded by user fees and parcel tax

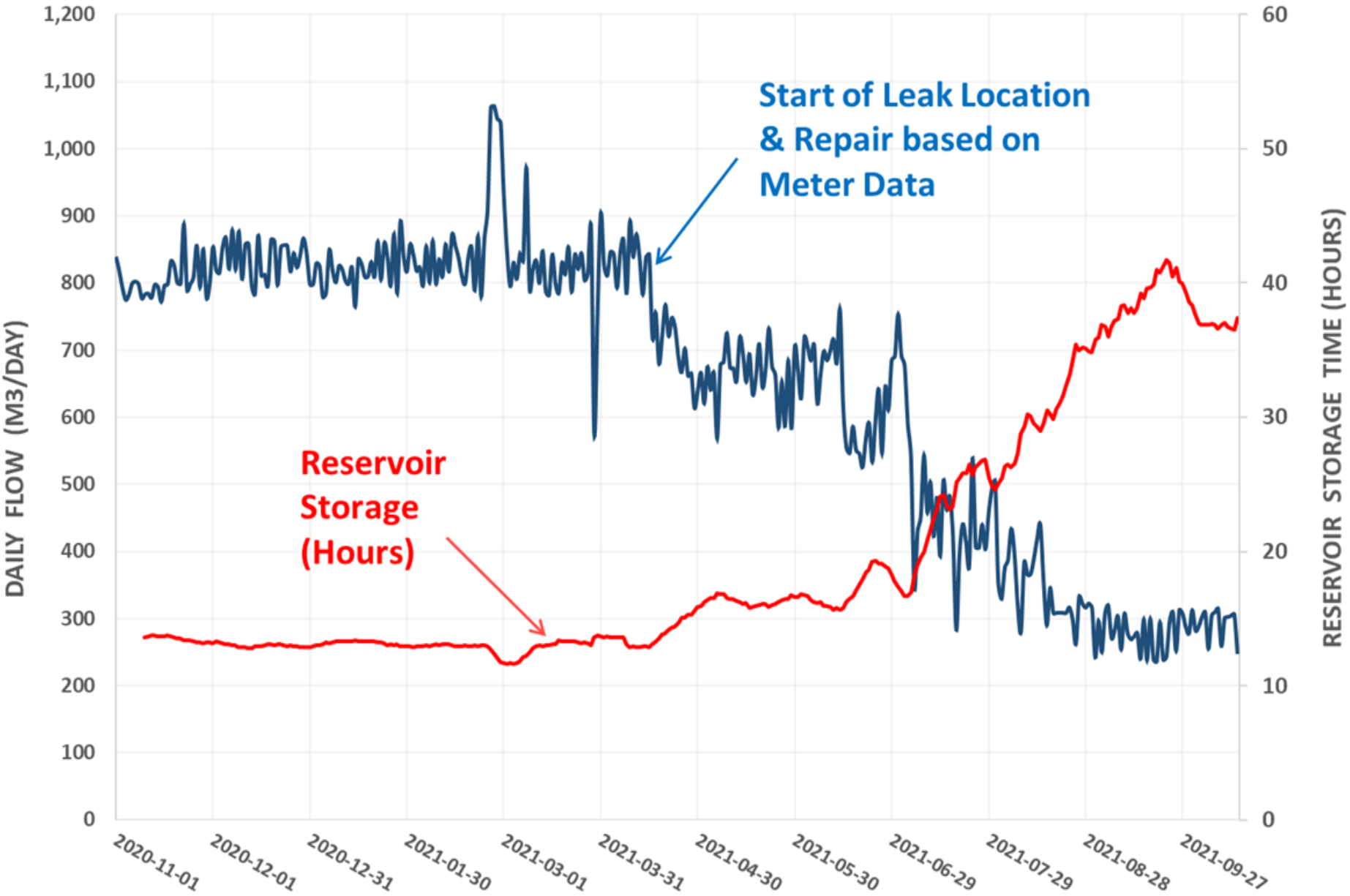


Blue River CWS Master Plan

Recommendations:

- Reduce leakage ✓

BLUE RIVER WATER SYSTEM

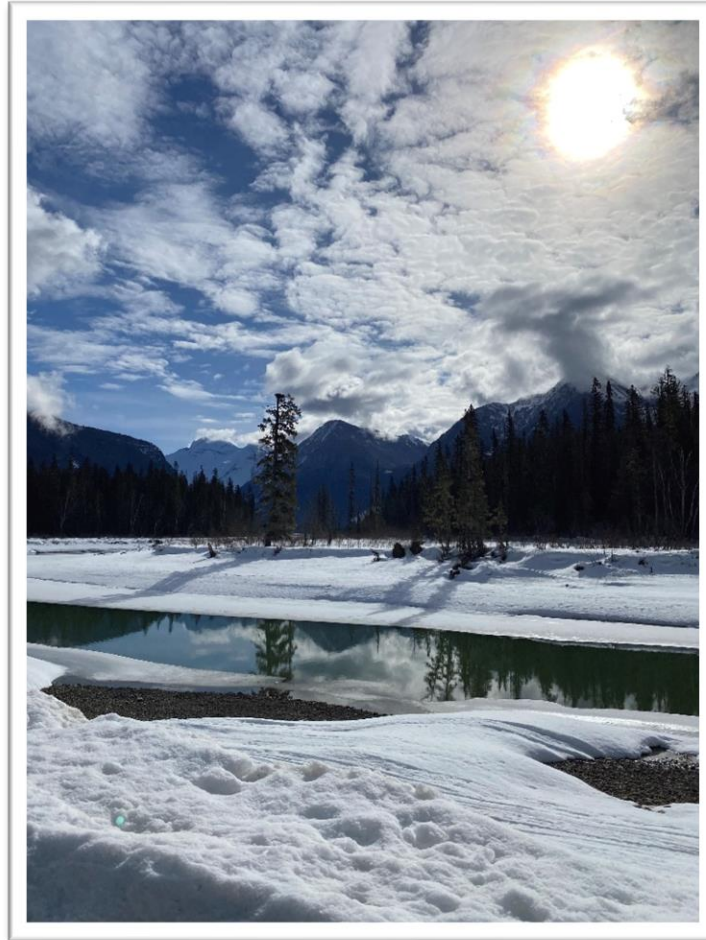


Blue River CWS Master Plan

Recommendations:

- Reduce leakage ✓
- Complete GARP Assessment ✓
- Install disinfection ✓
- Standby generator
- Looping
 - Johnston to Stewart St
 - Blue River West Frontage to Stewart

Questions?



“What Was Heard” from the Fall 2023 Area “B” survey



Survey Summary

- Breakdown of respondents - 41% Avola, 52% Blue River, 5% another location in Area “B”
- Overall respondents are satisfied with the TNRD services which were included in the survey (radio, community halls, street lighting, cemetery, tourism marketing, community parks & trails, solid waste,
- Concerns regarding emergency preparedness for Avola and Blue River.
- Suggestions for improvements to services, projects, ways to get better community engagement.
- Comments from survey were passed on to relevant TNRD staff and Area Director.

How to provide feedback

Email csadmin@tnrd.ca

Phone 1-800-377-8673

(Ask for Community Services Department)

Online <https://www.tnrd.ca/area-b-engagement>

- Community survey
- Coordinators report
- Copy of this presentation

In Person Talk to your EA Director, Lee Onslow

cell: 778-208-7339

email: director.lonslow@tnrd.ca

General Questions & Discussion

