



# Community Wildfire Resiliency Plan

---

**Thompson-Nicola Regional District Electoral Area "A" (Wells Gray Country)**

# Outline

---

- ① **Community Wildfire Resiliency Plan**
- ② **Community Description**
- ③ **Wildfire Risk Assessment**
- ④ **Seven FireSmart Disciplines**
- ⑤ **Action Plan & Recommendations**
- ⑥ **Questions**



Photo credit: Madison Hughes

# Community Wildfire Resiliency Plan

---

- High level plan
- Improve a community's wildfire preparedness
- Mitigate losses from possible wildfire
- Seven FireSmart principles
- Unlocks government funding sources



Photo credit: Madison Hughes

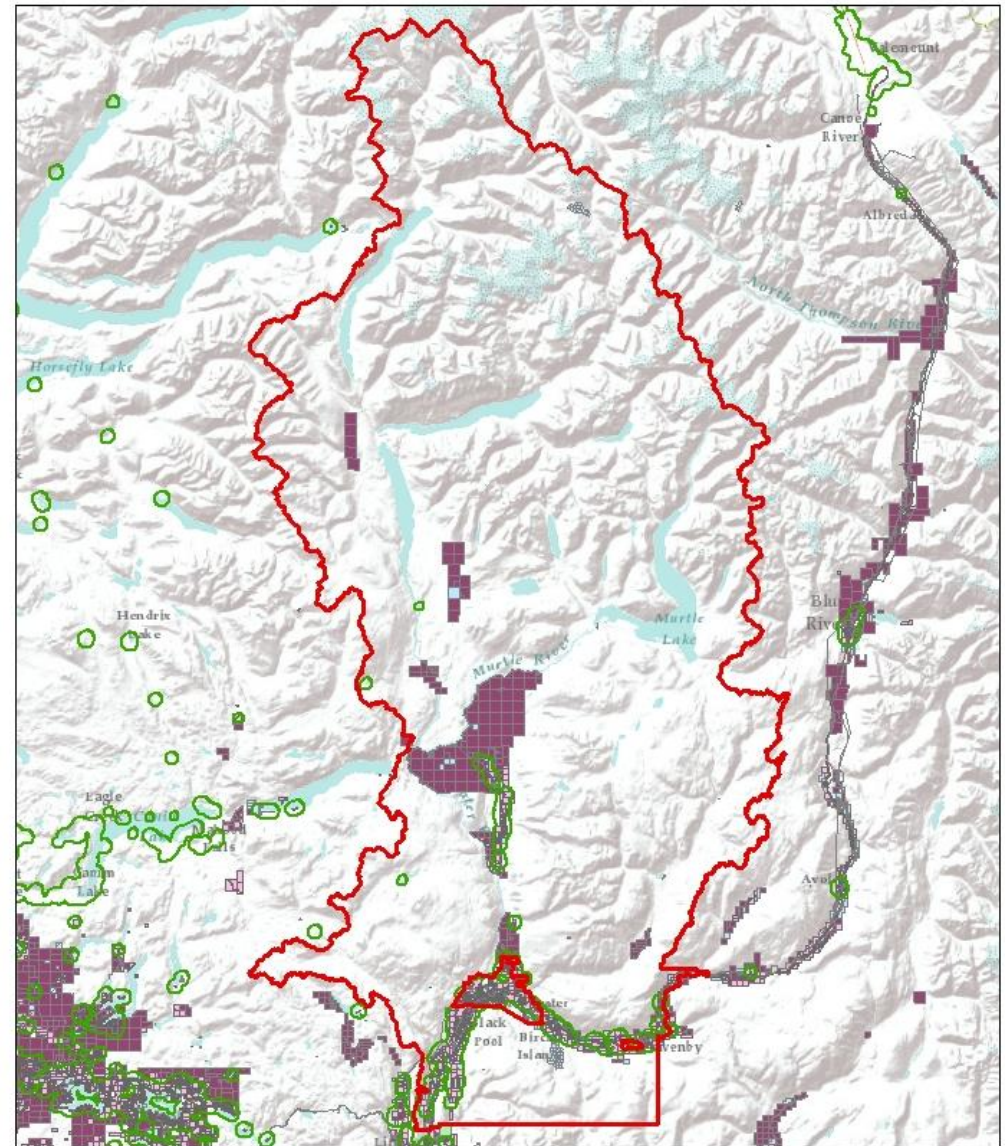
# Community Description

---



Photo credit: Hailey Sigalet

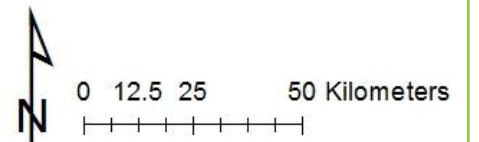
# Area of Interest



## Legend

- |                           |                     |
|---------------------------|---------------------|
| Wells Gray Country - A    | Federal             |
| 1km WUI                   | Mixed Ownership     |
| <b>PMBC Parcel Fabric</b> | Municipal           |
| <b>OWNER_TYPE</b>         | Private             |
| Crown Agency              | Unclassified        |
| Crown Provincial          | Untitled Provincial |

## Thompson-Nicola Regional District Electoral Area 'A' Wells Gray Country



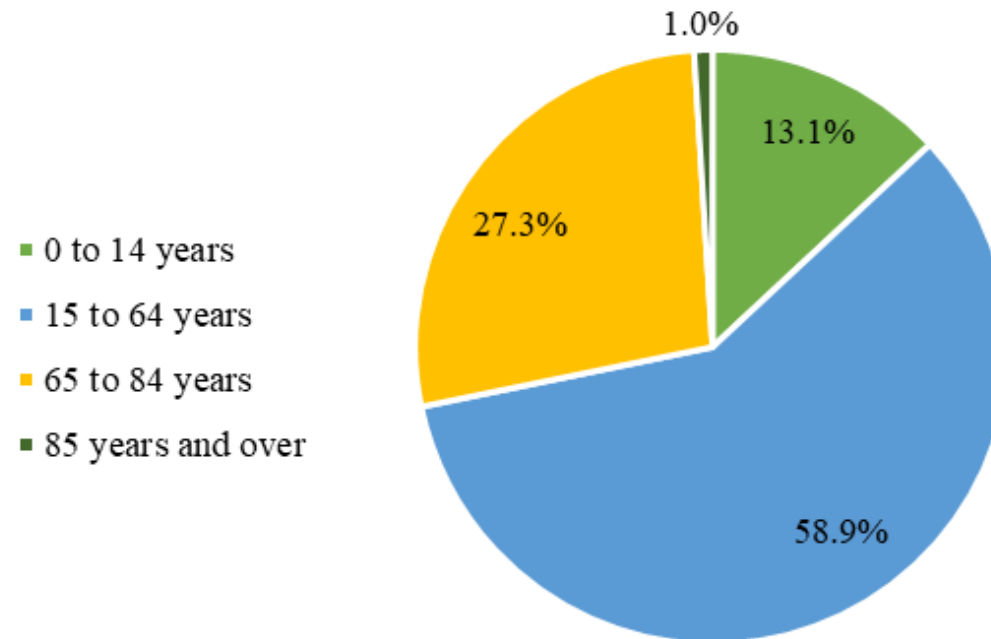
# Community Description - Demographics

---

Total Population: 1,573 (2021)

Population Growth: 5.4% since 2016

Wells Gray Country

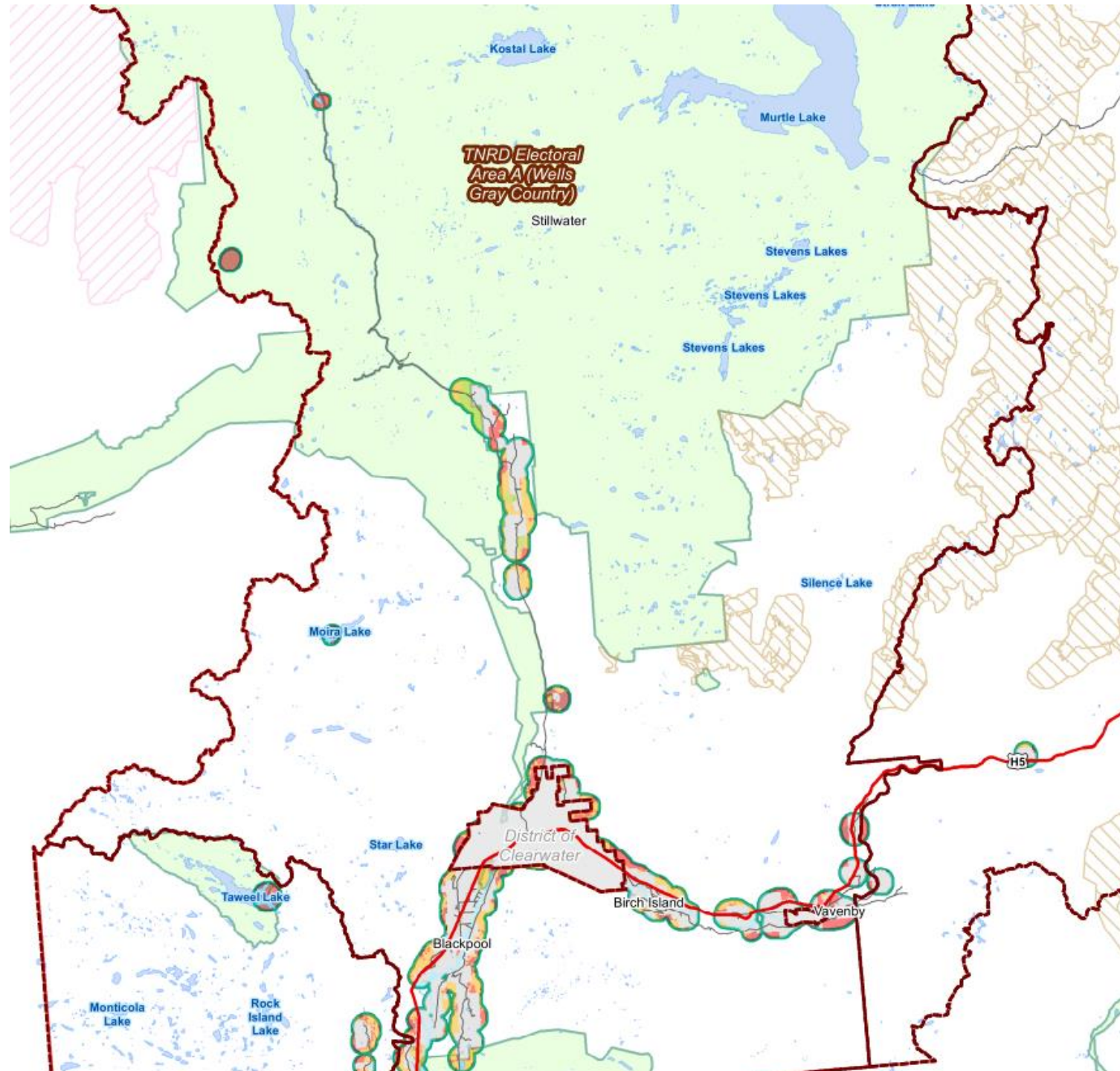


# Community Description - Land Ownership

Owner Type	Area (ha) Total	%	Area (ha) in WUI	%
Untitled Provincial	24208.72	64.2%	1424.64	13.4%
Private	10934.53	29.0%	8559.77	80.4%
Crown Provincial	2486.71	6.6%	583.14	5.5%
Unclassified	60.32	0.2%	58.3	0.5%
Municipal	12.44	0.03%	12.44	0.1%
Crown Agency	3.78	0.01%	3.09	0.03%
Federal	0.11	0.0003%	0.11	0.001%
Total	37706.61	100.0%	10641.49	100.0%

# Wildfire Risk Assessment

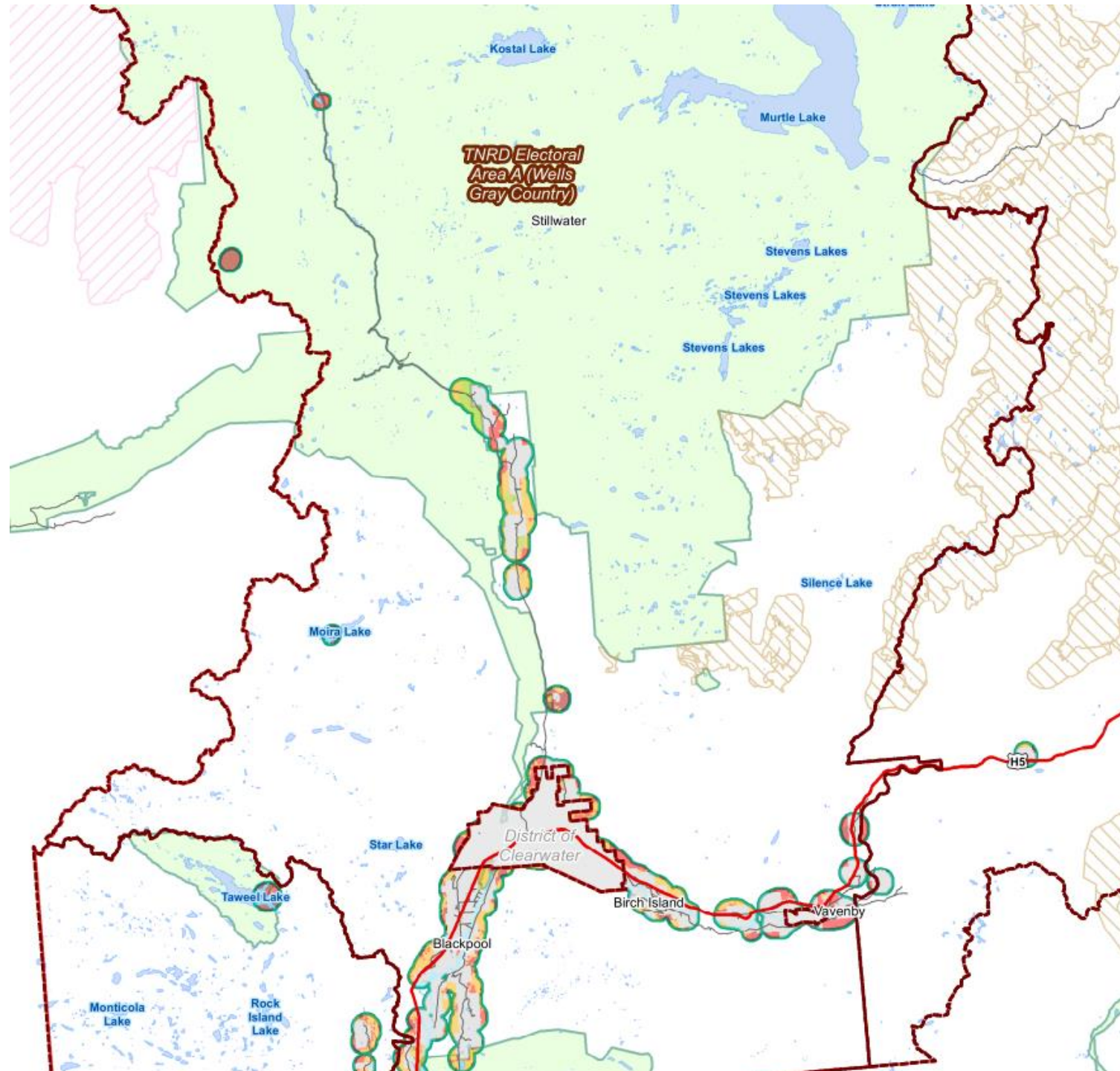
---





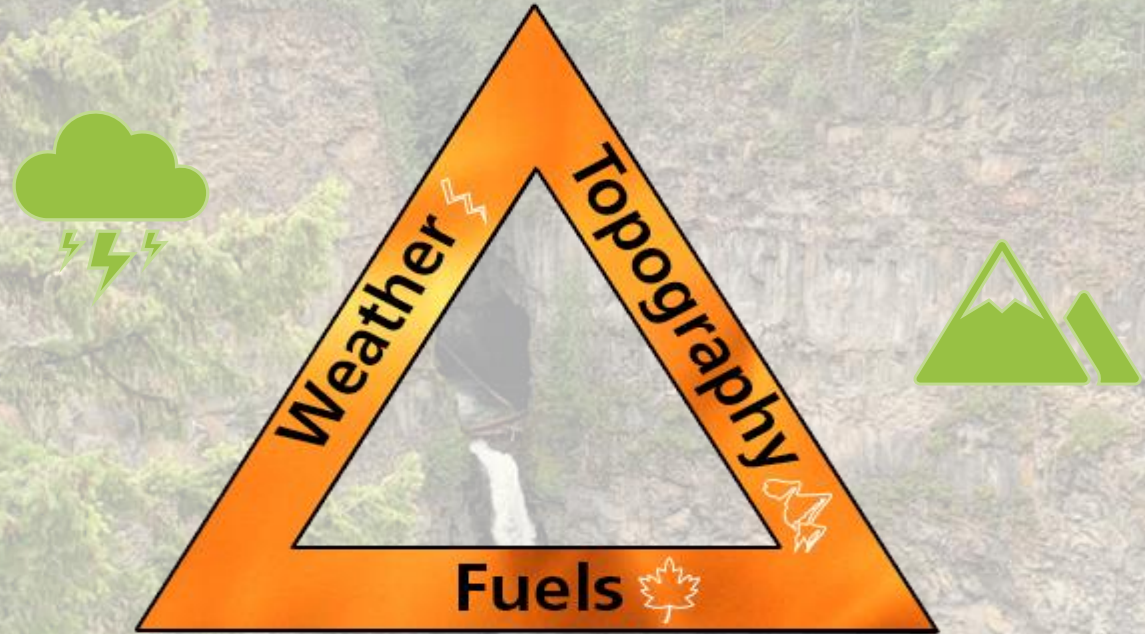
# Wildfire Risk Assessment – “1km Eligible WUI”

WUI: *Wildland  
Urban Interface*



# Wildfire Risk Assessment

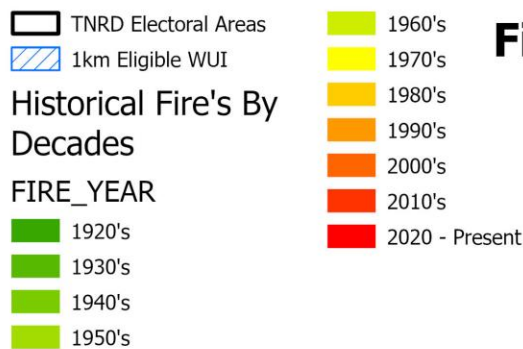
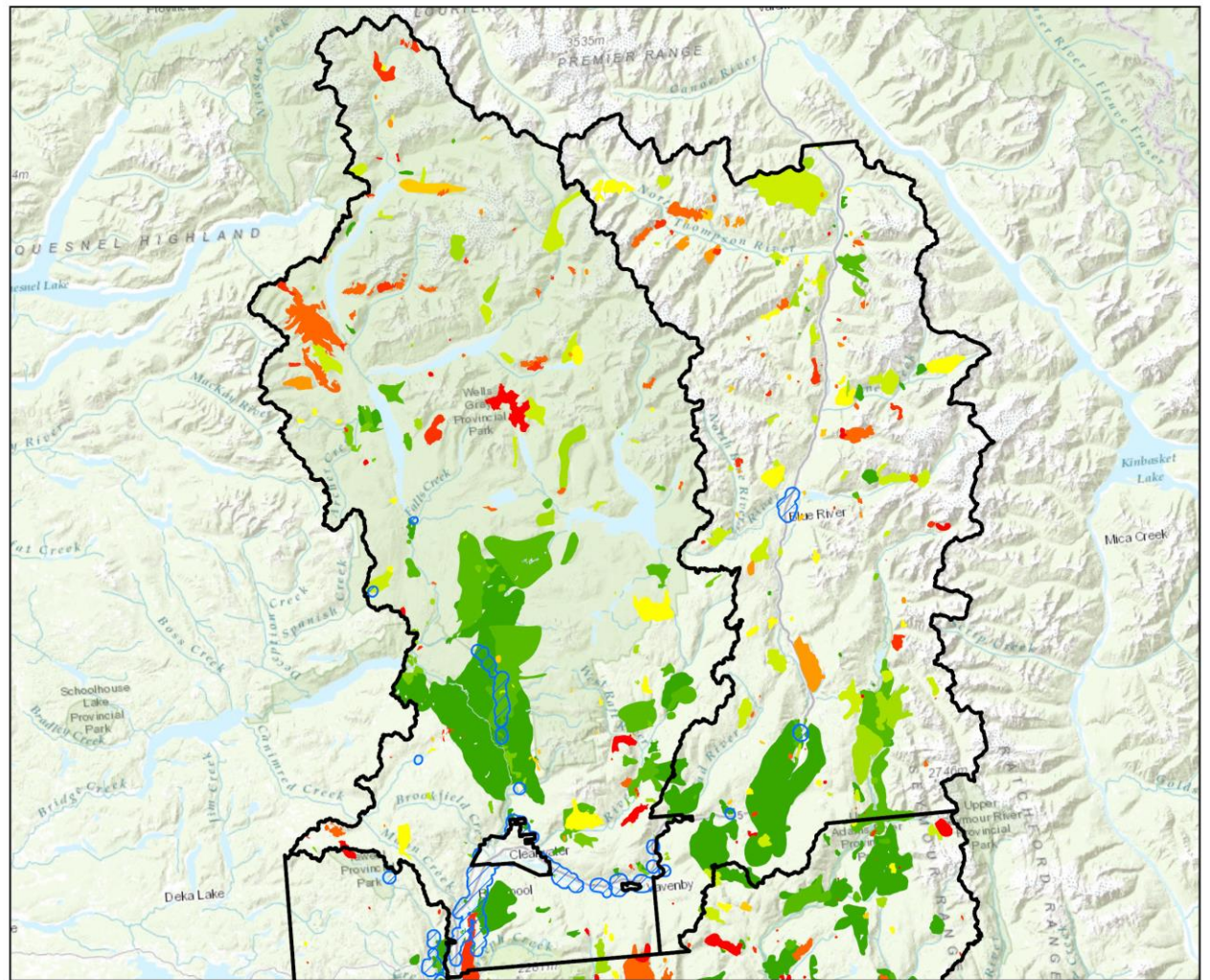
---



The fire triangle – interacting components that drive a wildfire.

Climate Variable	Season	Projected Change from 1961-1990 Baseline	
		Ensemble Median	Range (10th to 90th percentile)
Temperature (°C)	Annual	+3.2 °C	+2.2 °C to +4.2 °C
Precipitation (%)	Annual	2.60%	-0.53% to +8.8%
	Summer	1.10%	-25% to +7.8%
	Winter	1.80%	-1.5% to +8.0%
Precipitation as Snow (%)	Annual	-28%	-35% to -26%
	Winter	-20%	-25% to -15%
	Spring	-47%	-54% to -41%
Frost-Free Days (days)	Annual	+44 days	+34 to +63 days

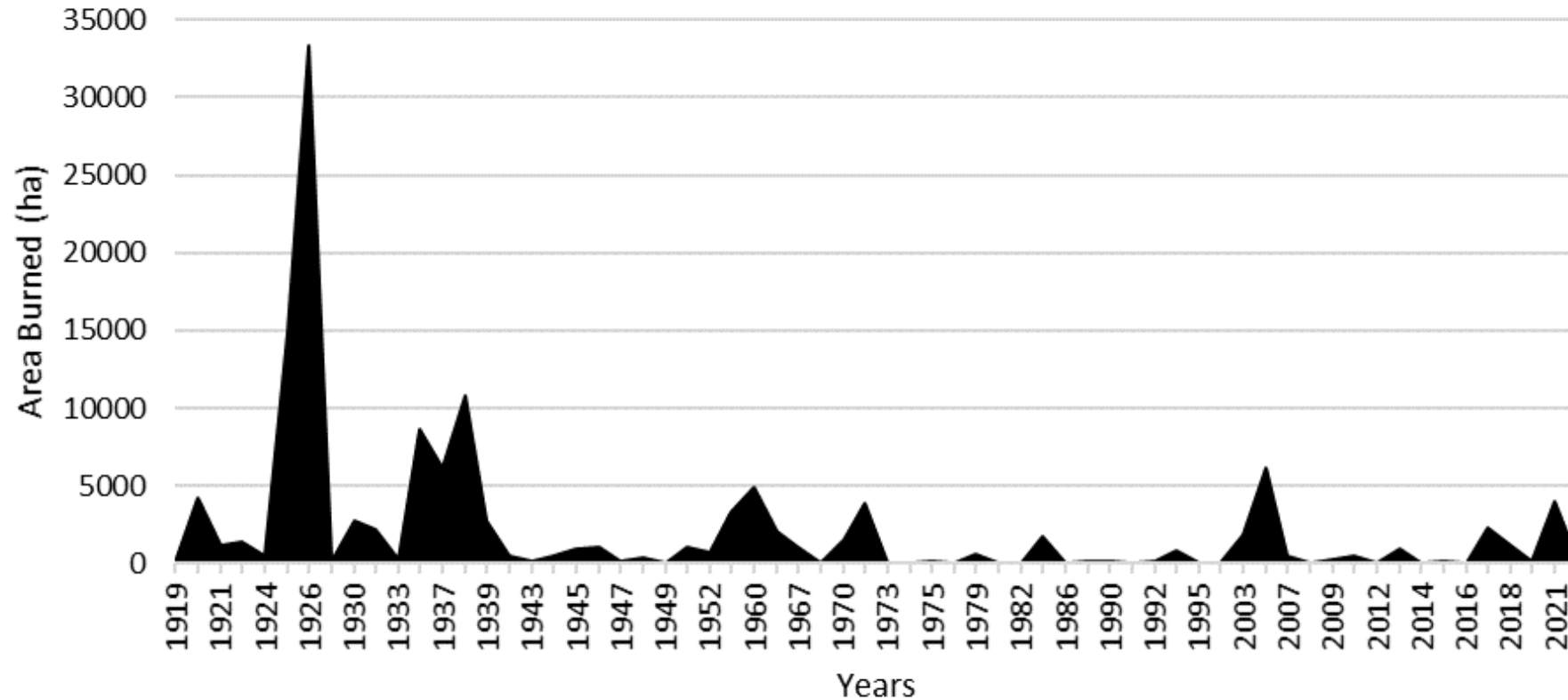
# Wildfire Risk Assessment



**Fire Perimeters from 1919-2022  
Area A & B**

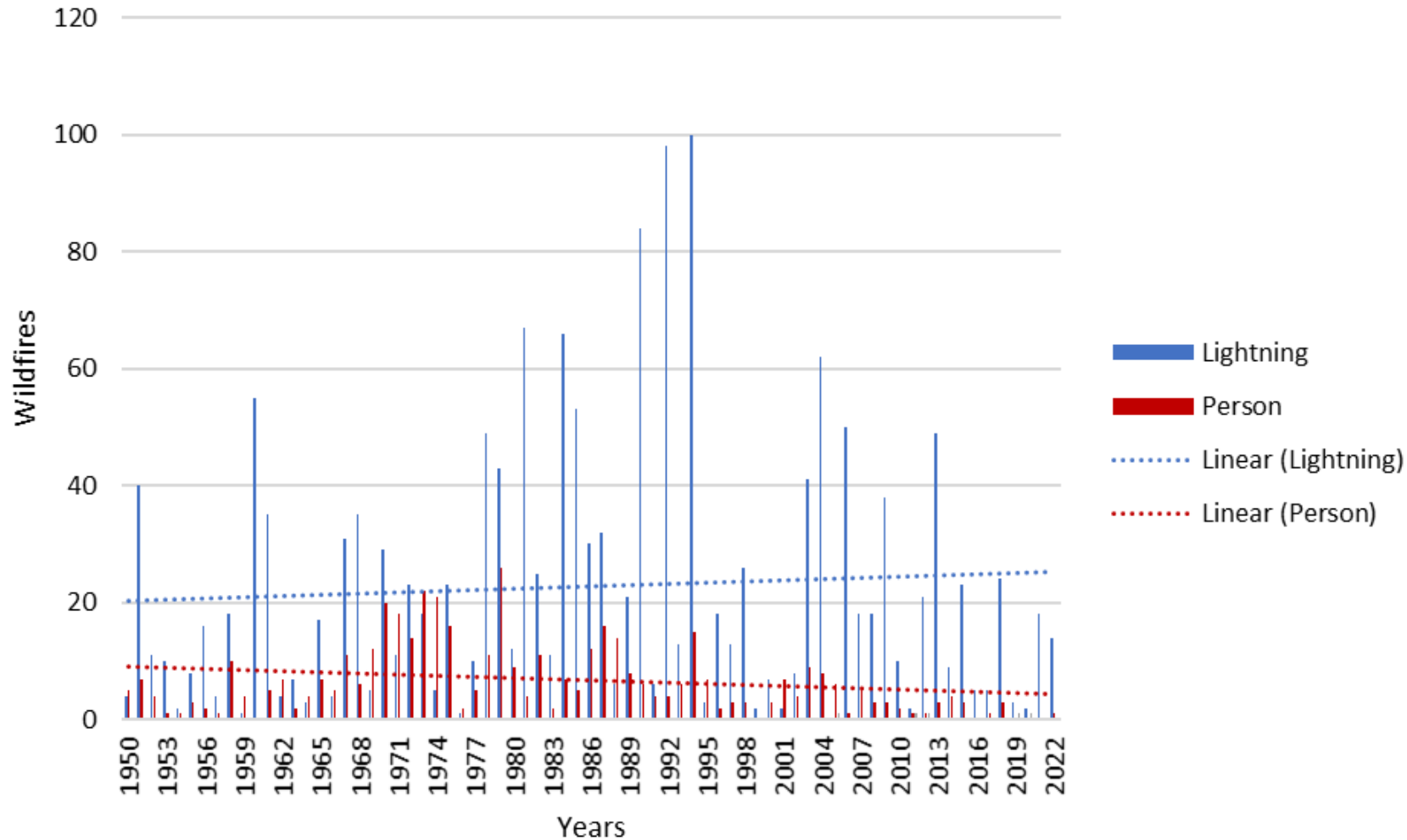


# Wildfire Risk Assessment



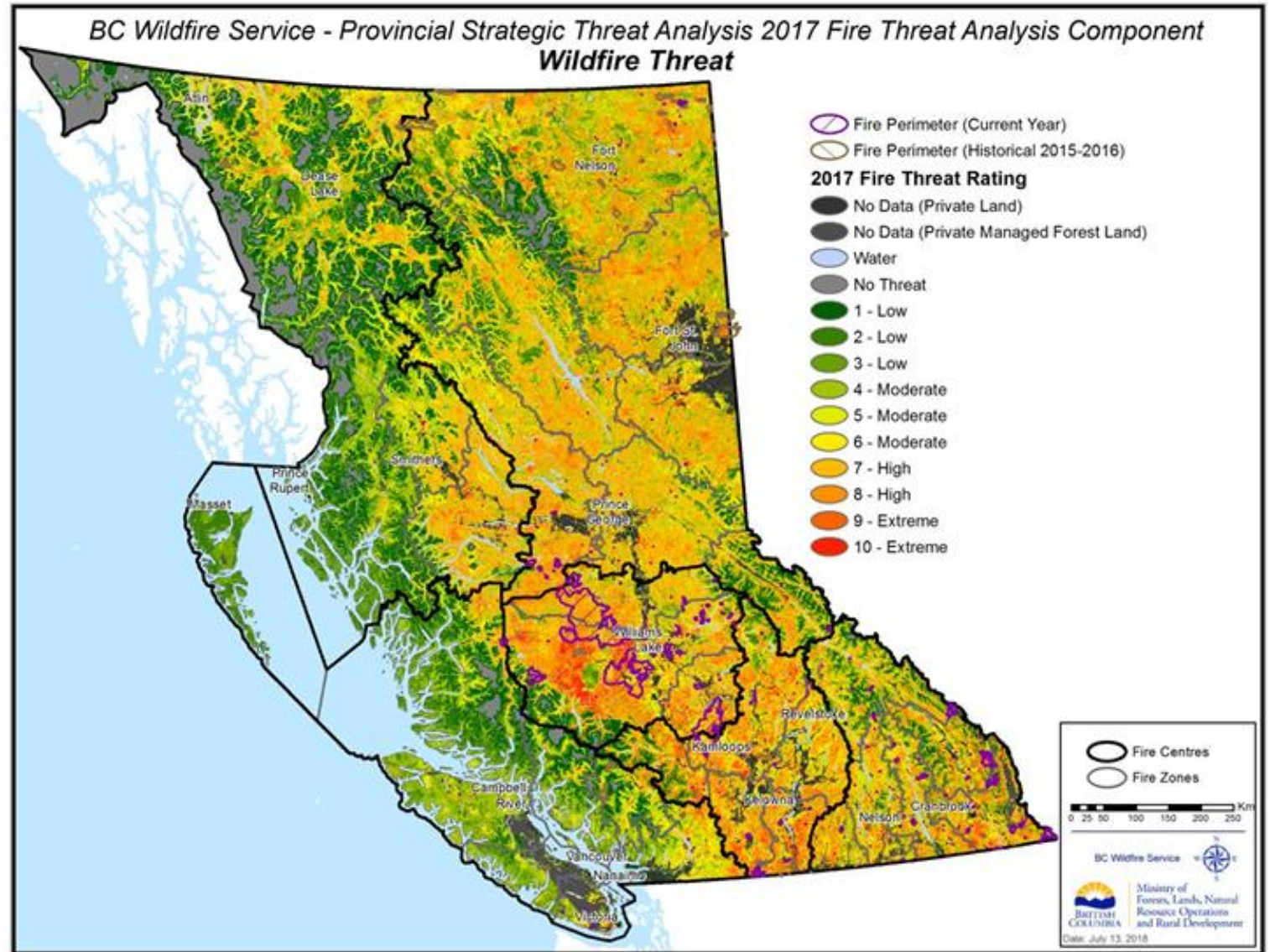
Wildfire burned area (ha) within Wells Gray Country Boundary, from 1919-2022.

# Wildfire Risk Assessment



Annual wildfire occurrence within the Wells Gray Country electoral area boundary, from 1950 to 2022.

# Provincial Strategic Threat Assessment (PSTA)



# Provincial Strategic Threat Assessment (PSTA)

PSTA Threat Rating	Area (ha)	%
No Data (Private Land)	8537.256886	53.0%
Moderate	3387.88302	21.0%
High	1773.086996	11.0%
Extreme	866.80041	5.4%
Water	811.792599	5.0%
Low	567.24699	3.5%
No Data (Private Managed Forest Land)	168.738526	1.0%
Total	16112.80543	100.00%

PSTA Threat Rating	Area (ha)	%
Moderate	201947.2087	27.6%
Extreme	170538.0579	23.3%
Low	165702.875	22.7%
High	149765.1141	20.5%
No Data (Private Land)	10912.61367	1.5%
Water	31704.1789	4.3%
No Data (Private Managed Forest Land)	198.74955	0.03%
No Threat	16.25	0.002%
Total	730785.0479	100.0%

Within the  
1km Eligible  
WUI

Across all of  
Wells Gray  
Country



# Seven FireSmart Disciplines

---

## TOGETHER WE ARE PREPARED



# Seven FireSmart Disciplines



# Vegetation Management

---



## Goal:

- Reduce intensity and spread of wildfire
- Two levels: Residential landscaping and fuel management treatments

# Vegetation Management



Image Source: FireSmart Canada

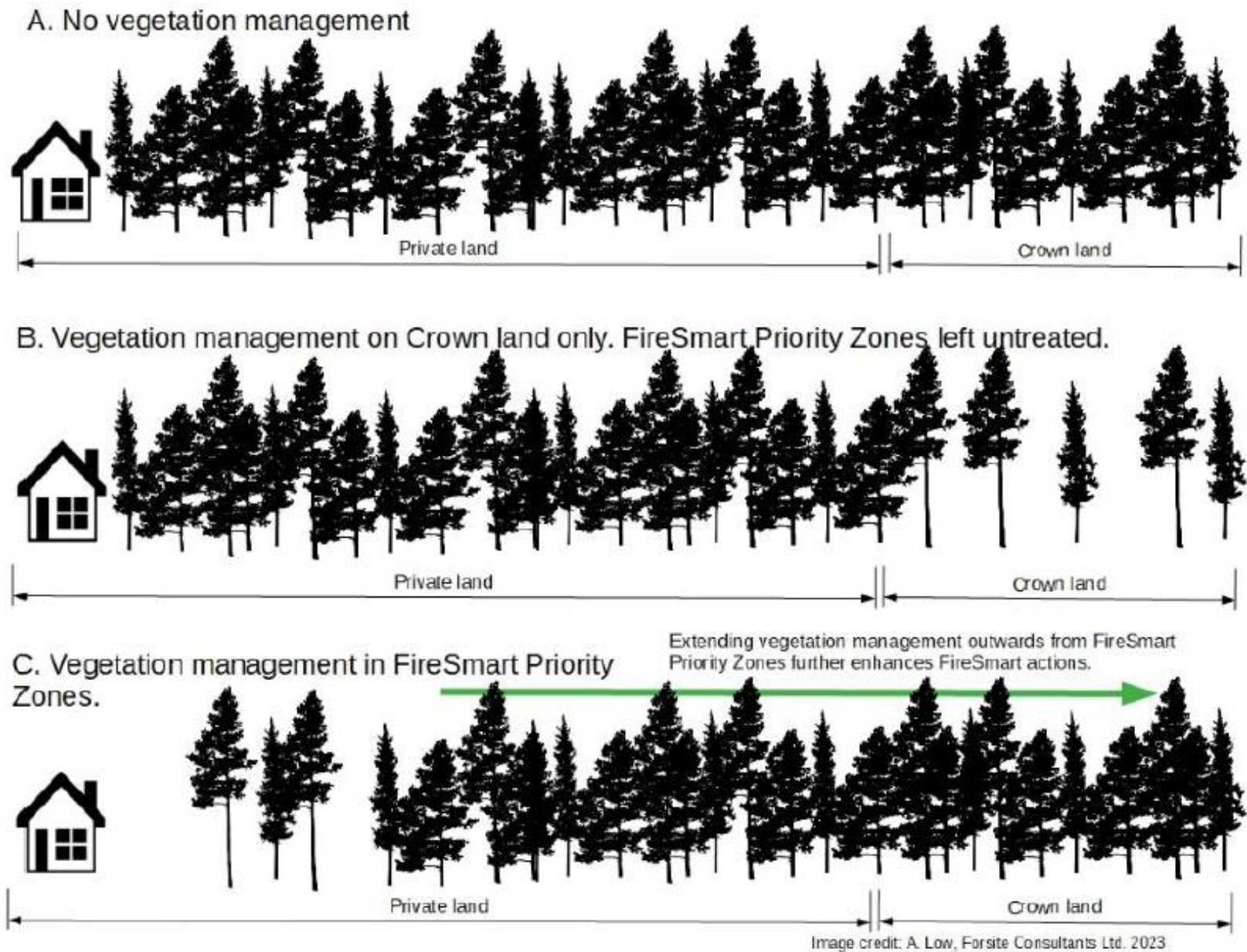


Figure 21 Vegetation management actions are most effective when they prioritize fuel hazard mitigation beginning in the FireSmart priority zones and progressing outwards.

# Action Plan & Recommendations

---

- List of Action Items
  - Primarily focused on CRI funding
- Proposed Fuels Treatments (in progress)



Photo credit: Hailey Sigalet



Photo credit: Hailey Sigalet

# Questions?

---



**Andy Low, RPF**

Senior Wildland Fire Specialist  
Kamloops, BC

cell 778-220-7834



**Hailey Sigalet, RPF**

Fuel Management Specialist  
Kamloops, BC

cell 778-678-4636