

# Community Wildfire Resiliency Plan

---

**Thompson-Nicola Regional District Electoral  
Area “B” (Thompson Headwaters)**



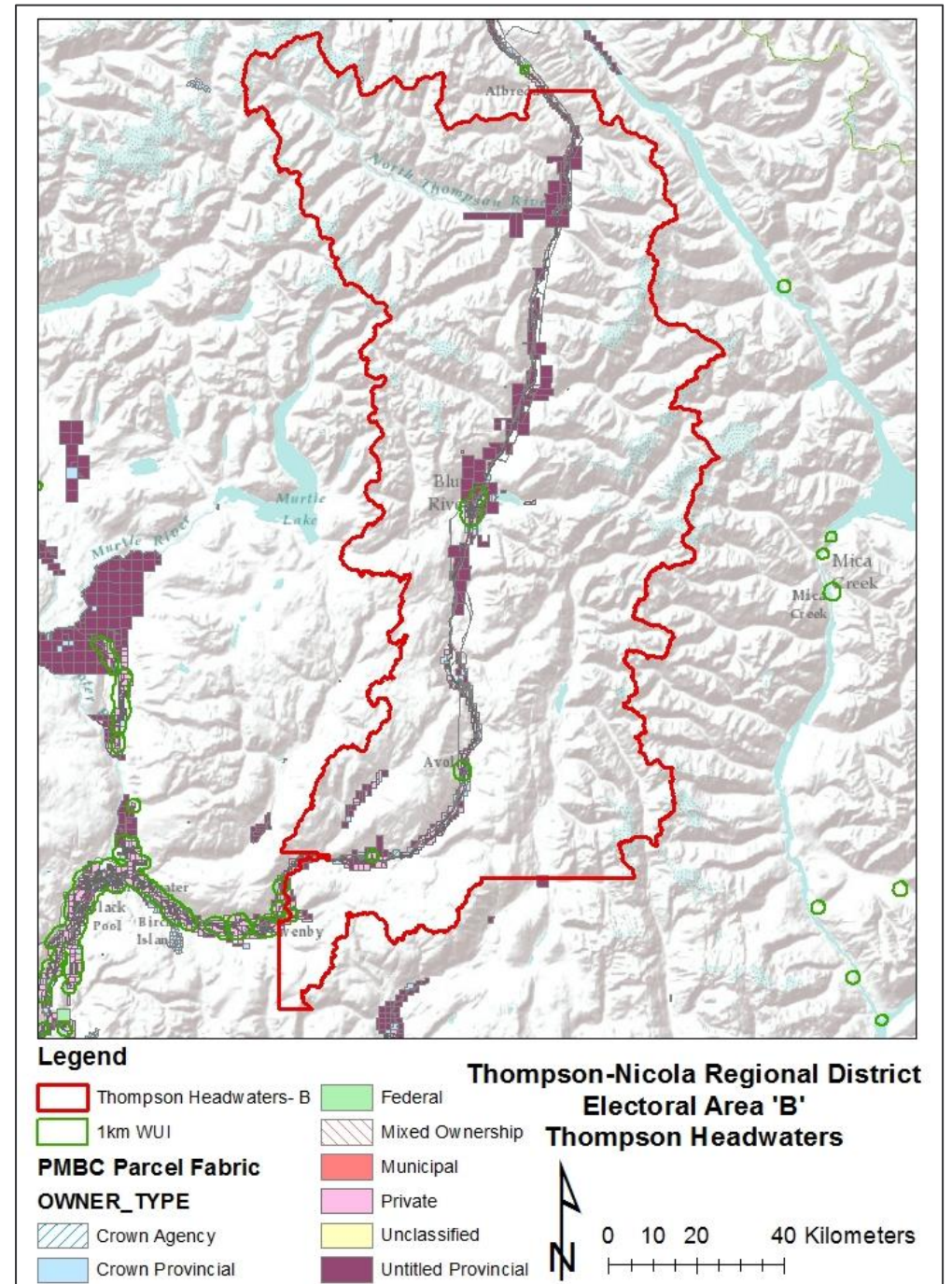
# Outline

---

- ① **Community Wildfire Resiliency Plan**
- ② **Community Description**
- ③ **Wildfire Risk Assessment**
- ④ **Seven FireSmart Disciplines**
- ⑤ **Action Plan & Recommendations**
- ⑥ **Questions**



# Area of Interest





# Community Wildfire Resiliency Plan

---

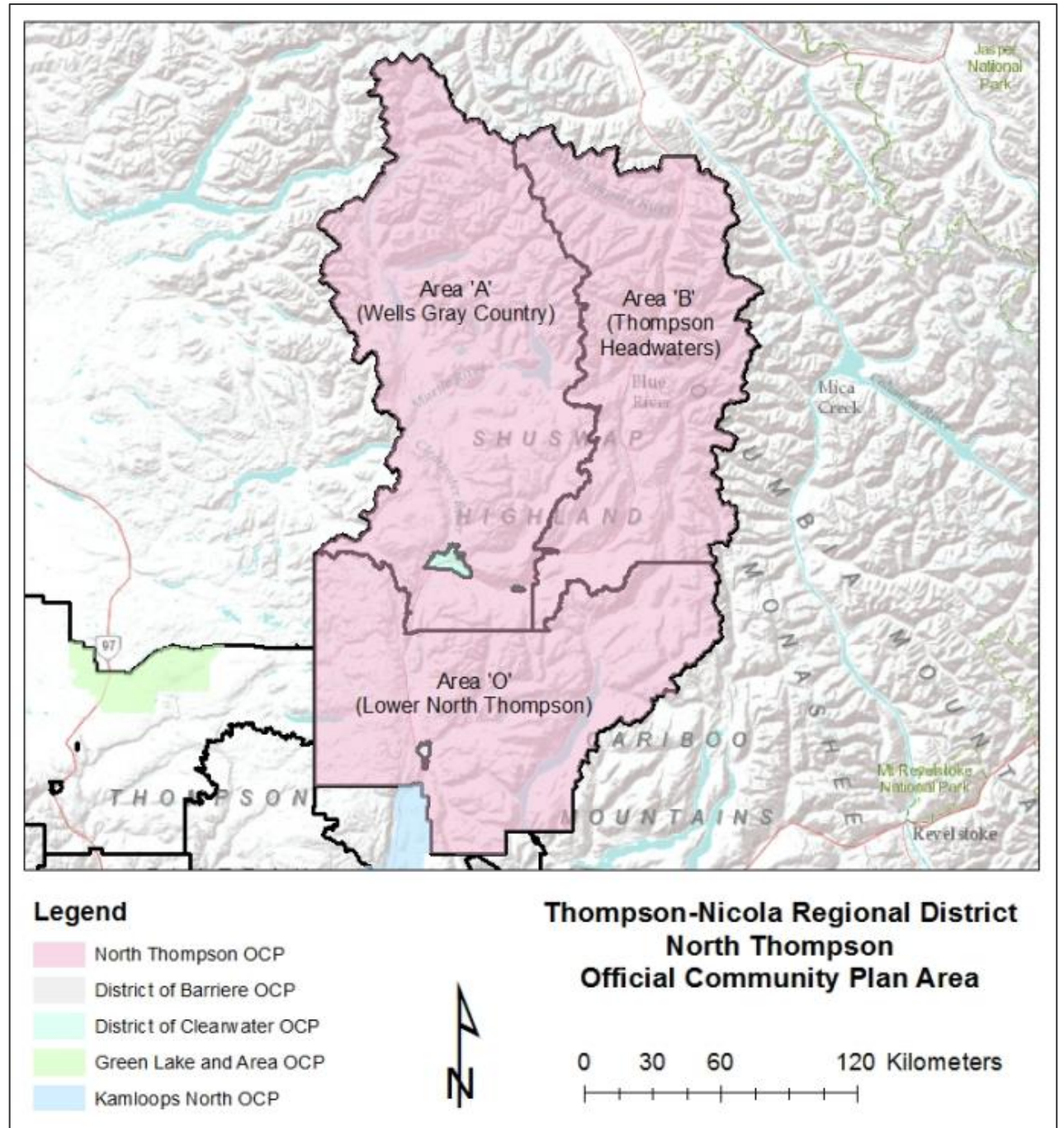
- High level plan
- Improve a community's wildfire preparedness
- Mitigate losses from possible wildfire
- Seven FireSmart principles
- Unlocks government funding sources



Photo credit: Madison Hughes



# Community Description



# Community Description - Demographics

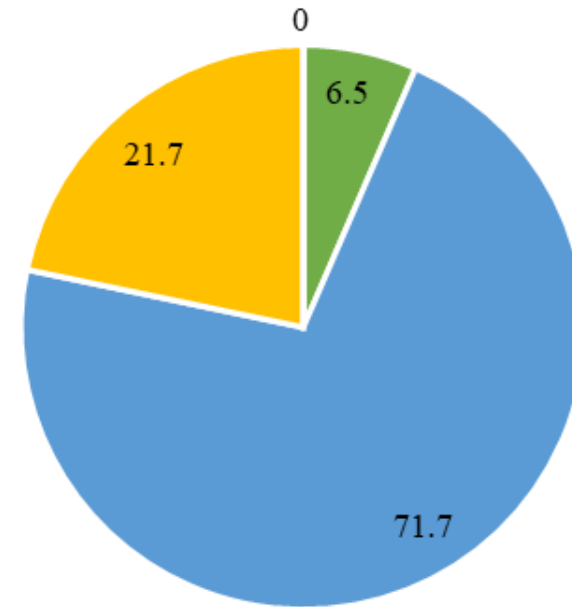
---

Total Population: 230 (2021)

Population Growth: -1.3% since 2016

- 0 to 14 years
- 15 to 64 years
- 65 to 84 years
- 85 years and over

Thompson Headwaters



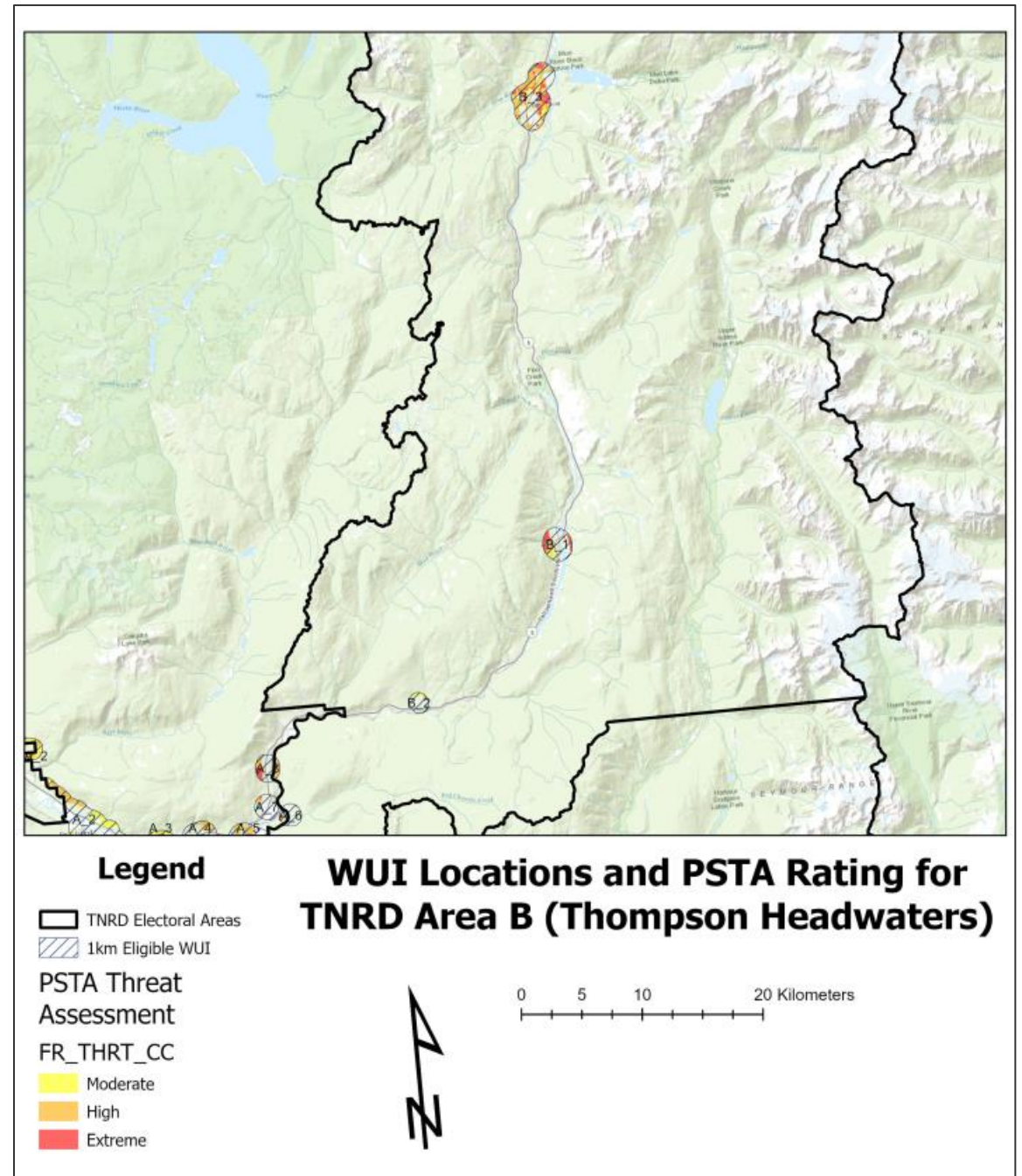
# Community Description - Land Ownership

---

<b>Owner Type</b>	<b>Area (ha) Total</b>	<b>%</b>	<b>Area (ha) in WUI</b>	<b>%</b>
Untitled Provincial	18525.69	70.8%	674.5	33.2%
Private	4881.22	18.7%	1054.24	51.8%
Crown Provincial	2410.33	9.2%	153.84	7.6%
Crown Agency	271.45	1.0%	108.77	5.3%
Unclassified	66.78	0.3%	28.95	1.4%
Municipal	13.14	0.1%	12.99	0.6%
Federal	0.08	0.0003%	0.08	0.004%
<b>Total</b>	<b>26168.69</b>	<b>100.0%</b>	<b>10641.49</b>	<b>100.0%</b>

# Wildfire Risk Assessment

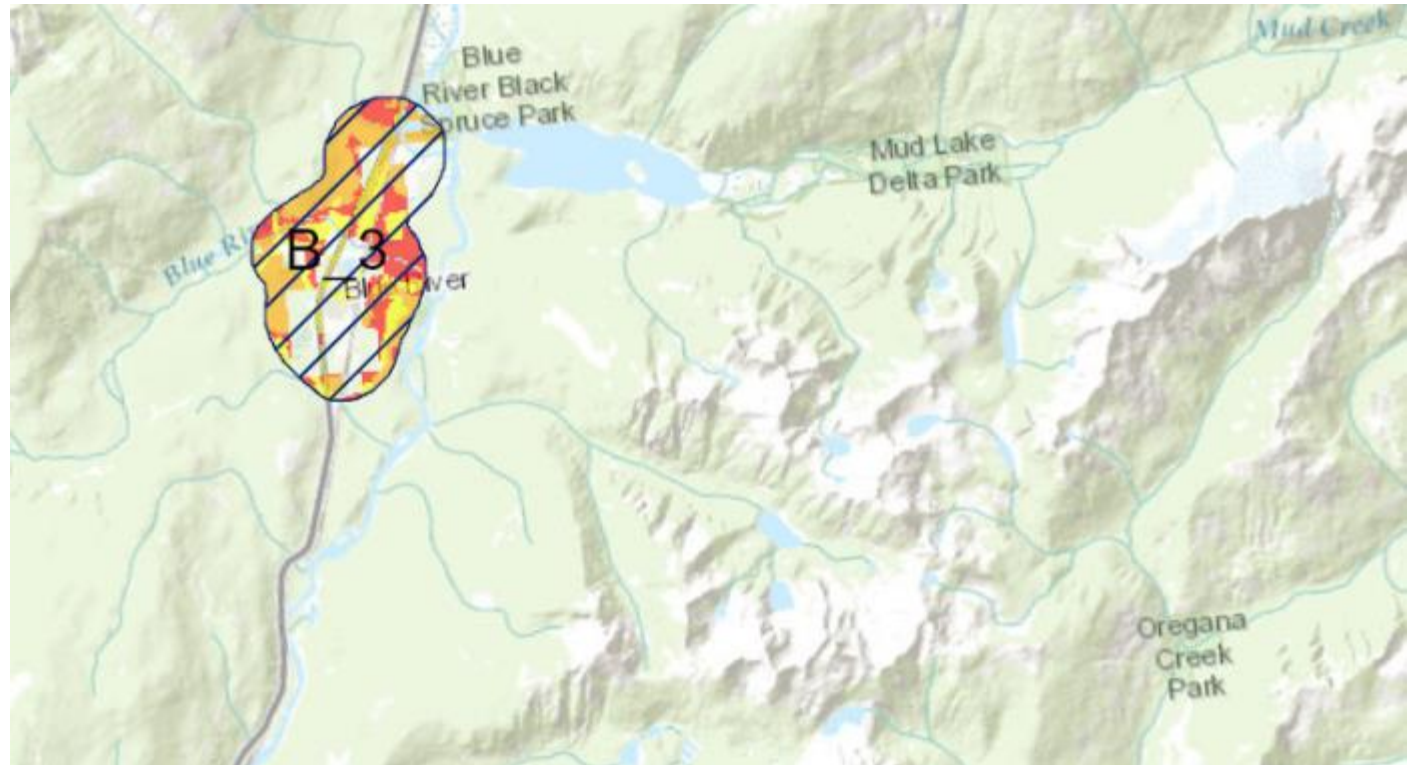
---





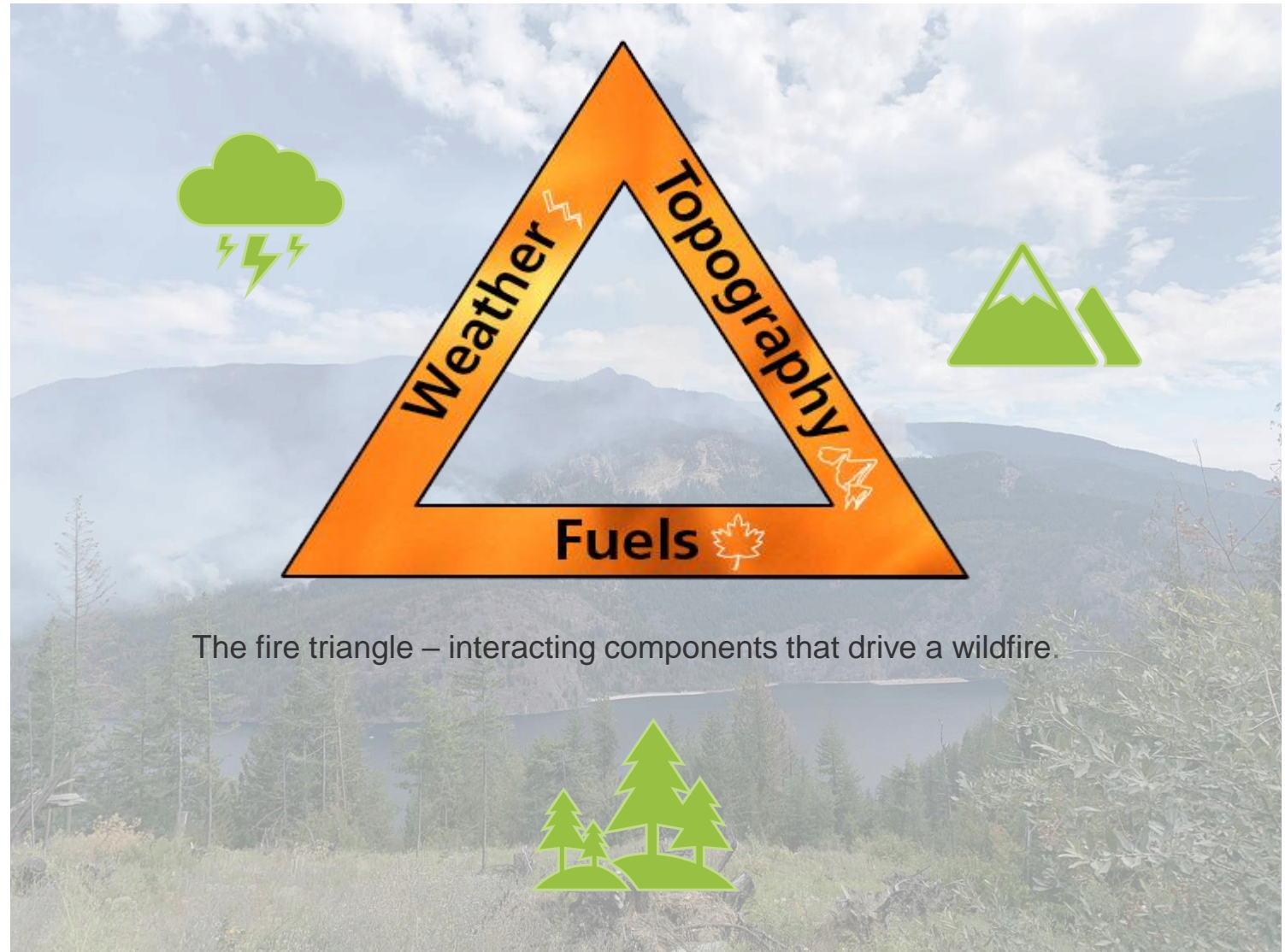
# Wildfire Risk Assessment – “1km Eligible WUI”

WUI: *Wildland  
Urban Interface*



# Wildfire Risk Assessment – The Fire Environment

---

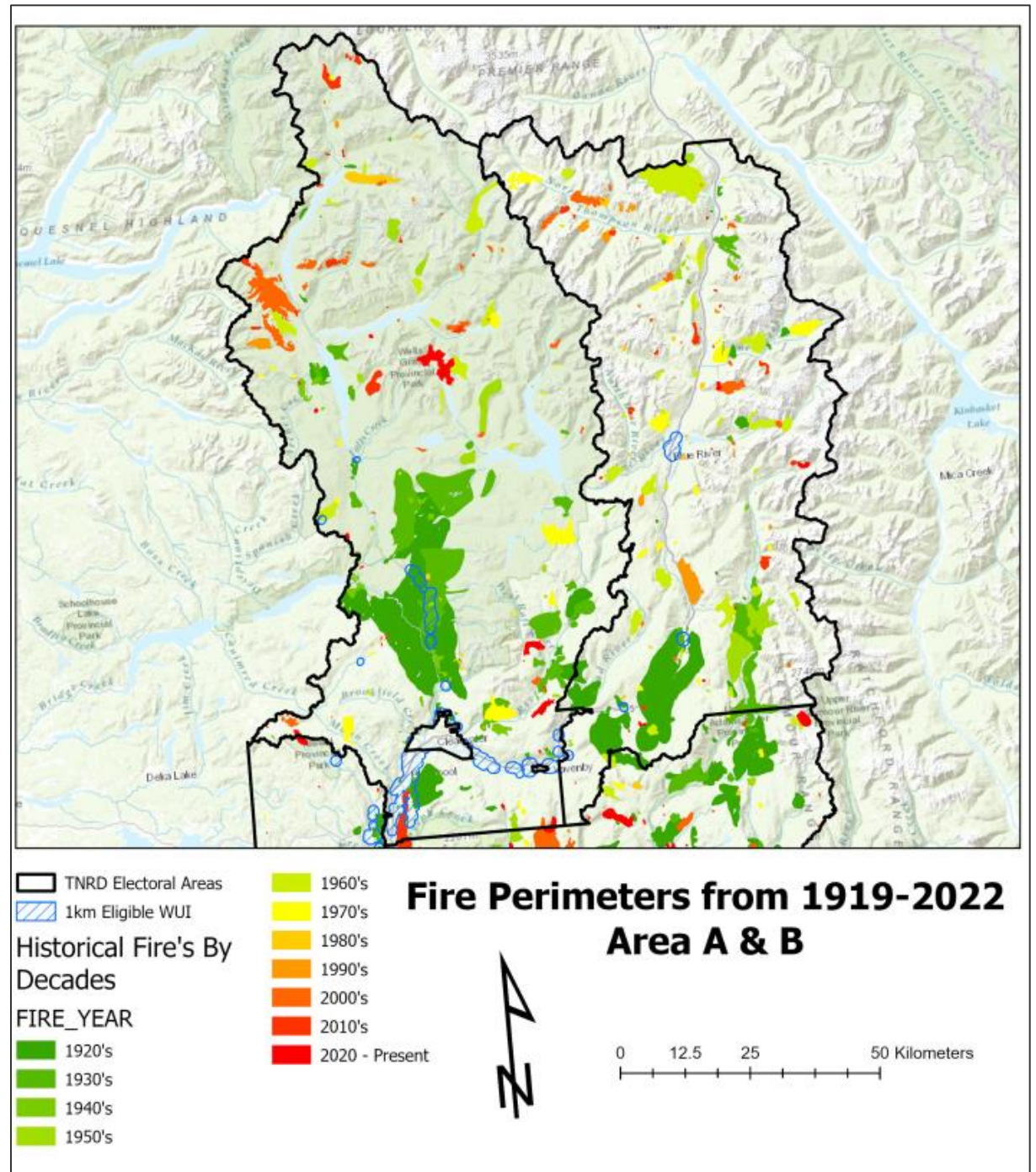


The fire triangle – interacting components that drive a wildfire.



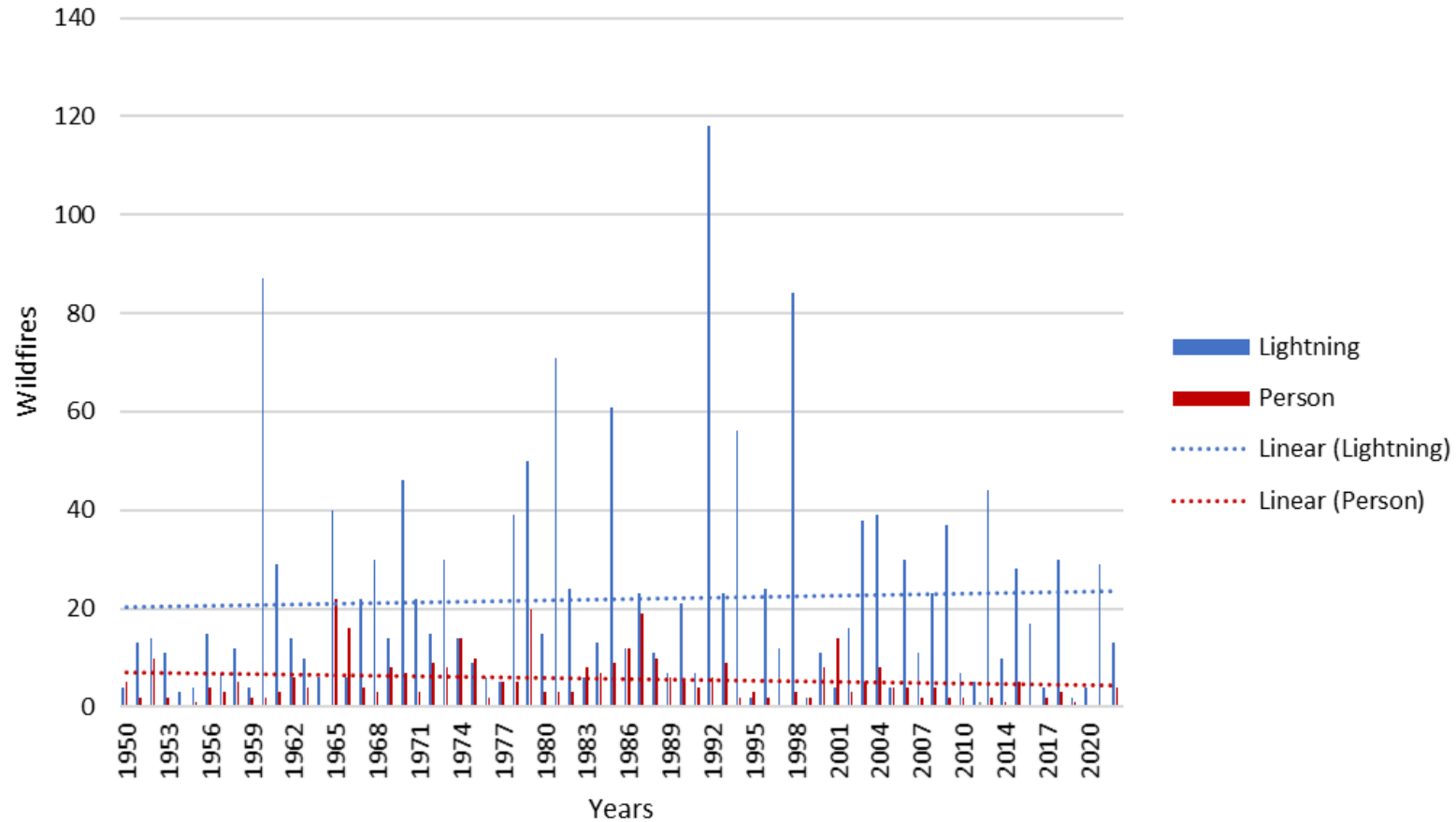
Climate Variable	Season	Projected Change from 1961-1990 Baseline	
		Ensemble Median	Range (10th to 90th percentile)
Temperature (°C)	Annual	+3.2 °C	+2.2 °C to +4.2 °C
Precipitation (%)	Annual	2.60%	-0.53% to +8.8%
	Summer	1.10%	-25% to +7.8%
	Winter	1.80%	-1.5% to +8.0%
Precipitation as Snow (%)	Annual	-28%	-35% to -26%
	Winter	-20%	-25% to -15%
	Spring	-47%	-54% to -41%
Frost-Free Days (days)	Annual	+44 days	+34 to +63 days

# Wildfire Risk Assessment – Fire History





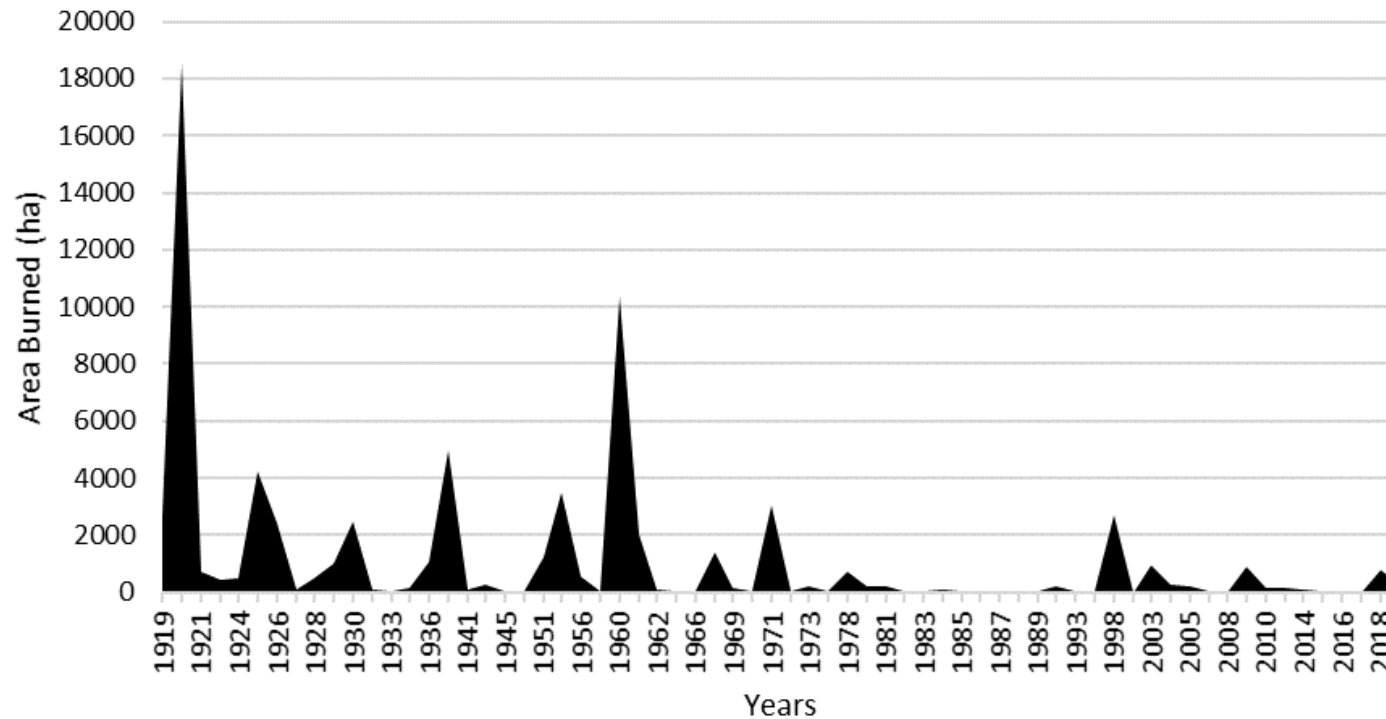
# Wildfire History (1950 -2022)



Annual wildfire occurrence within the Thompson Headwaters electoral area boundary, from 1950 to 2022.

# Area Burned (1919 -2022)

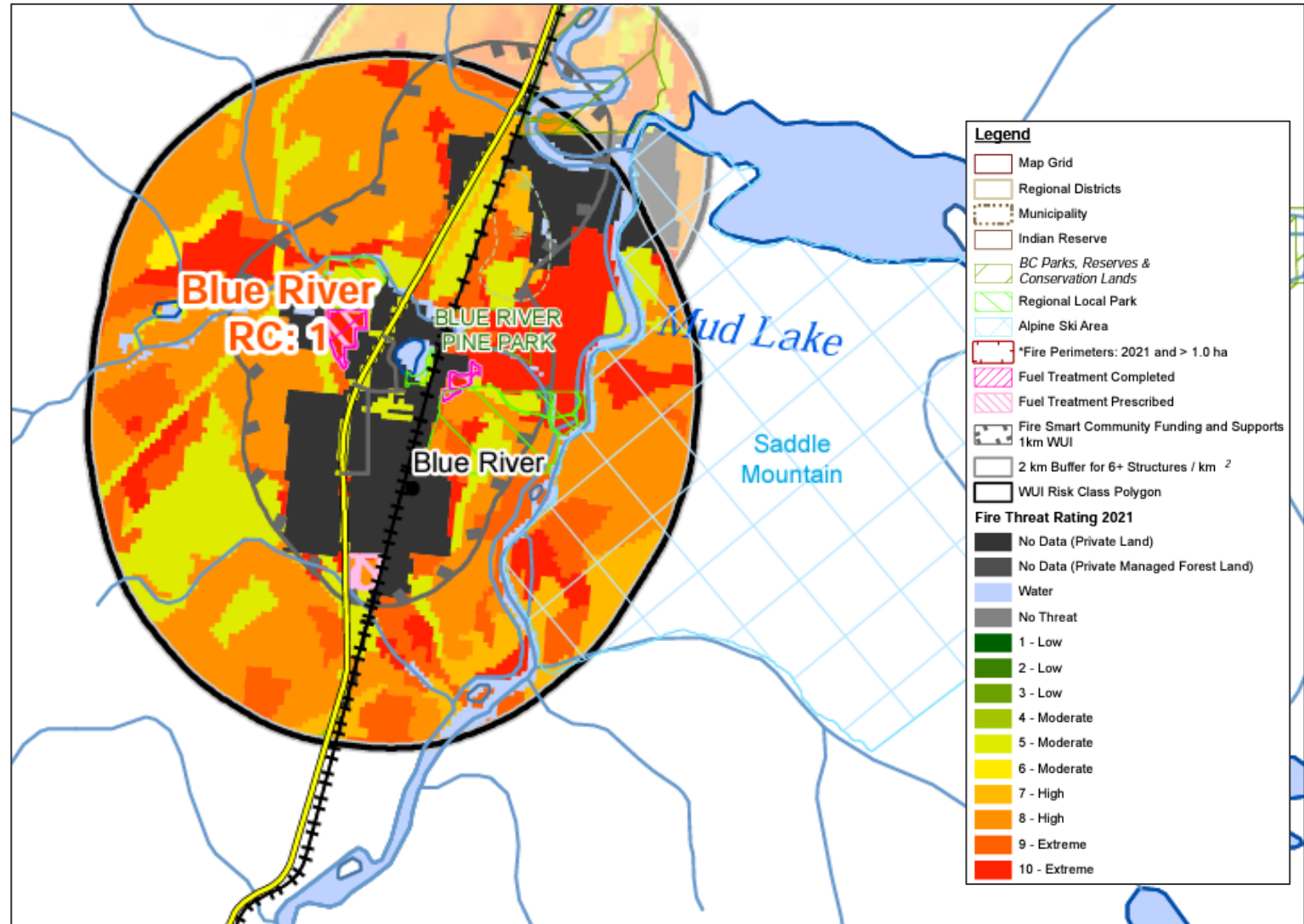
---



Area burned within the Thompson Headwaters electoral area boundary, from 1919 to 2022.



# Provincial Strategic Threat Assessment (PSTA)



# Provincial Strategic Threat Assessment (PSTA)

PSTA Threat Rating	Area (ha)	%
No Data (Private Land)	1084.435511	46.1%
High	464.174824	19.7%
Extreme	372.726019	15.8%
Moderate	305.402917	13.0%
Water	125.399397	5.3%
Total	2352.138668	100.0%

Within the 1km Eligible WUI.

PSTA Threat Rating	Area (ha)	%
Extreme	174671.1978	33.9%
High	131195.2529	25.5%
Moderate	122292.5396	23.7%
Low	76267.42077	14.8%
Water	5695.036835	1.1%
No Data (Private Land)	5104.635495	1.0%
No Threat	150.361395	0.03%
Total	515376.4448	100.0%

Across all Thompson Headwaters area.



# Seven FireSmart Disciplines

---

## TOGETHER WE ARE PREPARED



# Seven FireSmart Disciplines



# Vegetation Management

---



## Goal:

- Reduce intensity and spread of wildfire
- Two levels:
  - Residential
  - Landscape



# Vegetation Management



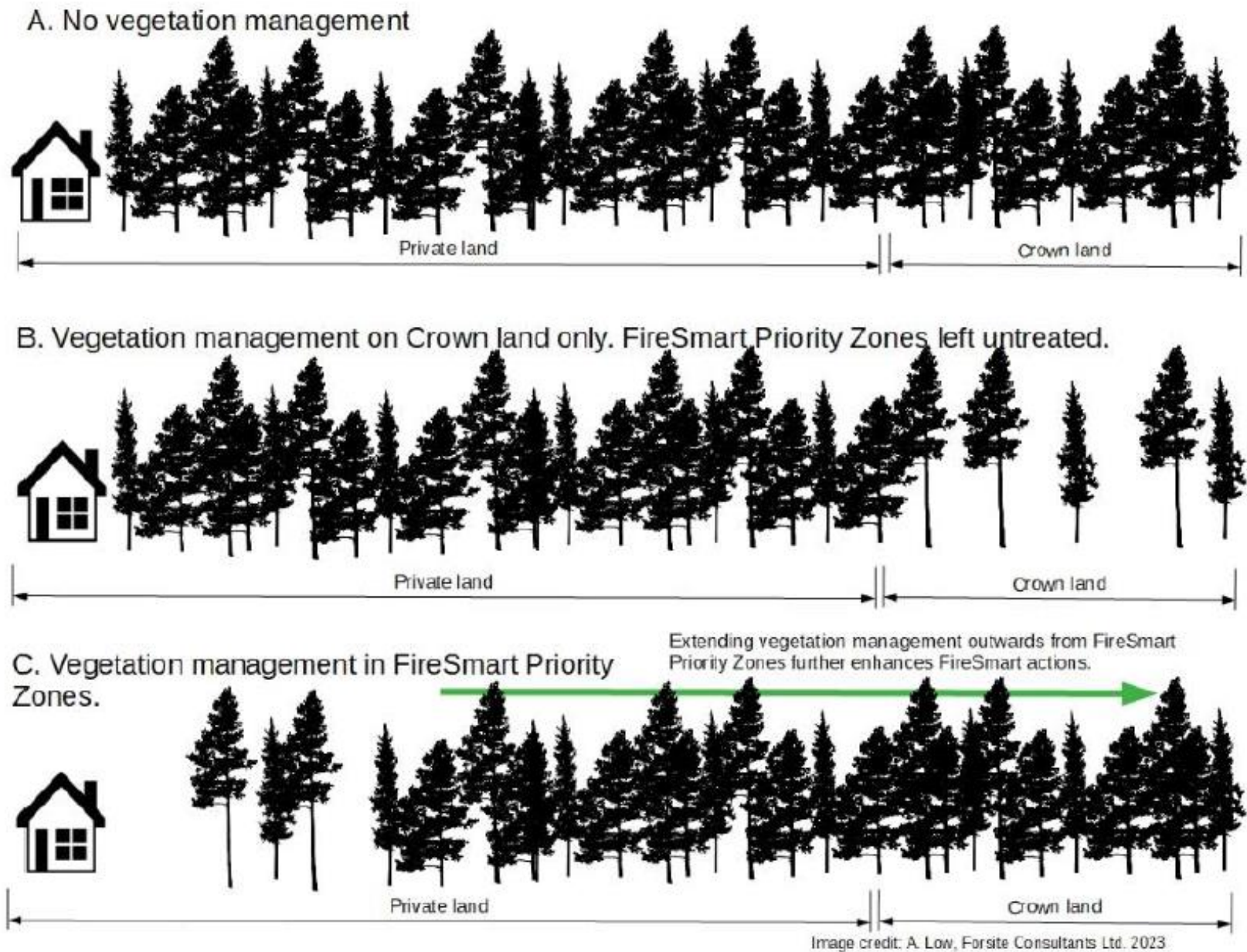


Figure 21 Vegetation management actions are most effective when they prioritize fuel hazard mitigation beginning in the FireSmart priority zones and progressing outwards.

# Action Plan & Recommendations

---

- List of Action Items
  - Primarily focused on CRI funding
- Proposed Fuels Treatments (in progress)



Photo credit: Madison Hughes





Photo credit: Hailey Sigalet

# Questions?

---



**Andy Low, RPF**

Senior Wildland Fire Specialist  
Kamloops, BC

cell 778-220-7834



**Hailey Sigalet, RPF**

Fuel Management Specialist  
Kamloops, BC

cell 778-678-4636