

# Community Wildfire Resiliency Plan

---

Thompson-Nicola Regional District Electoral  
Area “E” (Bonaparte Plateau)

# Outline

---

- ① **Community Wildfire Resiliency Plan**
- ② **Community Description**
- ③ **Wildfire Risk Assessment**
- ④ **Seven FireSmart Disciplines**
- ⑤ **Action Plan & Recommendations**
- ⑥ **Questions**





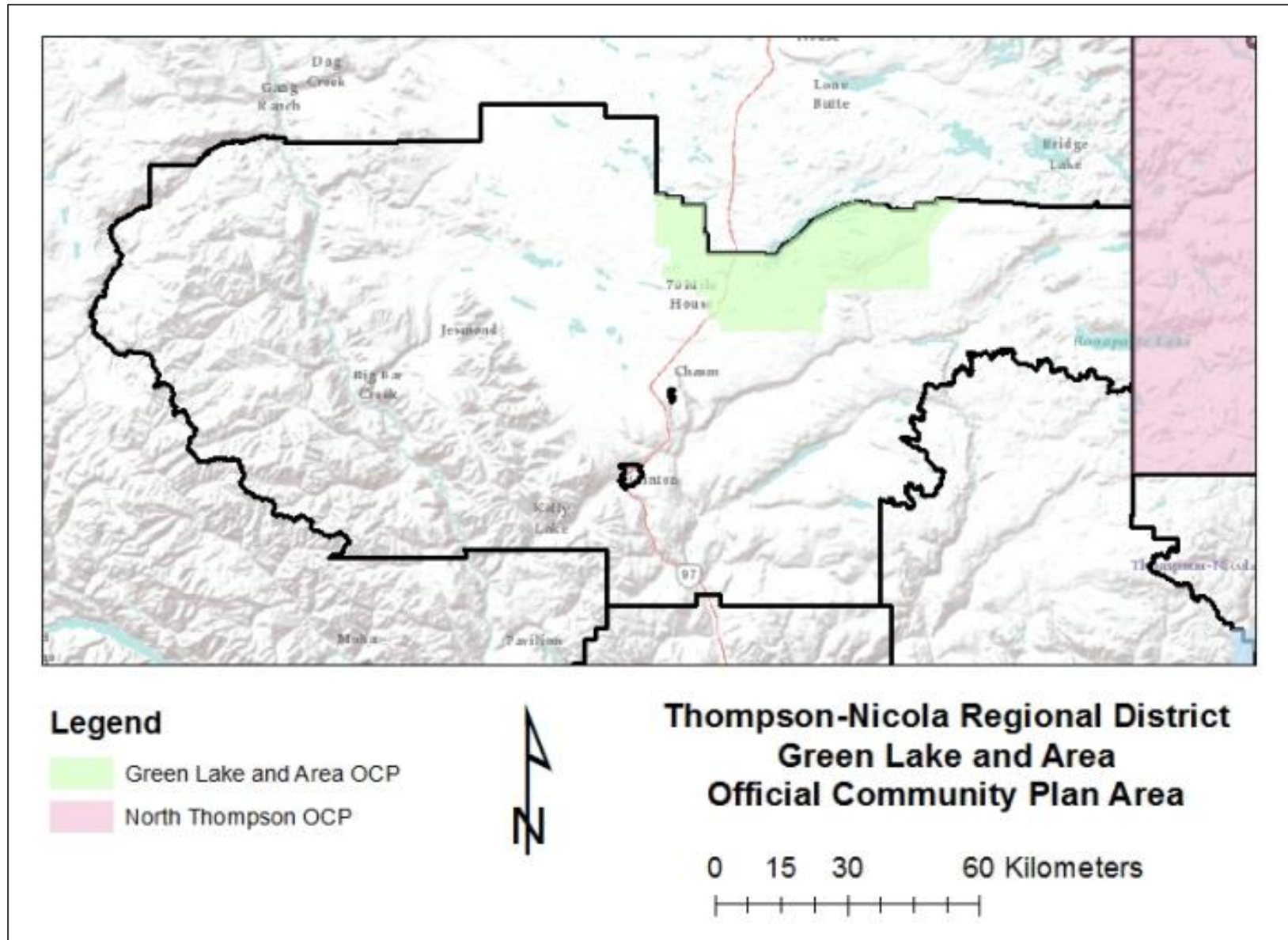
# Community Wildfire Resiliency Plan

---

- High level plan
- Improve a community's wildfire preparedness
- Mitigate losses from possible wildfire
- Seven FireSmart principles
- Unlocks government funding sources

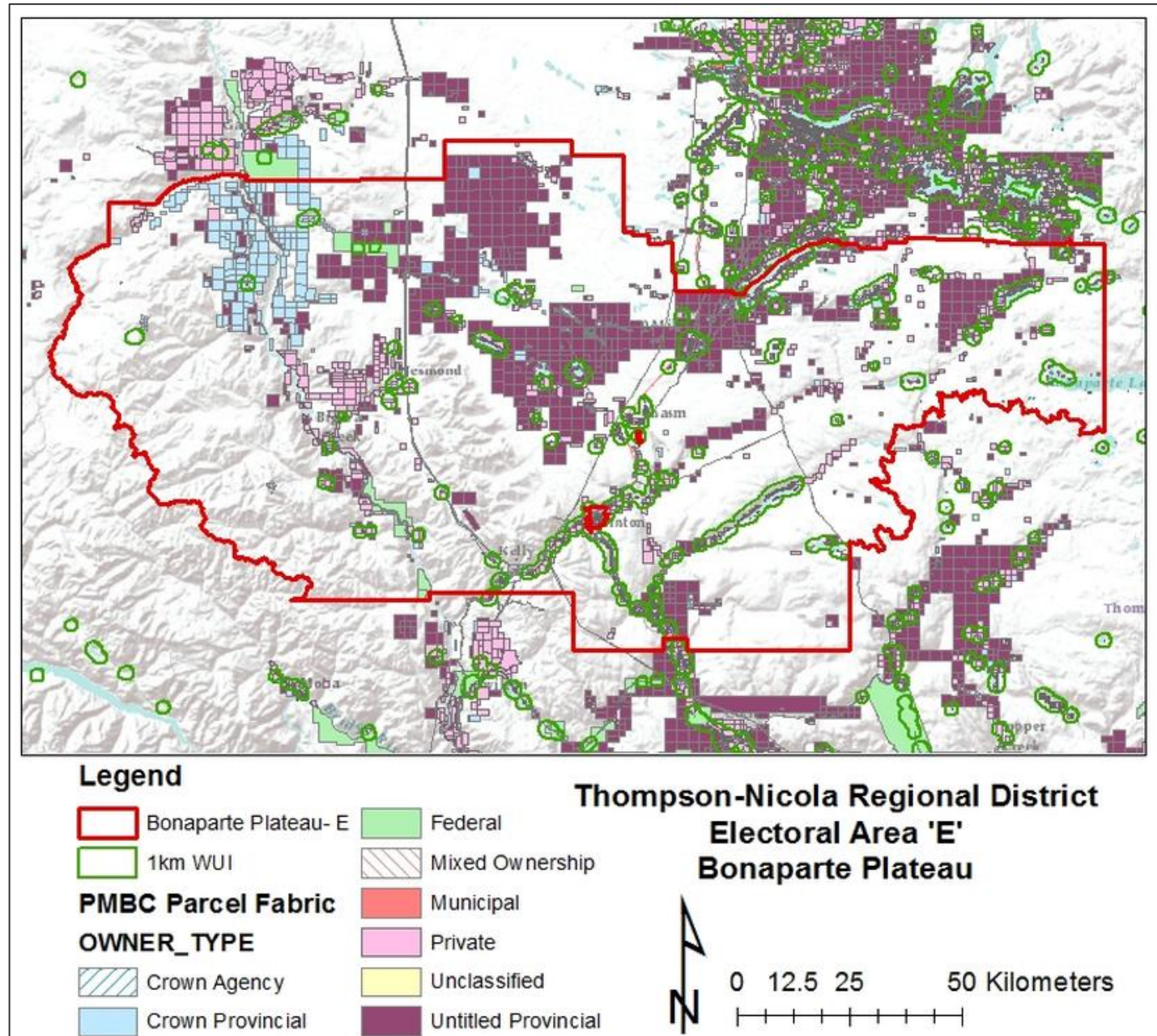


# Community Description





# Area of Interest



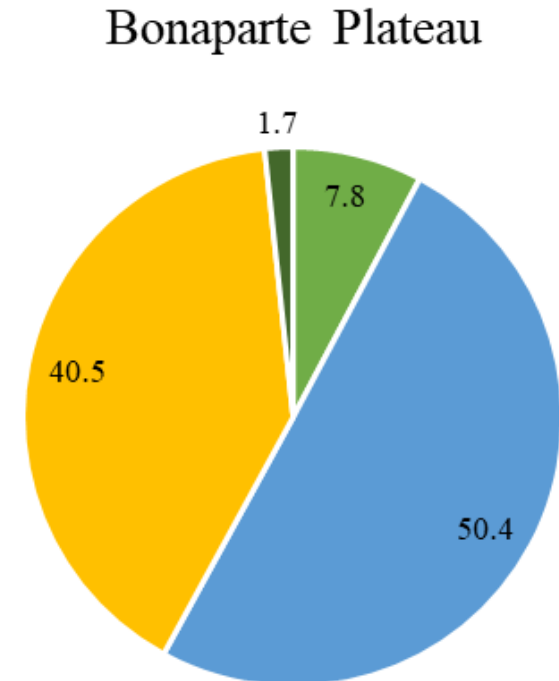
# Community Description - Demographics

---

Total Population: 1,162 (2021)

Population Growth: 6.2% since 2016

- 0 to 14 years
- 15 to 64 years
- 65 to 84 years
- 85 years and over



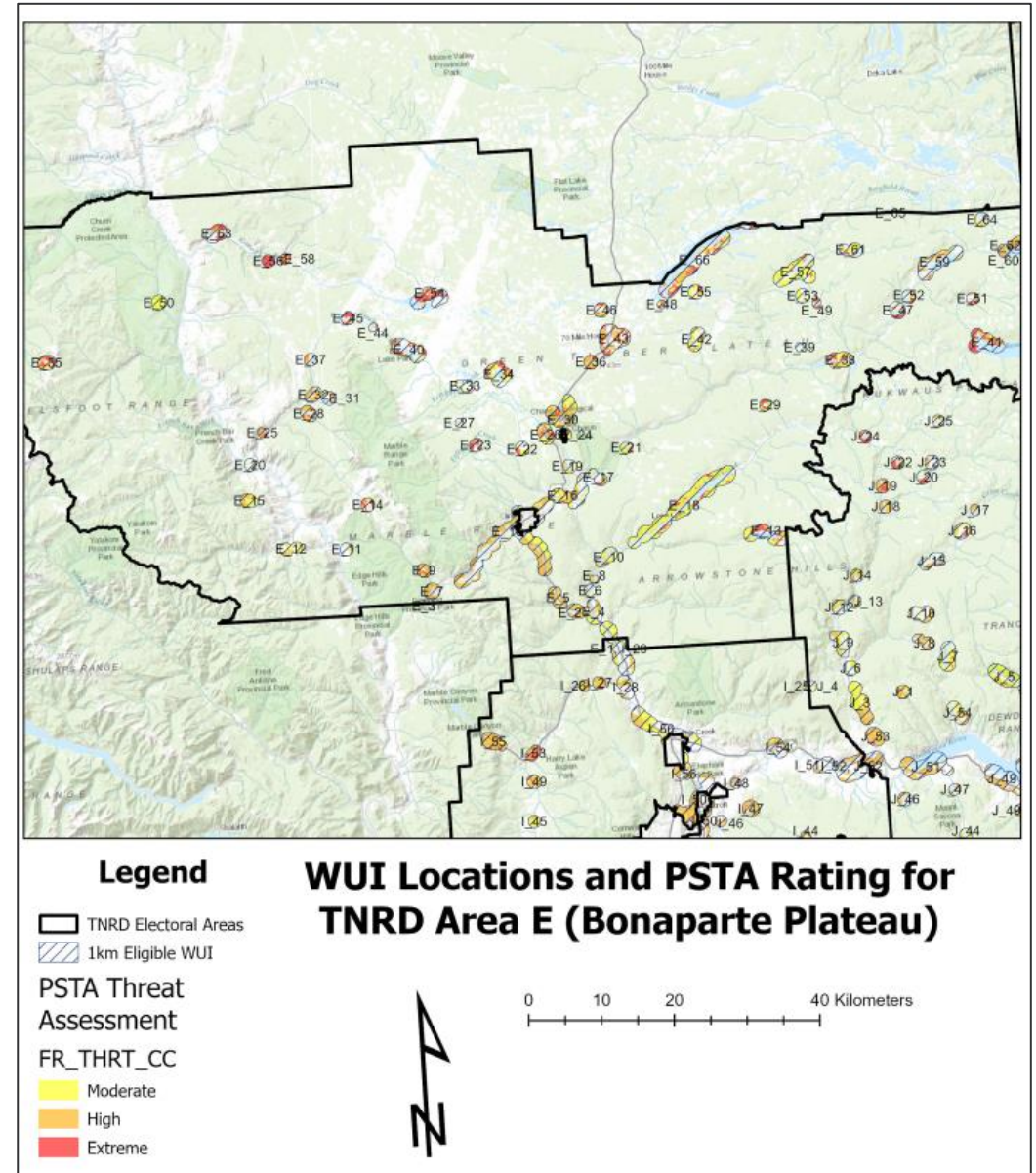
# Community Description - Land Ownership

---

<b>Owner Type</b>	<b>Area (ha) Total</b>	<b>%</b>	<b>Area (ha) in WUI</b>	<b>%</b>
Untitled Provincial	462744.3361	49.0%	6457.77	31.6%
Private	323017.1172	34.2%	11231.13	54.9%
Federal	76108.14814	8.1%	563.38	2.8%
Crown Provincial	70450.30621	7.5%	1913.05	9.4%
Unclassified	7988.320335	0.8%	18.65	0.1%
Crown Agency	3179.647755	0.3%	228.81	1.1%
Municipal	774.143785	0.1%	26.46	0.1%
Mixed Ownership	106.58784	0.01%	0.0	0.0%
<b>Total</b>	<b>944368.6074</b>	<b>100.0%</b>	<b>20439.25</b>	<b>100.0%</b>



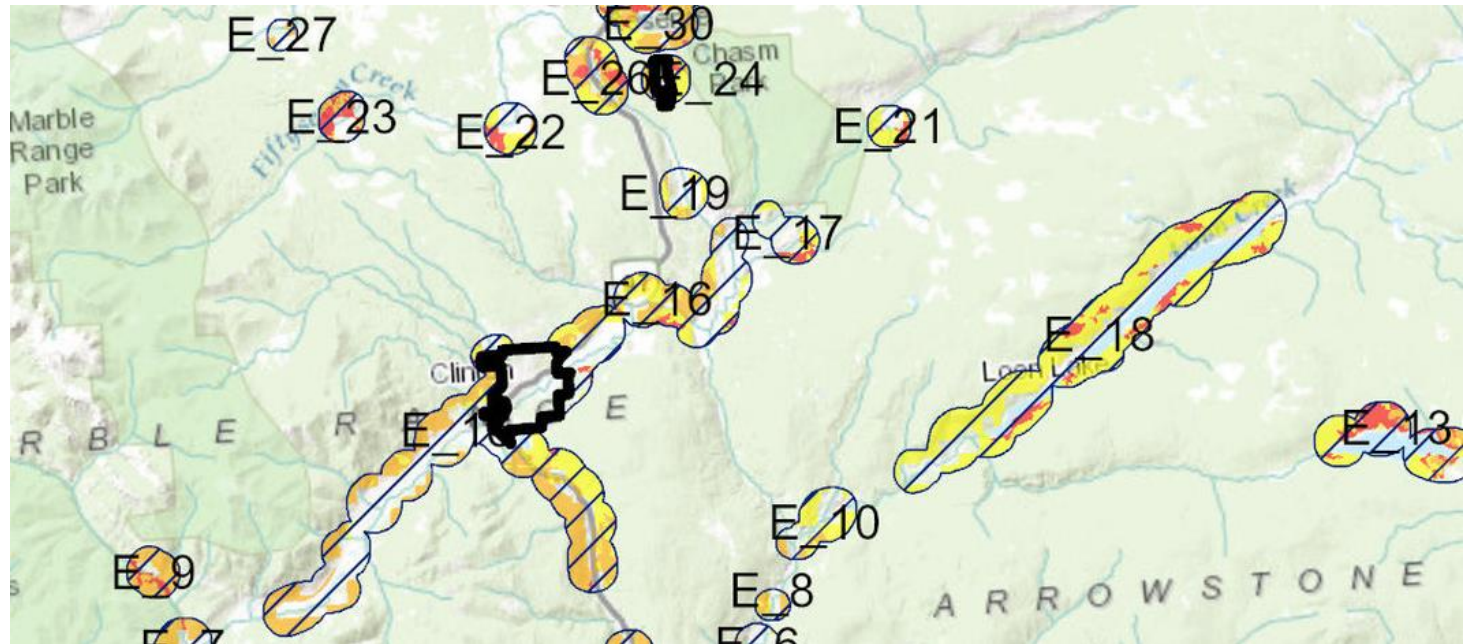
# Wildfire Risk Assessment





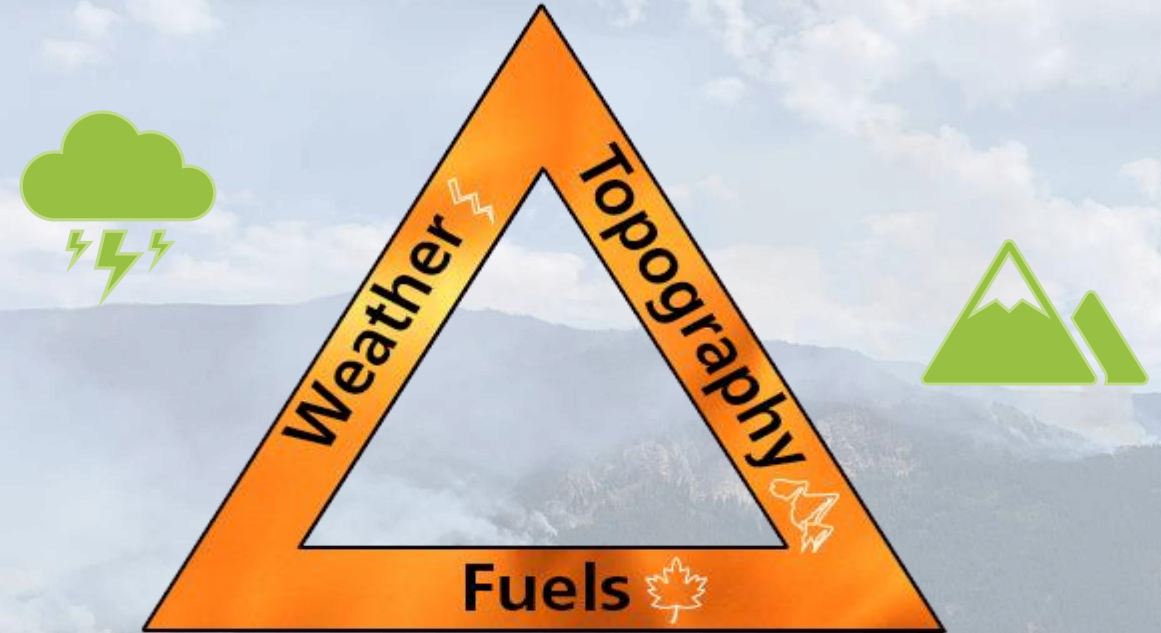
# Wildfire Risk Assessment – “1km Eligible WUI”

WUI: *Wildland  
Urban Interface*



# Wildfire Risk Assessment – The Fire Environment

---

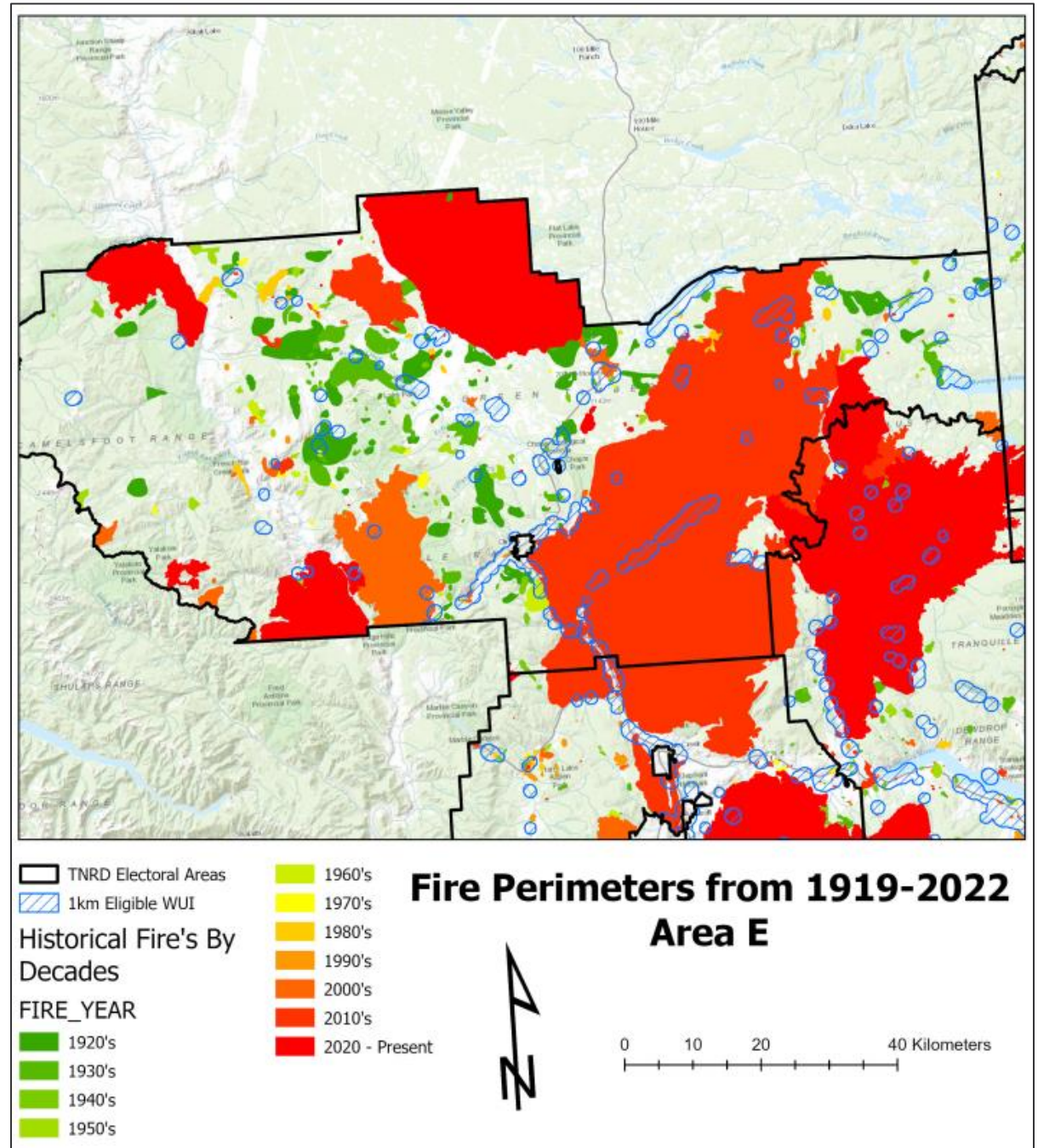


The fire triangle – interacting components that drive a wildfire.



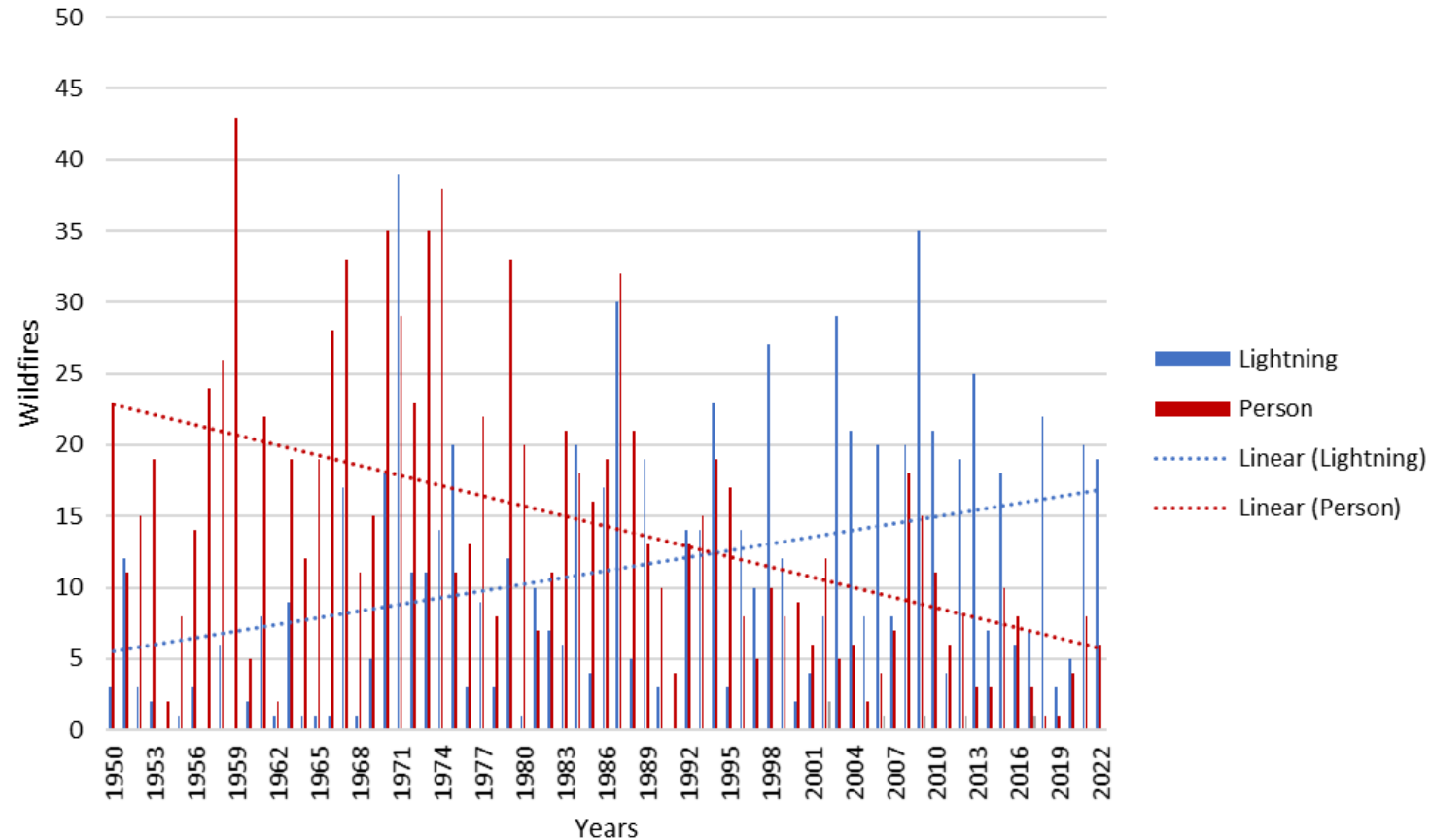
Climate Variable	Season	Projected Change from 1961-1990 Baseline	
		Ensemble Median	Range (10th to 90th percentile)
Temperature (°C)	Annual	+3.2 °C	+2.2 °C to +4.2 °C
Precipitation (%)	Annual	2.60%	-0.53% to +8.8%
	Summer	1.10%	-25% to +7.8%
	Winter	1.80%	-1.5% to +8.0%
Precipitation as Snow (%)	Annual	-28%	-35% to -26%
	Winter	-20%	-25% to -15%
	Spring	-47%	-54% to -41%
Frost-Free Days (days)	Annual	+44 days	+34 to +63 days

# Wildfire Risk Assessment – Fire History



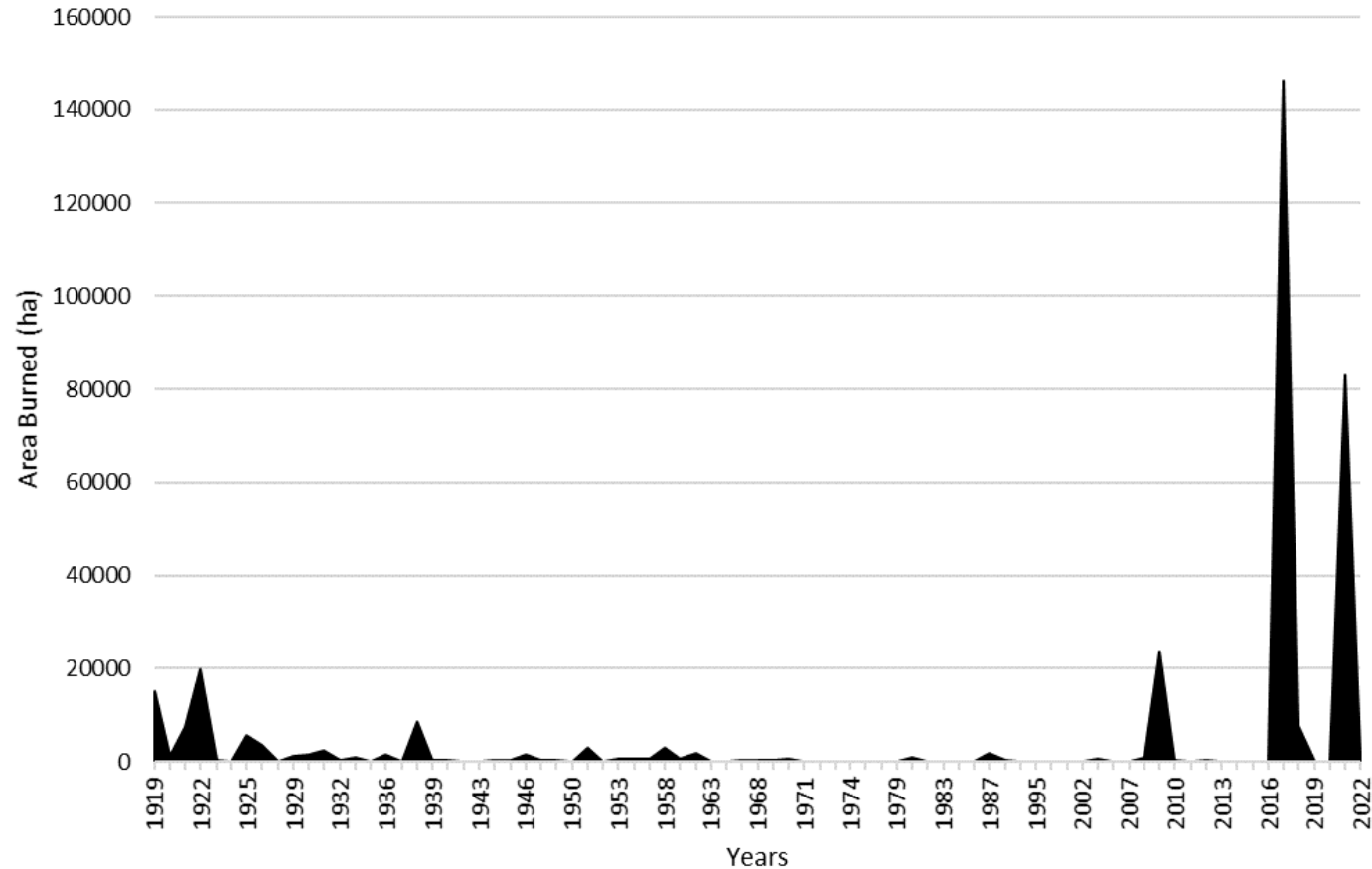


# Wildfire History (1950 -2022)



Annual wildfire occurrence within the Bonaparte Plateau electoral area boundary, from 1950 to 2022.

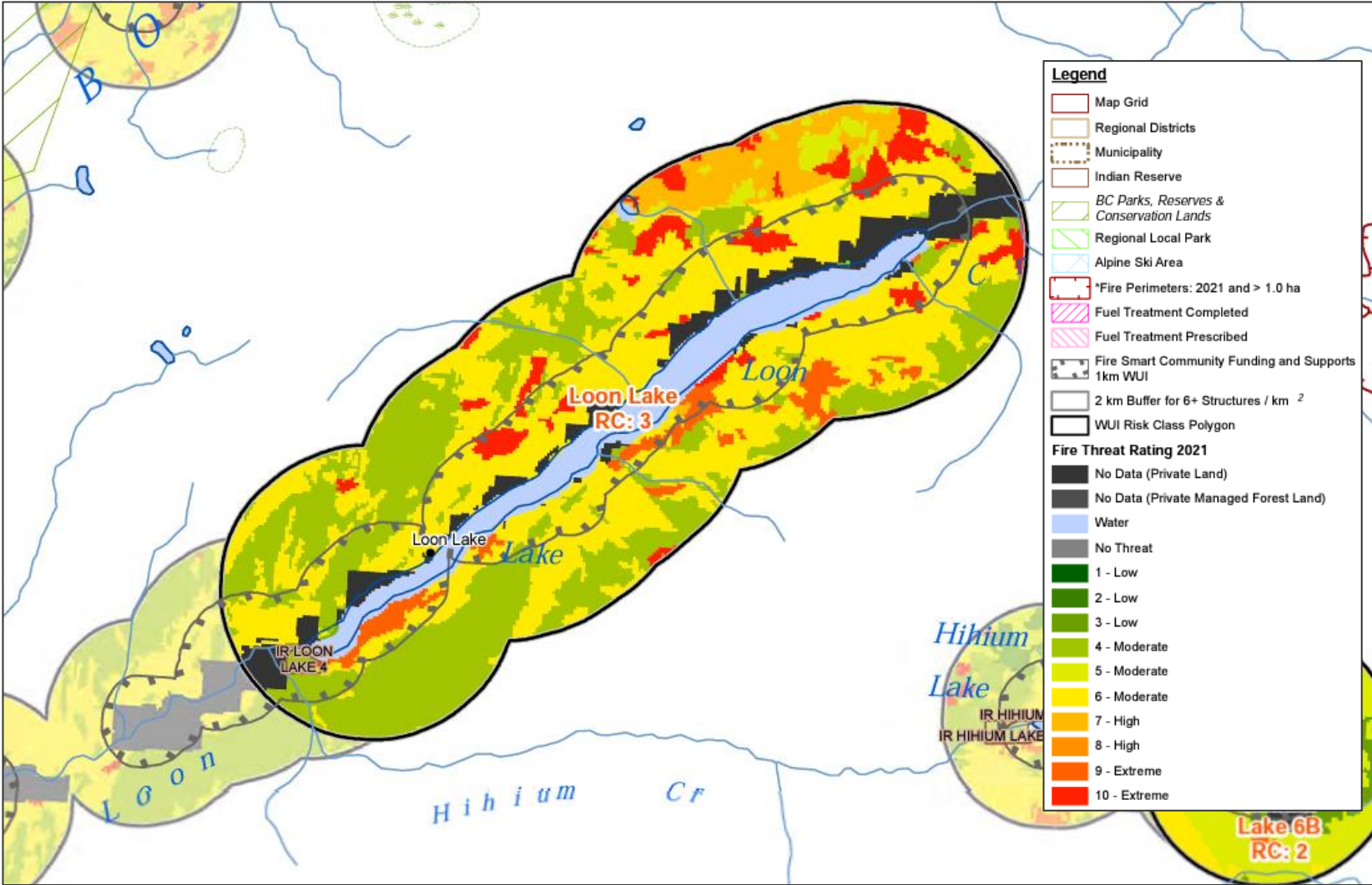
# Area Burned (1919 -2022)



Area burned within the Bonaparte Plateau electoral area boundary, from 1919 to 2022.



# Provincial Strategic Threat Assessment (PSTA)



# Provincial Strategic Threat Assessment (PSTA)

PSTA Threat Rating	Area (ha)	%
No Data (Private Land)	11643.32655	29.7%
Moderate	9416.009692	24.0%
High	8158.892991	20.8%
Water	4868.84266	12.4%
Extreme	4850.889329	12.4%
Low	300.576108	0.8%
Total	39238.53733	100.0%

Within the  
1km Eligible  
WUI

PSTA Threat Rating	Area (ha)	%
High	205709.0225	30.1%
Moderate	202178.673	29.6%
Extreme	201356.1409	29.5%
No Data (Private Land)	38524.29376	5.6%
Low	18185.82038	2.7%
Water	16498.7414	2.4%
No Data (Private Managed Forest Land)	65.25	0.01%
Total	682517.9419	100.0%

Across all of  
Bonaparte  
Plateau  
Country

# Seven FireSmart Disciplines

---

## TOGETHER WE ARE PREPARED





# Seven FireSmart Disciplines



# Vegetation Management

---



## Goal:

- Reduce intensity and spread of wildfire
- Two levels:
  - Residential
  - Landscape

# Vegetation Management





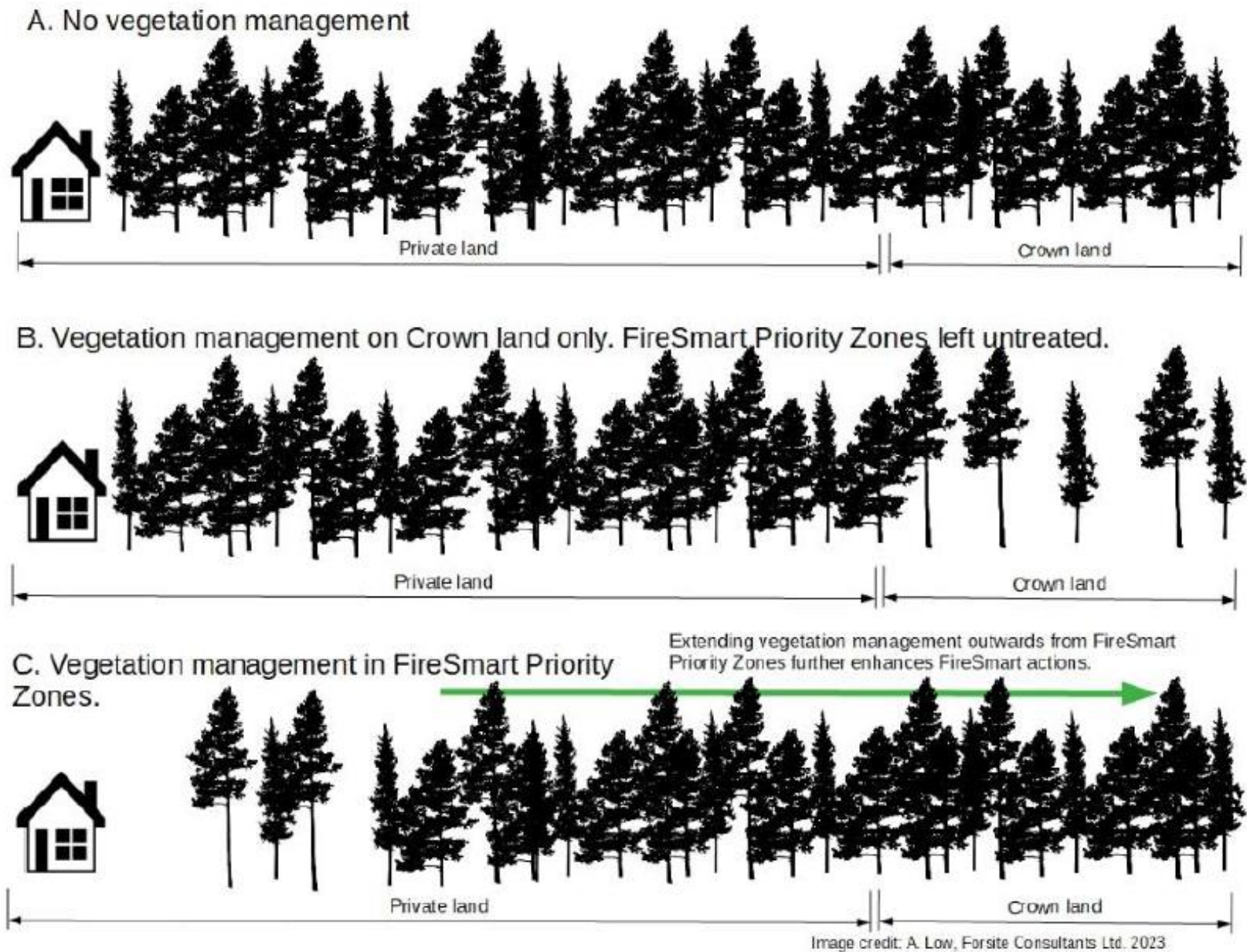


Figure 21 Vegetation management actions are most effective when they prioritize fuel hazard mitigation beginning in the FireSmart priority zones and progressing outwards.

# Action Plan & Recommendations

---

- List of Action Items
  - Primarily focused on CRI funding
- Proposed Fuels Treatments (in progress)





Photo credit: Liam Grant

# Questions?

---



**Andy Low, RPF**

Senior Wildland Fire Specialist  
Kamloops, BC

**cell** 778-220-7834



**Hailey Sigalet, RPF**

Fuel Management Specialist  
Kamloops, BC

**cell** 778-678-4636