



Community Wildfire Resiliency Plan

Thompson-Nicola Regional District Electoral Area "I" (Blue Sky County)

Outline

- ① **Community Wildfire Resiliency Plan**
- ② **Community Description**
- ③ **Wildfire Risk Assessment**
- ④ **Seven FireSmart Disciplines**
- ⑤ **Action Plan & Recommendations**
- ⑥ **Questions**



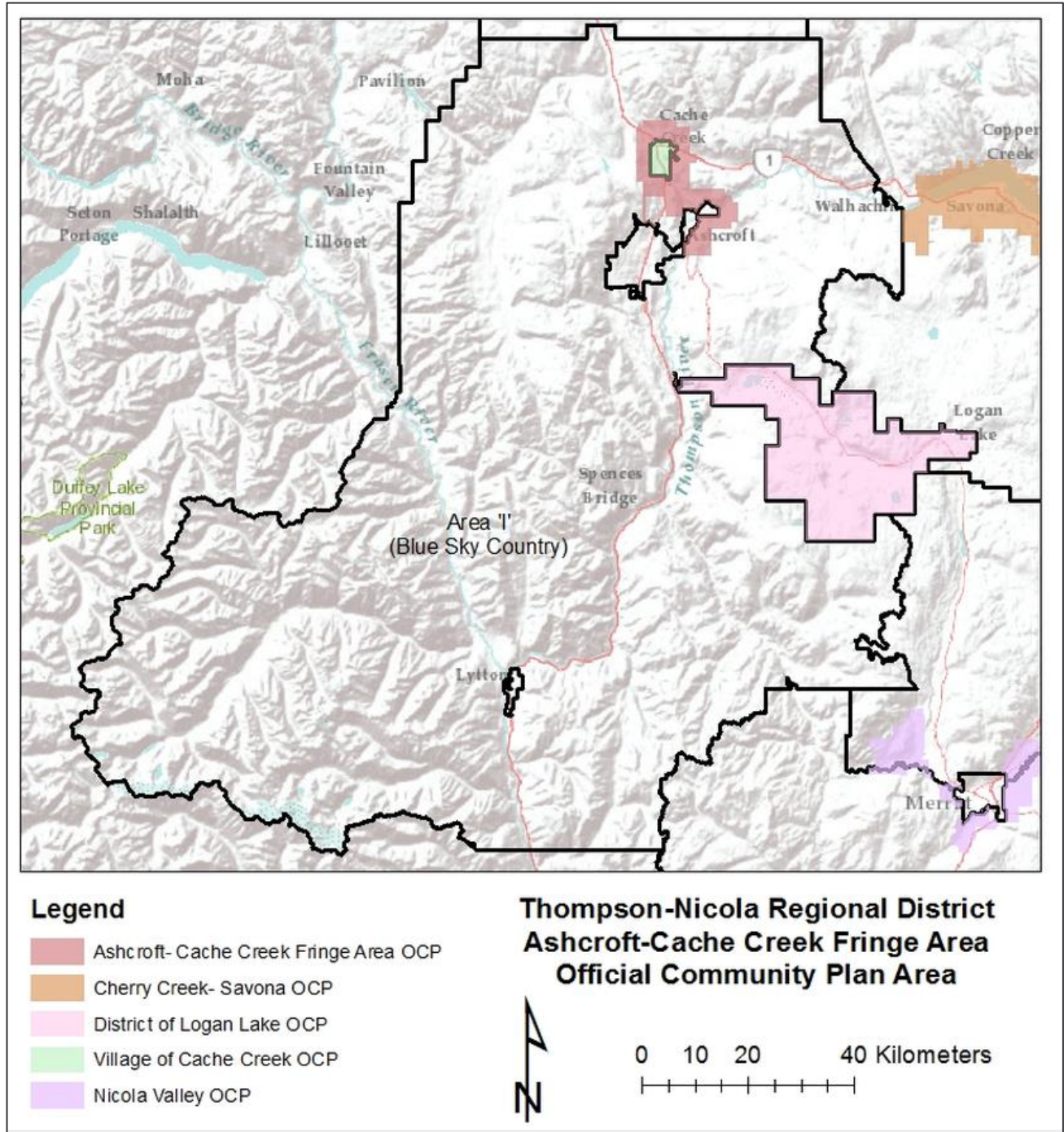
Community Wildfire Resiliency Plan

- High level plan
- Improve a community's wildfire preparedness
- Mitigate losses from possible wildfire
- Seven FireSmart principles
- Unlocks government funding sources

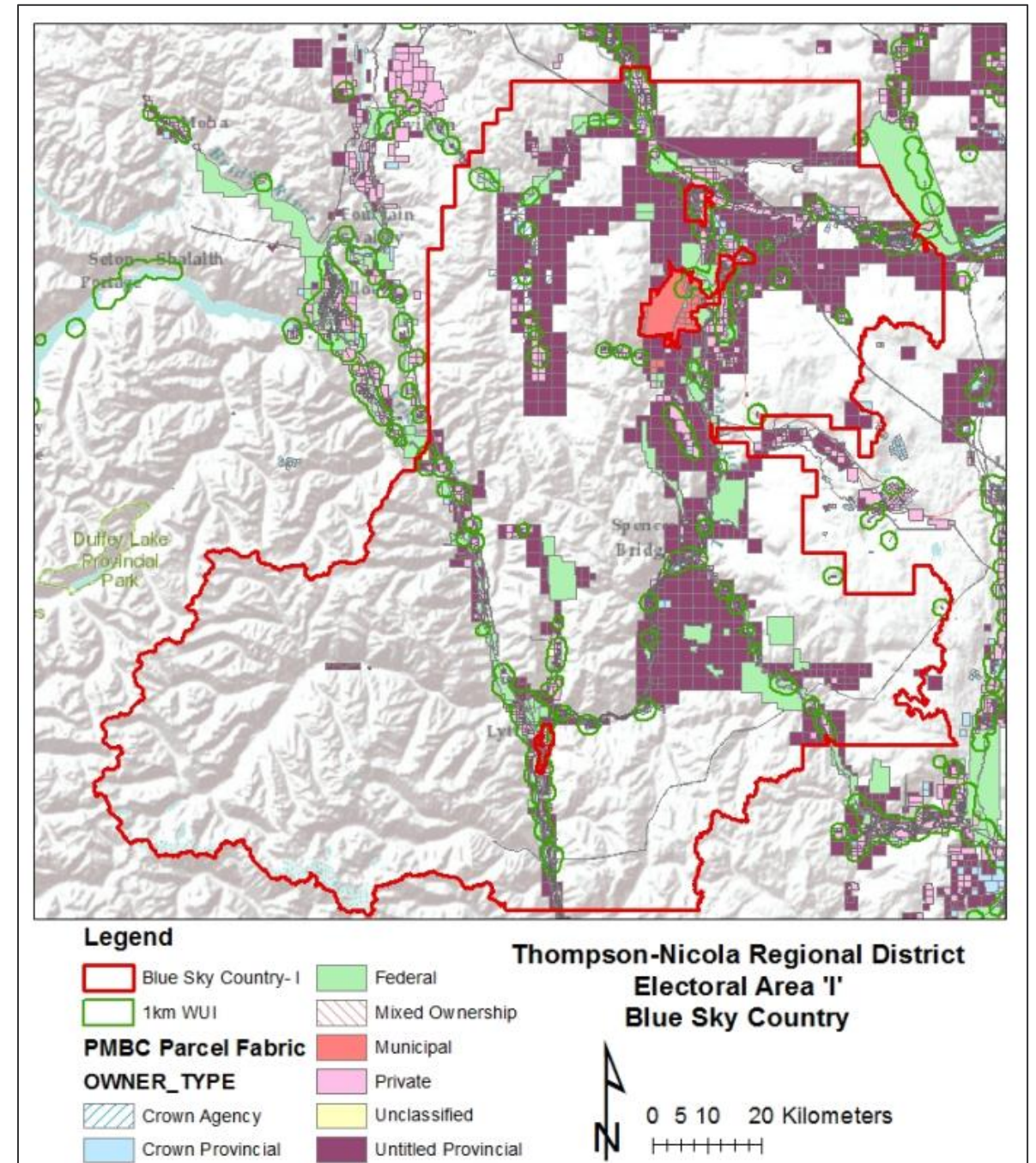


Photo credit: Madison Hughes

Community Description



Area of Interest



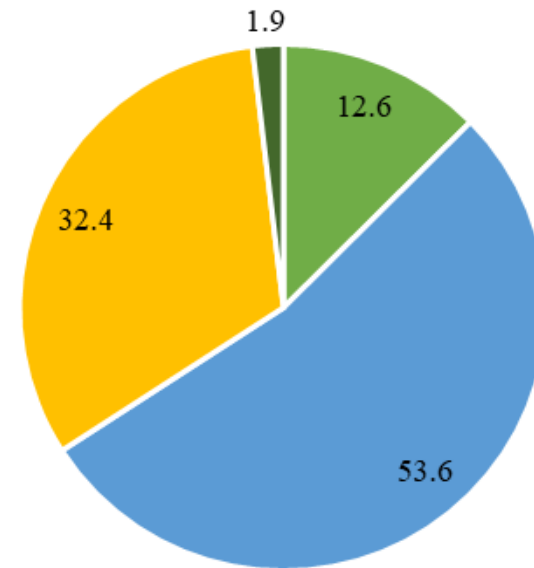
Community Description - Demographics

Total Population: 1,038 (2021)

Population Growth: -17.7% since 2016

- 0 to 14 years
- 15 to 64 years
- 65 to 84 years
- 85 years and over

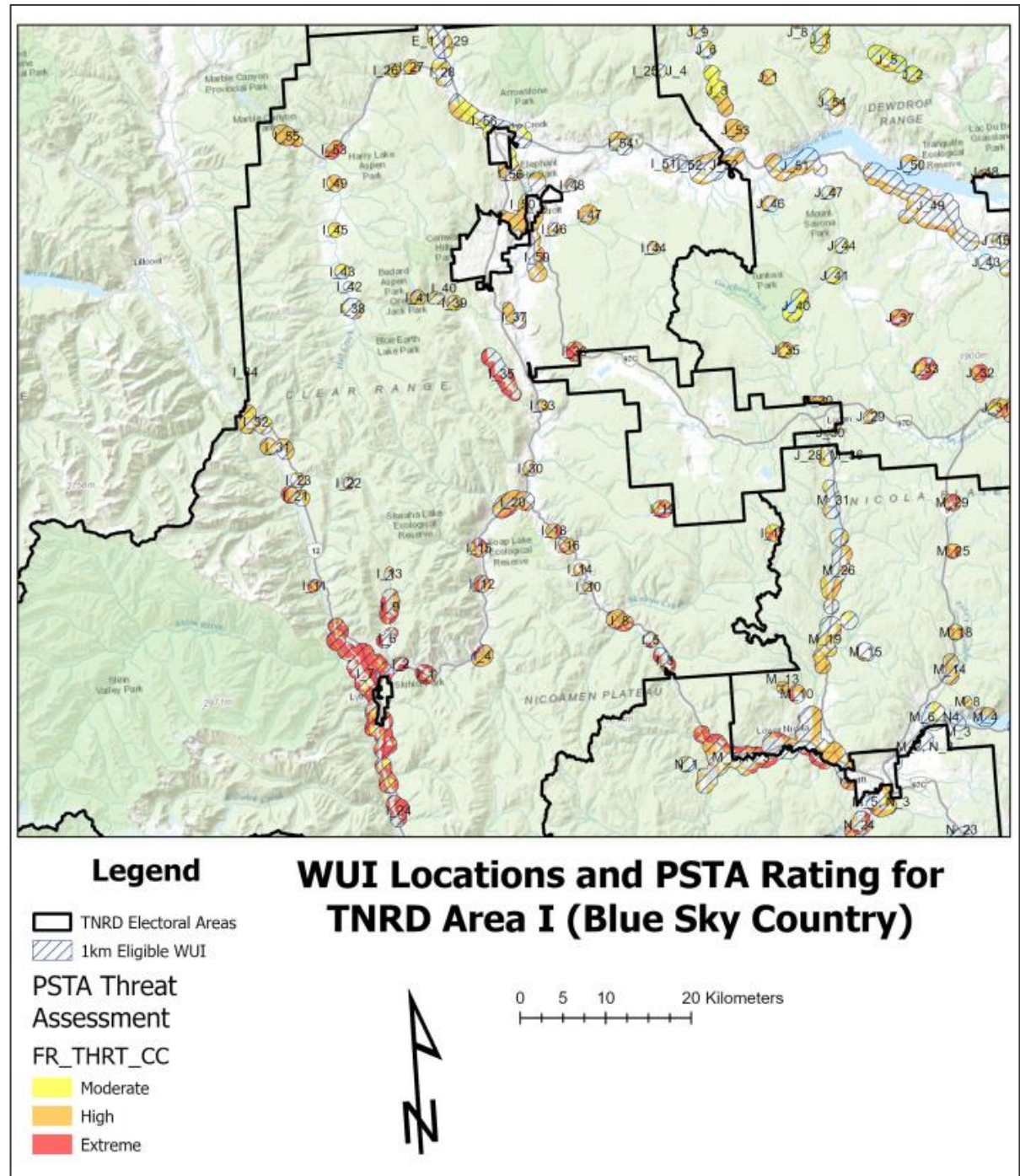
Big Sky Country



Community Description - Land Ownership

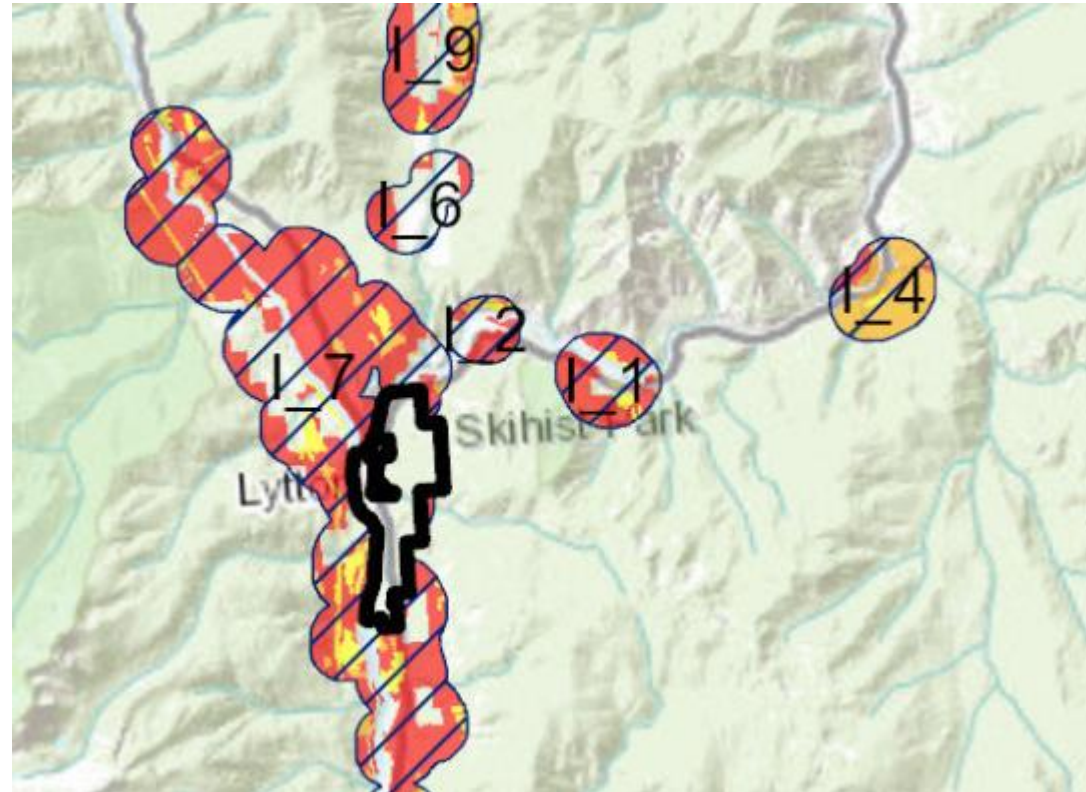
Owner Type	Area (ha) Total	%	Area (ha) in WUI	%
Untitled Provincial	98728.23	68.7%	9273.57	35.3%
Federal	20194.46	14.0%	5566.45	21.2%
Private	19041.45	13.2%	9942.05	37.8%
Crown Provincial	3578.02	2.5%	940.24	3.6%
Crown Agency	1630.64	1.1%	292.53	1.1%
Municipal	342.61	0.2%	88.65	0.3%
Unclassified	222.21	0.2%	198.56	0.8%
Mixed Ownership	61.76	0.04%	0.0	0.0%
Total	143799.38	100.0%	26302.05	100.0%

Wildfire Risk Assessment

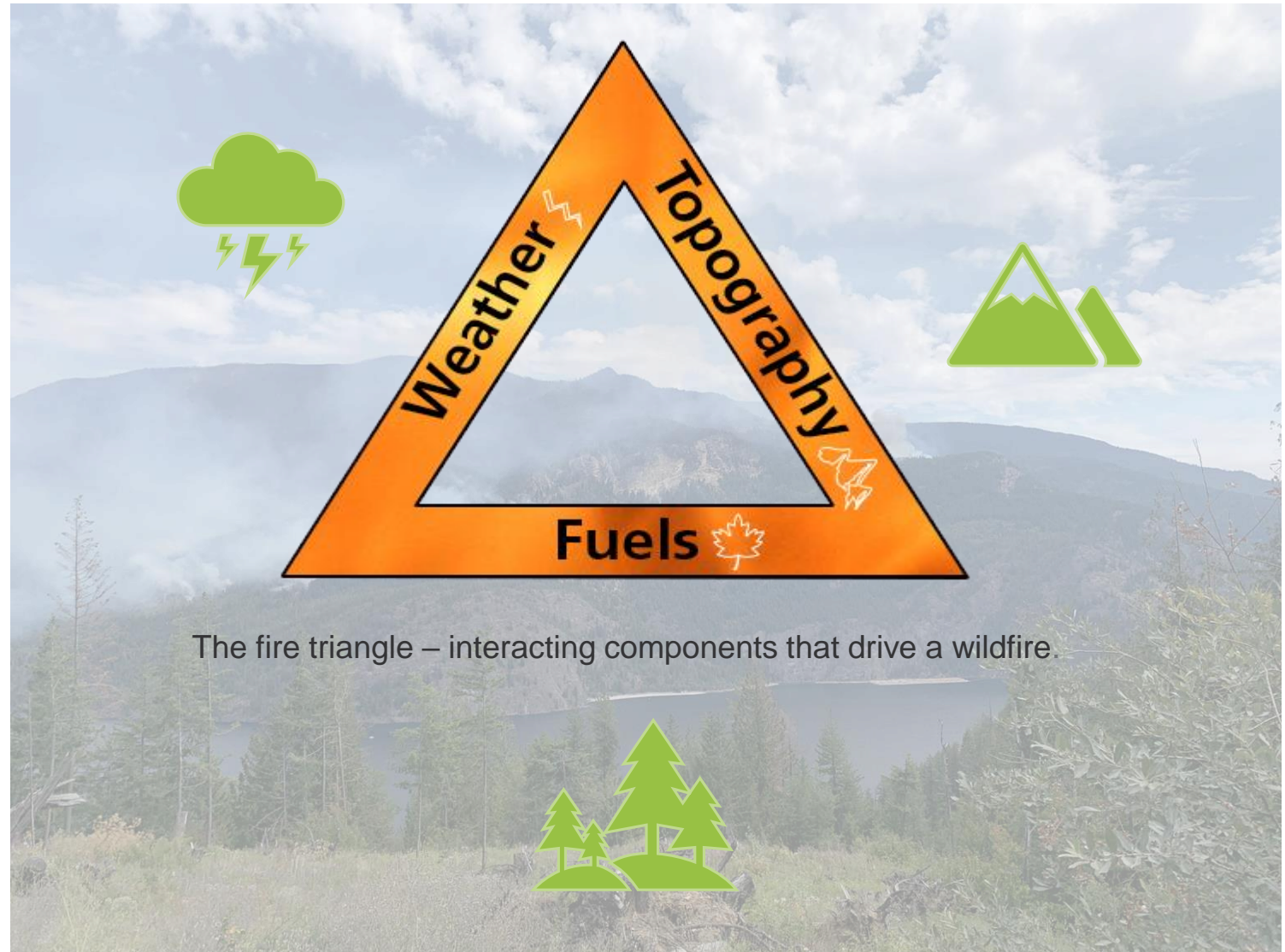


Wildfire Risk Assessment – “1km Eligible WUI”

WUI: *Wildland
Urban Interface*



Wildfire Risk Assessment – The Fire Environment

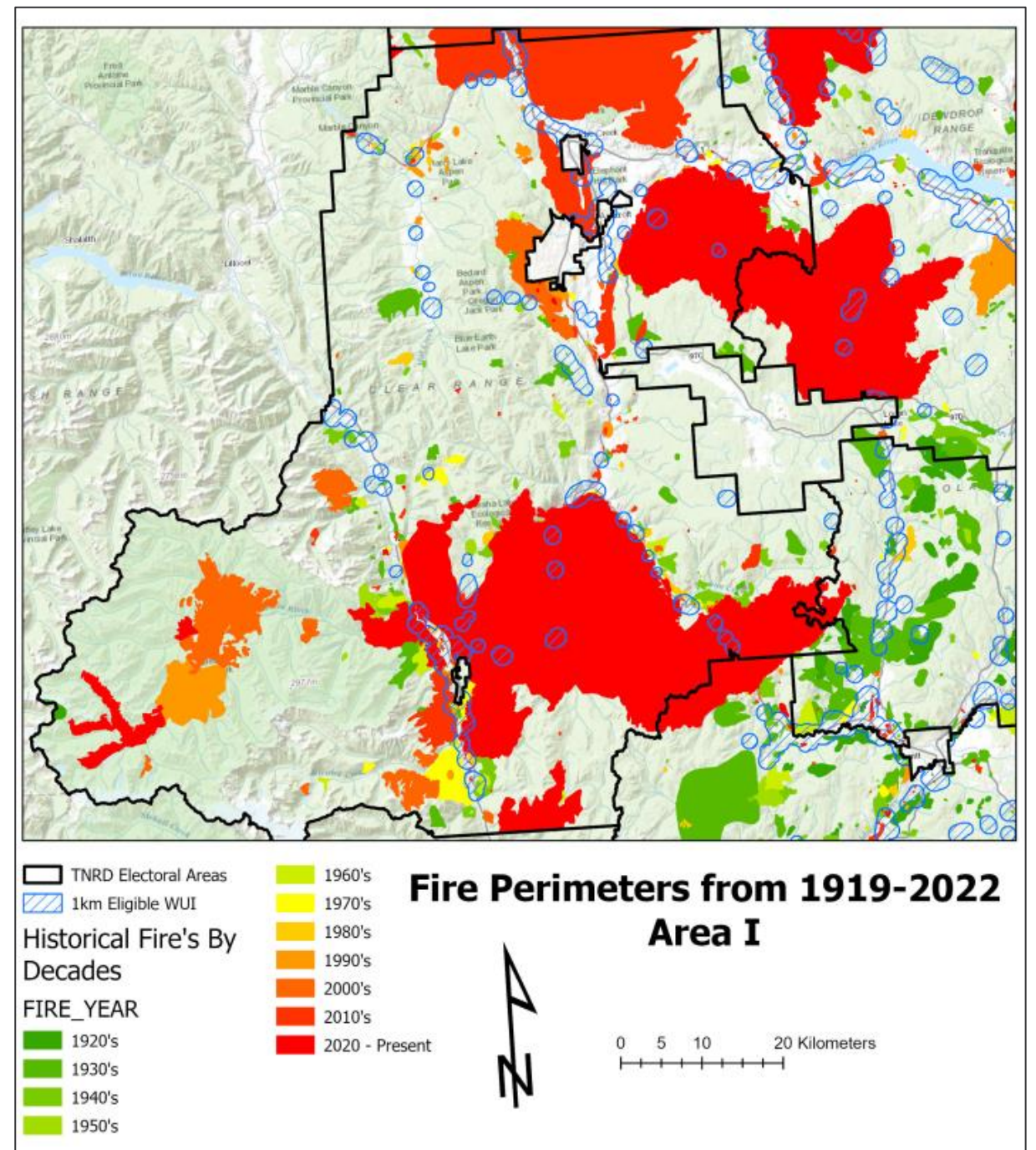


The fire triangle – interacting components that drive a wildfire.

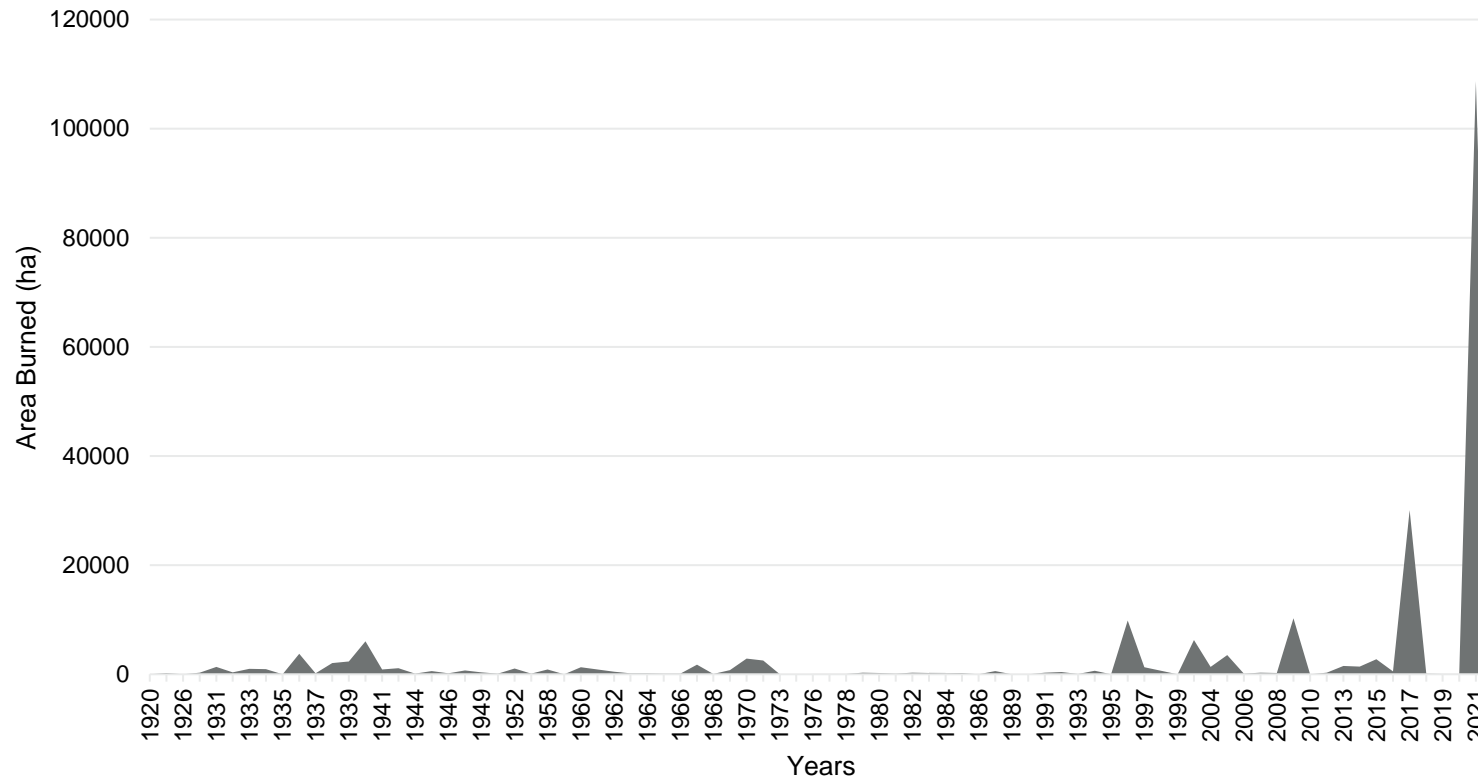
Climate Variable	Season	Projected Change from 1961-1990 Baseline	
		Ensemble Median	Range (10th to 90th percentile)
Temperature (°C)	Annual	+3.2 °C	+2.2 °C to +4.2 °C
Precipitation (%)	Annual	2.60%	-0.53% to +8.8%
	Summer	1.10%	-25% to +7.8%
	Winter	1.80%	-1.5% to +8.0%
Precipitation as Snow (%)	Annual	-28%	-35% to -26%
	Winter	-20%	-25% to -15%
	Spring	-47%	-54% to -41%
Frost-Free Days (days)	Annual	+44 days	+34 to +63 days

Summary of projected climate changes in the TNRD, based on baseline data from 1961-1990, projecting through to 2050

Wildfire Risk Assessment – Fire History

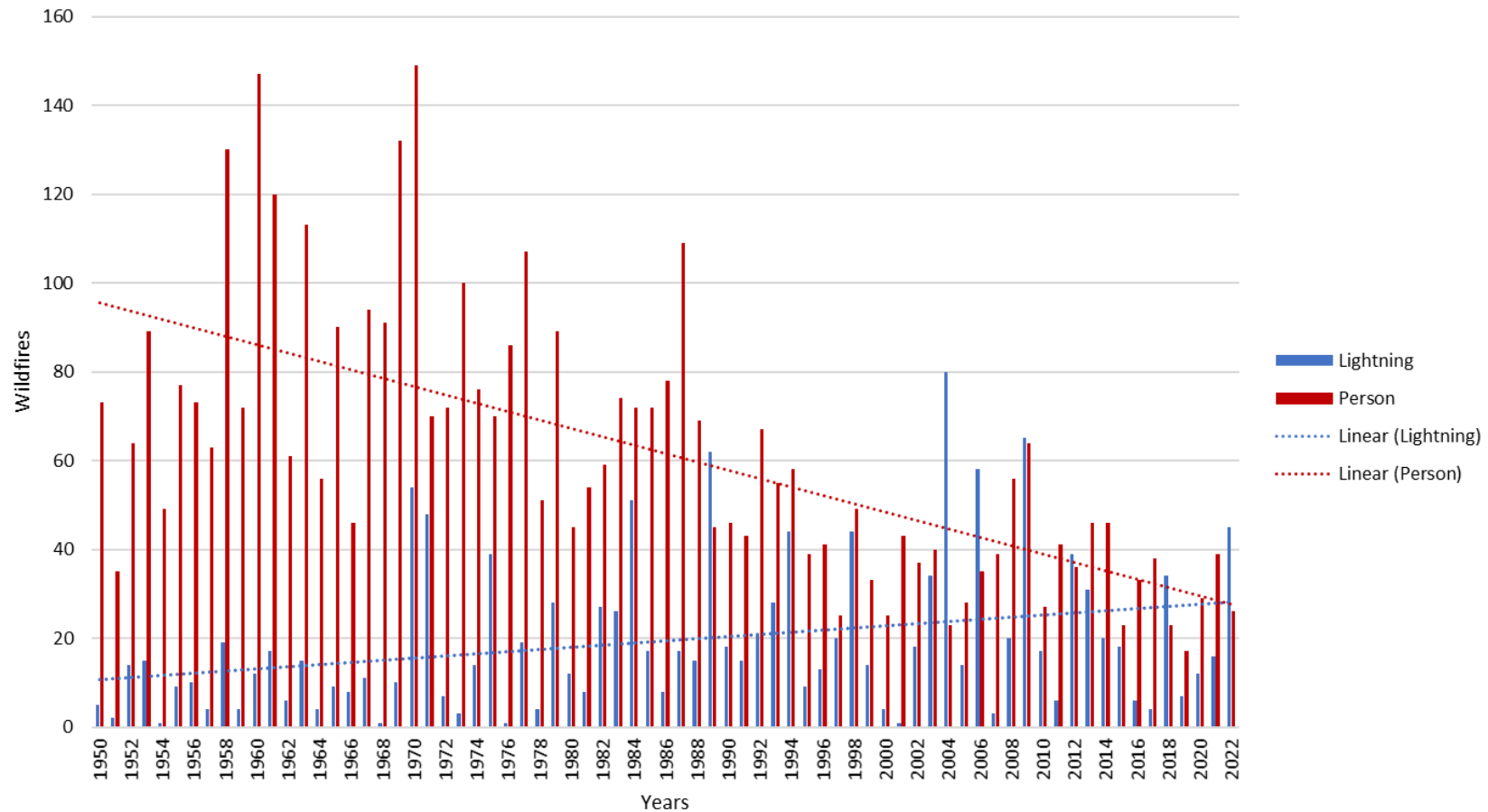


Area Burned (1919 -2022)



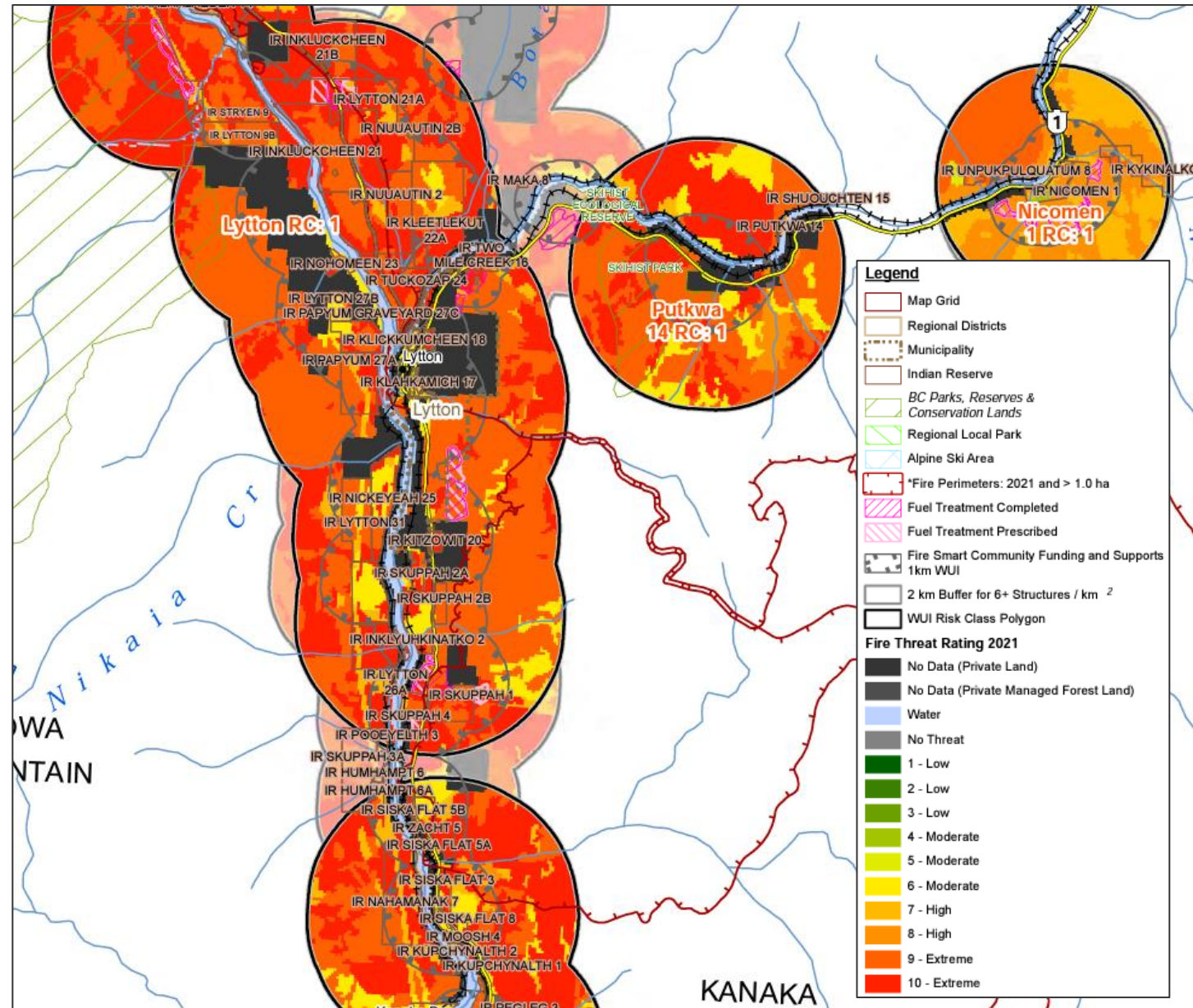
Area burned within the Blue Sky electoral area boundary, from 1919 to 2022.

Wildfire History (1950 -2022)



Annual wildfire occurrence within the Blue Sky Country electoral area boundary, from 1950 to 2022.

Provincial Strategic Threat Assessment (PSTA)



Provincial Strategic Threat Assessment (PSTA)

PSTA Threat Rating	Area (ha)	%
High	10209.55515	32.1%
No Data (Private Land)	10168.72348	32.0%
Extreme	6988.741574	22.0%
Moderate	2869.181583	9.0%
Water	1537.793881	4.8%
Low	0.270128	0.001%
Total	31774.2658	100%

PSTA Threat Rating	Area (ha)	%
High	217742.4656	36.7%
Extreme	196497.4167	33.1%
Moderate	80558.49818	13.6%
Low	72923.23959	12.3%
No Data (Private Land)	19370.78117	3.3%
Water	5573.442926	0.9%
No Data (Private Managed Forest Land)	134.25	0.02%
Total	592800.0941	100.0%

Within the 1km Eligible WUI.

Across all of Blue Sky country area.

Seven FireSmart Disciplines

TOGETHER WE ARE PREPARED



Seven FireSmart Disciplines



Vegetation Management



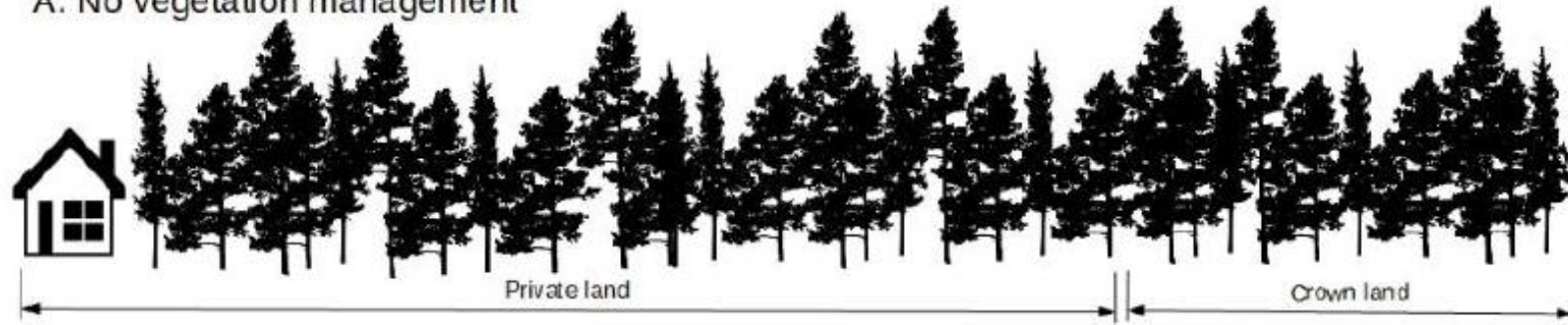
Goal:

- Reduce intensity and spread of wildfire
- Two levels:
 - Residential
 - Landscape

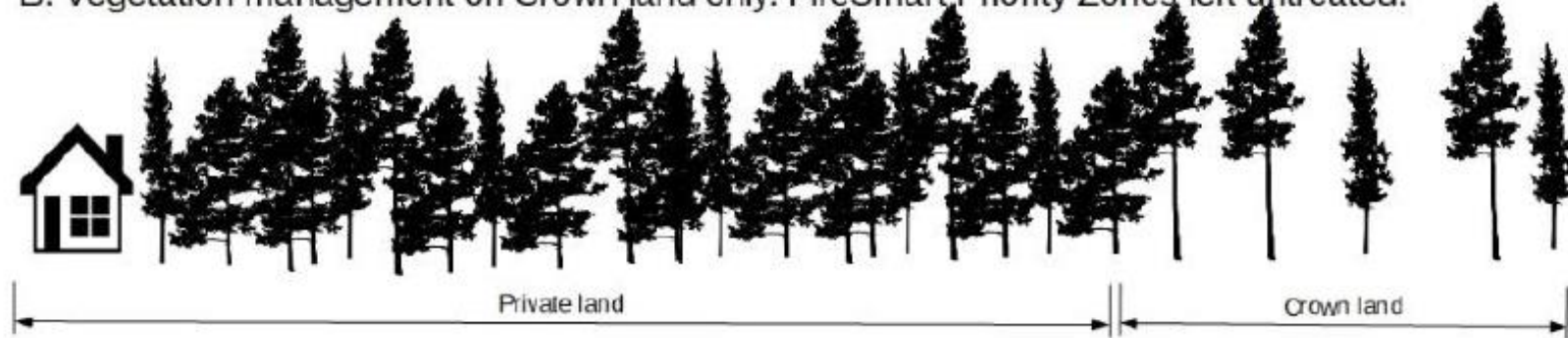
Vegetation Management



A. No vegetation management



B. Vegetation management on Crown land only. FireSmart Priority Zones left untreated.



C. Vegetation management in FireSmart Priority Zones.

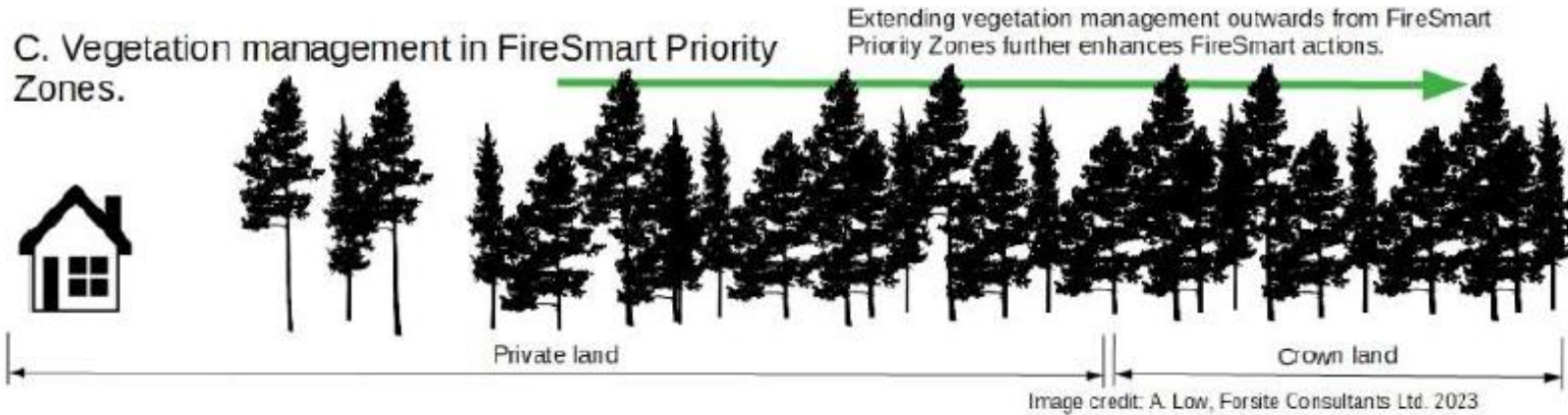


Figure 21 Vegetation management actions are most effective when they prioritize fuel hazard mitigation beginning in the FireSmart priority zones and progressing outwards.

Action Plan & Recommendations

- List of Action Items
 - Primarily focused on CRI funding
- Proposed Fuels Treatments (in progress)





Questions?



Andy Low, RPF

Senior Wildland Fire Specialist
Kamloops, BC

cell 778-220-7834



Hailey Sigalet, RPF

Fuel Management Specialist
Kamloops, BC

cell 778-678-4636