



# Community Wildfire Resiliency Plan

---

**Thompson-Nicola Regional District Electoral Area “J” (Copper Desert Country)**

# Outline

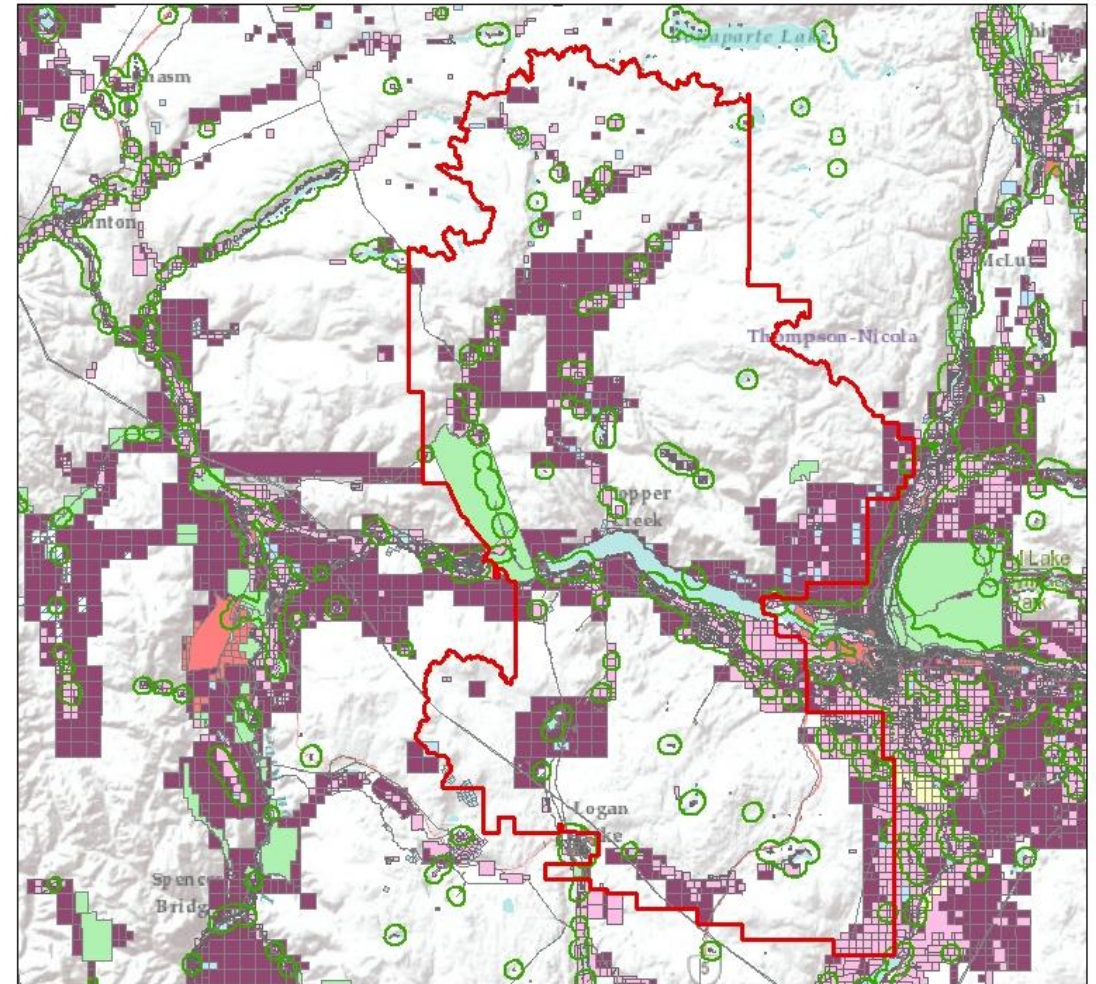
---

- ① **Community Wildfire Resiliency Plan**
- ② **Community Description**
- ③ **Wildfire Risk Assessment**
- ④ **Seven FireSmart Disciplines**
- ⑤ **Action Plan & Recommendations**
- ⑥ **Questions**





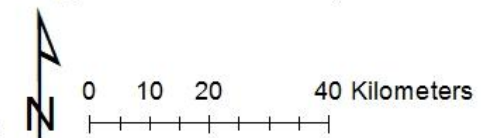
# Area of Interest



## Legend

- |                           |                     |
|---------------------------|---------------------|
| Copper Desert Country- J  | Federal             |
| 1km WUI                   | Mixed Ownership     |
| <b>PMBC Parcel Fabric</b> | Municipal           |
| <b>OWNER_TYPE</b>         | Private             |
| Crown Agency              | Unclassified        |
| Crown Provincial          | Untitled Provincial |

## Thompson-Nicola Regional District Electoral Area 'J' Copper Desert Country



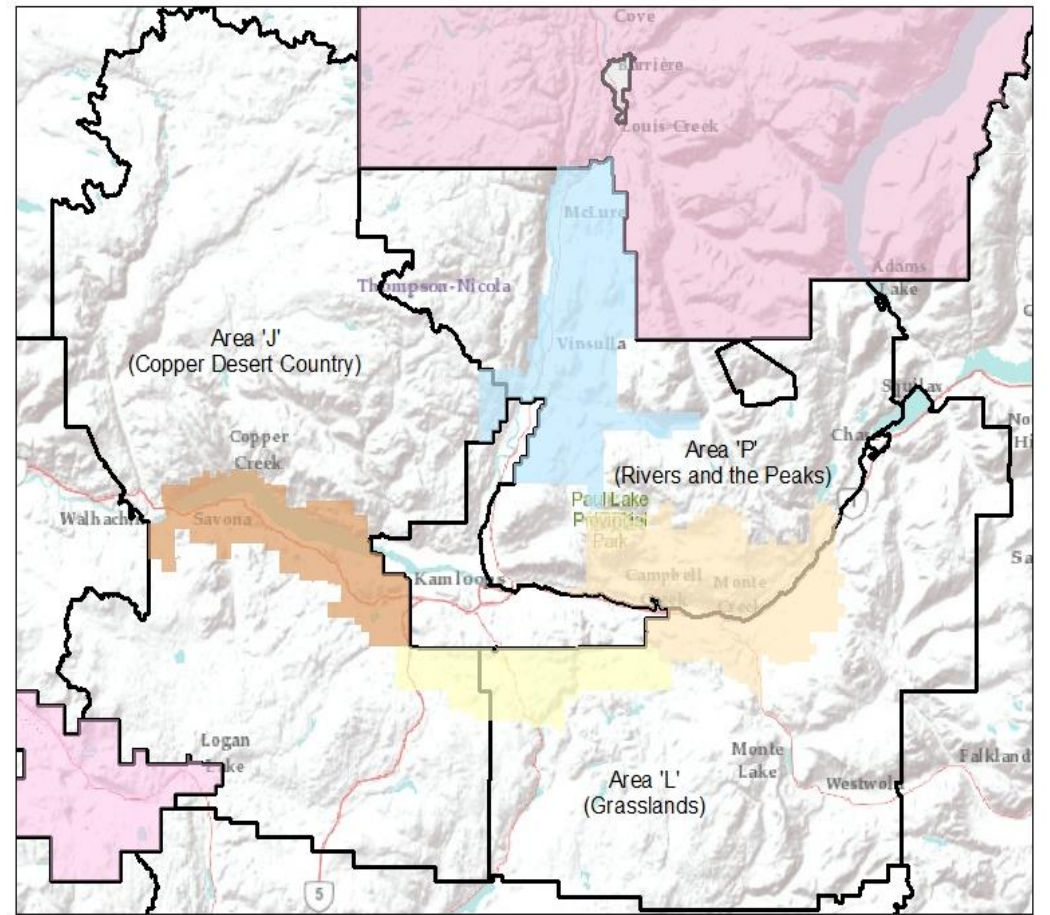
# Community Wildfire Resiliency Plan

---

- High level plan
- Improve a community's wildfire preparedness
- Mitigate losses from possible wildfire
- Seven FireSmart principles
- Unlocks government funding sources



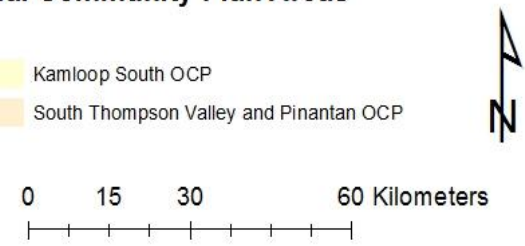
# Community Description



**Thompson-Nicola Regional District  
Cherry Creek- Savona, Kamloops North, Kamloops South,  
and South Thompson Valley and Pinantan  
Official Community Plan Areas**

**Legend**

- North Thompson OCP
- District of Logan Lake OCP
- Kamloops North OCP
- Cherry Creek- Savona OCP
- Kamloops South OCP
- South Thompson Valley and Pinantan OCP





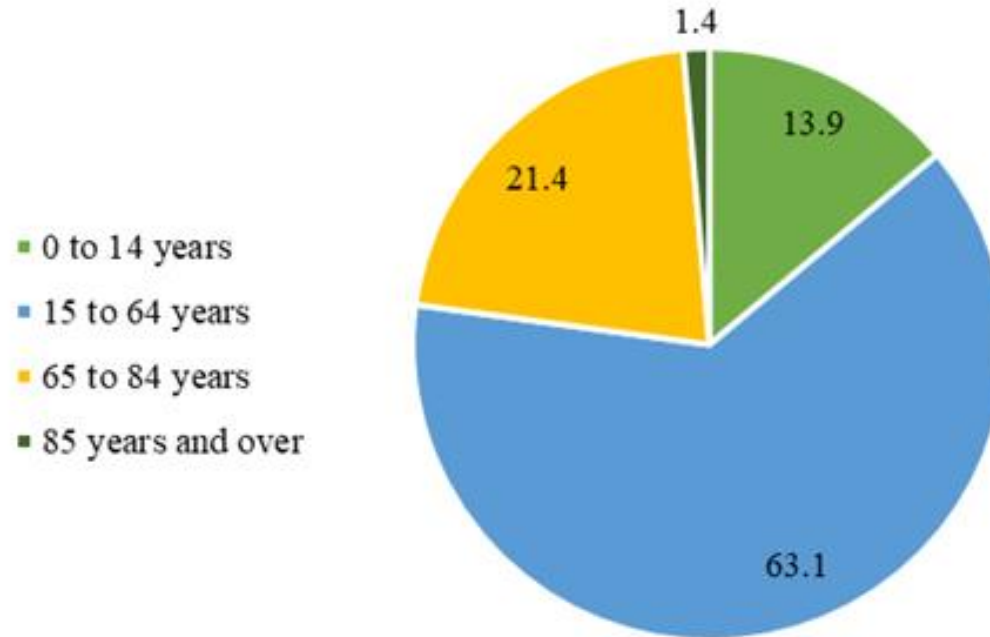
# Community Description - Demographics

---

Total Population: 1,796 (2021)

Population Growth: 13.7% since 2016

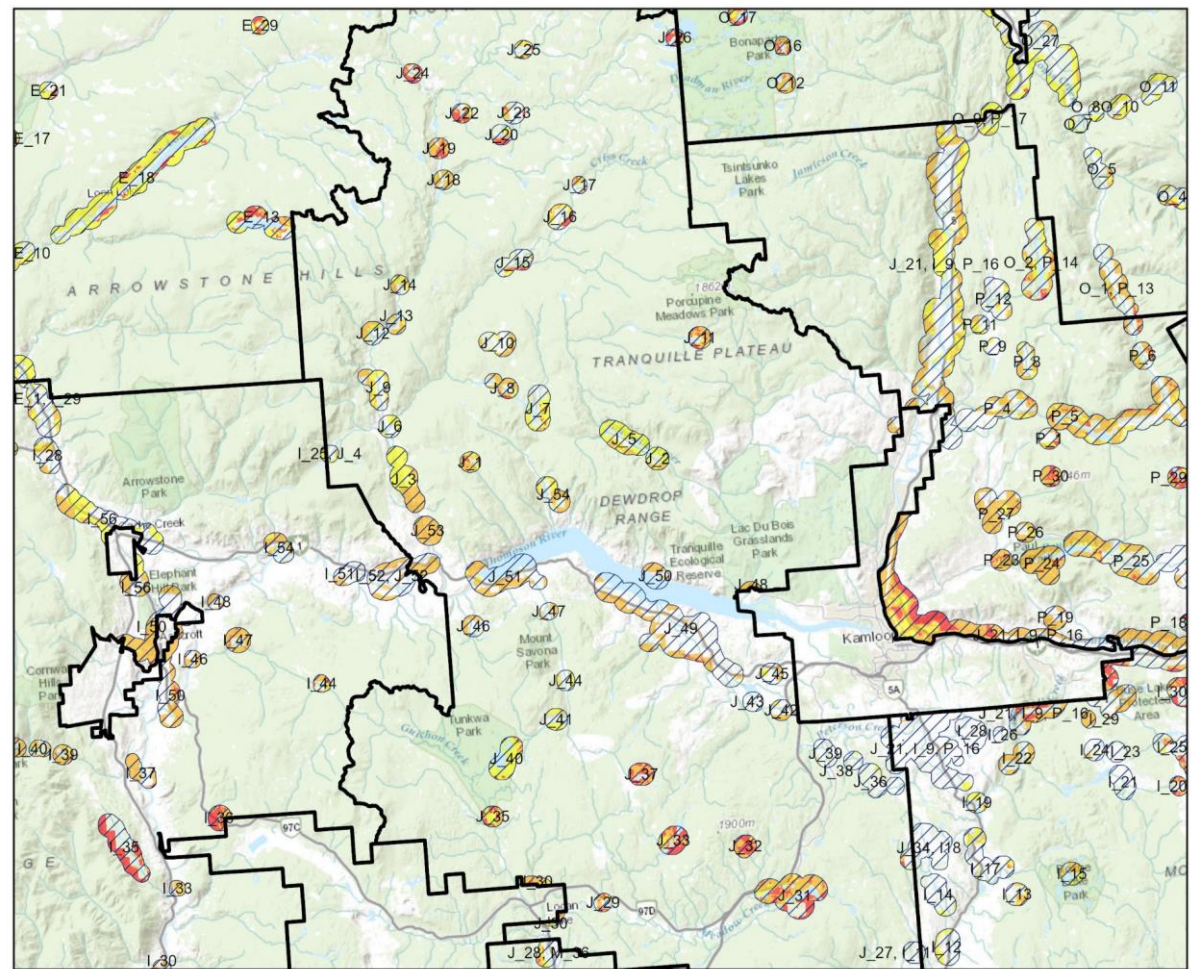
Copper Desert Country



# Community Description - Land Ownership

<b>Owner Type</b>	<b>Area (ha) Total</b>	<b>%</b>	<b>Area (ha) in WUI</b>	<b>%</b>
Untitled Provincial	57645.57	57.1%	4981.26	25.6%
Private	30474.33	30.2%	11779.52	60.4%
Federal	8177.06	8.1%	1906.21	9.8%
Crown Provincial	4194.78	4.2%	638.06	3.3%
Unclassified	257.42	0.3%	102.25	0.5%
Crown Agency	68.83	0.1%	66.9	0.3%
Mixed Ownership	44.64	0.04%	0.0	0.0%
Municipal	23.63	0.02%	12.25	0.1%
<b>Total</b>	<b>100886.26</b>	<b>100.0%</b>	<b>19486.45</b>	<b>100.0%</b>

# Wildfire Risk Assessment



## Legend

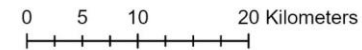
- TNRD Electoral Areas
- 1km Eligible WUI

PSTA Threat Assessment

FR\_THRT\_CC

- Moderate
- High
- Extreme

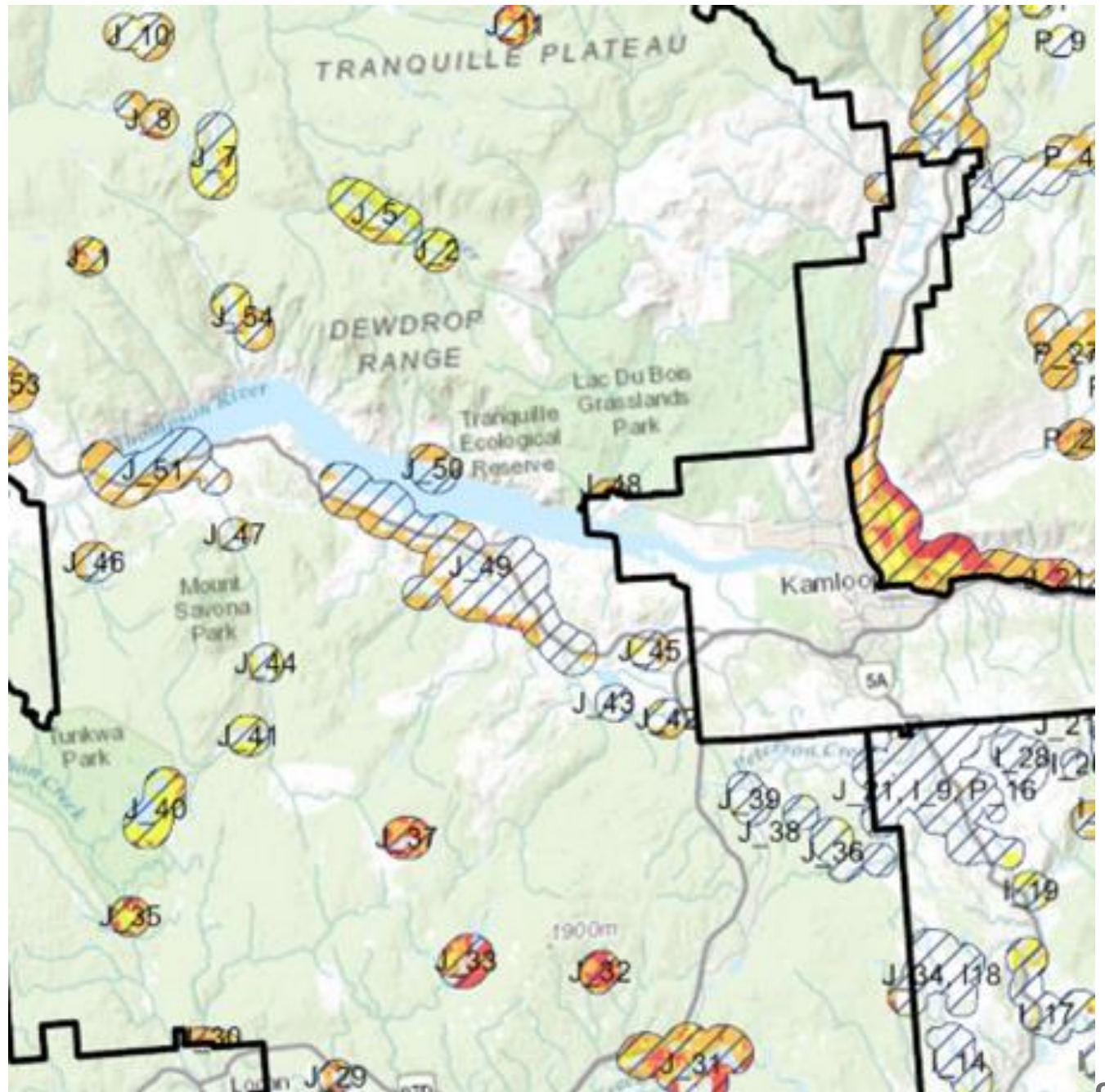
## WUI Locations and PSTA Rating for TNRD Area J (Copper Desert Country)





# Wildfire Risk Assessment – “1km Eligible WUI”

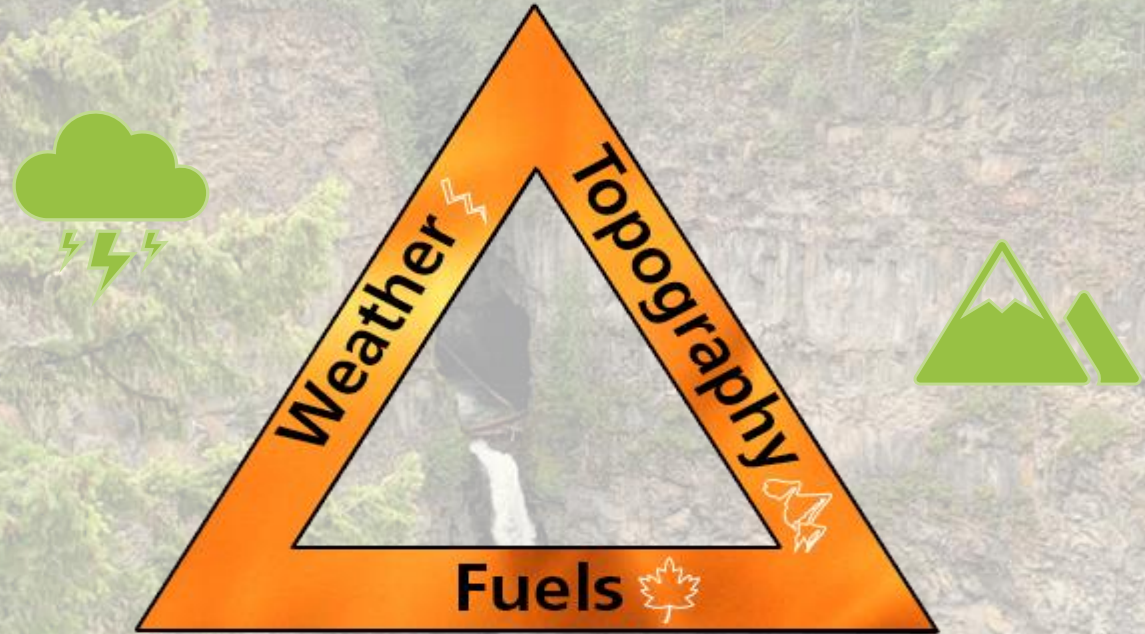
WUI: *Wildland  
Urban Interface*





# Wildfire Risk Assessment – The Fire Environment

---

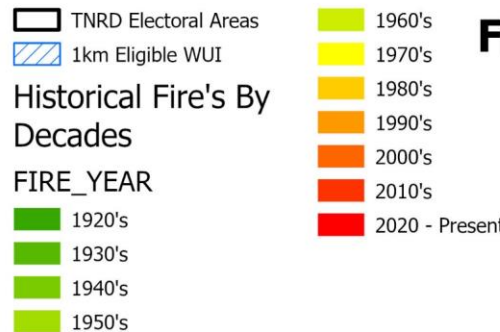
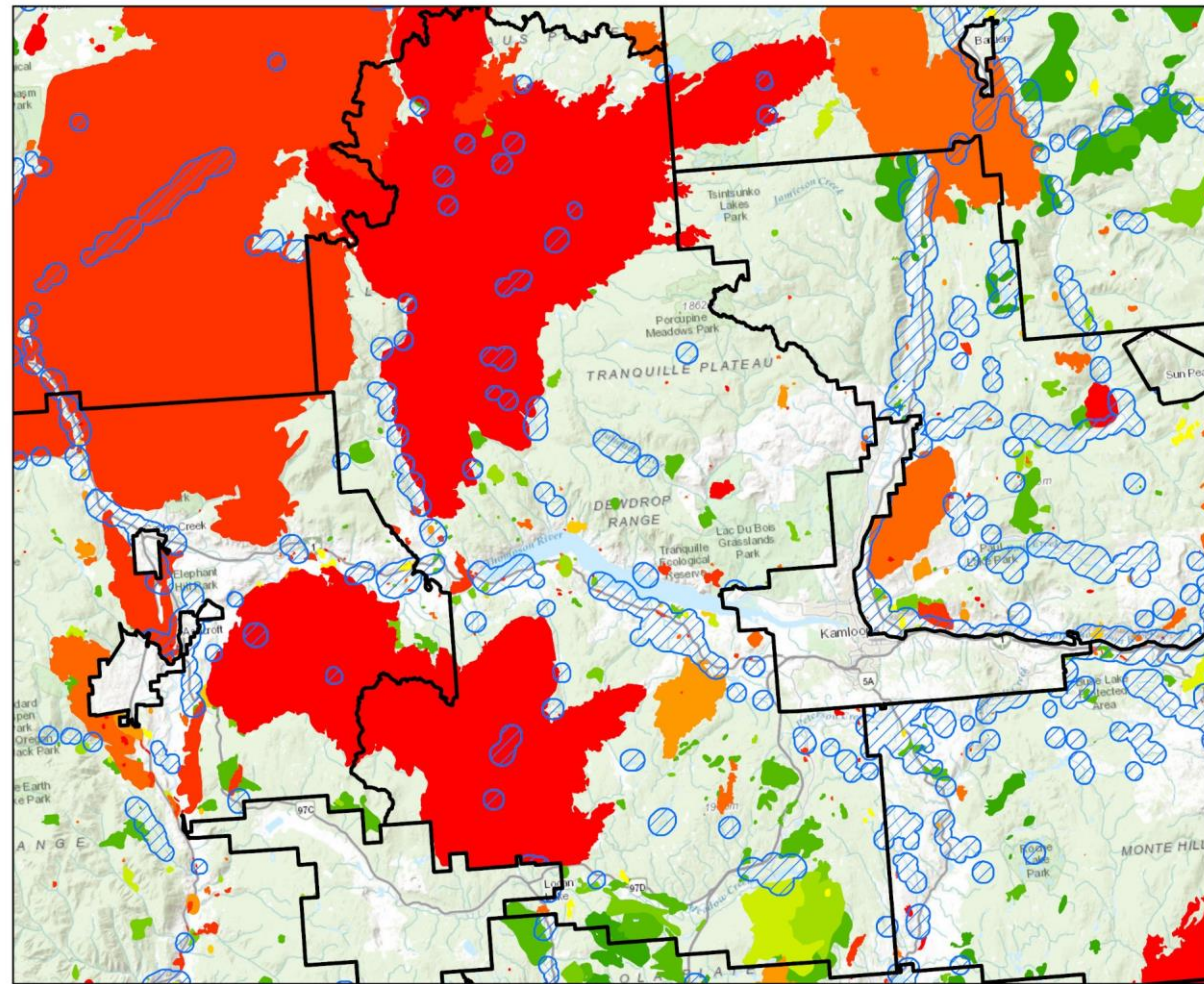


The fire triangle – interacting components that drive a wildfire.

Climate Variable	Season	Projected Change from 1961-1990 Baseline	
		Ensemble Median	Range (10th to 90th percentile)
Temperature (°C)	Annual	+3.2 °C	+2.2 °C to +4.2 °C
Precipitation (%)	Annual	2.60%	-0.53% to +8.8%
	Summer	1.10%	-25% to +7.8%
	Winter	1.80%	-1.5% to +8.0%
Precipitation as Snow (%)	Annual	-28%	-35% to -26%
	Winter	-20%	-25% to -15%
	Spring	-47%	-54% to -41%
Frost-Free Days (days)	Annual	+44 days	+34 to +63 days



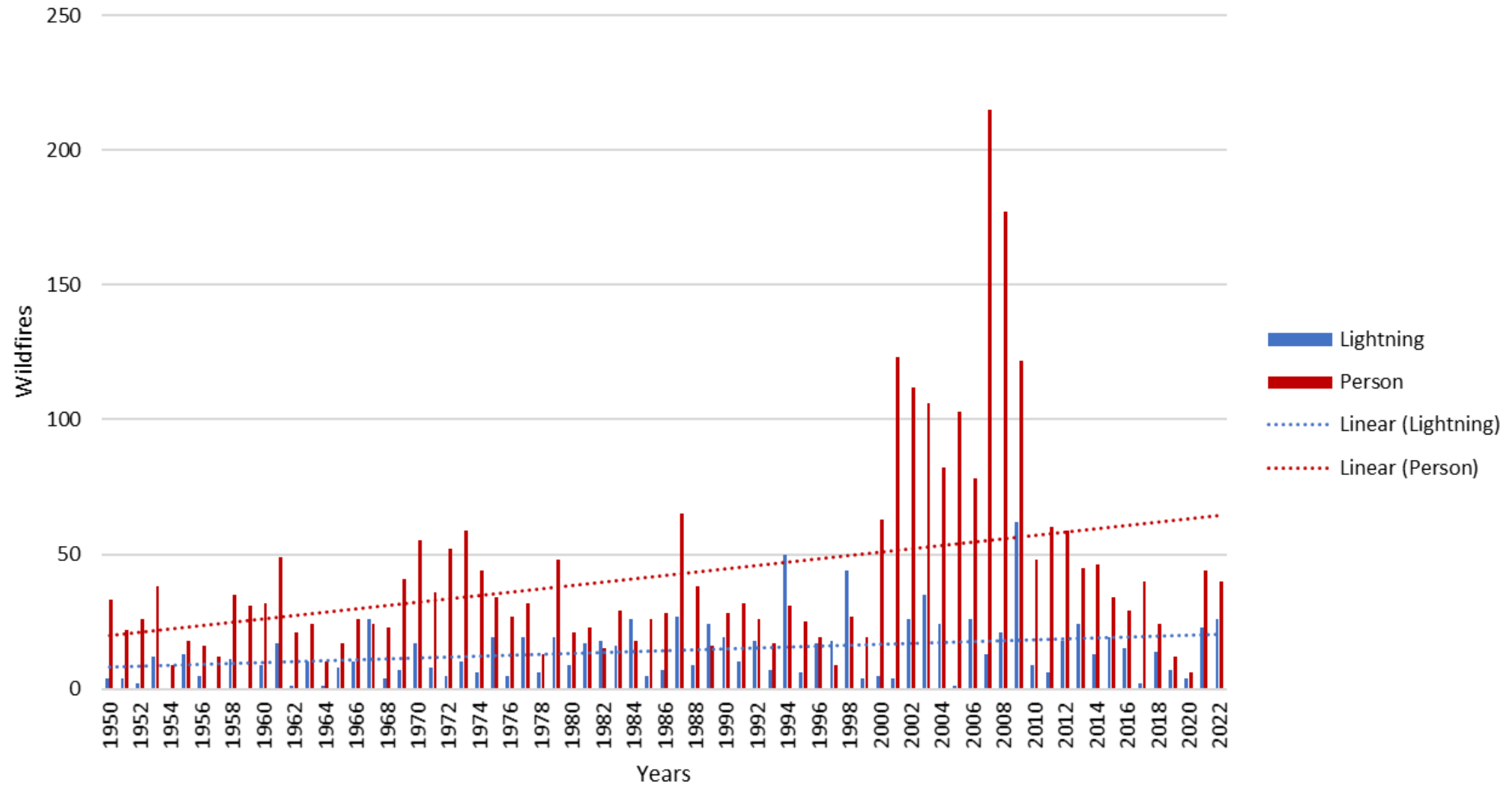
# Wildfire Risk Assessment – Fire History



**Fire Perimeters from 1919-2022  
Area J**

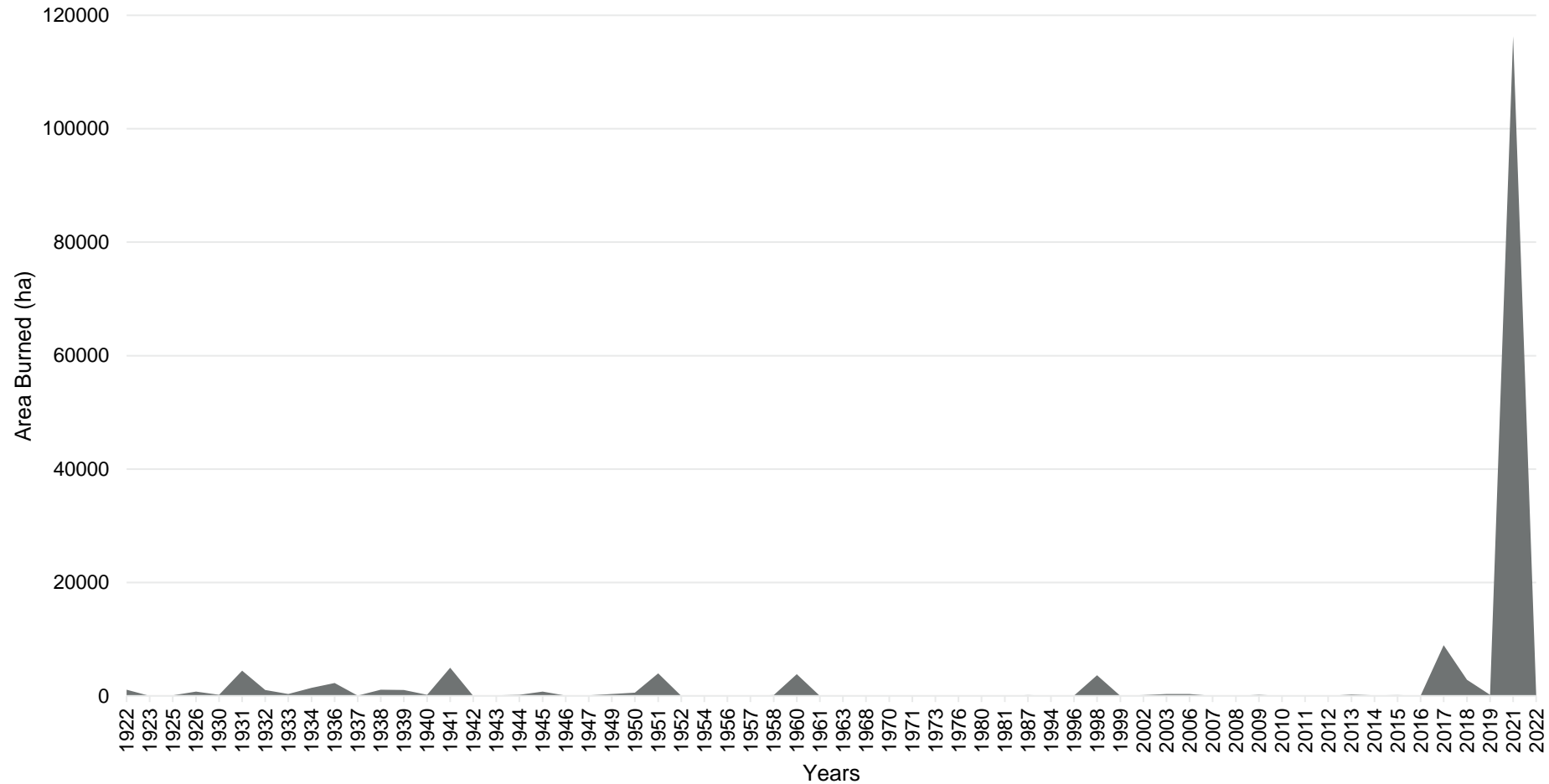


# Wildfire History, 1950 -2022



Annual wildfire occurrence within the Copper Desert Country electoral area boundary, from 1950 to 2022.

# Area Burned, 1919 -2022

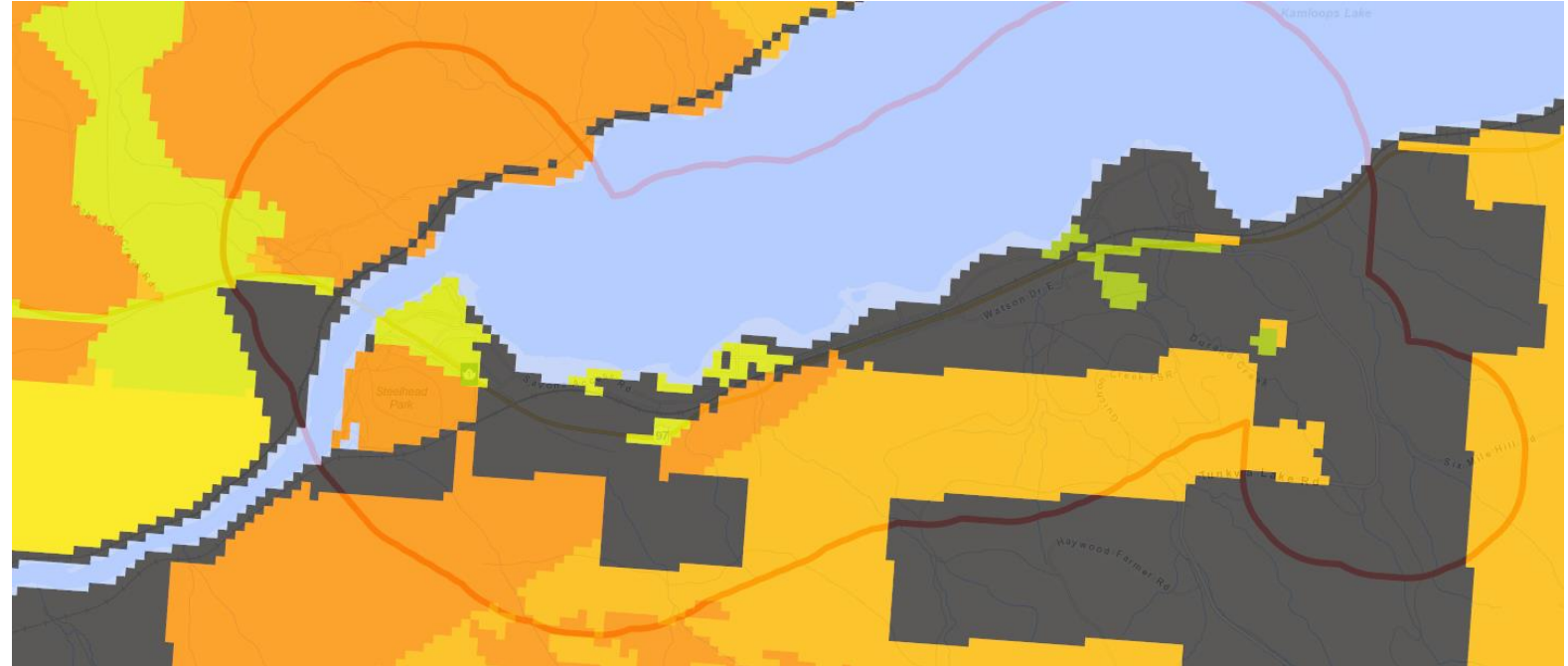


Area burned within the Copper Desert Country electoral area boundary, from 1919 to 2022.



# Provincial Strategic Threat Analysis (PSTA)

---



# Provincial Strategic Threat Assessment (PSTA)

PSTA Threat Rating	Area (ha)	%
No Data (Private Land)	11455.68668	41.9%
High	7484.655128	27.4%
Moderate	4106.659619	15.0%
Water	2164.039981	7.9%
Extreme	2104.589136	7.7%
Low	47.573456	0.2%
Total	27363.204	100.0%

Within the  
1km Eligible  
WUI

PSTA Threat Rating	Area (ha)	%
High	156791.1433	45.2%
Extreme	82605.75095	23.8%
Moderate	67103.17143	19.3%
No Data (Private Land)	28885.50536	8.3%
Water	9280.678494	2.7%
Low	2404.747717	0.7%
Total	347070.9972	100.0%

Across all of  
Copper  
Desert  
Country

# Seven FireSmart Disciplines

---

## TOGETHER WE ARE PREPARED





# Seven FireSmart Disciplines



# Vegetation Management

---



## Goal:

- Reduce intensity and spread of wildfire
- Two levels:
  - Residential
  - Landscape

# Vegetation Management





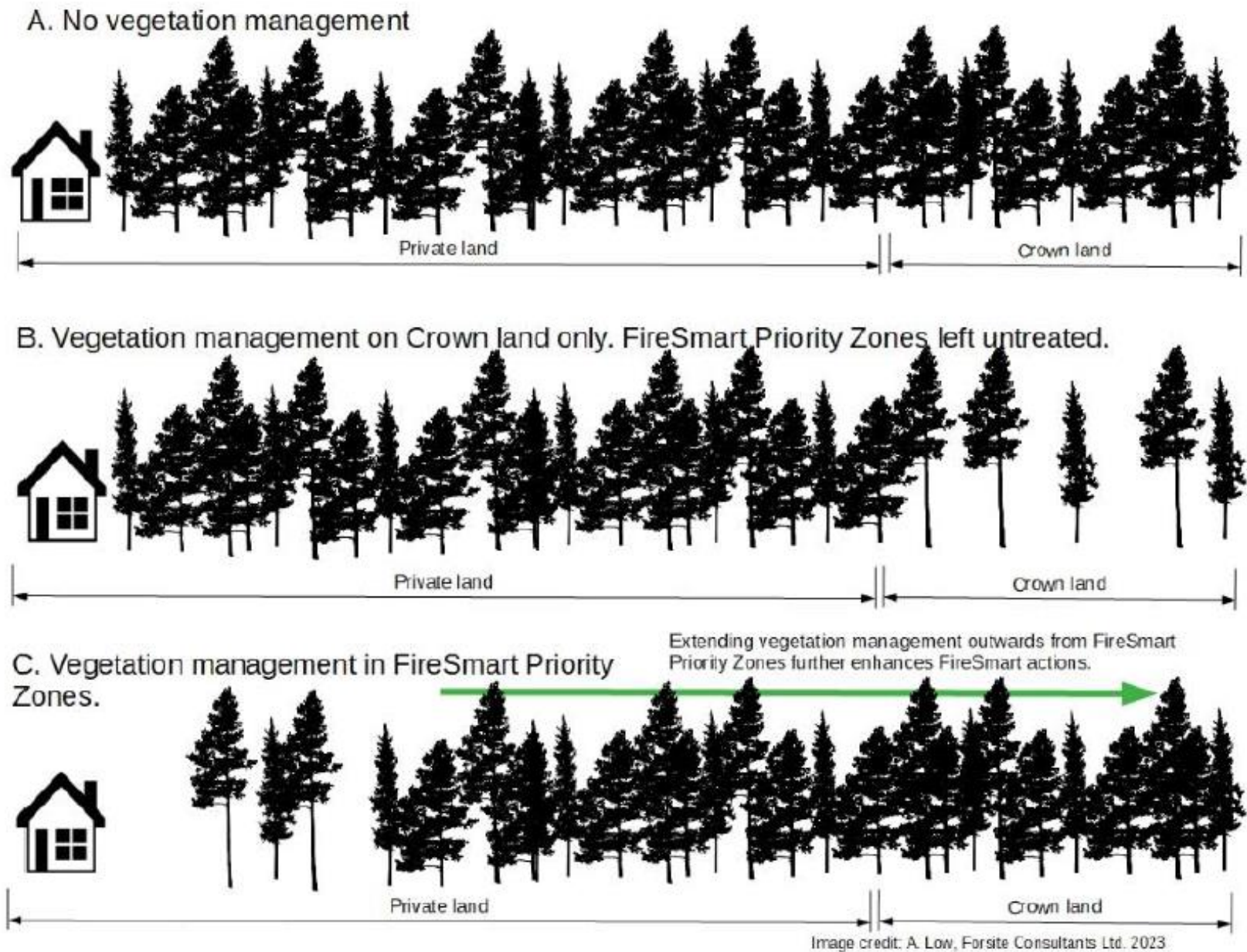


Figure 21 Vegetation management actions are most effective when they prioritize fuel hazard mitigation beginning in the FireSmart priority zones and progressing outwards.



# Action Plan & Recommendations

---

- List of Action Items
  - Primarily focused on CRI funding
- Proposed Fuels Treatments (in progress)



Photo credit: Hailey Sigalet





Photo credit: Hailey Sigalet

# Questions?

---



**Andy Low, RPF**

Senior Wildland Fire Specialist  
Kamloops, BC

cell 778-220-7834



**Hailey Sigalet, RPF**

Fuel Management Specialist  
Kamloops, BC

cell 778-678-4636