

Community Wildfire Resiliency Plan

**Thompson-Nicola Regional District Electoral
Area “L” (Grasslands)**

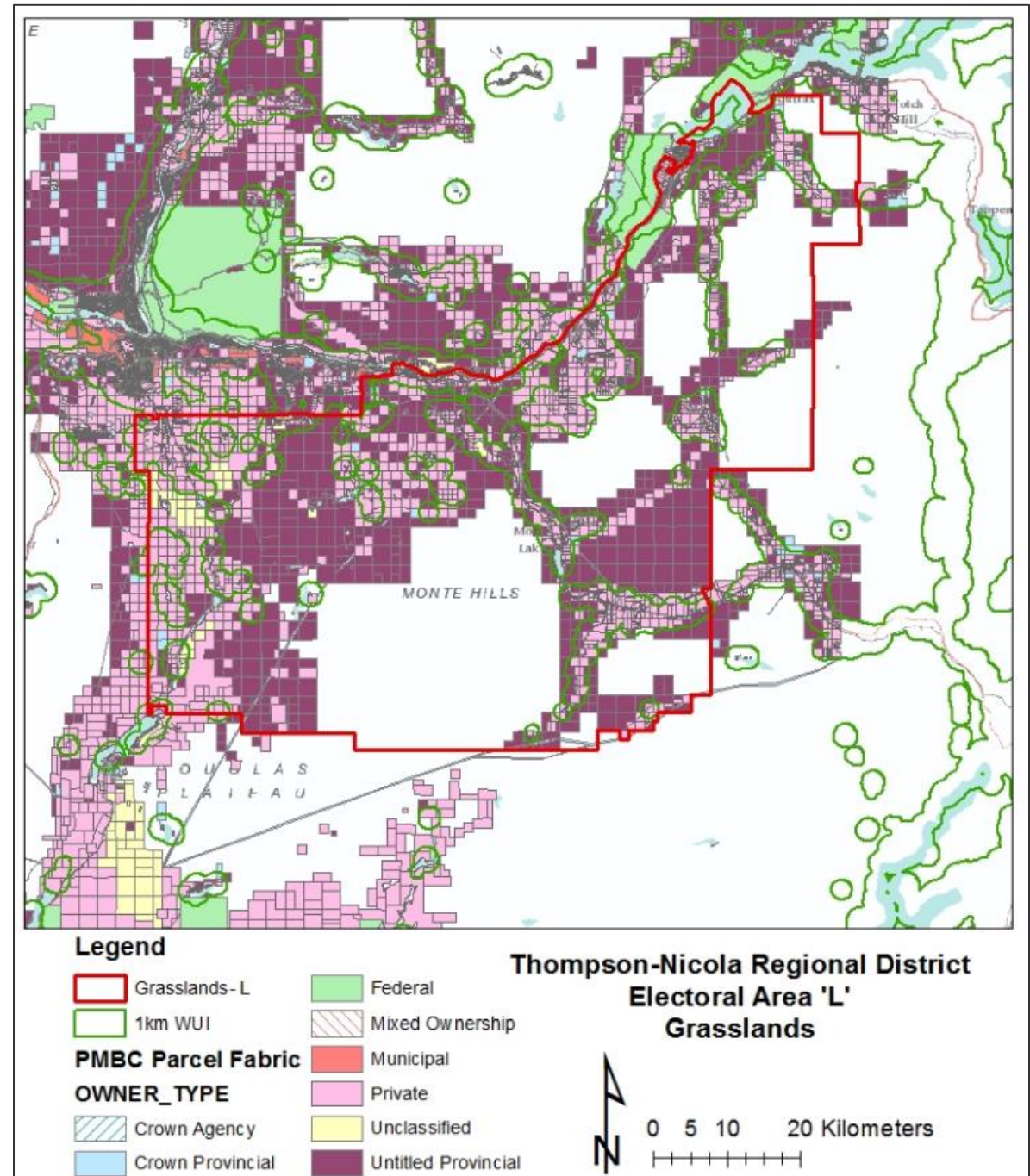
Outline

- ① **Community Wildfire Resiliency Plan**
- ② **Community Description**
- ③ **Wildfire Risk Assessment**
- ④ **Seven FireSmart Disciplines**
- ⑤ **Action Plan & Recommendations**
- ⑥ **Questions**



Photo credit: Mike Svab

Area of Interest



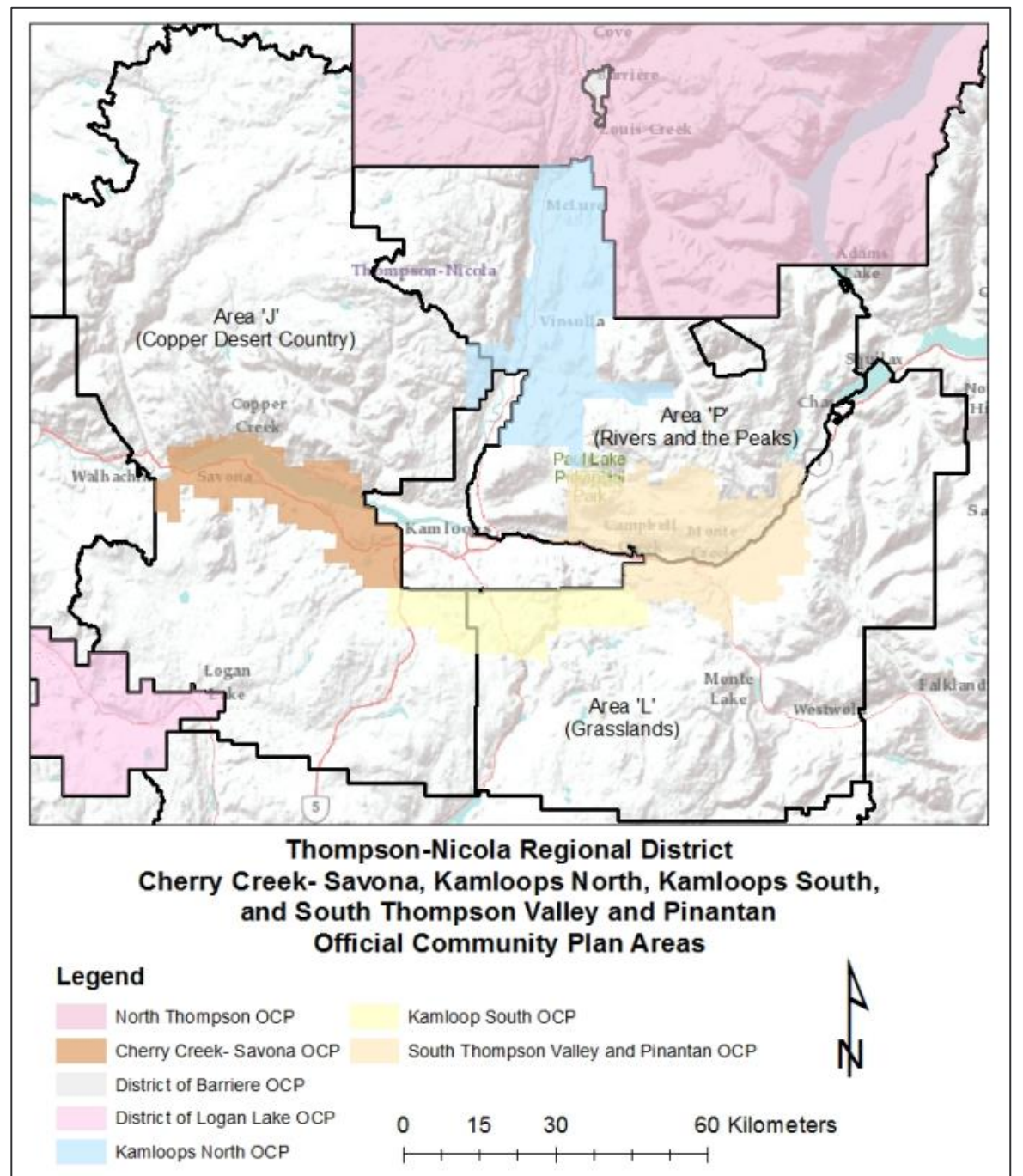
Community Wildfire Resiliency Plan

- High level plan
- Improve a community's wildfire preparedness
- Mitigate losses from possible wildfire
- Seven FireSmart principles
- Unlocks government funding sources



Photo credit: Madison Hughes

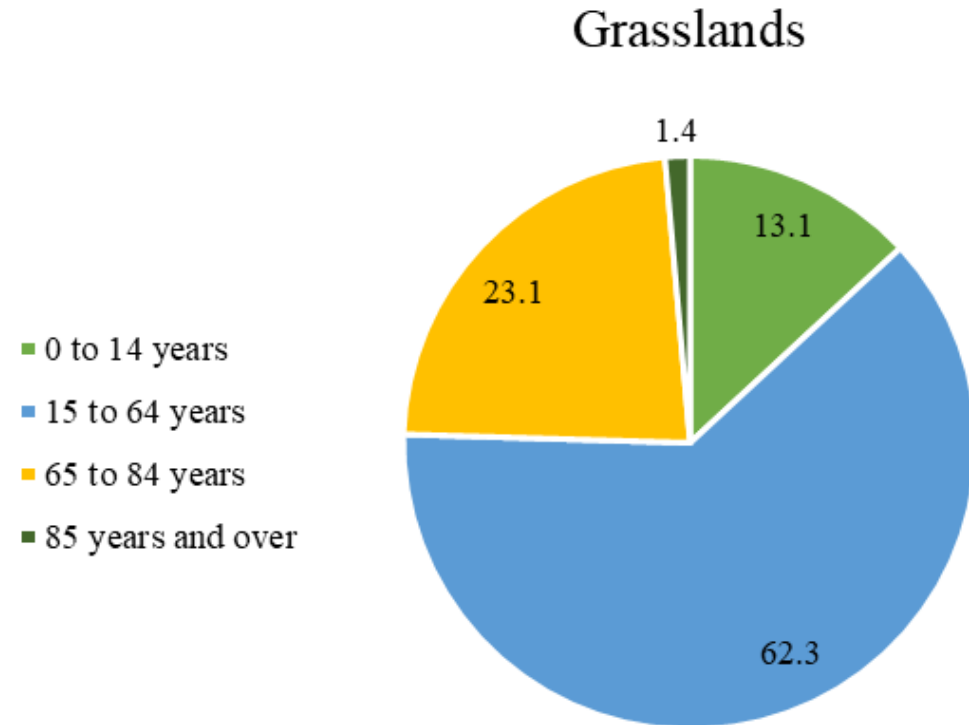
Community Description



Community Description - Demographics

Total Population: 3,321 (2021)

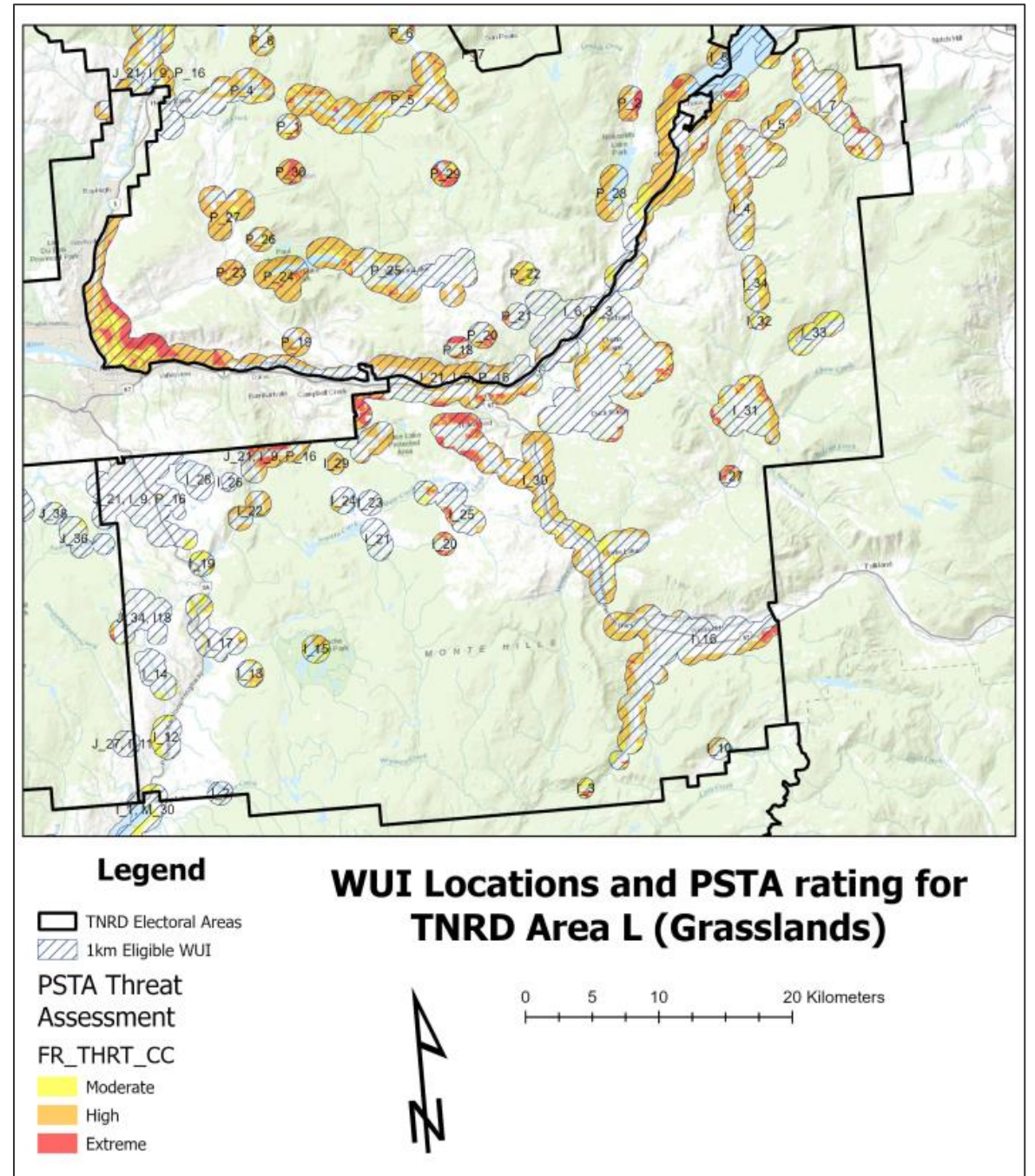
Population Growth: 12.8% since 2016



Community Description - Land Ownership

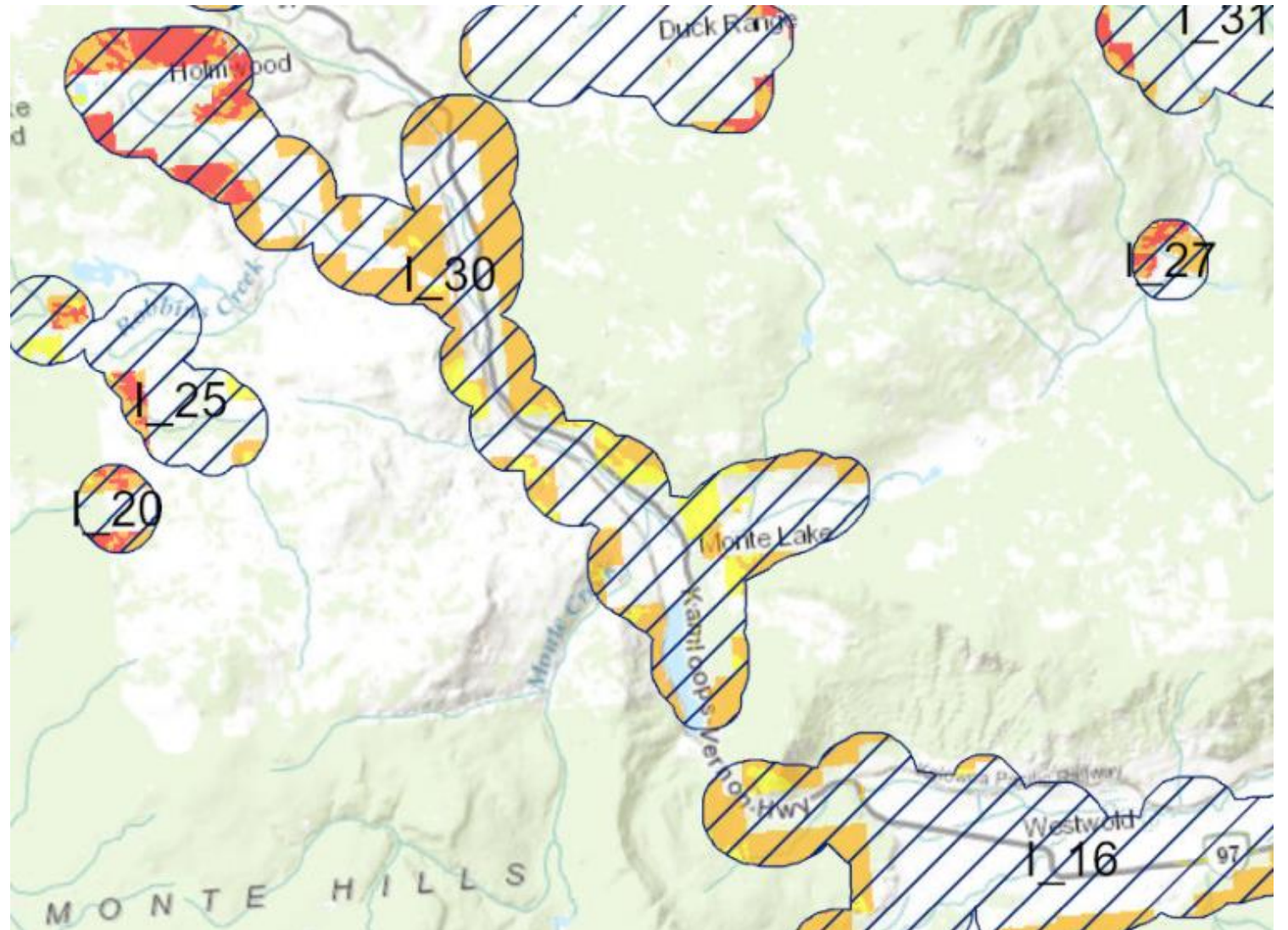
Owner Type	Area (ha) Total	%	Area (ha) in WUI	%
Untitled Provincial	61338.85	52.6%	10282.77	24.4%
Private	49875.11	42.8%	29978.48	71.1%
Unclassified	2393.67	2.1%	565.33	1.3%
Crown Provincial	1865.13	1.6%	655.49	1.6%
Federal	1080.37	0.9%	547.48	1.3%
Municipal	61.67	0.1%	61.67	0.1%
Crown Agency	47.73	0.04%	47.73	0.1%
Total	116662.53	100.0%	42138.95	100.0%

Wildfire Risk Assessment

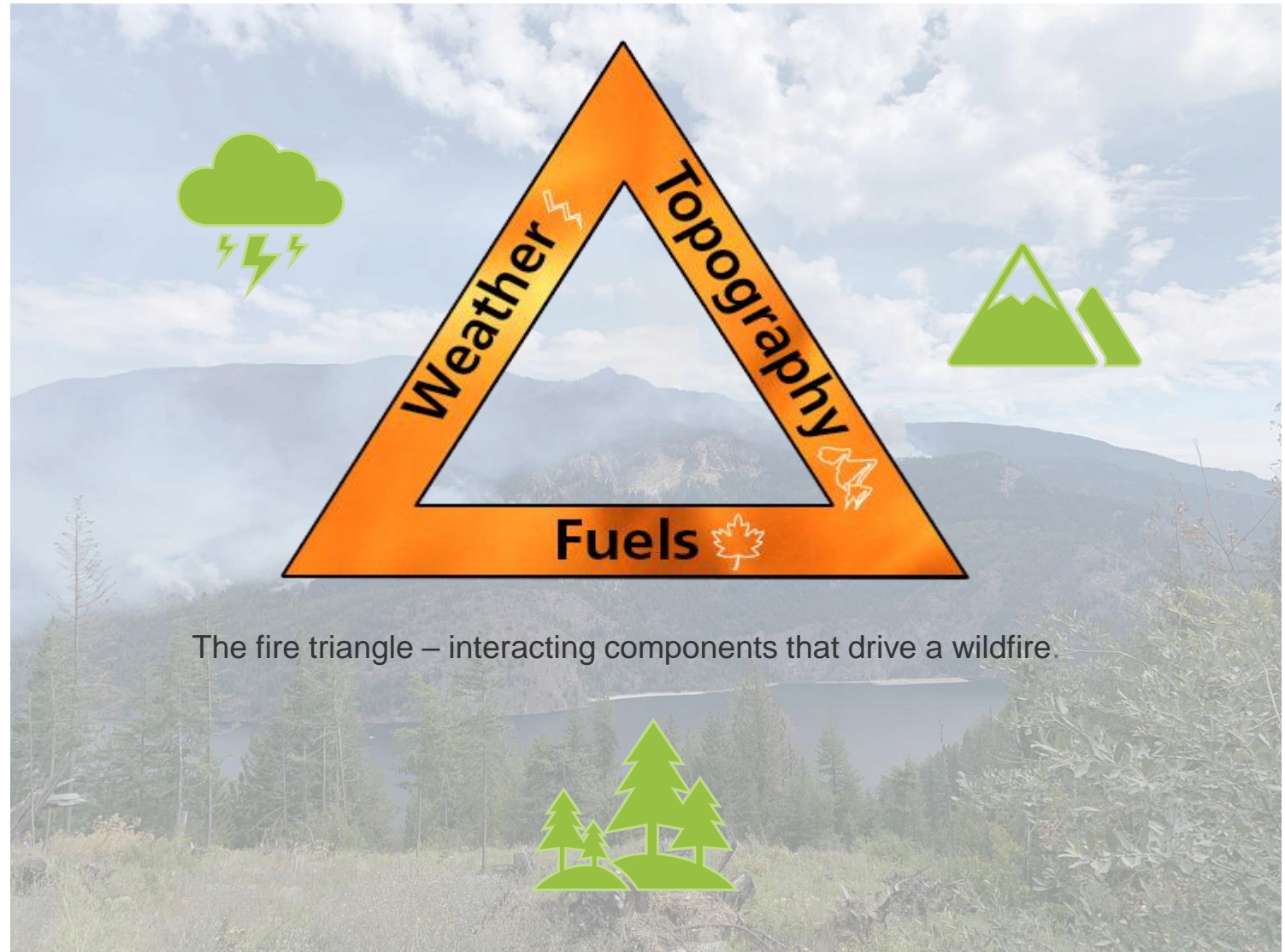


Wildfire Risk Assessment – “1km Eligible WUI”

WUI: *Wildland
Urban Interface*



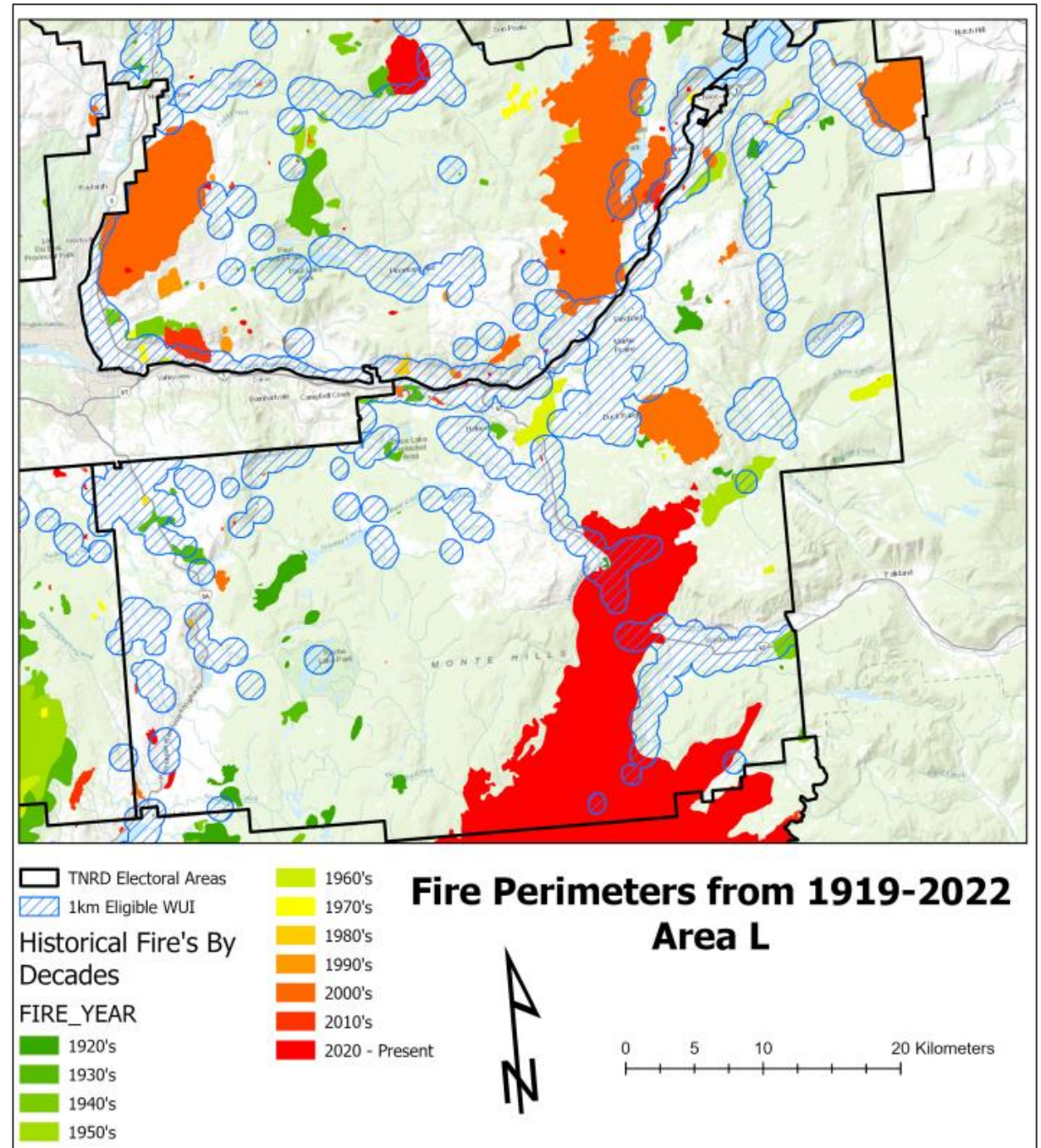
Wildfire Risk Assessment – The Fire Environment



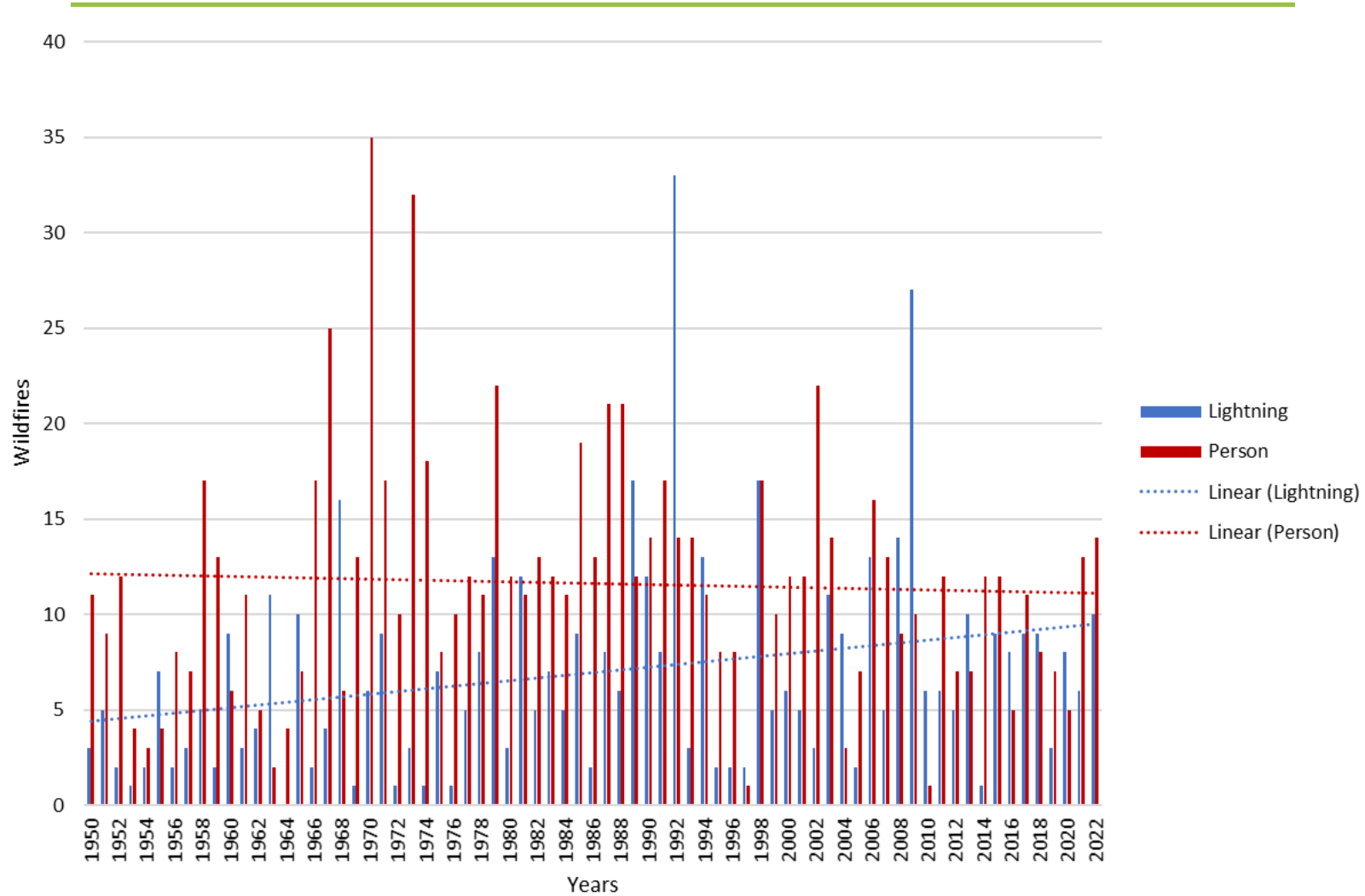
The fire triangle – interacting components that drive a wildfire.

Climate Variable	Season	Projected Change from 1961-1990 Baseline	
		Ensemble Median	Range (10th to 90th percentile)
Temperature (°C)	Annual	+3.2 °C	+2.2 °C to +4.2 °C
Precipitation (%)	Annual	2.60%	-0.53% to +8.8%
	Summer	1.10%	-25% to +7.8%
	Winter	1.80%	-1.5% to +8.0%
Precipitation as Snow (%)	Annual	-28%	-35% to -26%
	Winter	-20%	-25% to -15%
	Spring	-47%	-54% to -41%
Frost-Free Days (days)	Annual	+44 days	+34 to +63 days

Wildfire Risk Assessment – Fire History

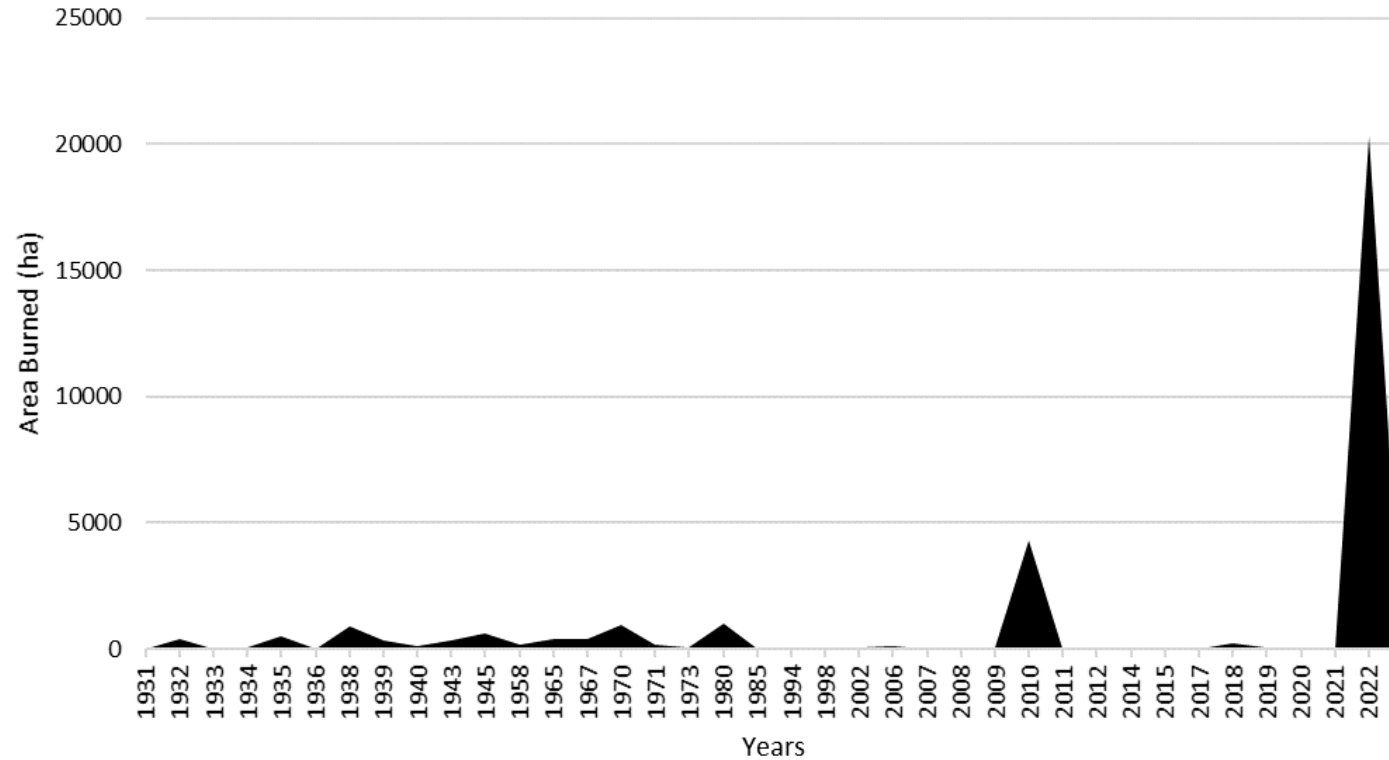


Wildfire History (1950 -2022)



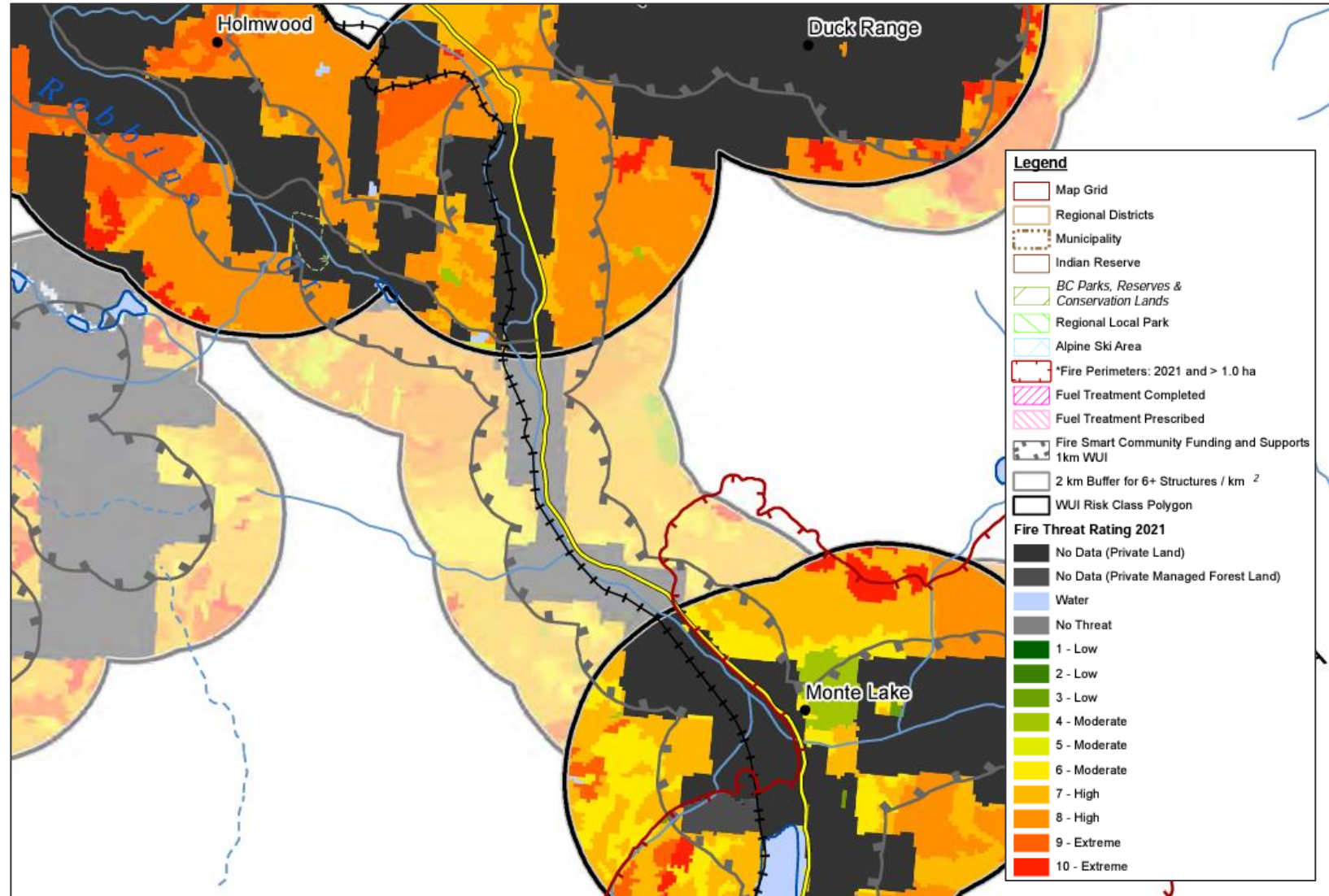
Annual wildfire occurrence within the Grasslands electoral area boundary, from 1950 to 2022.

Area Burned (1919 -2022)



Area burned within the Grasslands electoral area boundary, from 1919 to 2022.

Provincial Strategic Threat Assessment (PSTA)



Provincial Strategic Threat Assessment (PSTA)

PSTA Threat Rating	Area (ha)	%
No Data (Private Land)	30433.54589	66.9%
High	8708.106028	19.1%
Moderate	2534.30443	5.6%
Water	1953.711848	4.3%
Extreme	1636.625989	3.6%
Low	169.274427	0.4%
No Data (Private Managed Forest Land)	50.5	0.1%
Total	45486.06861	100.0%

PSTA Threat Rating	Area (ha)	%
High	78315.68359	40.0%
No Data (Private Land)	51499.78745	26.3%
Moderate	34743.72862	17.7%
Extreme	25926.62352	13.2%
Water	4067.145981	2.1%
Low	1391.986345	0.7%
No Data (Private Managed Forest Land)	50.5	0.03%
Total	195995.4555	100.0%

Within the 1km Eligible WUI.

Across all Grassland electoral area.

Seven FireSmart Disciplines

TOGETHER WE ARE PREPARED



Seven FireSmart Disciplines



Vegetation Management



Goal:

- Reduce intensity and spread of wildfire
- Two levels:
 - Residential
 - Landscape

Vegetation Management



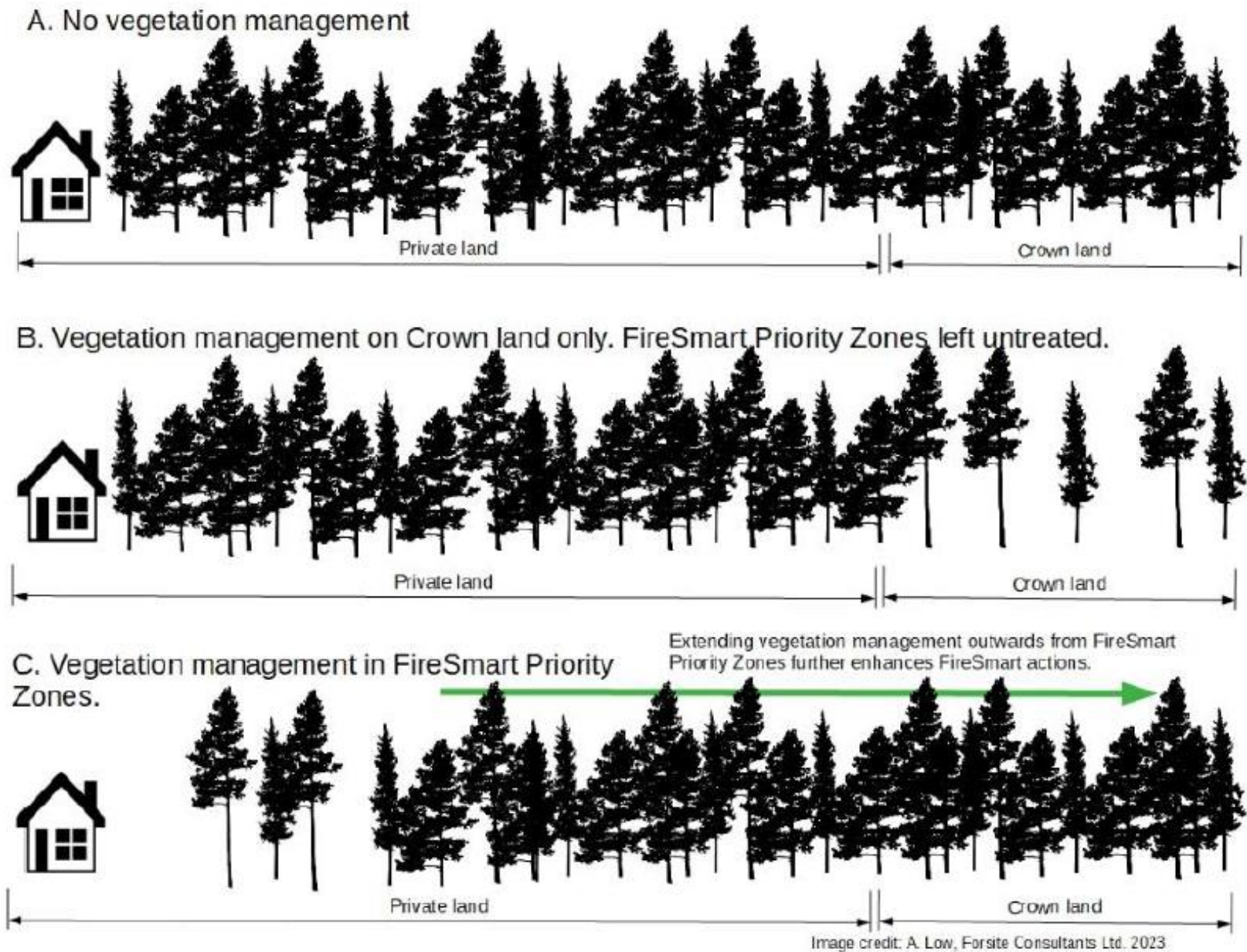


Figure 21 Vegetation management actions are most effective when they prioritize fuel hazard mitigation beginning in the FireSmart priority zones and progressing outwards.

Action Plan & Recommendations

- List of Action Items
 - Primarily focused on CRI funding
- Proposed Fuels Treatments (in progress)





Photo credit: Hailey Sigalet

Questions?



Andy Low, RPF

Senior Wildland Fire Specialist
Kamloops, BC

cell 778-220-7834



Hailey Sigalet, RPF

Fuel Management Specialist
Kamloops, BC

cell 778-678-4636