

Community Wildfire Resiliency Plan

**Thompson-Nicola Regional District Electoral
Area “M” & “N” (Nicola Valley North & South)**

Outline

- ① **Community Wildfire Resiliency Plan**
- ② **Community Description**
- ③ **Wildfire Risk Assessment**
- ④ **Seven FireSmart Disciplines**
- ⑤ **Action Plan & Recommendations**
- ⑥ **Questions**



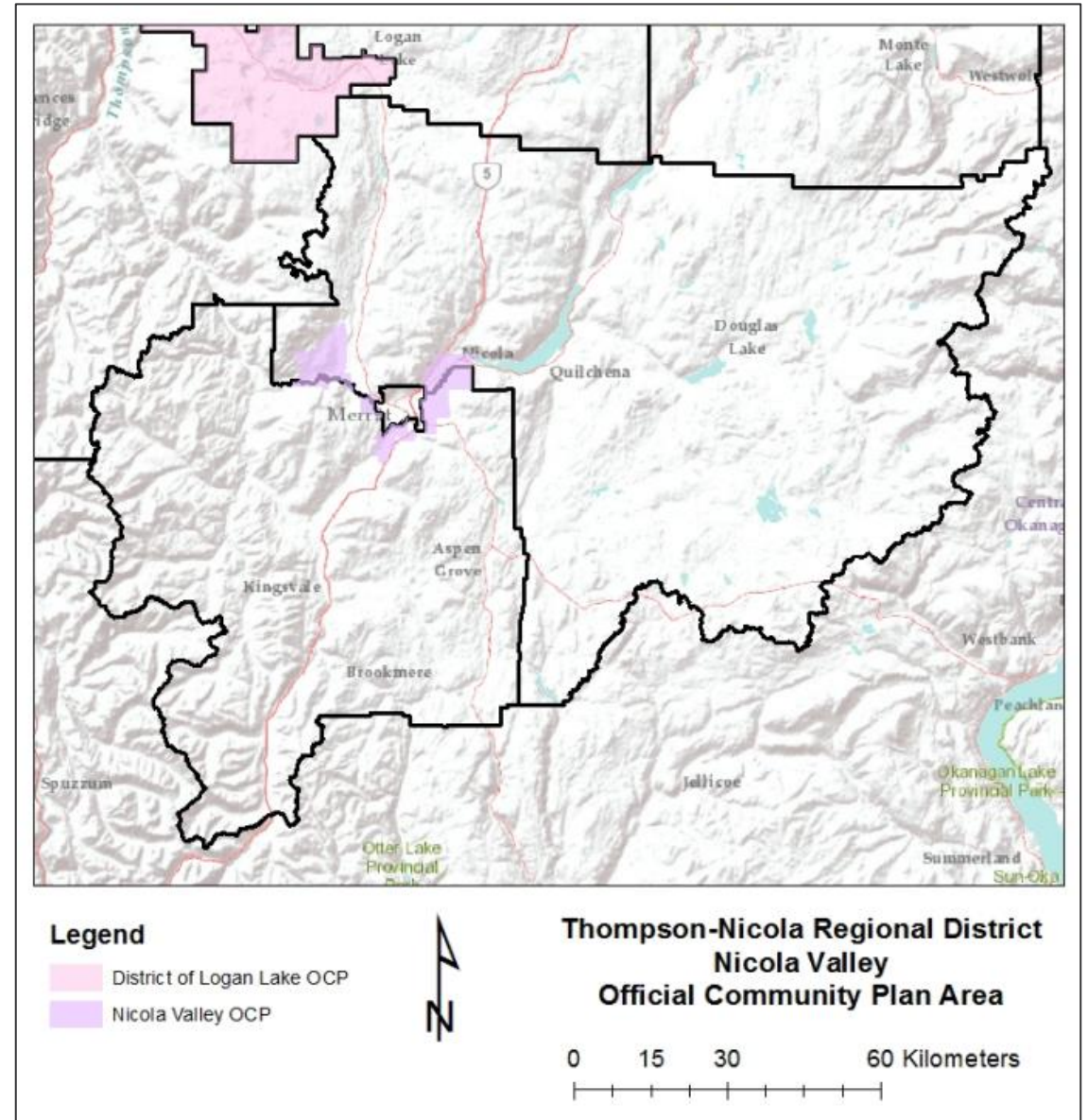
Community Wildfire Resiliency Plan

- High level plan
- Improve a community's wildfire preparedness
- Mitigate losses from possible wildfire
- Seven FireSmart principles
- Unlocks government funding sources

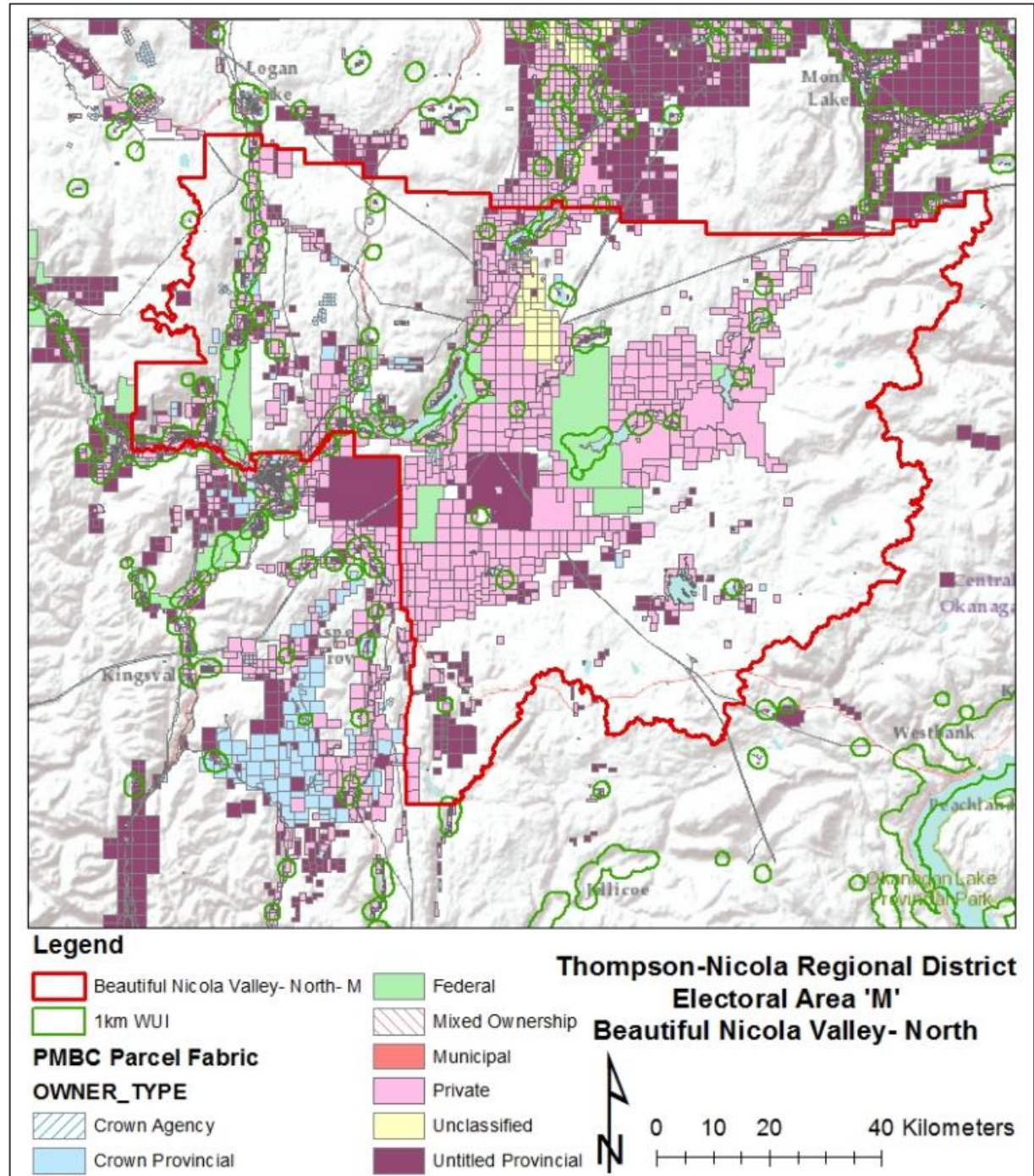


Photo credit: Madison Hughes

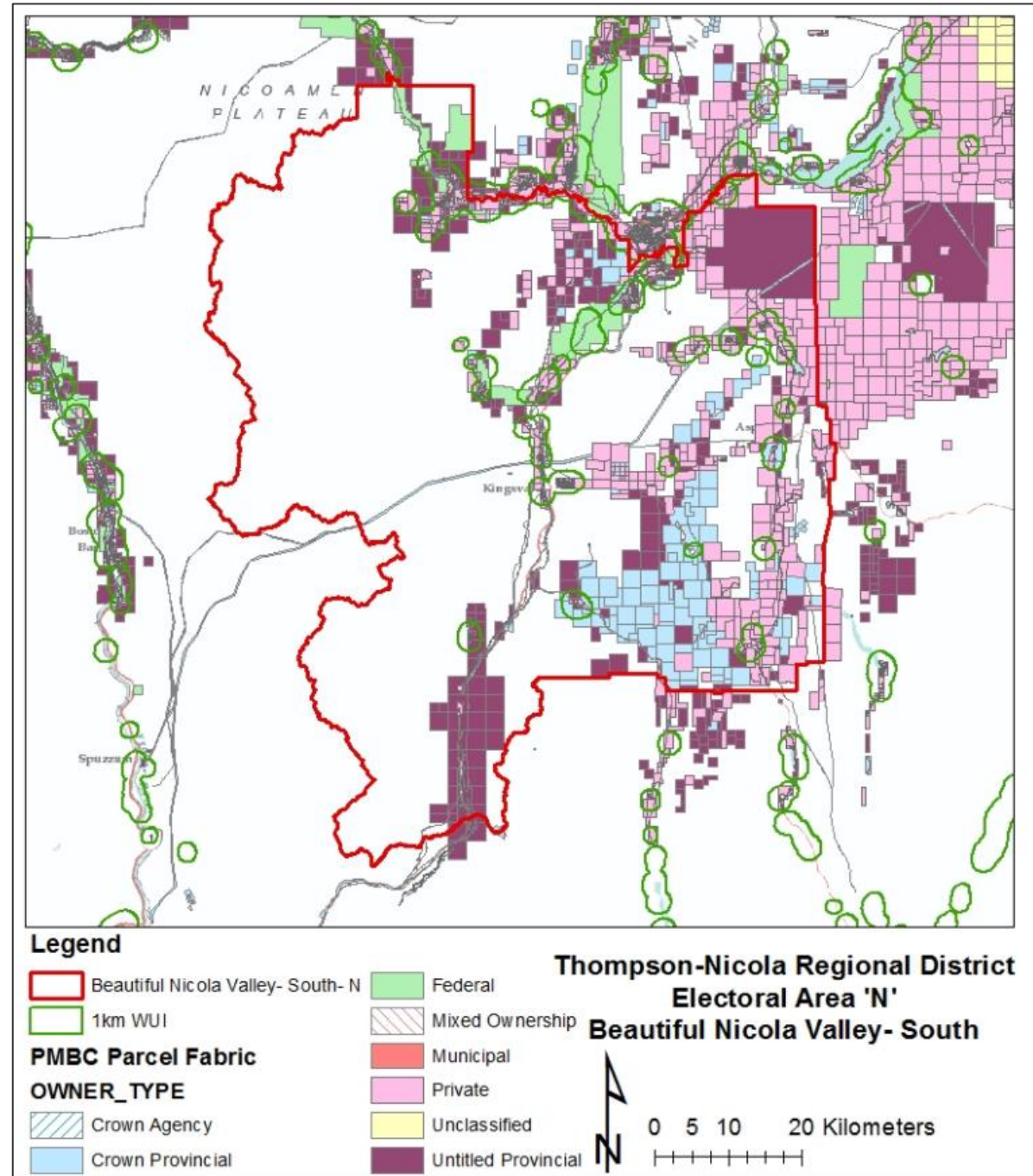
Community Description



Area of Interest



Area of Interest



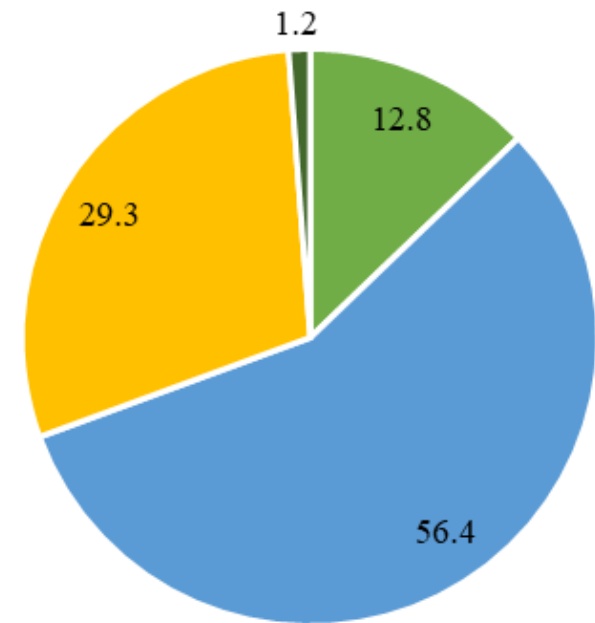
Community Description - Demographics

Total Population: 1,637 (2021)

Population Growth: 2.4% since 2016

Beautiful Nicola Valley- North

- 0 to 14 years
- 15 to 64 years
- 65 to 84 years
- 85 years and over

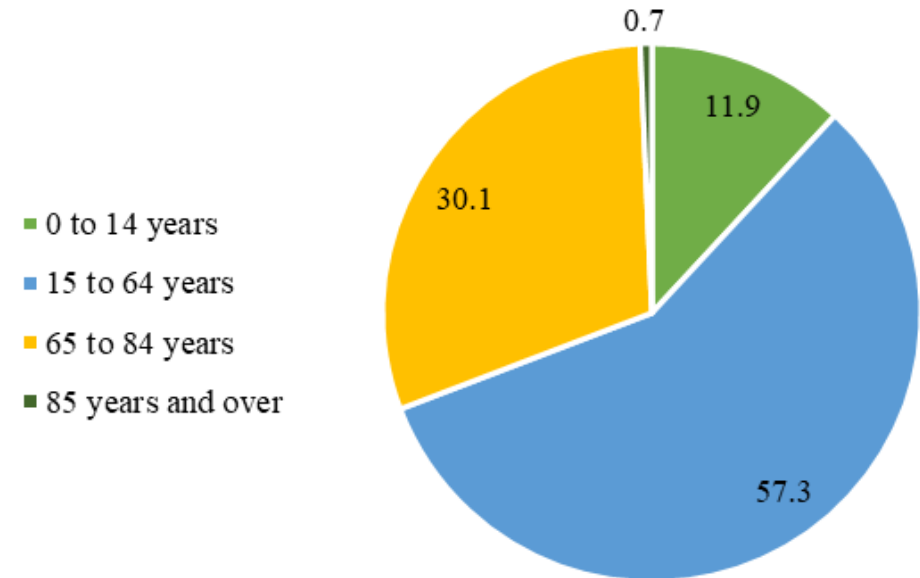


Community Description - Demographics

Total Population: 717 (2021)

Population Growth: -5.9% since 2016

Beautiful Nicola Valley- South



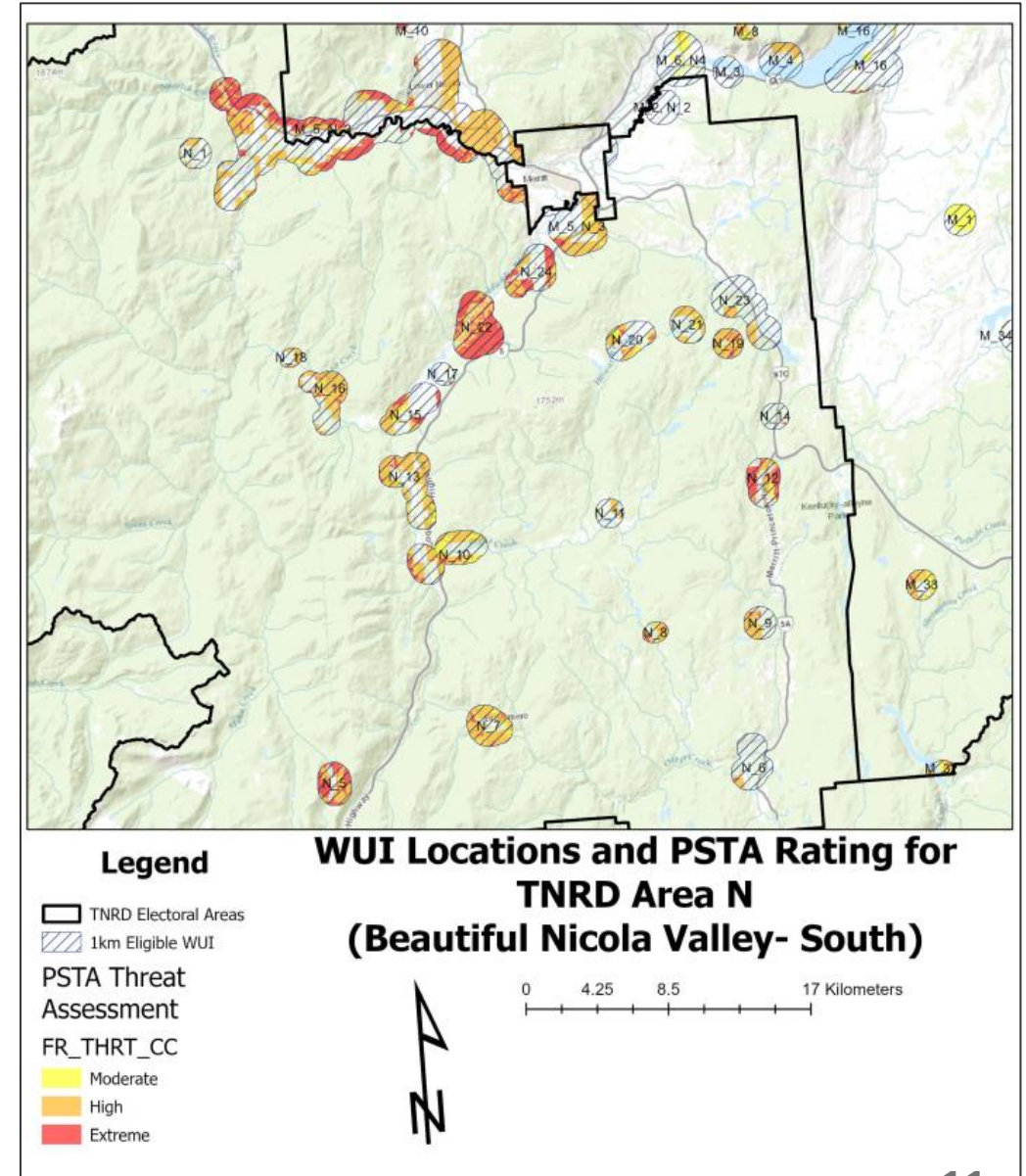
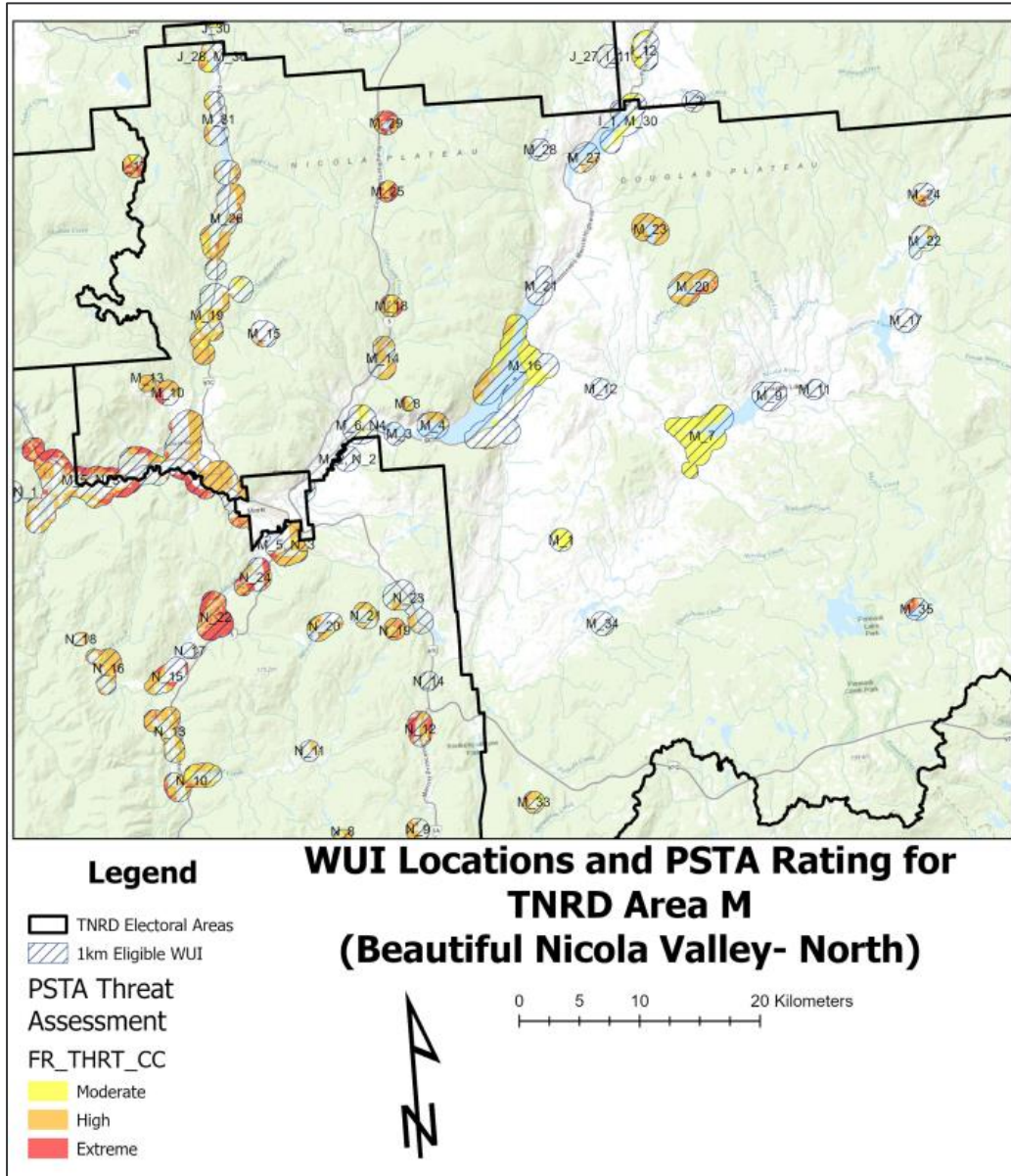
Community Description - Land Ownership (North)

Owner Type	Area (ha) Total	%	Area (ha) in WUI	%
Private	99123.09	66.5%	11750.77	64.5%
Untitled Provincial	20486.06	13.8%	1566.85	8.6%
Federal	18988.22	12.7%	3727.33	20.4%
Crown Provincial	5892.03	4.0%	787.09	4.3%
Unclassified	4422.58	3.0%	362.72	2.0%
Crown Agency	21.77	0.01%	21.11	0.1%
Municipal	14.53	0.01%	14.53	0.1%
Total	148948.28	100.0%	18230.4	100.0%

Community Description - Land Ownership (South)

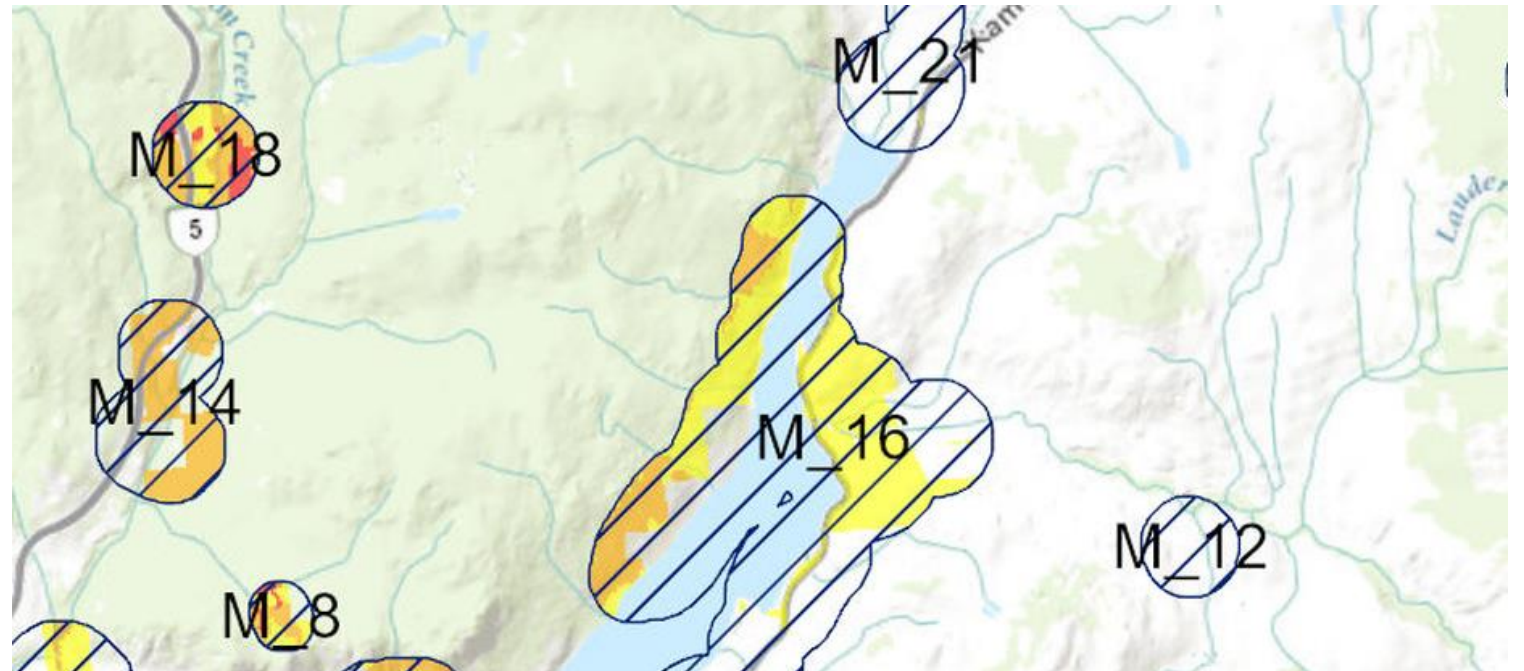
Owner Type	Area (ha) Total	%	Area (ha) in WUI	%
Private	29629.05	37.0%	7248.59	58.2%
Untitled Provincial	27444.18	34.3%	2054.37	16.5%
Crown Provincial	18198.82	22.7%	1331.27	10.7%
Federal	4541.32	5.7%	1712.92	13.8%
Unclassified	138.71	0.2%	77.73	0.6%
Crown Agency	124.5	0.2%	23.25	0.2%
Municipal	2.4	0.003%	0.51	0.004%
Total	80078.98	100.0%	12448.64	100.0%

Wildfire Risk Assessment

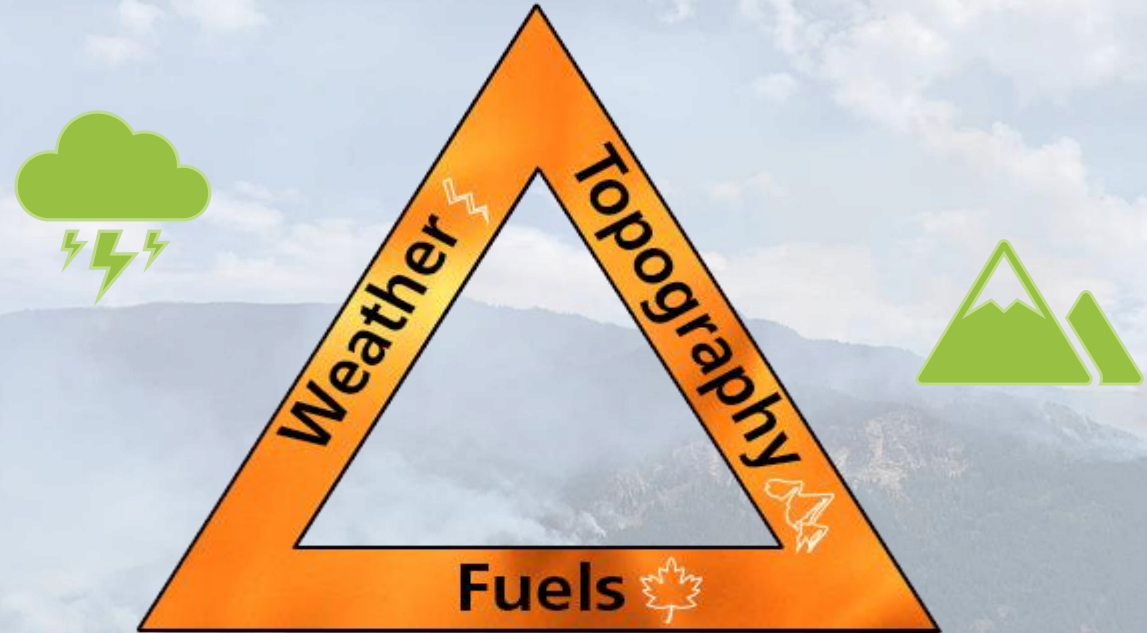


Wildfire Risk Assessment – “1km Eligible WUI”

WUI: *Wildland
Urban Interface*



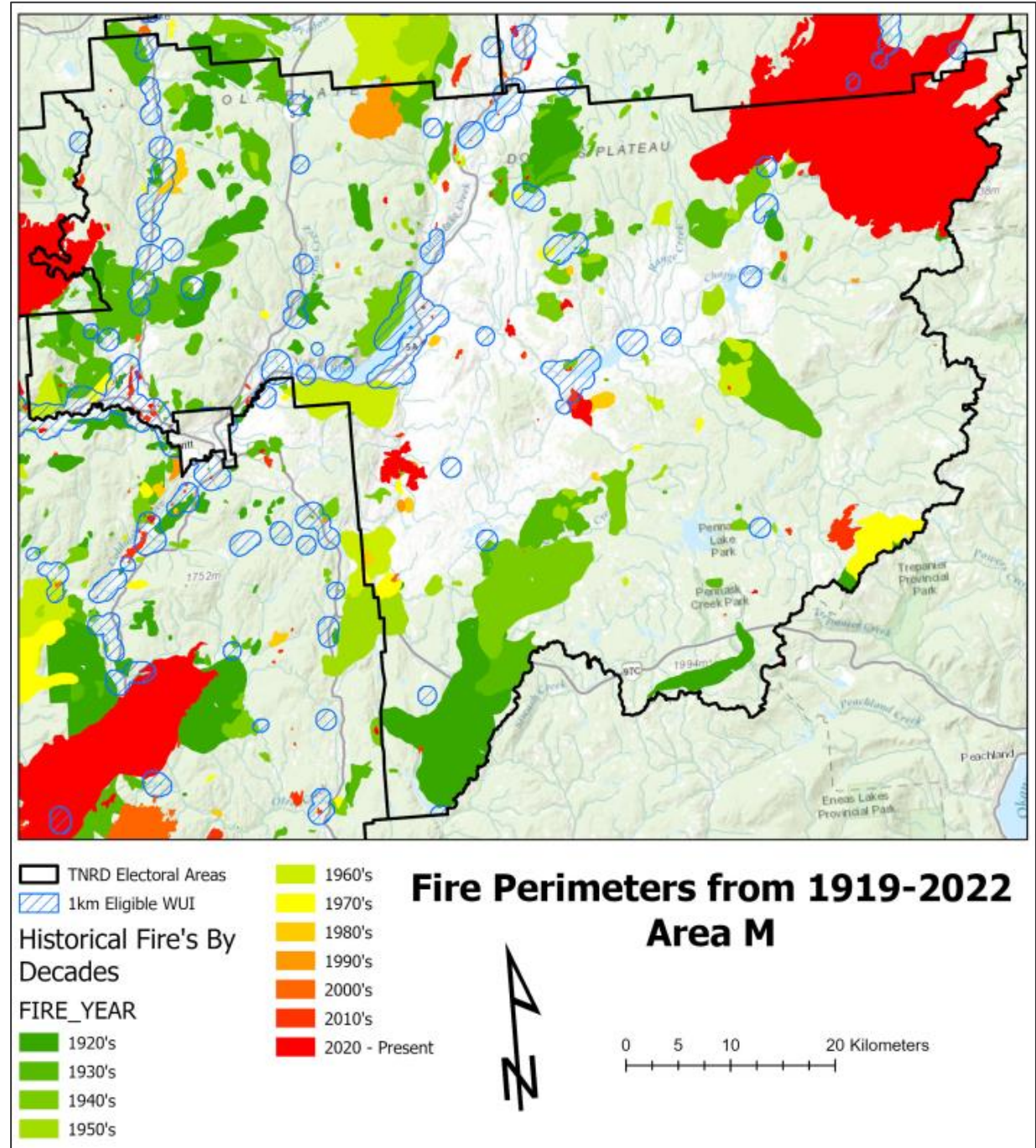
Wildfire Risk Assessment – The Fire Environment



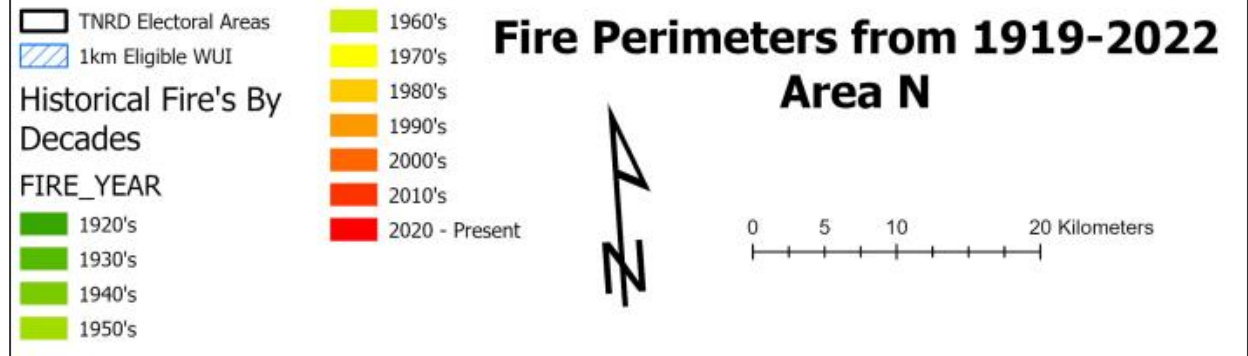
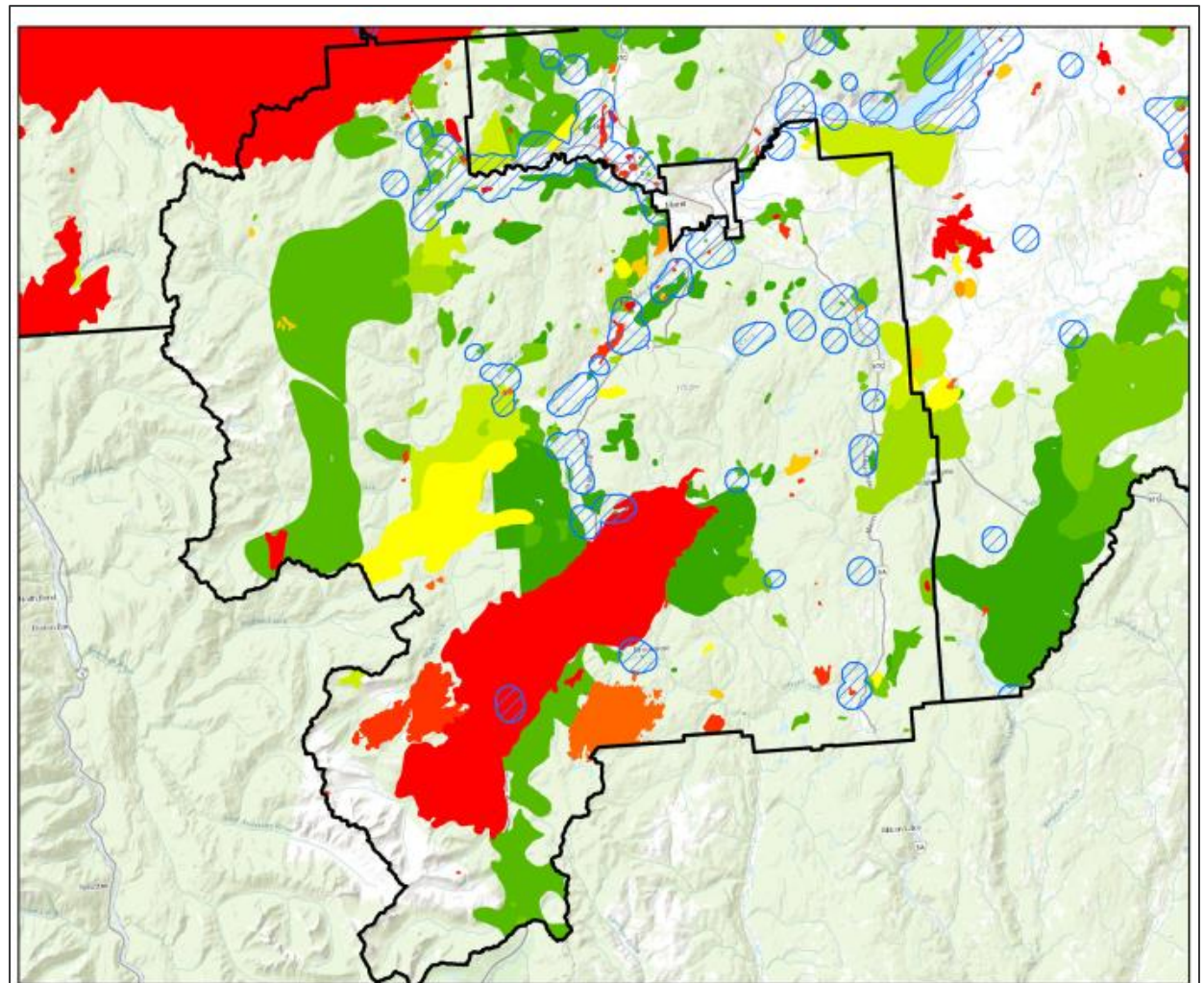
The fire triangle – interacting components that drive a wildfire.

Climate Variable	Season	Projected Change from 1961-1990 Baseline	
		Ensemble Median	Range (10th to 90th percentile)
Temperature (°C)	Annual	+3.2 °C	+2.2 °C to +4.2 °C
Precipitation (%)	Annual	2.60%	-0.53% to +8.8%
	Summer	1.10%	-25% to +7.8%
	Winter	1.80%	-1.5% to +8.0%
Precipitation as Snow (%)	Annual	-28%	-35% to -26%
	Winter	-20%	-25% to -15%
	Spring	-47%	-54% to -41%
Frost-Free Days (days)	Annual	+44 days	+34 to +63 days

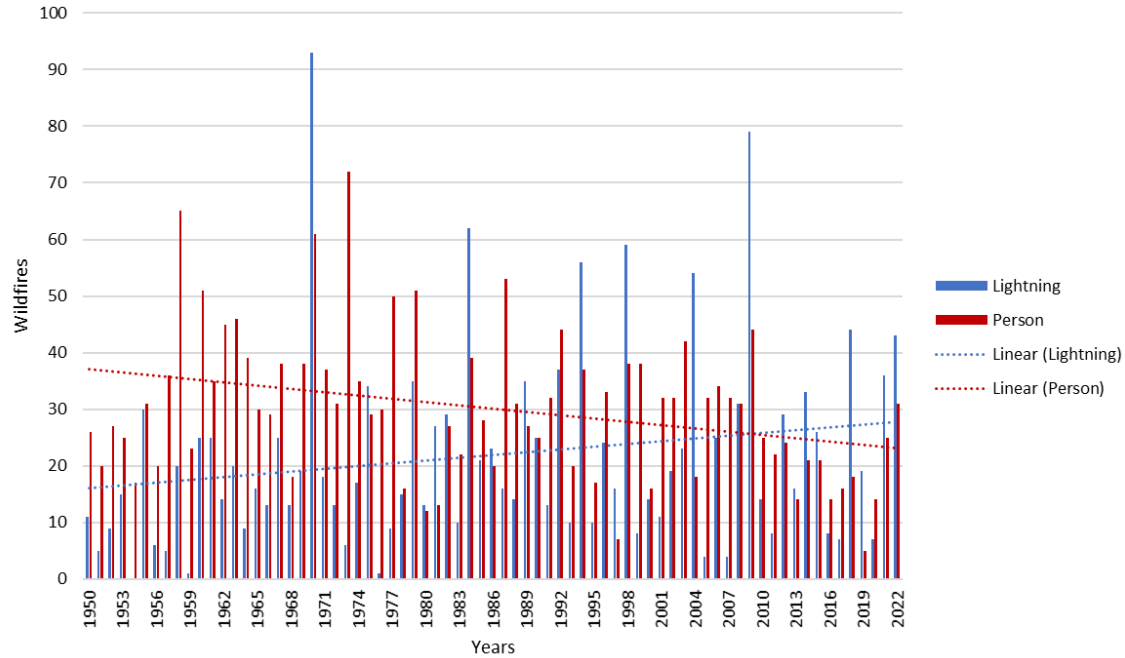
Wildfire Risk Assessment – Fire History (North)



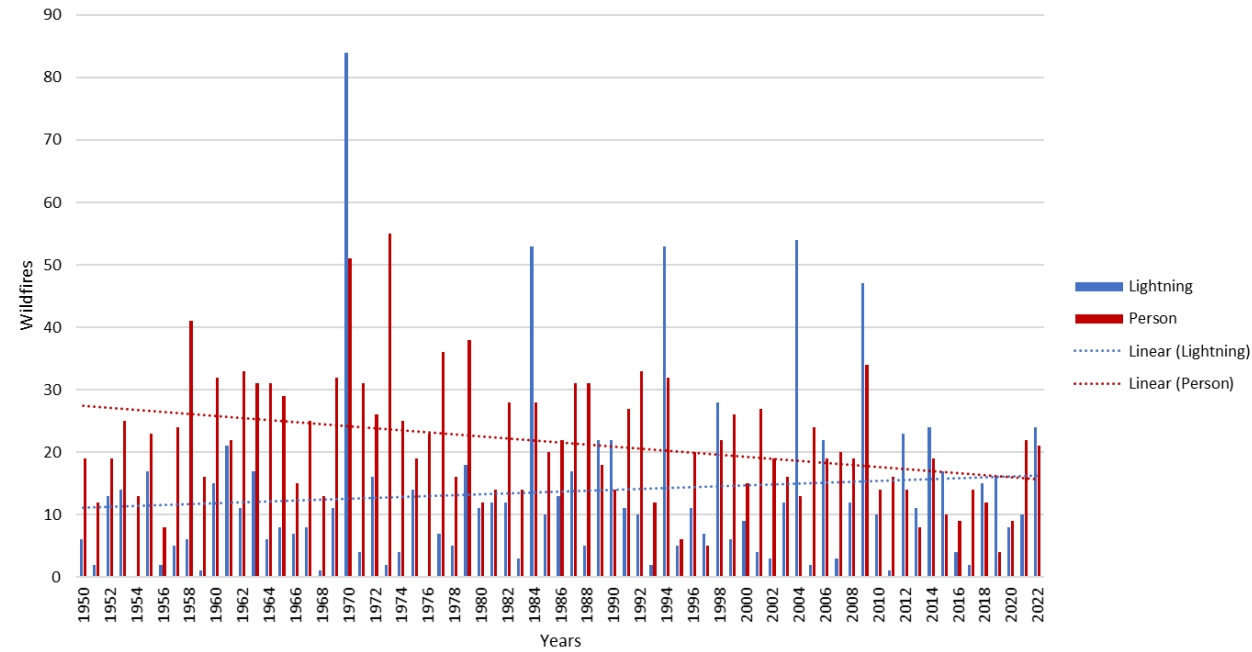
Wildfire Risk Assessment – Fire History (South)



Wildfire History (1950 -2022)



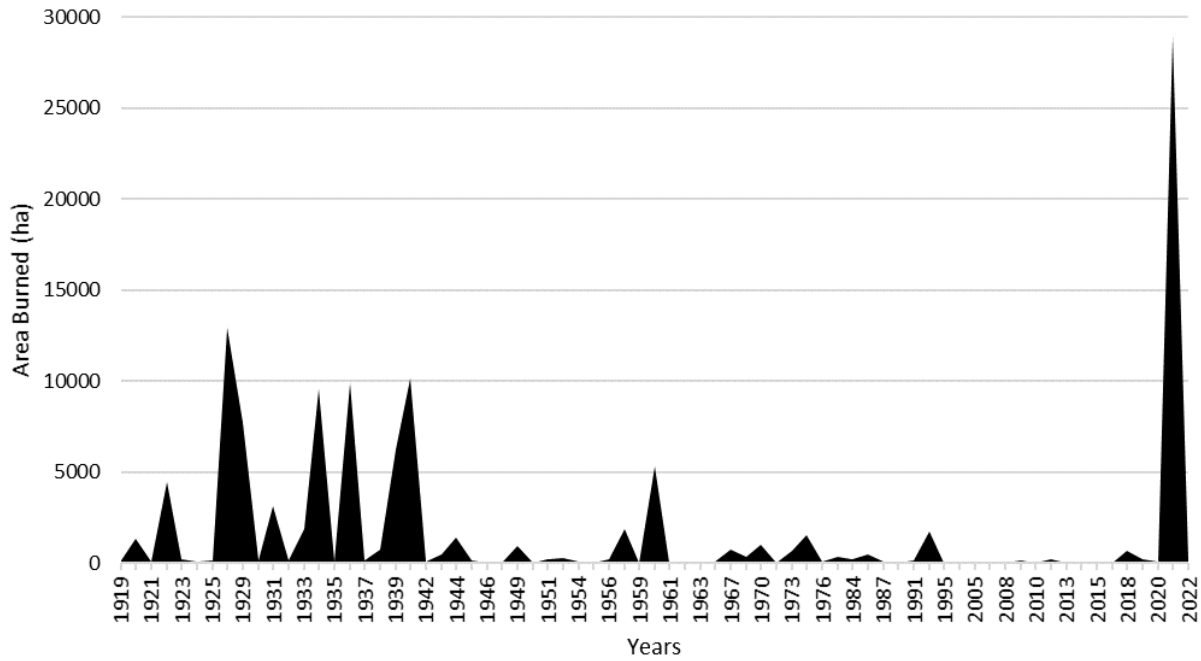
Nicola Valley North



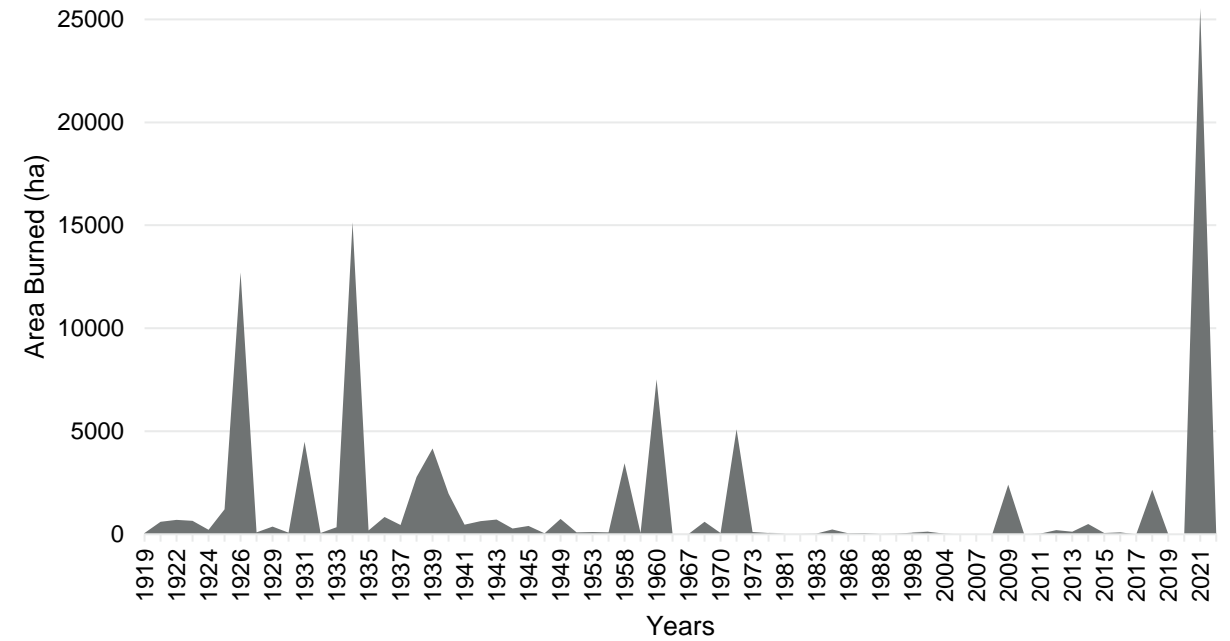
Nicola Valley South

Annual wildfire occurrence within the Nicola Valley North and South electoral area boundaries, from 1950 to 2022.

Area Burned (1919 -2022)



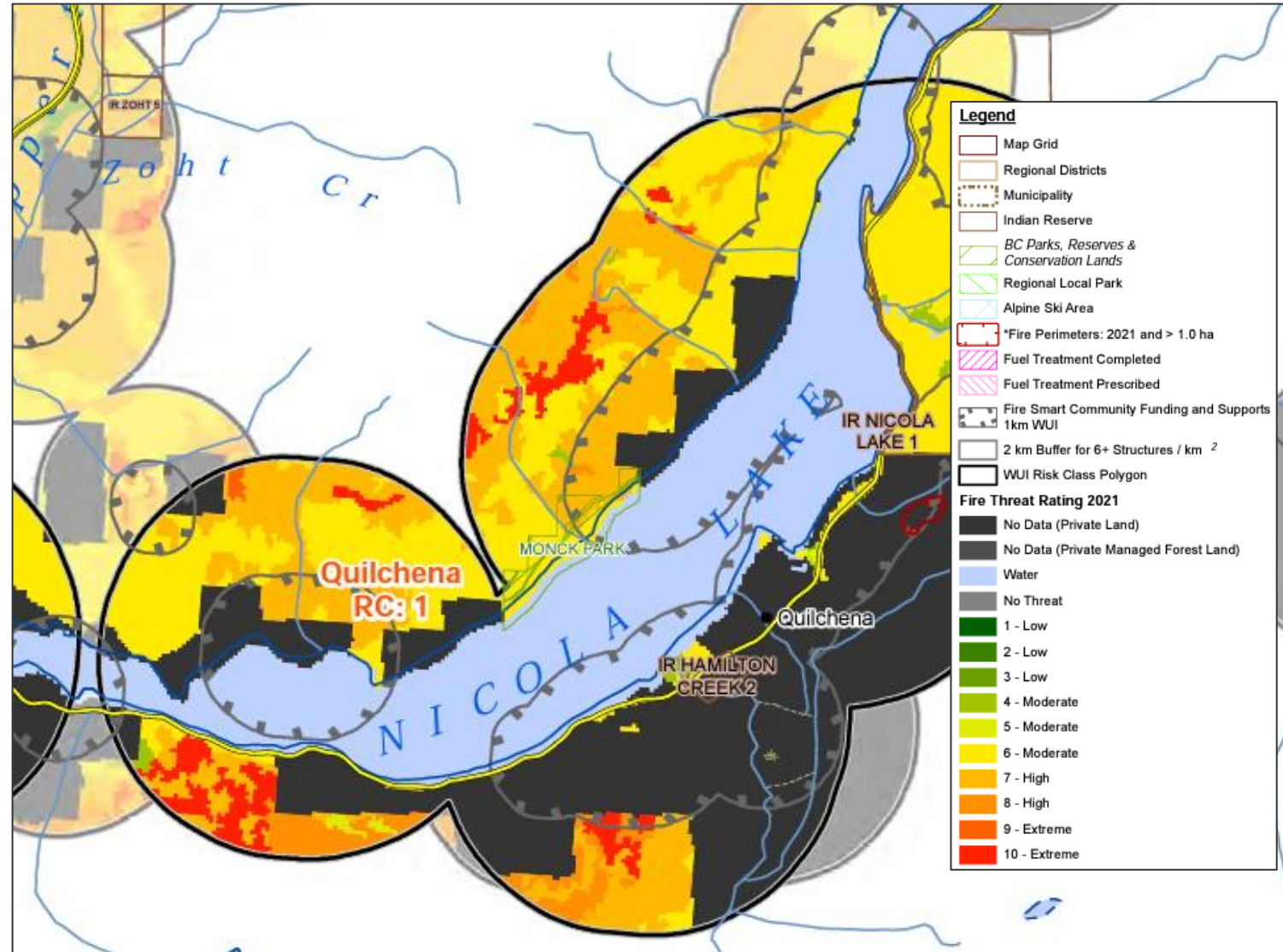
Nicola Valley North



Nicola Valley South

Area burned within the Nicola Valley North and South electoral area boundaries, from 1919 to 2022.

Provincial Strategic Threat Assessment (PSTA)



Provincial Strategic Threat Assessment (PSTA)

PSTA Threat Rating	Area (ha)	%
No Data (Private Land)	11696.5936	46.7%
High	5468.873003	21.8%
Moderate	3659.003454	14.6%
Water	3182.754962	12.7%
Extreme	907.918726	3.6%
Low	148.553486	0.6%
Total	25063.69723	100.0%

PSTA Threat Rating	Area (ha)	%
High	141756.5992	34.5%
No Data (Private Land)	102784.7136	25.0%
Extreme	93697.2897	22.8%
Moderate	61045.29536	14.9%
Water	10706.67117	2.6%
Low	810.438348	0.2%
No Data (Private Managed Forest Land)	66.75	0.02%
Total	410867.7574	100.0%

Within the
1km Eligible
WUI

Across all of
Nicola Valley
North area.

Provincial Strategic Threat Assessment (PSTA)

PSTA Threat Rating	Area (ha)	%
No Data (Private Land)	7363.44378	46.9%
High	4737.459473	30.2%
Extreme	2414.495623	15.4%
Moderate	645.966603	4.1%
Water	461.050648	2.9%
No Data (Private Managed Forest Land)	78.93227	0.5%
Low	8.763484	0.1%
Total	15710.11188	100.0%

PSTA Threat Rating	Area (ha)	%
High	99754.32983	41.4%
Extreme	86791.08208	36.1%
No Data (Private Land)	29752.86697	12.4%
Moderate	20277.40884	8.4%
Water	2210.548661	0.9%
Low	1824.206081	0.8%
No Data (Private Managed Forest Land)	80	0.03%
Total	240690.4424	100.0%

Within the
1km Eligible
WUI

Across all of
Nicola Valley
South area.

Seven FireSmart Disciplines

TOGETHER WE ARE PREPARED



Seven FireSmart Disciplines



Vegetation Management



Goal:

- Reduce intensity and spread of wildfire
- Two levels:
 - Residential
 - Landscape

Vegetation Management



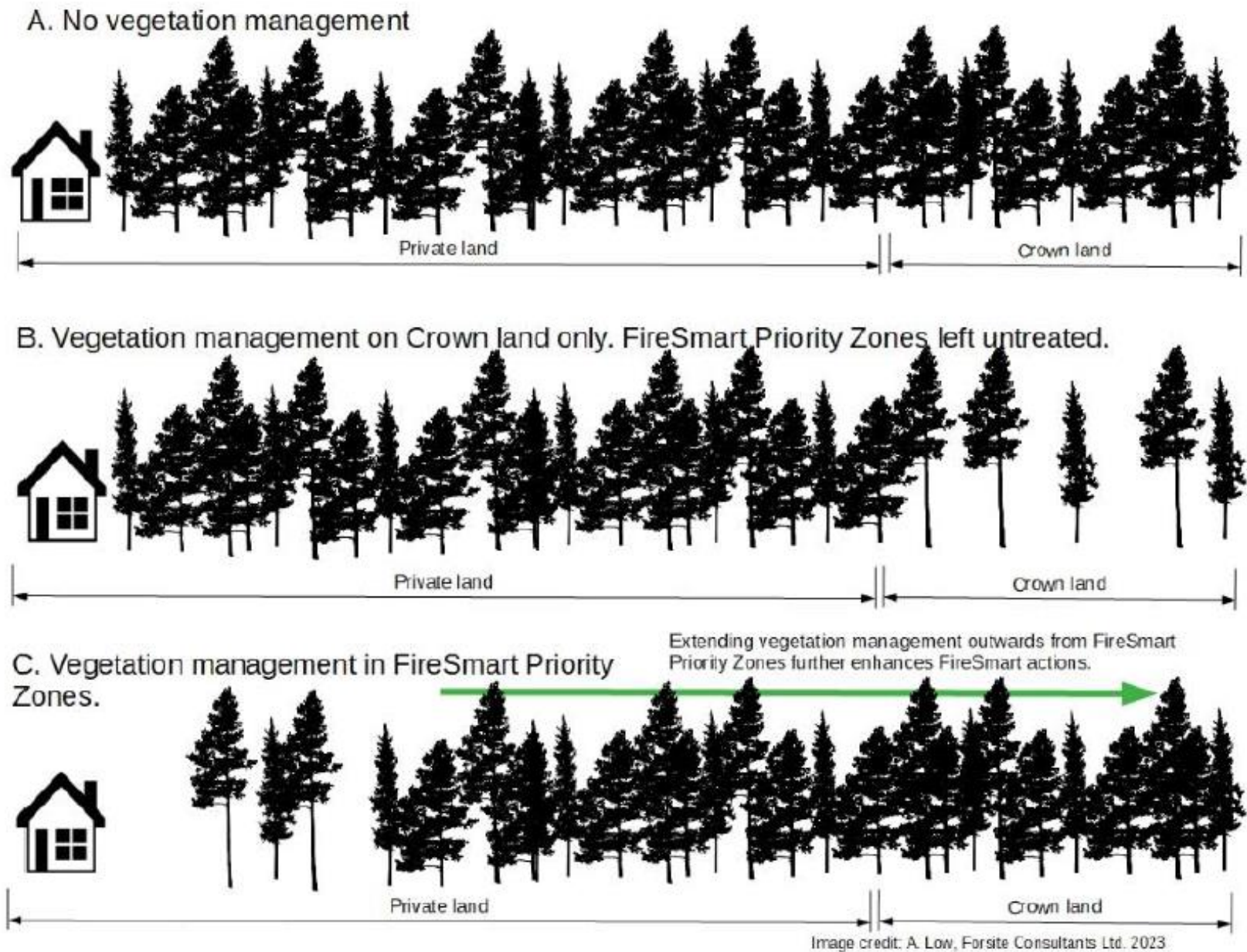


Figure 21 Vegetation management actions are most effective when they prioritize fuel hazard mitigation beginning in the FireSmart priority zones and progressing outwards.

Action Plan & Recommendations

- List of Action Items
 - Primarily focused on CRI funding
- Proposed Fuels Treatments (in progress)



Photo credit: Madison Hughes



Questions?



Andy Low, RPF

Senior Wildland Fire Specialist
Kamloops, BC

cell 778-220-7834



Hailey Sigalet, RPF

Fuel Management Specialist
Kamloops, BC

cell 778-678-4636