

Community Wildfire Resiliency Plan

**Thompson-Nicola Regional District Electoral
Area “O” (Lower North Thompson)**

Outline

- ① **Community Wildfire Resiliency Plan**
- ② **Community Description**
- ③ **Wildfire Risk Assessment**
- ④ **Seven FireSmart Disciplines**
- ⑤ **Action Plan & Recommendations**
- ⑥ **Questions**



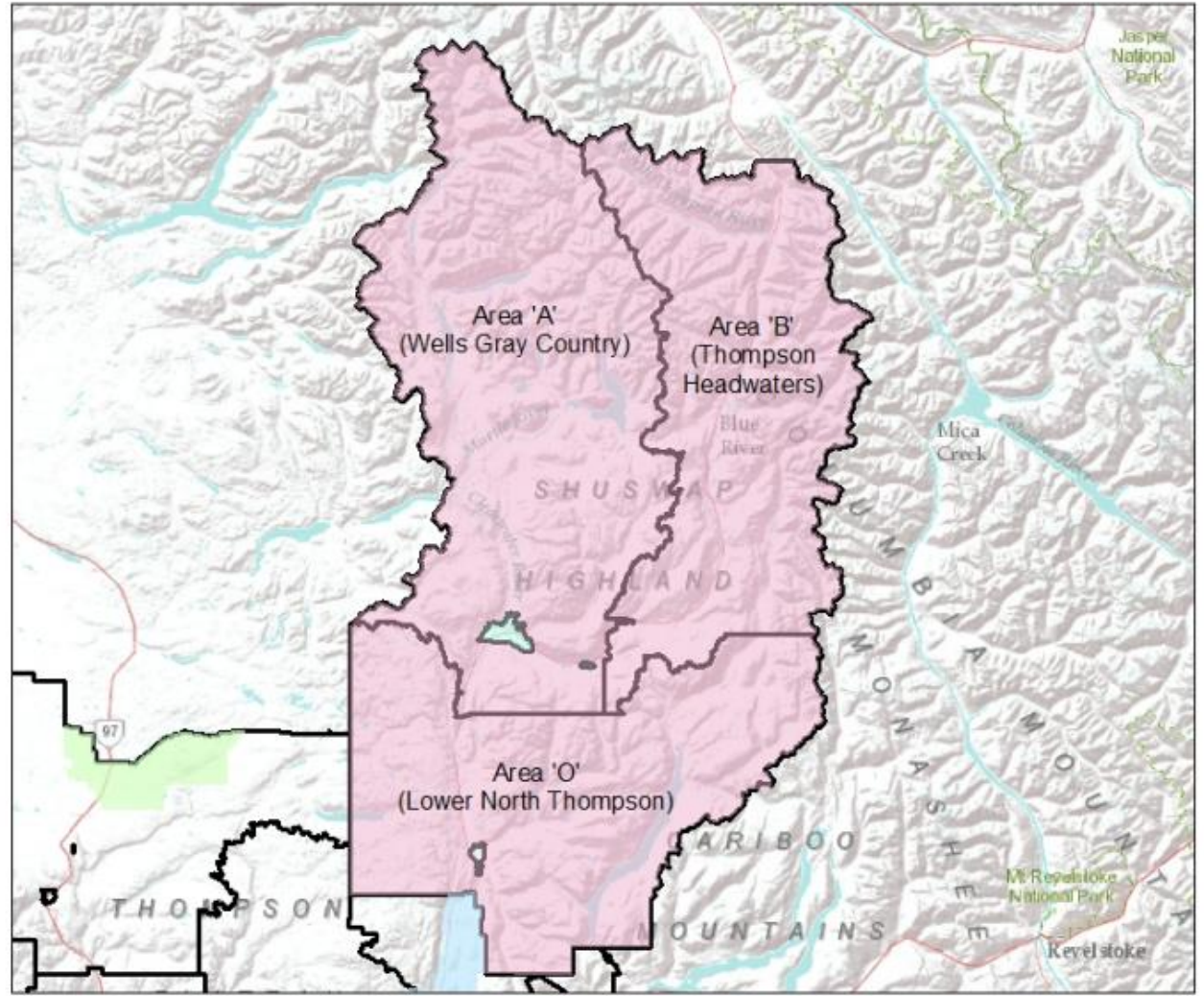
Community Wildfire Resiliency Plan

- High level plan
- Improve a community's wildfire preparedness
- Mitigate losses from possible wildfire
- Seven FireSmart principles
- Unlocks government funding sources



Photo credit: Madison Hughes

Community Description



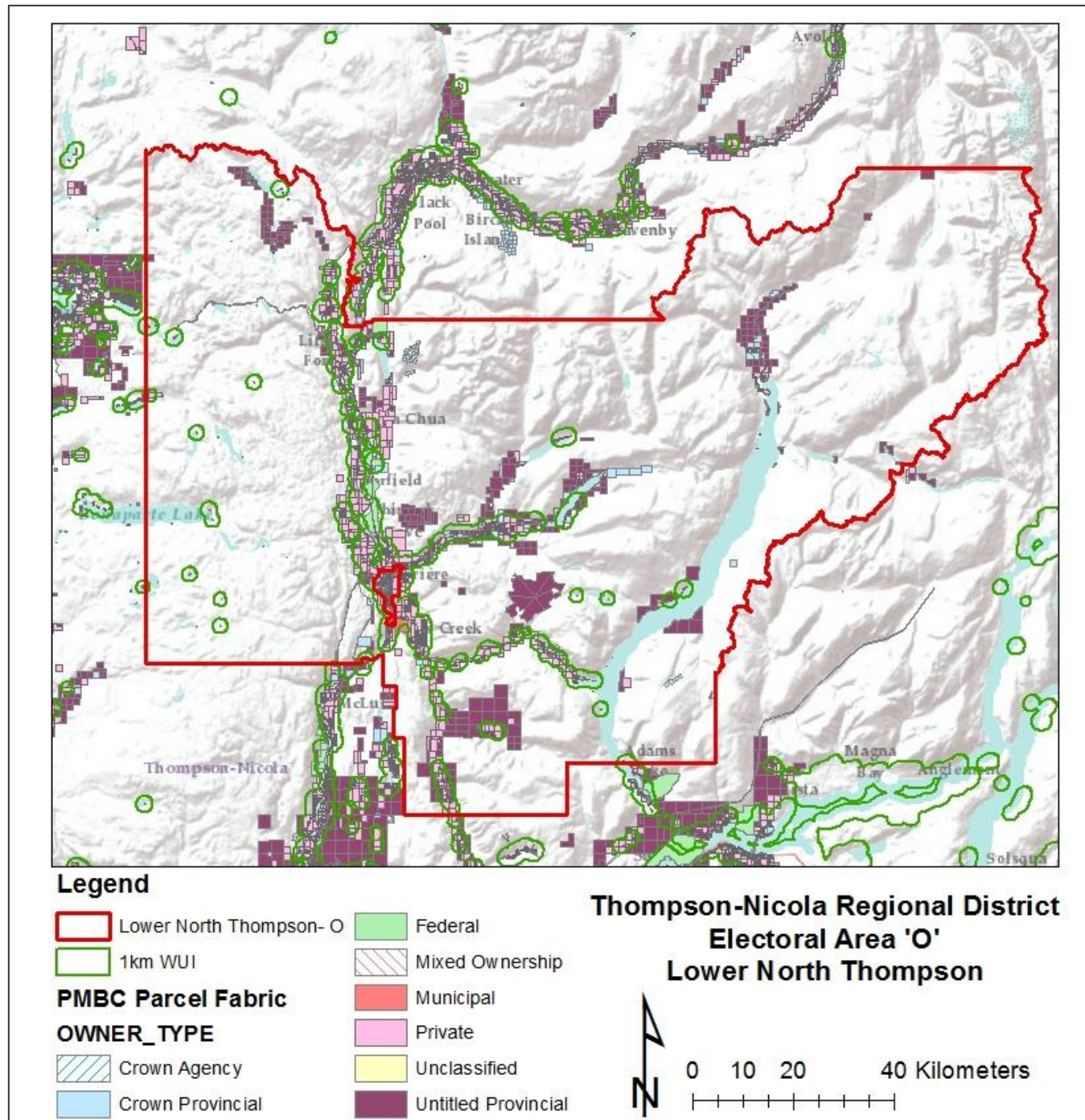
Legend

- North Thompson OCP
- District of Barriere OCP
- District of Clearwater OCP
- Green Lake and Area OCP
- Kamloops North OCP

Thompson-Nicola Regional District North Thompson Official Community Plan Area



Area of Interest



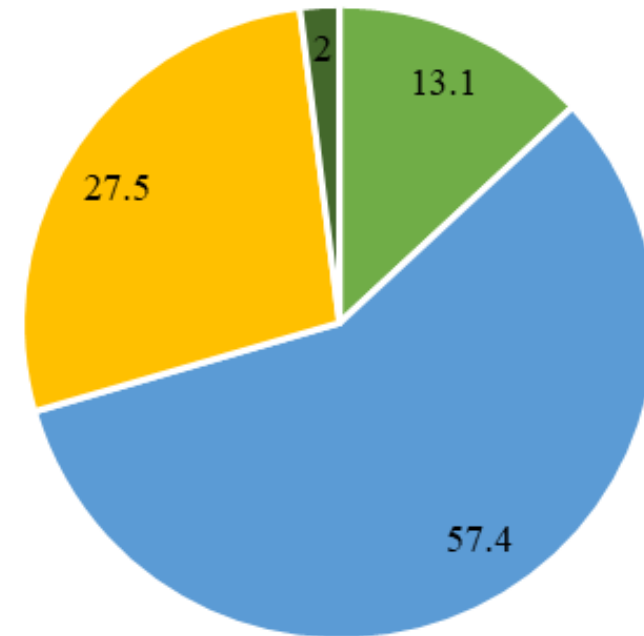
Community Description - Demographics

Total Population: 1,532 (2021)

Population Growth: 15.1% since 2016

- 0 to 14 years
- 15 to 64 years
- 65 to 84 years
- 85 years and over

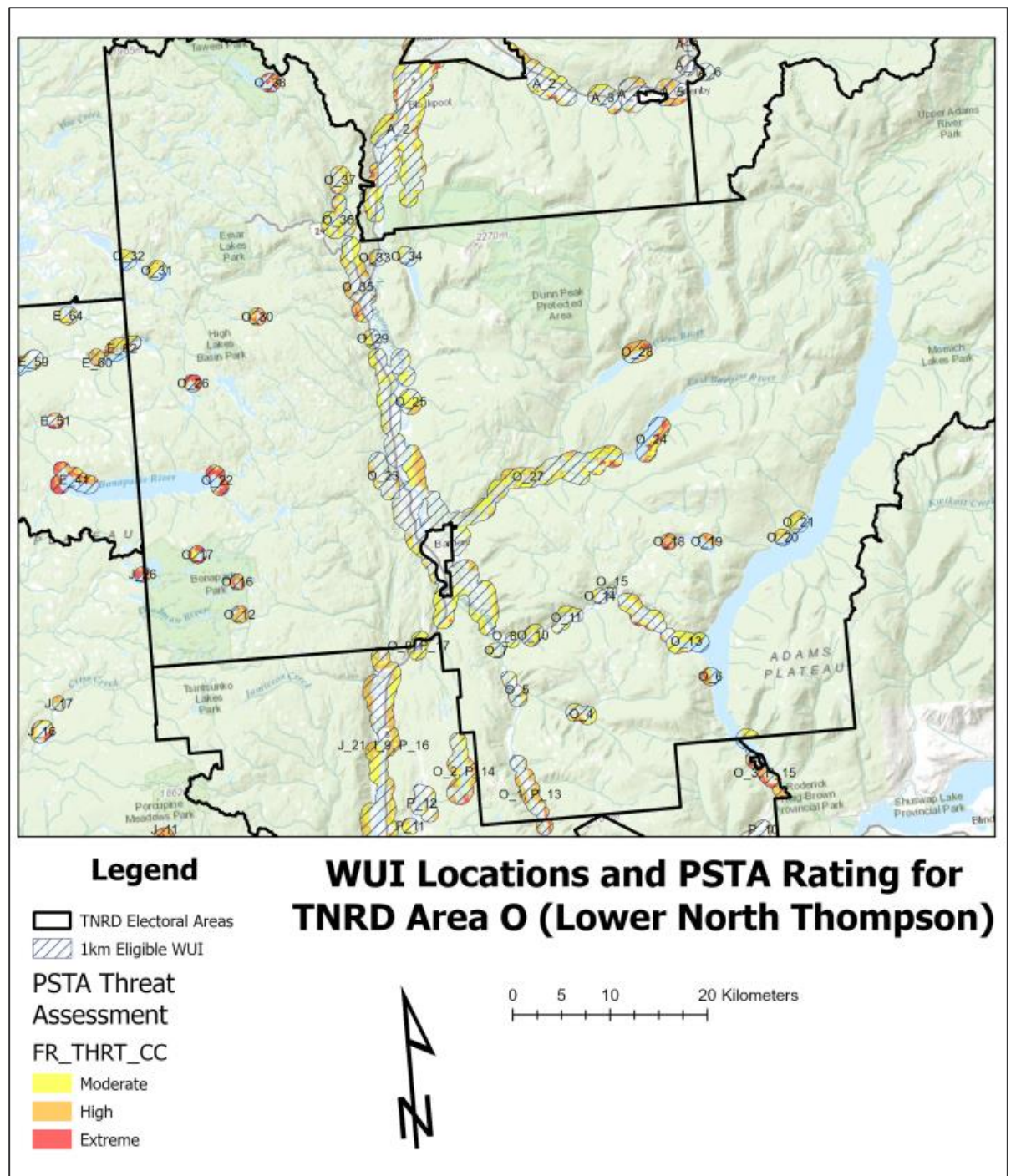
Lower North Thompson



Community Description - Land Ownership

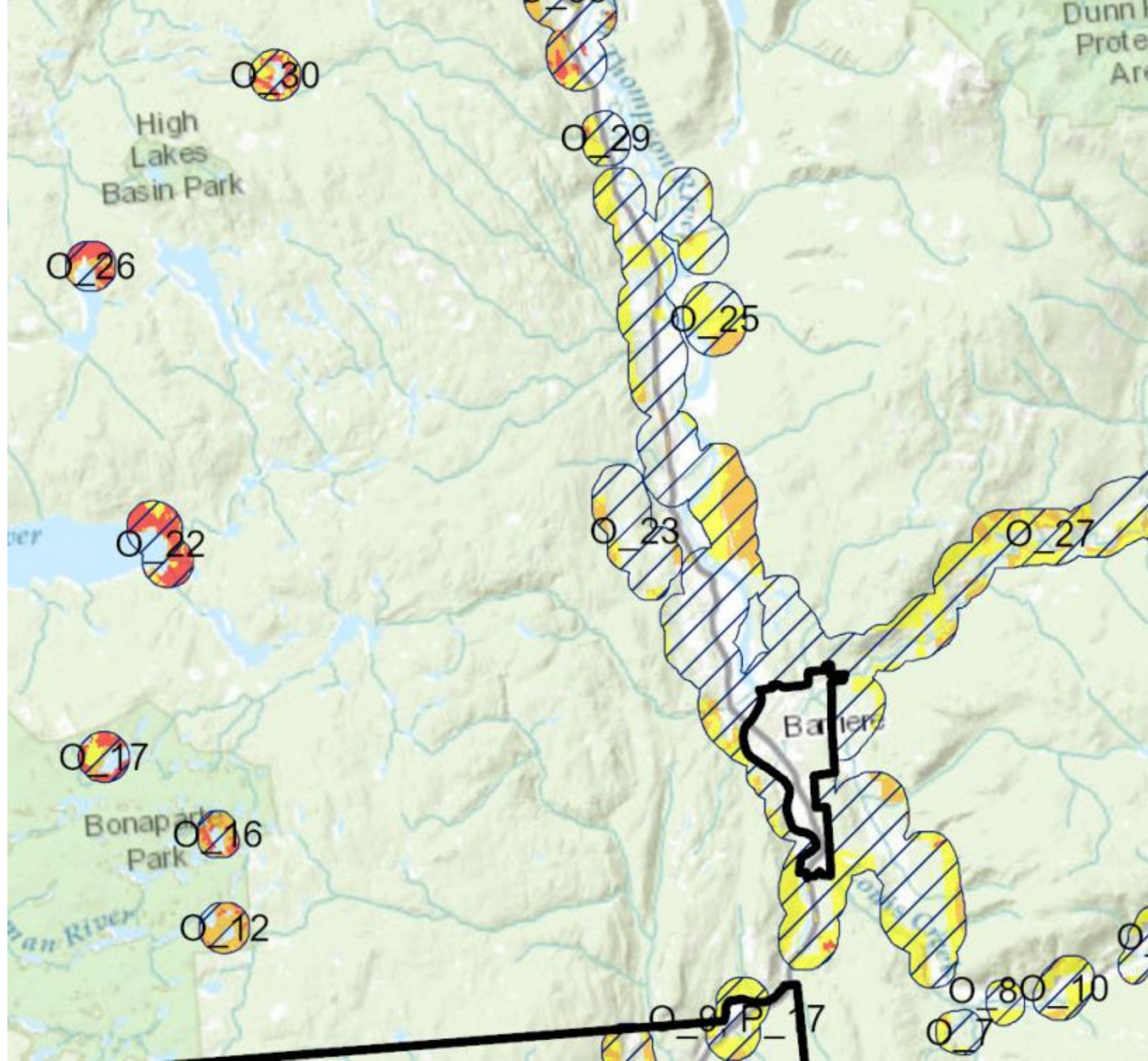
Owner Type	Area (ha) Total	%	Area (ha) in WUI	%
Untitled Provincial	24292.89	46.7%	2995.56	15.1%
Private	21932.14	42.2%	14614.16	73.8%
Crown Provincial	3775.79	7.3%	1062.75	5.4%
Federal	1530.41	2.9%	844.76	4.3%
Municipal	270.19	0.5%	185.69	0.9%
Unclassified	153.26	0.3%	32.05	0.2%
Crown Agency	68	0.1%	67.41	0.3%
Total	52022.68	100.0%	19802.38	100.0%

Wildfire Risk Assessment

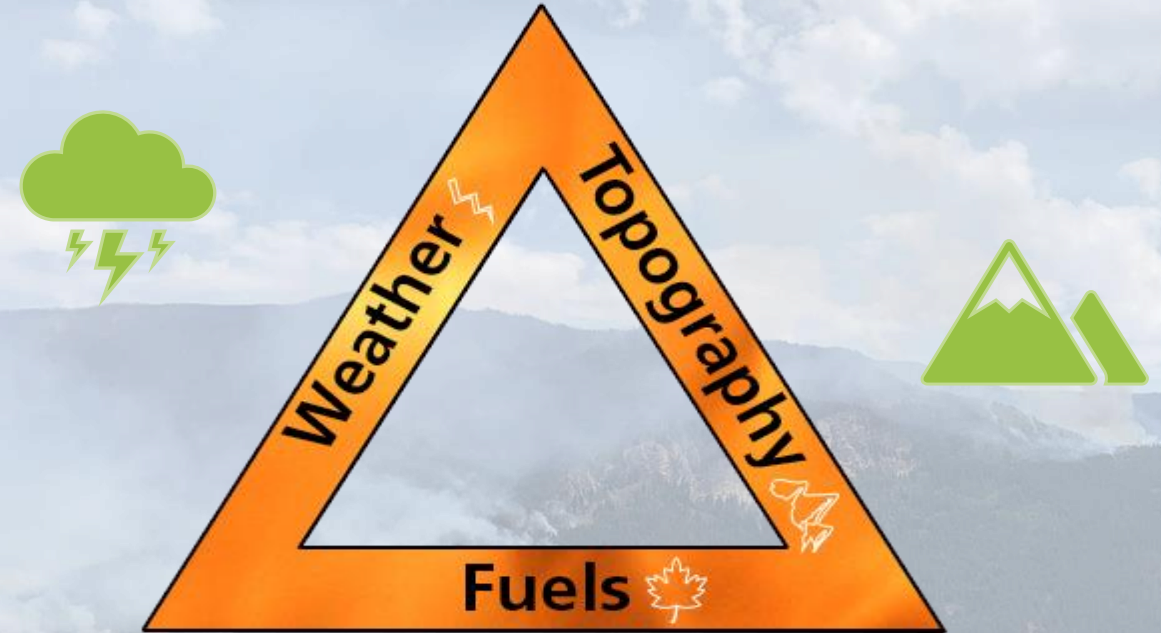


Wildfire Risk Assessment – “1km Eligible WUI”

WUI: *Wildland
Urban Interface*



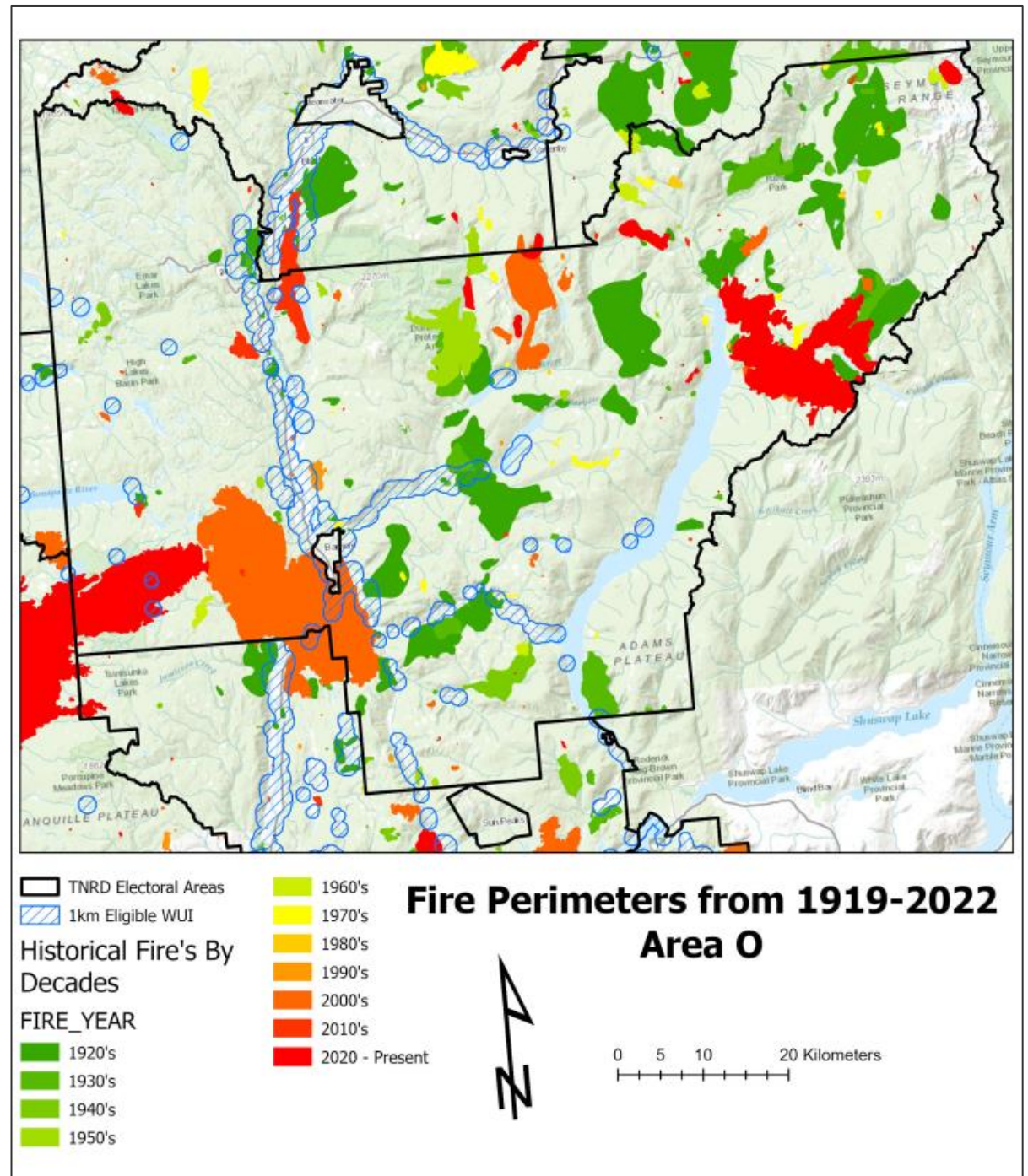
Wildfire Risk Assessment – The Fire Environment



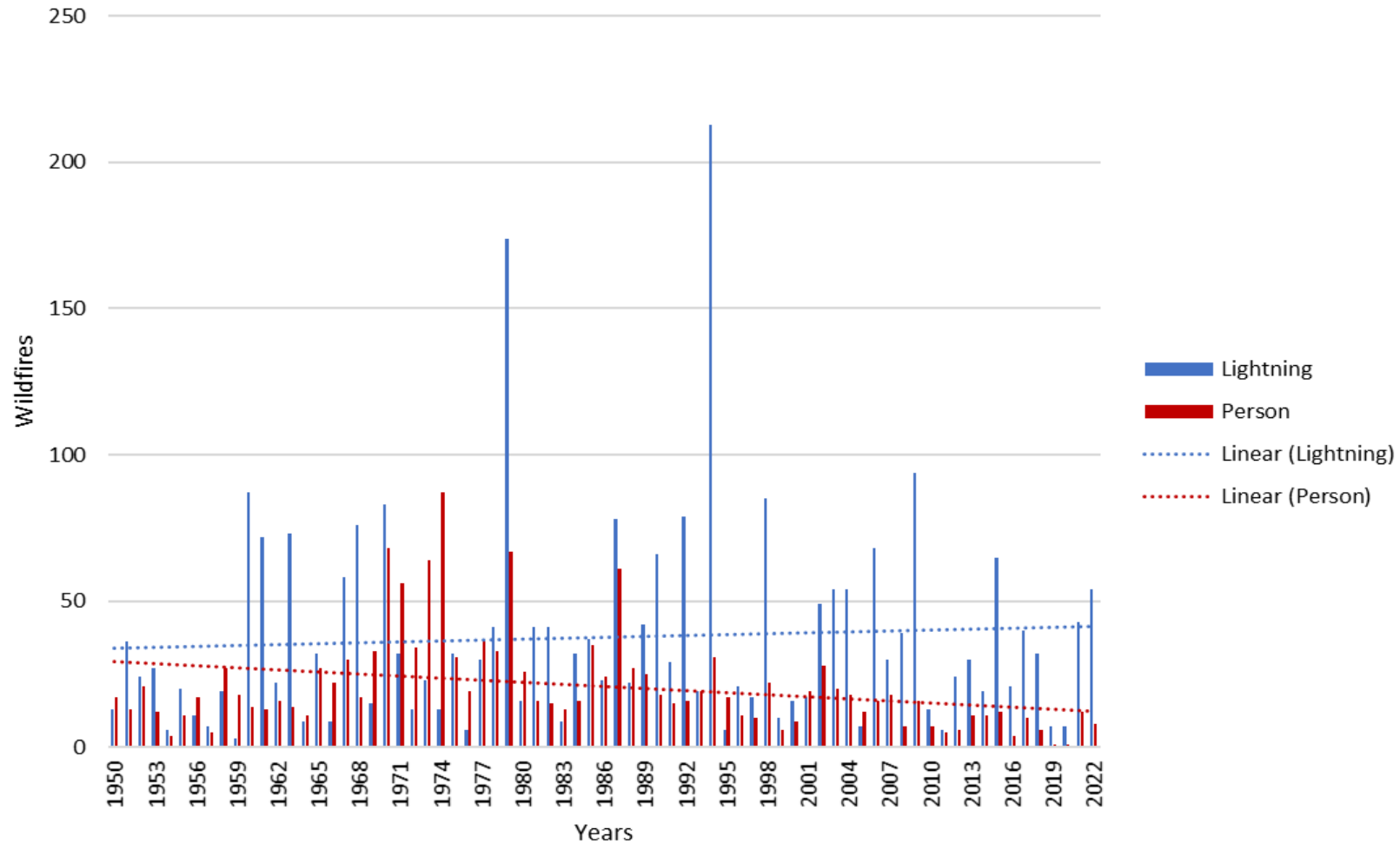
The fire triangle – interacting components that drive a wildfire.

Climate Variable	Season	Projected Change from 1961-1990 Baseline	
		Ensemble Median	Range (10th to 90th percentile)
Temperature (°C)	Annual	+3.2 °C	+2.2 °C to +4.2 °C
Precipitation (%)	Annual	2.60%	-0.53% to +8.8%
	Summer	1.10%	-25% to +7.8%
	Winter	1.80%	-1.5% to +8.0%
Precipitation as Snow (%)	Annual	-28%	-35% to -26%
	Winter	-20%	-25% to -15%
	Spring	-47%	-54% to -41%
Frost-Free Days (days)	Annual	+44 days	+34 to +63 days

Wildfire Risk Assessment – Fire History

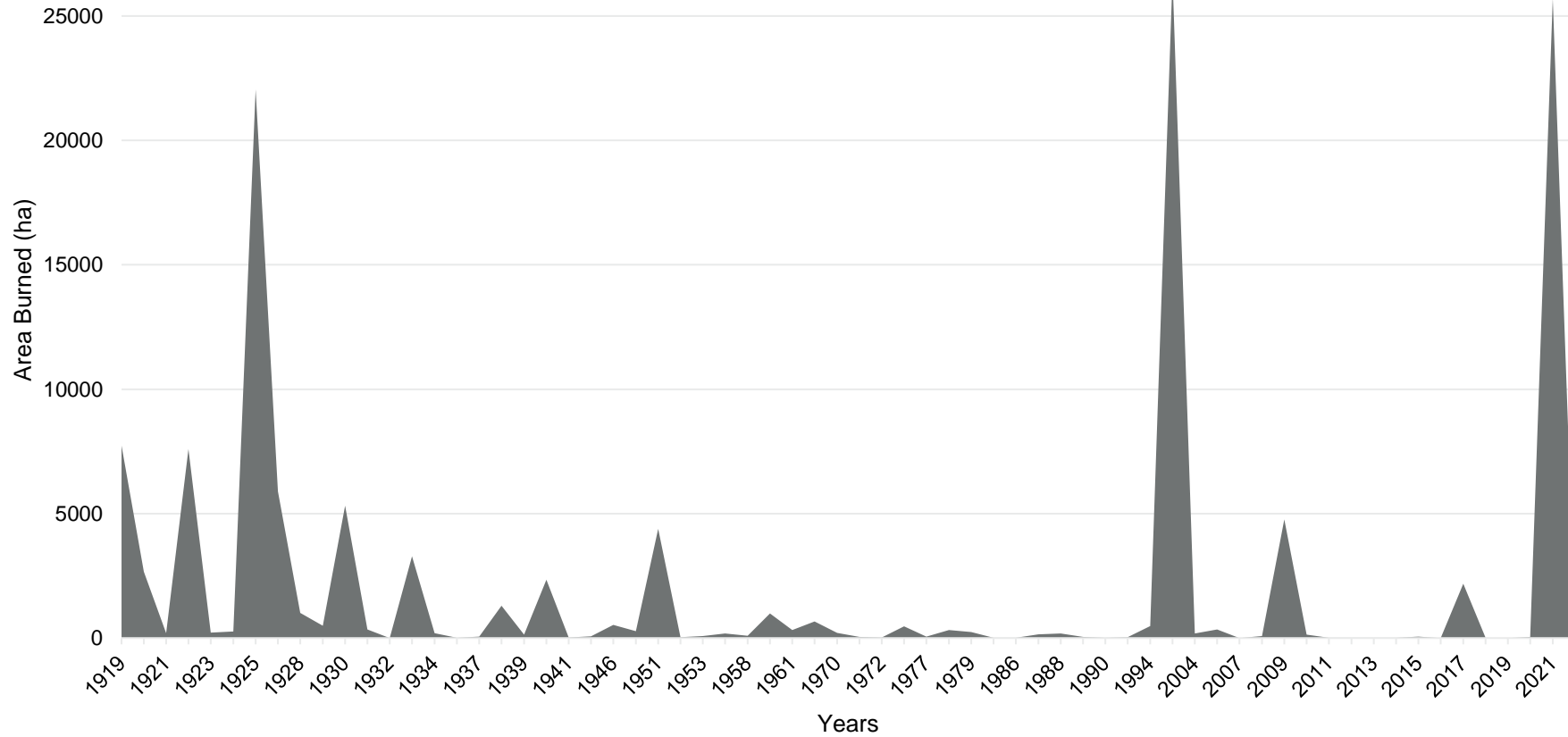


Wildfire History (1950 -2022)



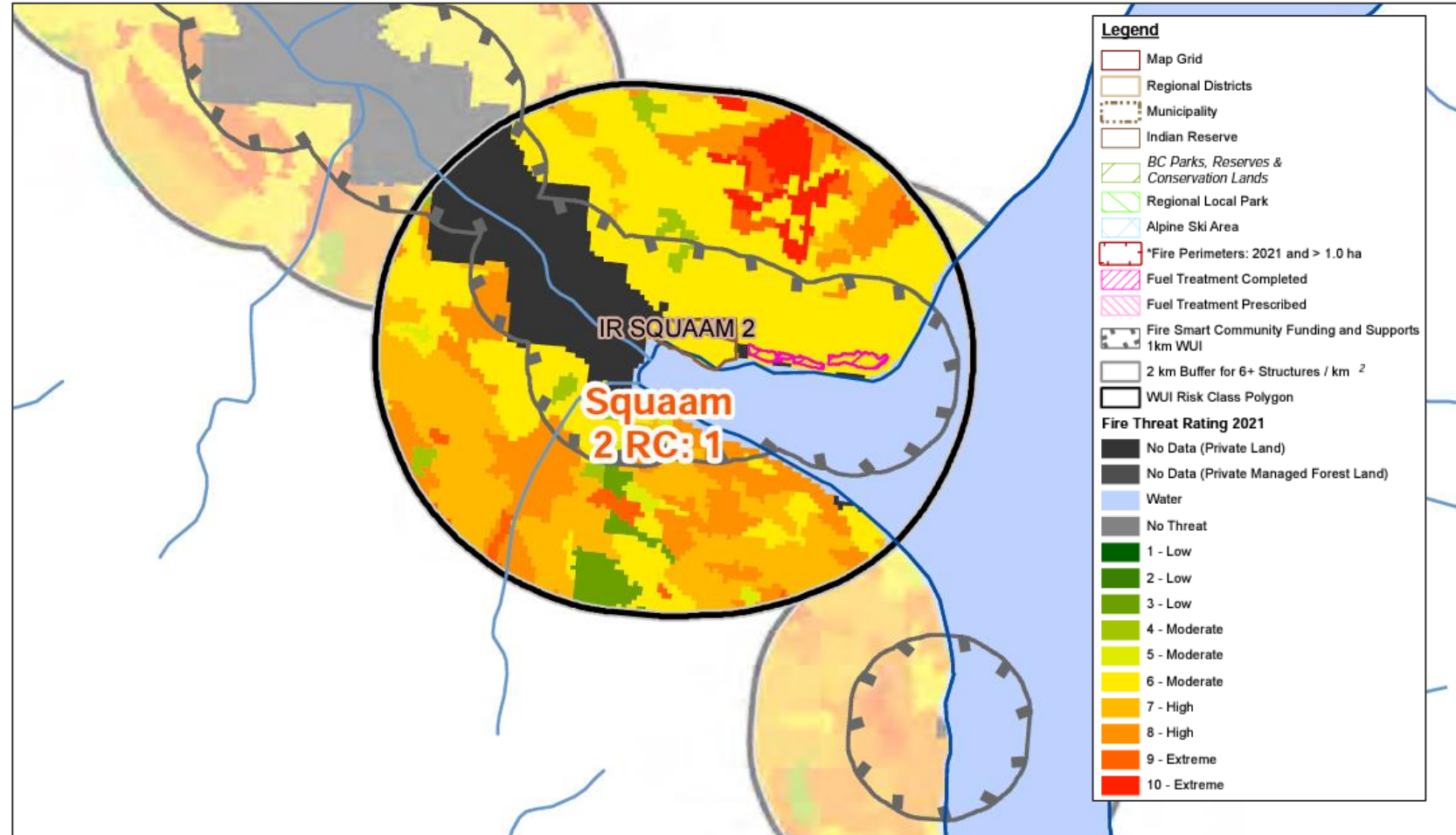
Annual wildfire occurrence within the Lower North Thompson electoral area boundary, from 1950 to 2022.

Area Burned (1919 -2022)



Area burned within the Lower North Thompson electoral area boundary, from 1919 to 2022.

Provincial Strategic Threat Assessment (PSTA)



Provincial Strategic Threat Assessment (PSTA)

PSTA Threat Rating	Area (ha)	%
No Data (Private Land)	14696.07675	46.1%
Moderate	7618.88284	23.9%
High	4117.022099	12.9%
Water	3545.965664	11.1%
Extreme	1537.548436	4.8%
Low	209.392135	0.7%
No Data (Private Managed Forest Land)	183.730206	0.6%
Total	31908.61813	100.0%

Within the
1km Eligible
WUI

PSTA Threat Rating	Area (ha)	%
High	189951.4238	33.5%
Extreme	174334.8096	30.8%
Moderate	141357.0149	25.0%
Water	28334.75956	5.0%
No Data (Private Land)	21720.25975	3.8%
Low	10368.22974	1.8%
No Data (Private Managed Forest Land)	478	0.1%
Total	566544.4973	100.0%

Across all the
Lower North
Thompson

Seven FireSmart Disciplines

TOGETHER WE ARE PREPARED



Seven FireSmart Disciplines



Vegetation Management



Goal:

- Reduce intensity and spread of wildfire
- Two levels:
 - Residential
 - Landscape

Vegetation Management



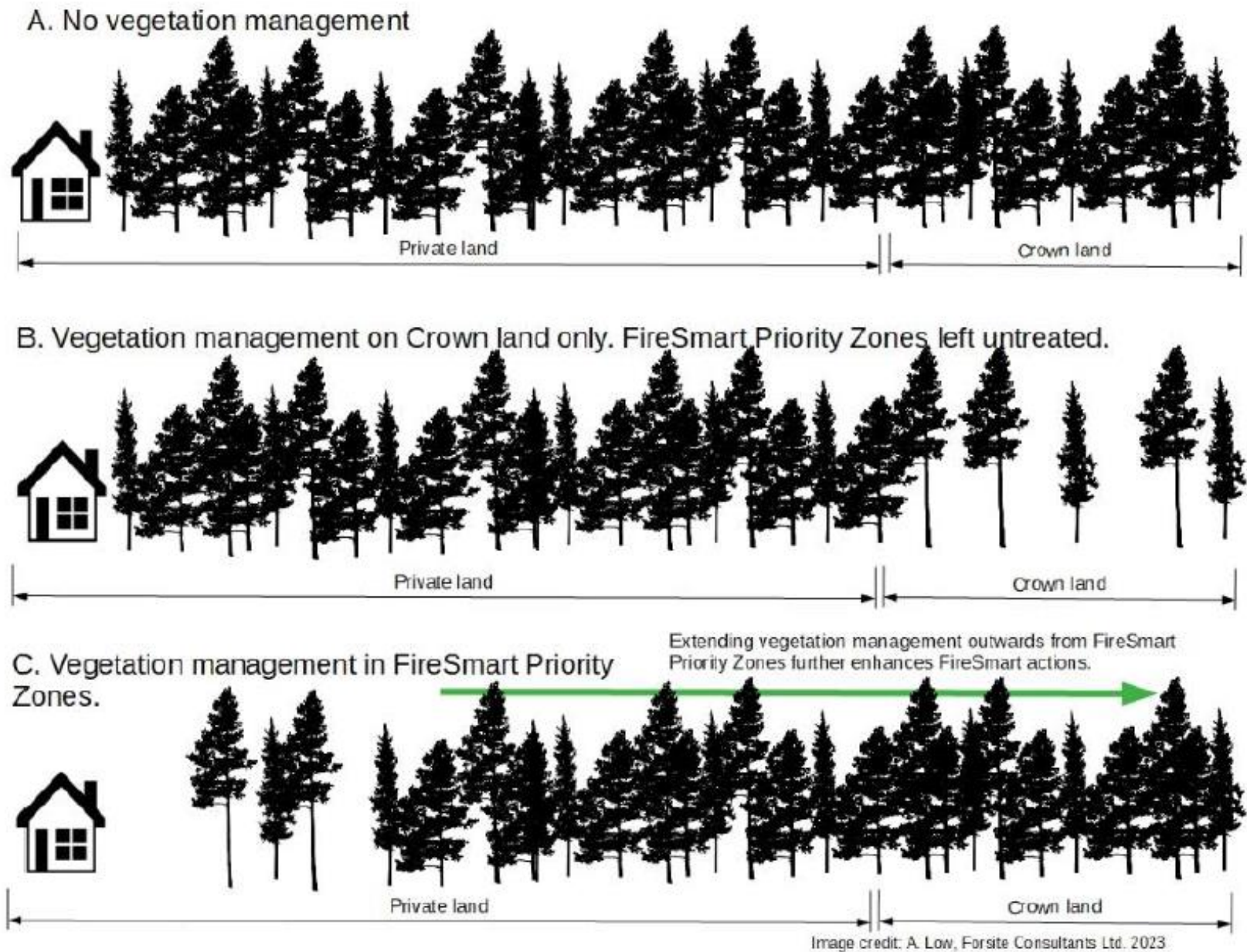


Figure 21 Vegetation management actions are most effective when they prioritize fuel hazard mitigation beginning in the FireSmart priority zones and progressing outwards.

Action Plan & Recommendations

- List of Action Items
 - Primarily focused on CRI funding
- Proposed Fuels Treatments (in progress)





Photo credit: Hailey Sigalet

Questions?



Andy Low, RPF

Senior Wildland Fire Specialist
Kamloops, BC

cell 778-220-7834



Hailey Sigalet, RPF

Fuel Management Specialist
Kamloops, BC

cell 778-678-4636