

Community Wildfire Resiliency Plan

**Thompson-Nicola Regional District Electoral
Area “P” (Rivers and Peaks)**

Outline

- ① **Community Wildfire Resiliency Plan**
- ② **Community Description**
- ③ **Wildfire Risk Assessment**
- ④ **Seven FireSmart Disciplines**
- ⑤ **Action Plan & Recommendations**
- ⑥ **Questions**



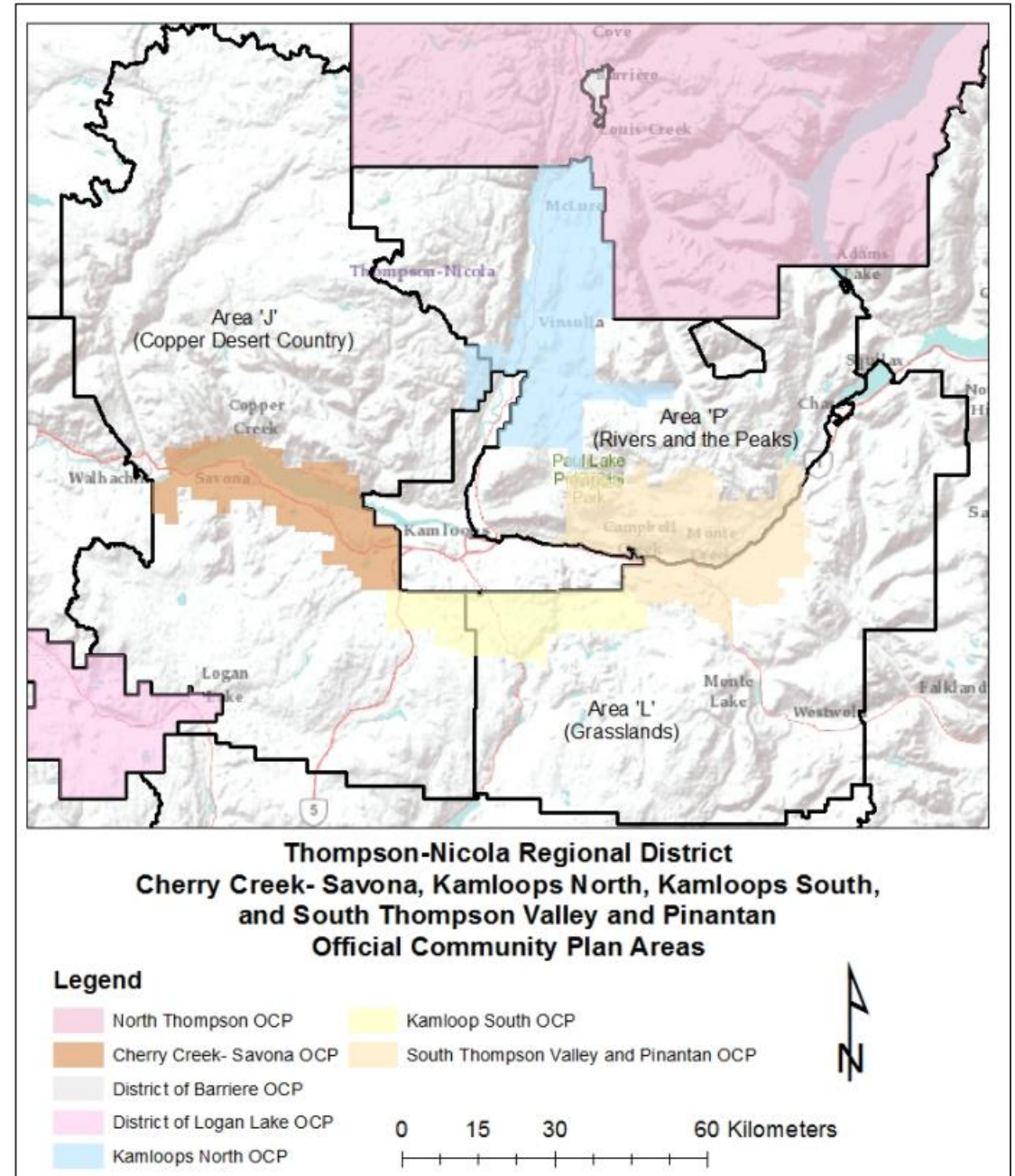
Community Wildfire Resiliency Plan

- High level plan
- Improve a community's wildfire preparedness
- Mitigate losses from possible wildfire
- Seven FireSmart principles
- Unlocks government funding sources

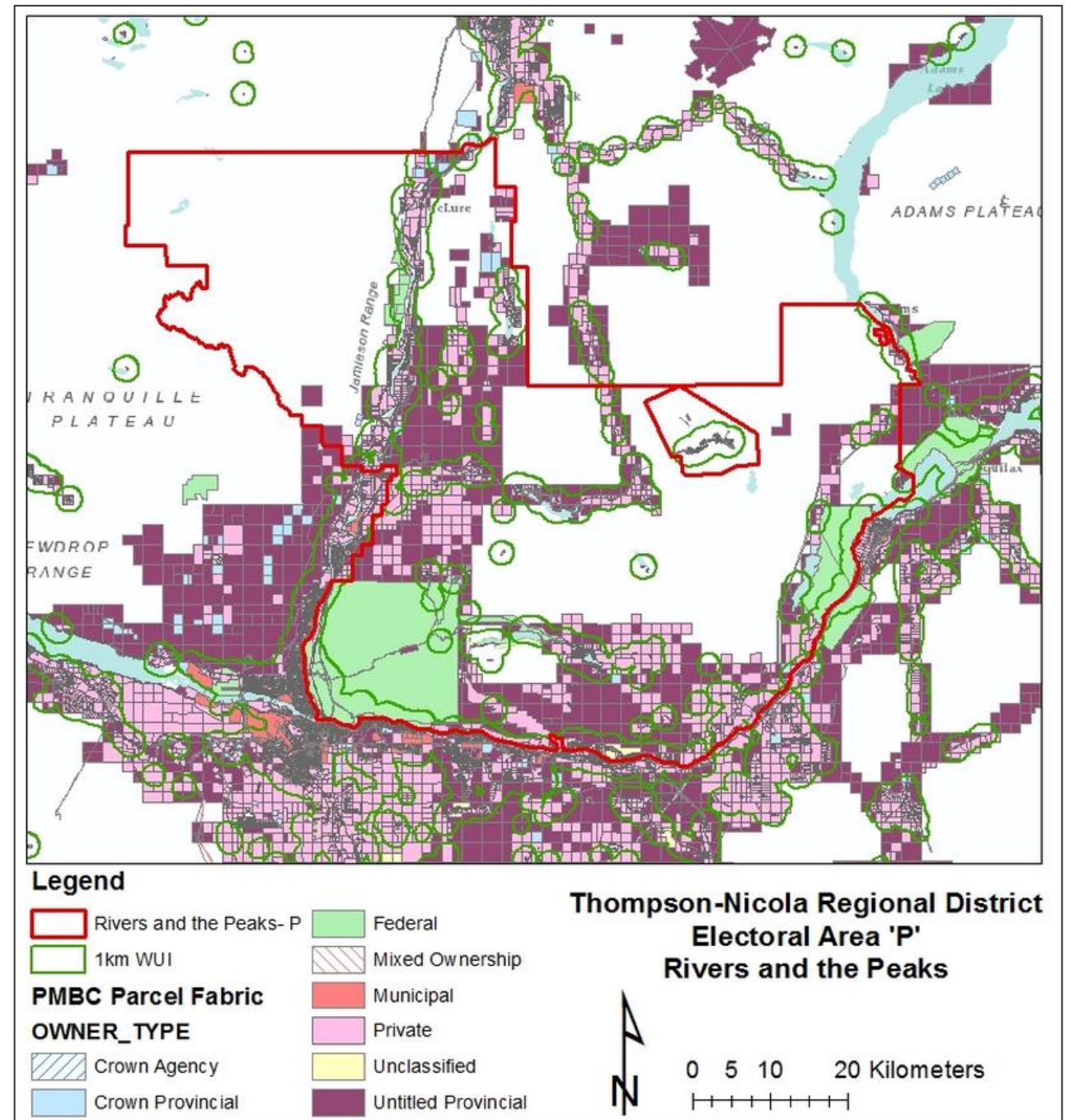


Photo credit: Madison Hughes

Community Description



Area of Interest



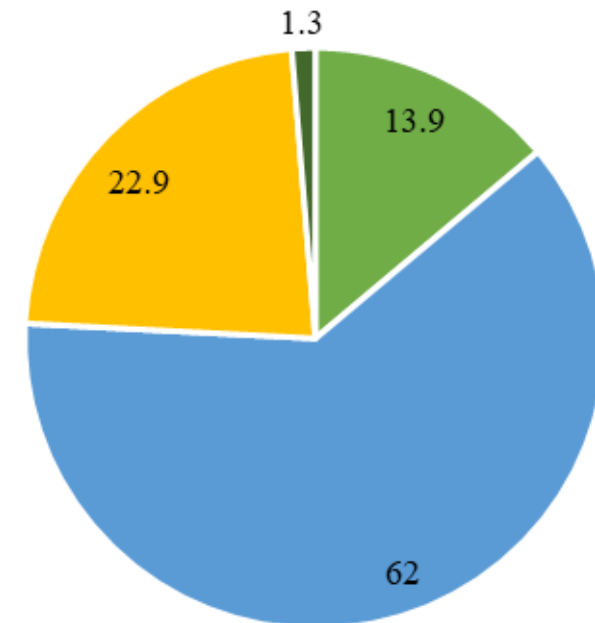
Community Description - Demographics

Total Population: 4,098 (2021)

Population Growth: 11.6% since 2016

- 0 to 14 years
- 15 to 64 years
- 65 to 84 years
- 85 years and over

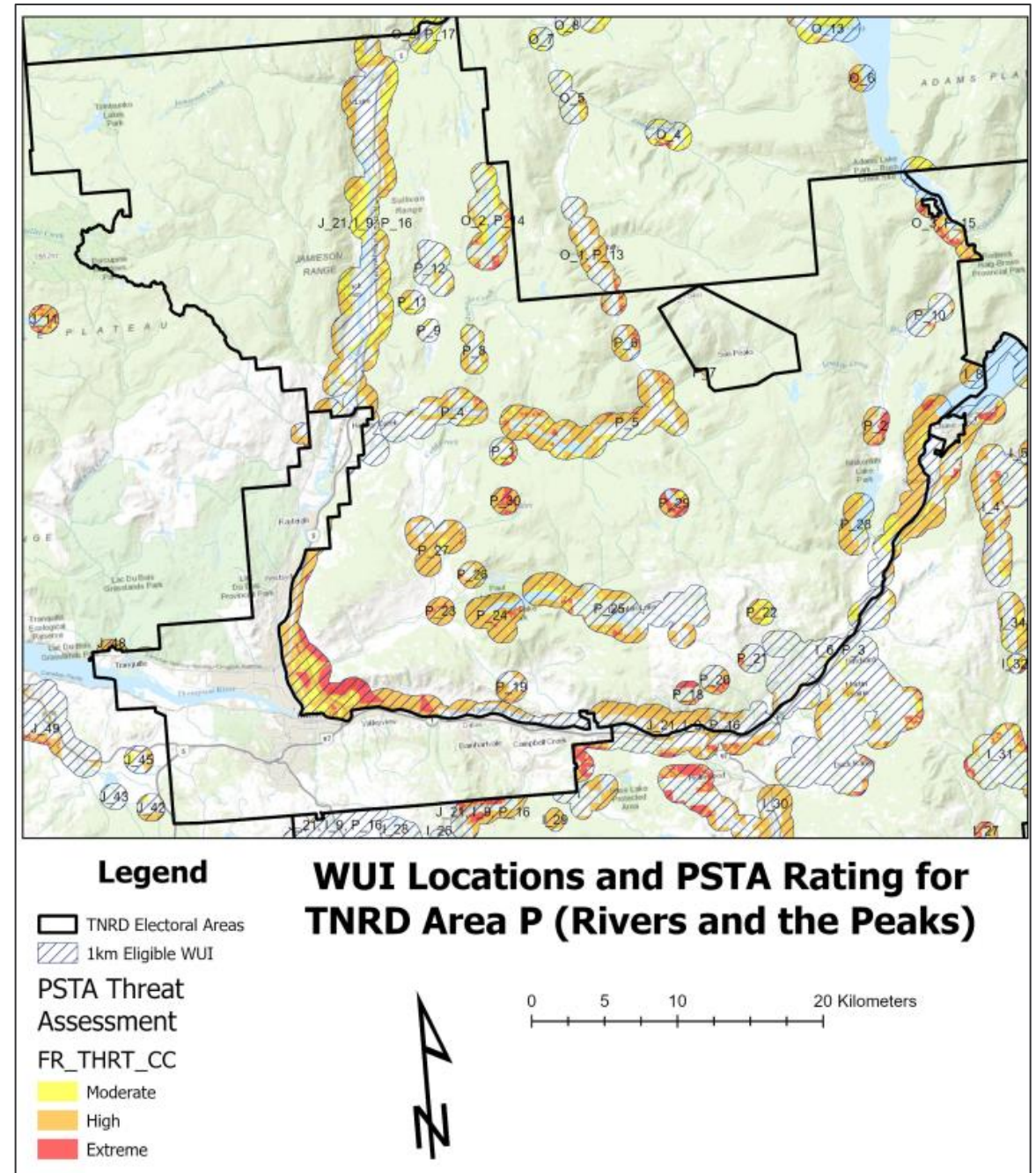
Rivers and the Peaks



Community Description - Land Ownership

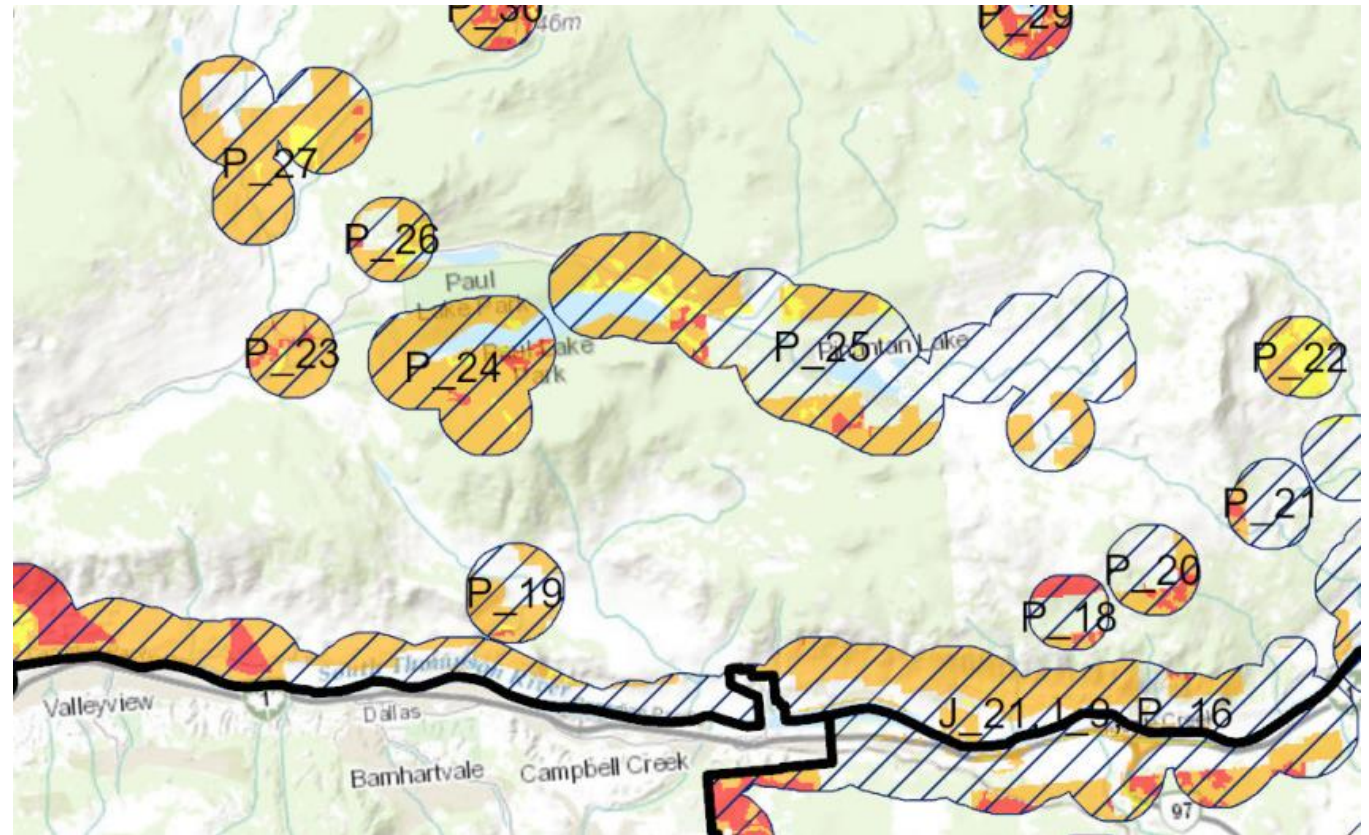
Owner Type	Area (ha) Total	%	Area (ha) in WUI	%
Private	25963.95	35.1%	14897.96	50.9%
Federal	16933.05	22.9%	5662.57	19.3%
Untitled Provincial	29444.1	39.8%	7907.85	27.0%
Crown Provincial	1293.63	1.7%	456.49	1.6%
Unclassified	252.76	0.3%	252.76	0.9%
Crown Agency	116.91	0.2%	91.01	0.3%
Municipal	7.1	0.01%	5.54	0.02%
Mixed Ownership	0.19	0.0003%	0.19	0.001%
Total	37706.61	100.0%	29274.37	100.0%

Wildfire Risk Assessment

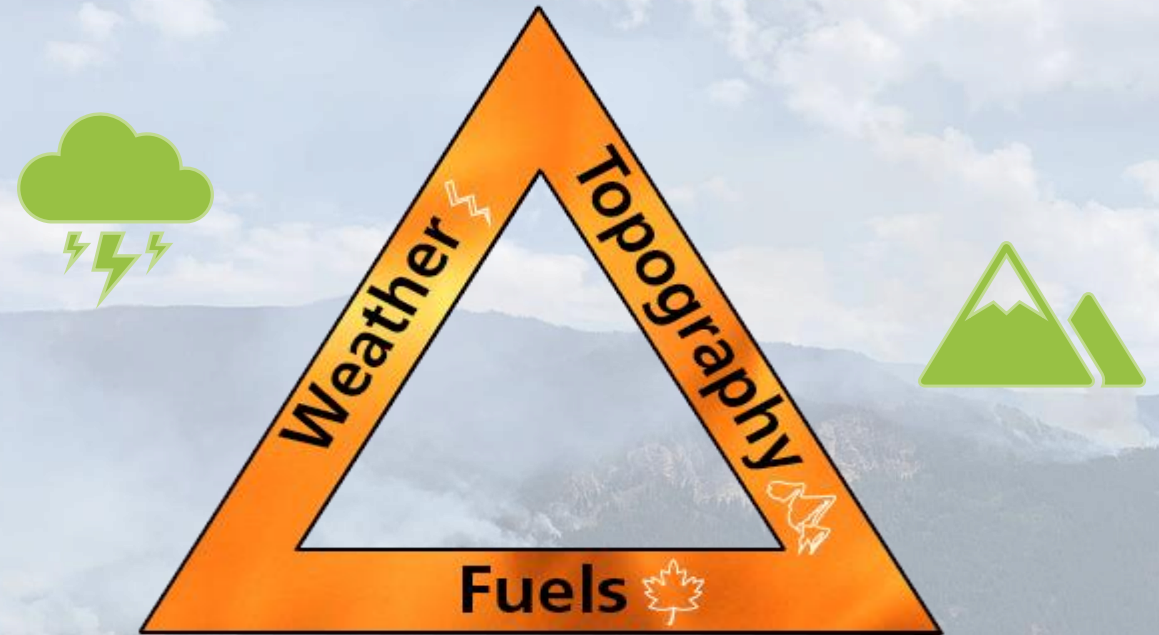


Wildfire Risk Assessment – “1km Eligible WUI”

WUI: *Wildland
Urban Interface*



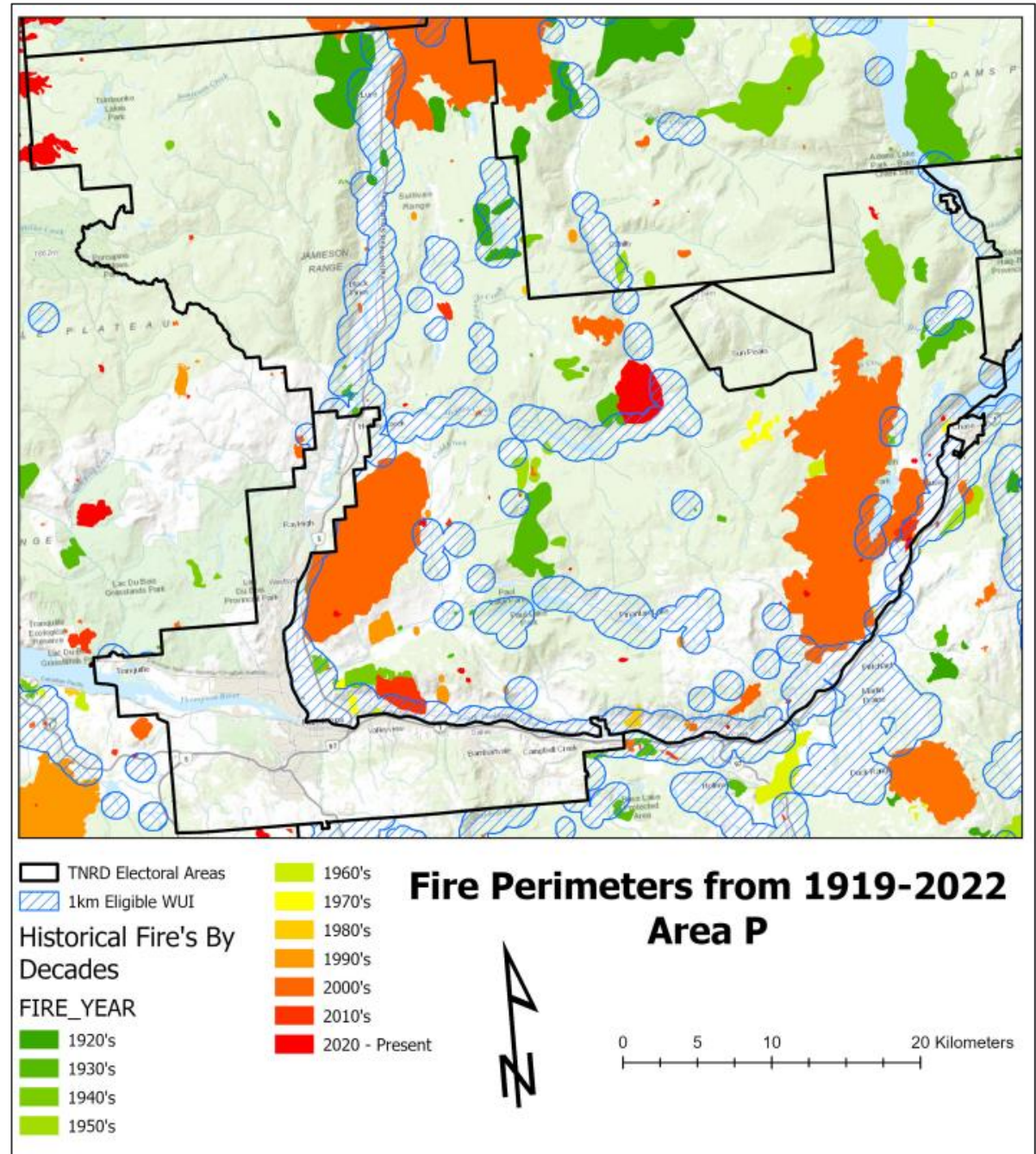
Wildfire Risk Assessment – The Fire Environment



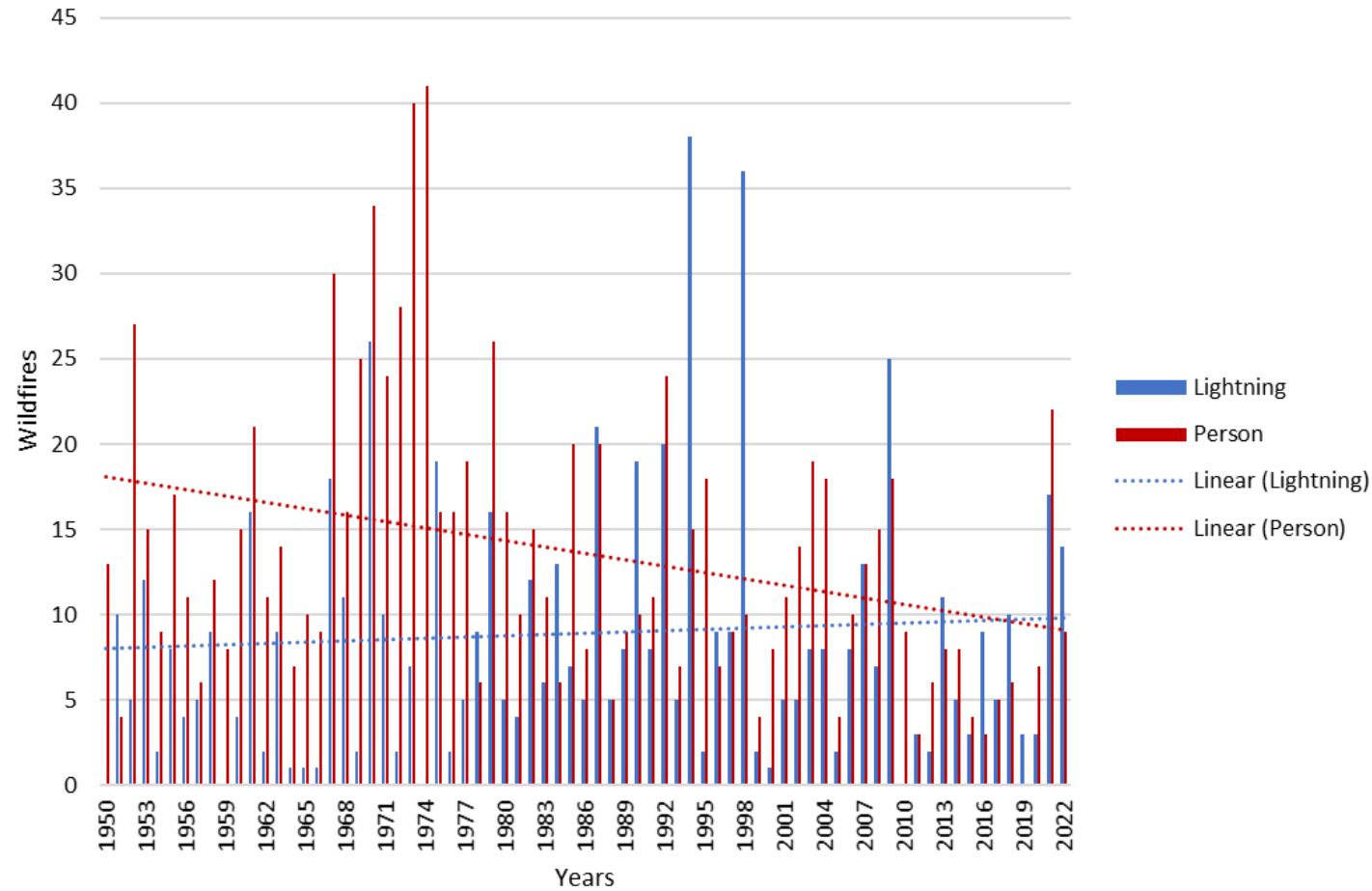
The fire triangle – interacting components that drive a wildfire.

Climate Variable	Season	Projected Change from 1961-1990 Baseline	
		Ensemble Median	Range (10th to 90th percentile)
Temperature (°C)	Annual	+3.2 °C	+2.2 °C to +4.2 °C
Precipitation (%)	Annual	2.60%	-0.53% to +8.8%
	Summer	1.10%	-25% to +7.8%
	Winter	1.80%	-1.5% to +8.0%
Precipitation as Snow (%)	Annual	-28%	-35% to -26%
	Winter	-20%	-25% to -15%
	Spring	-47%	-54% to -41%
Frost-Free Days (days)	Annual	+44 days	+34 to +63 days

Wildfire Risk Assessment – Fire History

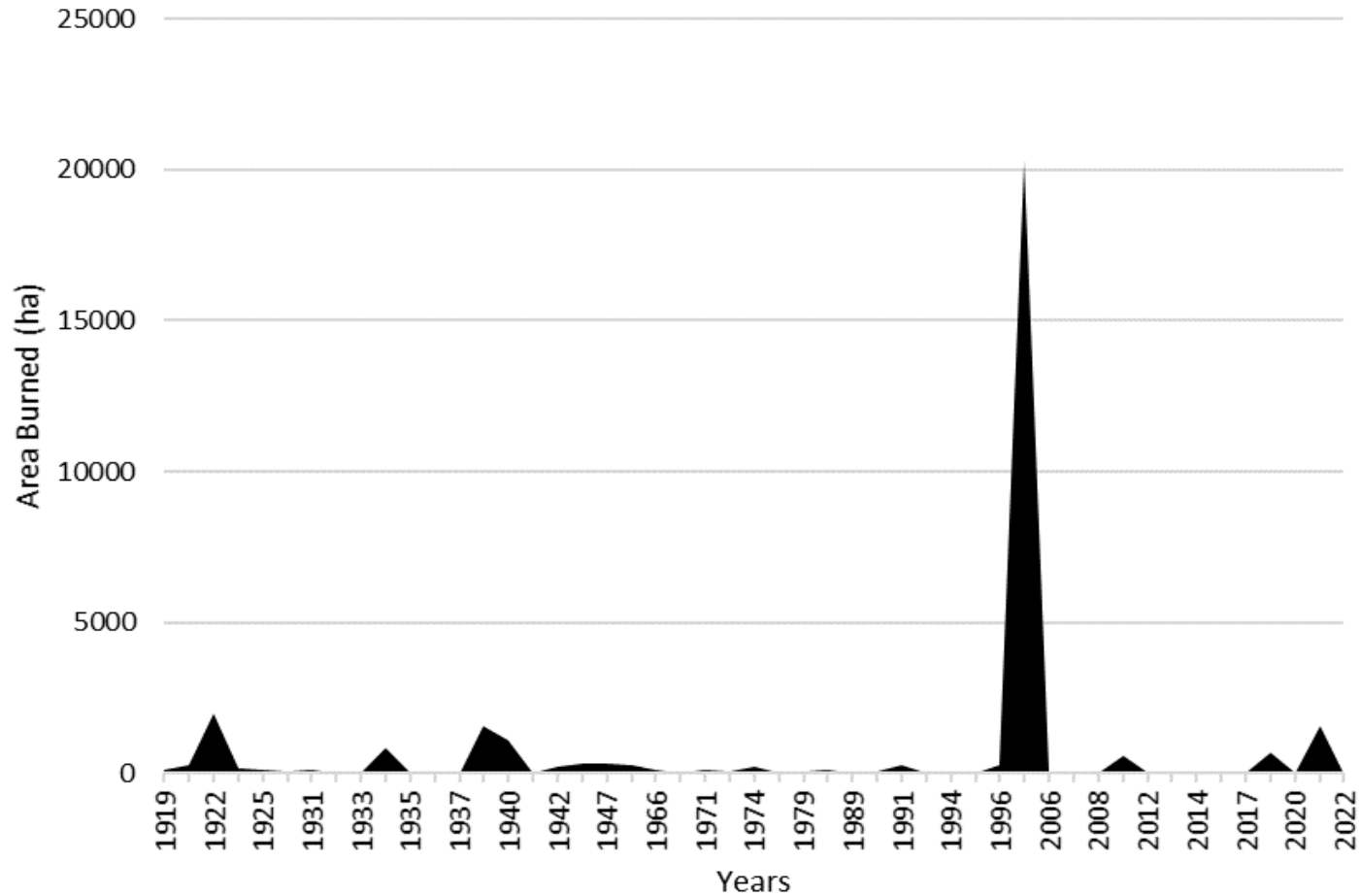


Wildfire History (1950 -2022)



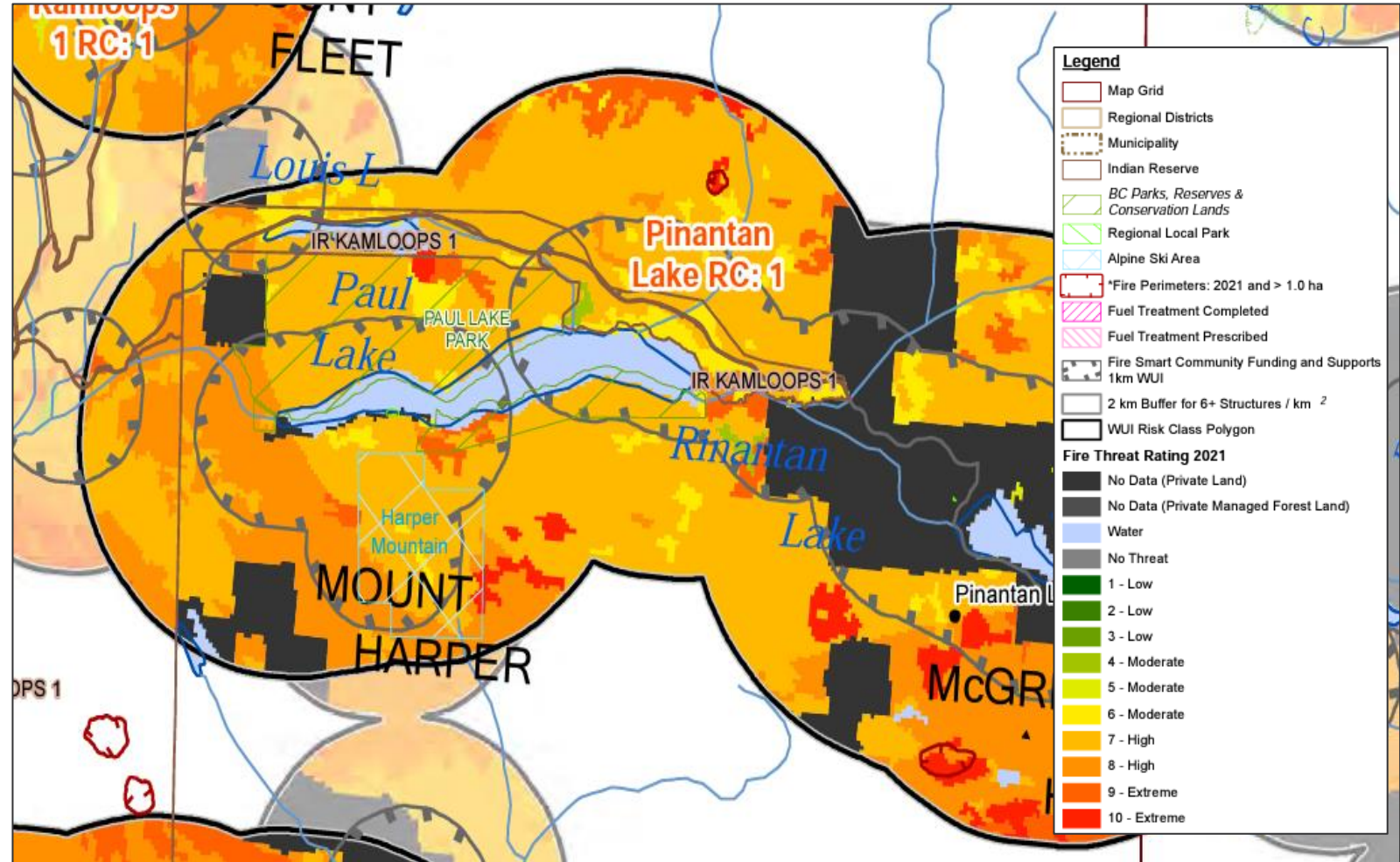
Annual wildfire occurrence within the Rivers and Peaks electoral area boundary, from 1950 to 2022.

Area Burned (1919 -2022)



Area burned within the Rivers and Peaks electoral area boundary, from 1919 to 2022.

Provincial Strategic Threat Assessment (PSTA)



Provincial Strategic Threat Assessment (PSTA)

PSTA Threat Rating	Area (ha)	%
No Data (Private Land)	15131.94164	40.1%
High	13373.77833	35.4%
Moderate	4050.663085	10.7%
Water	3116.303718	8.3%
Extreme	1935.837717	5.1%
Low	157.670987	0.4%
Total	37766.19548	100.0%

Within the 1km Eligible WUI.

PSTA Threat Rating	Area (ha)	%
High	87040.08737	49.1%
Extreme	34172.17797	19.3%
No Data (Private Land)	26210.30372	14.8%
Moderate	23688.76468	13.4%
Water	4844.891745	2.7%
Low	1211.619494	0.7%
Total	177167.845	100.0%

Across all Rivers and Peaks electoral area.

Seven FireSmart Disciplines

TOGETHER WE ARE PREPARED



Seven FireSmart Disciplines



Vegetation Management



Goal:

- Reduce intensity and spread of wildfire
- Two levels:
 - Residential
 - Landscape

Vegetation Management



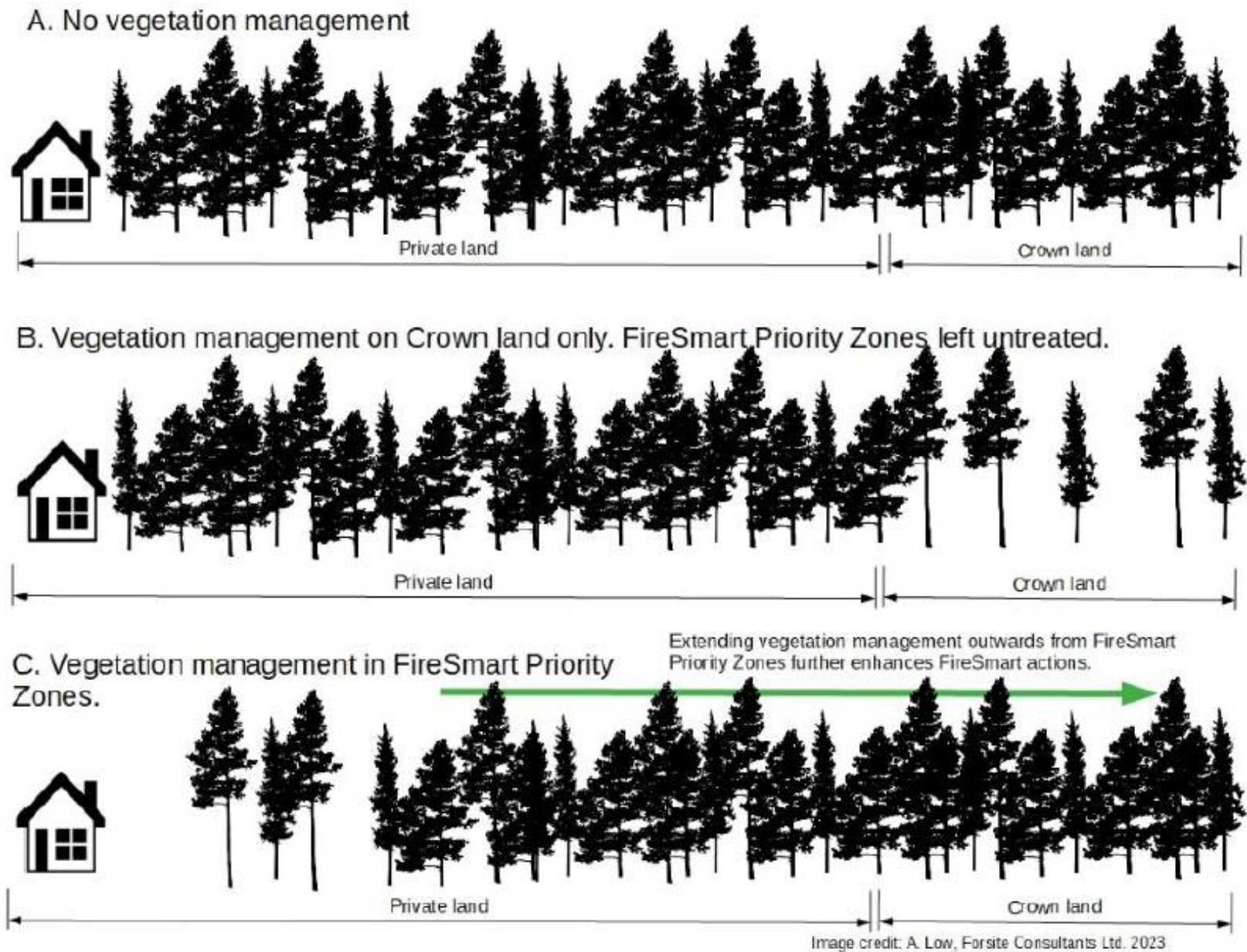


Figure 21 Vegetation management actions are most effective when they prioritize fuel hazard mitigation beginning in the FireSmart priority zones and progressing outwards.

Action Plan & Recommendations

- List of Action Items
 - Primarily focused on CRI funding
- Proposed Fuels Treatments (in progress)





Questions?



Andy Low, RPF

Senior Wildland Fire Specialist
Kamloops, BC

cell 778-220-7834



Hailey Sigalet, RPF

Fuel Management Specialist
Kamloops, BC

cell 778-678-4636