

Thompson-Nicola INVASIVE PLANT management committee

Operational Plan for Terrestrial Invasive
Plants in the Thompson-Nicola Region

January 2024

TABLE OF CONTENTS

Introduction.....	Page 2
Why Care	Page 3
About the TNIPMC.....	Page 4
Criteria for Prioritizing Invasive Species Management Activities	Page 5
Invasive plant Categories & Management Objectives	Page 6
Invasive Plant Lists	Page 8
Monitoring Progress	Page 8
Appendix I- Regional Priority Invasive Plant List	Page 10
Appendix II- Regional Containment Areas	Page 35
Appendix III- Additional Invasive Plants in the Thompson-Nicola Region	Page 50
Appendix IV- Printable Summary Sheet	Page 54

ACKNOWLEDGEMENTS

The Thompson-Nicola Invasive Plant Management Committee would like to extend gratitude to the Technical Advisory Committee whom guided the original development of this plan:

- Ashli Oe- Spectrum Resource Group
- Coleen Hougen- Thompson Nicola Regional District
- Derek Hogan- Ministry of Forests
- Grahame Gielens- Ministry of Transportation & Infrastructure
- Jollee Perrier- Thompson-Nicola Regional District
- Kirsten Wourms- City of Kamloops
- Mike Dedels- Grasslands Conservation Council of BC
- Robson Rogan- Purity Feed Inc
- Ryan Comeau- Purity Feed Inc
- Sarah Bayliff- Nature Conservancy of Canada
- Sheryl Wurtz- Ministry of Forests
- Stephanie Russell- Ministry of Environment & Climate Changes Strategy



INTRODUCTION

This regional operational plan acts as a guiding document for invasive plant management throughout the Thompson-Nicola Region and reflects local priorities for invasive plant management.

It provides a common approach to managing invasive plants with a goal of coordinating invasive plant management practices across jurisdictions. This will ensure that common management goals and objectives are being achieved across the region in an effective and efficient manner.

The guidance provided in the plan is applicable to anyone managing invasive plants within the Thompson Nicola Region, including organizations, agencies, groups and individuals. The plan highlights priority invasive plants that have the greatest potential for spread, resulting in severe economic, environmental and/or social impacts.

This plan, coordinated and maintained by the Thompson-Nicola Invasive Plant Management Committee, is a living document and will be updated on an annual basis, or as circumstances warrant, to reflect changes in invasive plant presence in the region.



Spotted knapweed

SCOPE

The plan addresses terrestrial, including riparian, invasive plants within the Thompson- Nicola Regional District (TNRD) boundaries.

The plan excludes native plants, animals and organisms, invasive terrestrial and aquatic animals and aquatic invasive plants within and beyond the TNRD.

WHY CARE?

The Thompson- Nicola Region covers ~45,000km² of BC's land base that encompasses a variety of ecosystem classes such as Interior Douglas Fir, Montane Spruce, Interior Cedar-Hemlock, Engelmann spruce, Bunchgrass, Sub-boreal Spruce, Ponderosa Pine, and Alpine Tundra. These ecosystems support a rich diversity of plants and wildlife, numerous industries including agriculture, forestry and mining and offers a variety of recreational opportunities for residents and visitors. These resources and values are being threatened by invasive plants:



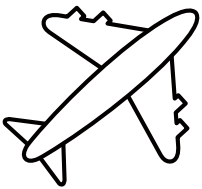
Agriculture

There are over 83,000 hectares of land being farmed in the region, either for livestock production, fruit and vegetable production and/or other commodities, such as forage and silage. In addition, there are hundreds of thousands of hectares of land being used as rangelands. Impacts of invasive plants on agricultural industry include harboring insects and diseases of crops, reducing crop quality and market opportunities, and decreasing farm income and grazing opportunities.



Forestry

As a provincially recognized forest center, Kamloops and the Central Interior of B.C. account for the second highest concentration of value-added plants, related to forestry, in the province (Venture Kamloops, 2020). Invasive plants may impact forest yields and regeneration success of planted and native trees.



Tourism

The Thompson-Nicola Region is famous for its vineyards, skiing, golfing, hiking, boating and camping. In 2019, 1.9 M people visited the Kamloops area, spending \$303 M (Venture Kamloops, 2020). Tourism, and the revenue it generates, can be compromised by invasive plants by decreasing aesthetics, accessibility and usability of many of the resources and services that draw visitors to the region.



Society

Natural areas across the region support a wealth of recreational activities including hunting, fishing, swimming, hiking, bird watching, and mountain biking. These valued areas are being impacted by invasive plants by reducing aesthetics, accessibility and usability of recreational areas. They can also impact human health, property values, and infrastructure and be a financial burden on citizens due to management costs and infrastructure repairs.

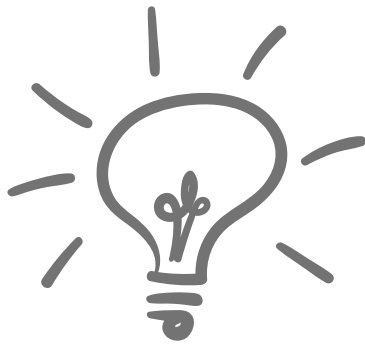
ABOUT THE TNIPMC

The Thompson Nicola Invasive Plant Management Committee (TNIPMC) encourages multi-party collaboration on invasive plant management throughout the Thompson-Nicola Regional District (TNRD). The TNIPMC is administered by the TNRD and is comprised of key partners whose values are impacted by invasive plants.



OUR GOAL

AN INVASIVE PLANT-FREE TNRD



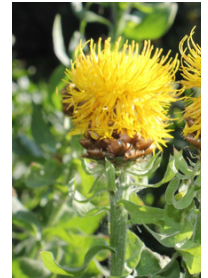
OUR MISSION

To ensure that agencies, organizations, and the public work together to stop the spread and introduction of invasive plants in the TNRD, through management, education, coordination and communication.

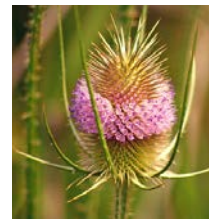


CRITERIA FOR PRIORITIZING INVASIVE SPECIES MANAGEMENT ACTIVITIES

The development of this plan was guided by a Technical Advisory Committee (TAC) that was comprised of experienced land managers representing several perspectives including Provincial and Local governments, and various stewardship groups.



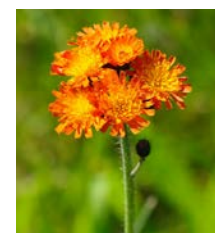
The TAC compiled a working list of 72 invasive plants that was derived from federal, provincial and locally regulated invasive plant species. Additional invasive plants were identified in the region through the Invasive Alien Plant Program reports and TAC expertise. Each of these species went through a risk assessment process that addressed the plants current regional distribution, ability to disperse, biology/reproduction, ecology (preferred habitat), impacts and management feasibility. The plants were placed in their initial categories based on their risk assessment score.



The TAC recognized that different areas of the region are faced with different invasive plant presence as a result of varied climates and ecosystems. Accordingly, the region was divided into 5 smaller Invasive Plant Management Areas (IPMA) and individual priority invasive plant lists were developed for each. The IPMA's were delineated by biogeoclimatic zones, TNRD electoral areas and physical features on the landscape (i.e. major transportation corridors, rivers etc.). The invasive plant lists for each IPMA were developed using the species from the regional priority list. Assignment of management objectives for the IPMA invasive plant lists was subjective and based on literature review and TAC member expertise and knowledge.



It is important to recognize that there are additional invasive plants in the region that are not included in the priority lists provided. These invasive plants are either outside the scope of this plan OR require more data to be considered a regional priority invasive plant. These additional plants should also be considered during management planning. A list of additional invasive plants within the region are available in Appendix III.



INVASIVE PLANT CATEGORIES & MANAGEMENT OBJECTIVES

The following table lists the invasive plant categories, management objectives and management expectations for the priority invasive species included in this plan. Each priority invasive plant in the region has been assigned to a category based on the outcomes of a risk assessment and current distribution across the region/IPMA.

It is recognized that invasive plant management goals will vary at regional and local scales. It is important to clarify that resource investment may vary between categories for each land manager, depending on their land management objectives.

PREVENT

Early detection of newly arrived invasive species, followed by a well-coordinated rapid response, will increase the likelihood of eradicating new invasions of plants in this category. Plants within the "Prevent" category have not been confirmed within the Thompson-Nicola Region. These species pose high risk to the province, region and/or IPMA. It is expected that land managers prioritize these species for surveillance and carry out best management practices to prevent these plants from establishing on their lands. All species within this category should be immediately reported to the TNIPMC who will assist in coordinating an immediate management response:

- Email: invasiveplants@tnrd.ca
- Phone: 1-877-377-8673

A ERADICATE

Plants listed in this category are present in very limited distribution. These species pose high risk to the province, region and/or IPMA and it is expected that land managers control infestations as soon as they are noted. Annual monitoring and treatment is required until the infestation can be deemed eradicated. All species within this category should be immediately reported to the TNIPMC who will assist in coordinating an immediate management response:

- Email: invasiveplants@tnrd.ca
- Phone: 1-877-377-8673

B CONTROL

Category B species are known to exist in the region/IPMA in limited distribution. If left untreated, these plants have significant potential to spread throughout the region/IPMA. Control to prevent spread can be achieved through annual treatment and monitoring of ALL infestations in the region/IPMA.

C CONTAIN & SITE SPECIFIC CONTROL

Category C species are present in abundance throughout the region/IPMA but they have not yet infested all potential habitats. Eradication of these plants is not likely however management can still take place in areas that are highly valued and/or are relatively invasive free.

The containment areas for select category C species is available in Appendix II . It is expected that land managers control all invasive plants outside of the containment area and may choose to control select infestations within the containment area to protect specific land values.

Land manager managers may choose to create their own containment areas to protect certain values. Similarly, it is expected land managers control all invasive plants outside of these containment area.

D- MONITOR & SITE SPECIFIC CONTROL

Category D species are common and widespread, occupying most or all potential habitats within the region/IPMA. Widespread control of these species is not currently possible unless funding and resources are significantly increased. In this category, management efforts are carried out to prevent spread into un-infested habitat and protect local area land values. It is expected that land managers will monitor the impact of the species on local area land values and carry out control based on specific land management objectives. The use of biological control may be considered where agents are available.



ARE CATEGORY A & B SPECIES MORE IMPORTANT THAN C AND D?

NO! Land managers are encouraged to manage category C and D species to protect their values and/or achieve their specific management goals. For example, Hoary alyssum and Spotted Knapweed are listed in category C and D respectively at a regional scale;

however that DOES NOT mean land managers should make them less of a priority. All land managers, including provincial government agencies, are encouraged to allocate resources to manage category C and D species, if it will help achieve their overall management objectives.



INVASIVE PLANT LISTS

A region wide invasive plant list has been developed to assist managing invasive plants at a regional level. To address the reality that different areas of the region are facing different invasive plant issues, five Invasive Plant Management Areas (IPMAs) have been established, each with their own corresponding priority invasive plant lists. These lists are available in Appendix I.

MONITORING PROGRESS

Tracking the progress of a coordinated invasive plant management effort within the region is a key element to evaluating the overall success of this operational plan.

Recommendations for annual monitoring to address progress includes :

- Reviewing regional priority species and updating regional priority plant list.
- Reviewing priority species for each IPMA and update IPMA priority plant lists.
- Opportunity for all partners/stakeholders to provide input on regional/IPMA priorities and coordinate activities.
- Monitoring eradication efforts to ensure plants reported under this category are eradicated.
- Monitoring containment efforts by reviewing containment areas and adjusting containment as required.
- Tracking and evaluating regional management efforts (i.e. # treatments, area treated etc)

REFERENCES

BC Ministry of Forests, Lands, Natural Resource Operations and Rural Development. Biogeoclimatic Ecosystem Classification Program. Available online at: <https://www.for.gov.bc.ca/hre/becweb/resources/maps/FieldMaps.html>

Cariboo Chilcotin Coast Invasive Plant Committee. 2017. Regional Strategic Plan for Invasive Plant Management. Available online: https://cccipc.ca/documents/2017_RSP.pdf

Columbia Shuswap Invasive Species Society. 2014. Operational Plan for Terrestrial Invasive Plants in the Columbia Shuswap 2014 – 2019. Available online: https://columbiashuswapinvasives.org/wp-content/uploads/2015/12/CSISS-Operational-Plan-Final_Updated-March-2018.pdf

Environment Canada. 2004. An Invasive Alien Species Strategy for Canada. Available online: http://publications.gc.ca/collections/collection_2014/ec/CW66-394-2004-eng.pdf

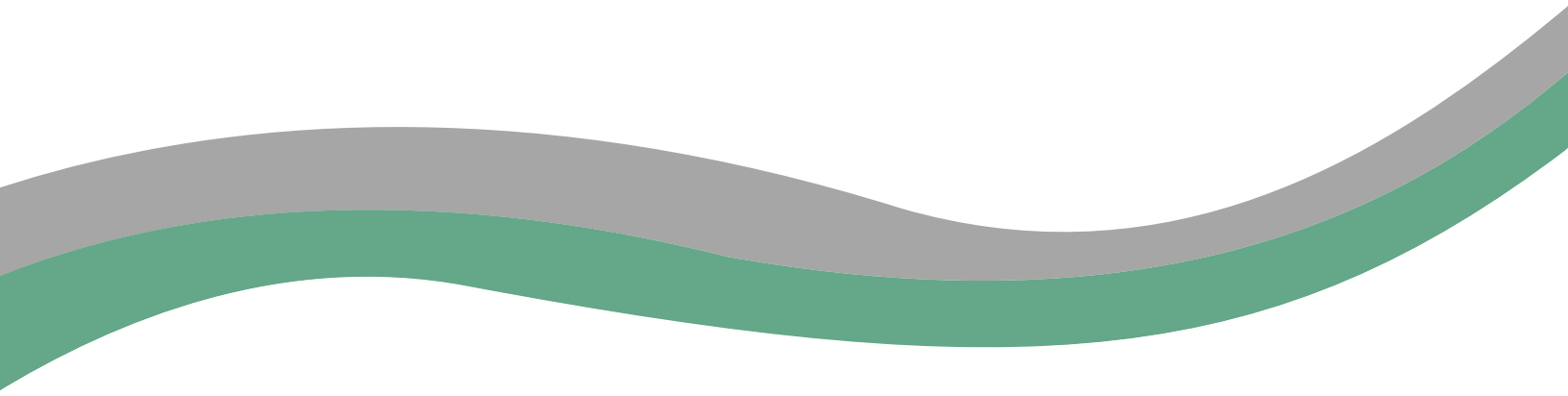
PNWER Invasive Species Working Group. Economic Impacts of Invasive Species in the Pacific Northwest Economic Region. 2012. Available online: http://www.aquaticnuisance.org/wordpress/wp-content/uploads/2010/06/economicimpacts_pnwer_2012.pdf

Statistics Canada. 2007. Thompson-Nicola, British Columbia (Code5933) (table). 2006 Community Profiles. 2006 Census. Statistics Canada Catalogue no. 92-591-XWE. Ottawa. Released March 13, 2007. Available online: <https://www12.statcan.gc.ca/census-recensement/2006/dp-pd/prof/92-591/index.cfm?Lang=E>

Venture Kamloops. Economic Development. 2020. Accessed November 27, 2020. <https://venturekamloops.com/why-kamloops/industries/tourism>.

APPENDIX 1

REGIONAL PRIORITY INVASIVE PLANT LISTS

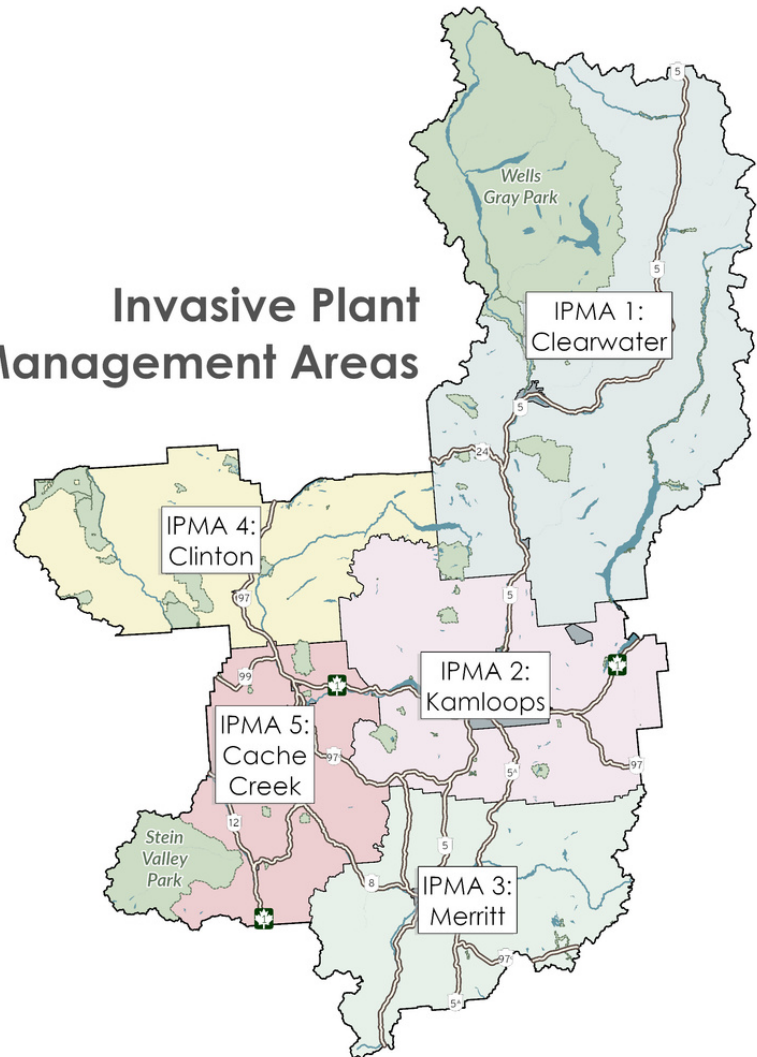


THOMPSON-NICOLA REGION

- The Thompson Nicola Region includes electoral areas A – Wells Gray Country, B – Thompson Headwaters, E – Bonaparte Plateau, I – Blue Sky Country, J – Copper Desert Country, L – Grasslands, M – Beautiful Nicola Valley – North, N – Beautiful Nicola Valley – South, O – Lower North Thompson, P – Rivers and the Peaks.
- Municipalities within the region include: Ashcroft, Barriere, Cache Creek, Chase, Clearwater, Clinton, Kamloops, Logan Lake, Lytton, Merritt, and Sun Peaks
- Major transportation corridors include Highways 1, 5, 5A, 8, 12, 24, 97, 97C and 97D
- The TNRD borders the following regional districts: Fraser-Fort George, Cariboo, Squamish-Lillooet, Fraser Valley, Central Okanagan, North Okanagan, and Columbia Shuswap

The Thompson - Nicola Region is one of the most biophysically diverse regions in the province. Ecosystems range from the coastal transition zone in the western part of the region (west Fraser) through the interior dry grasslands to the interior temperate rainforest.

Invasive Plant Management Areas



PRIORITY INVASIVE PLANT LIST

Common Name	Latin Name	Management Objective
Bur chervil	<i>Anthriscus caucalis</i>	Prevent
Chameleon plant	<i>Houttuynia cordata</i>	Prevent
Common crupina	<i>Crupina vulgaris</i>	Prevent
Garlic mustard	<i>Alliaria petiolata</i>	Prevent
Giant hogweed	<i>Heracleum mantegazzianum</i>	Prevent
Giant mannagrass/Reed sweetgrass	<i>Glyceria maxima</i>	Prevent
Italian arum	<i>Arum italicum</i>	Prevent
Jointed goatgrass	<i>Aegilops cylindrica</i>	Prevent
Longspine sandbur	<i>Cenchrus longispinus</i>	Prevent
Mouse-ear-hawkweed	<i>Pilosella officinarum</i>	Prevent
North Africa grass	<i>Ventenata dubia</i>	Prevent
Purple nutsedge	<i>Cyperus rotundus</i>	Prevent
Shiny geranium	<i>Geranium lucidum</i>	Prevent
Velvetleaf	<i>Abutilon theophrasti</i>	Prevent
Wild oats	<i>Avena fatua</i>	Prevent
Yellow nutsedge	<i>Cyperus esculentus</i>	Prevent
Black henbane	<i>Hyoscyamus niger</i>	A-Eradicate
Black knapweed	<i>Centaurea nigra</i>	A-Eradicate
Bohemian knotweed	<i>Fallopia x bohémica</i>	A-Eradicate
Brown knapweed	<i>Centaurea jacea</i>	A-Eradicate
Caraway	<i>Carum carvi</i>	A-Eradicate
Carpet burweed	<i>Soliva sessilis</i>	A-Eradicate
Common bugloss	<i>Anchusa officinalis</i>	A-Eradicate
Common cocklebur	<i>Xanthium orientale</i>	A-Eradicate
Cutleaf blackberry	<i>Rubus laciniatus</i>	A-Eradicate
Cypress spurge	<i>Euphorbia cyparissias</i>	A-Eradicate
Dames rocket	<i>Hesperis matronalis</i>	A-Eradicate
Fernleaf Yarrow	<i>Achillea filipendulina</i>	A-Eradicate
Garden yellow loosestrife	<i>Lysimachia vulgaris</i>	A-Eradicate
Giant knotweed	<i>Fallopia sachalinensis</i>	A-Eradicate
Himalayan balsam	<i>Impatiens glandulifera</i>	A-Eradicate
Himalayan blackberry	<i>Rubus armeniacus</i>	A-Eradicate
Himalayan knotweed	<i>Polygonum polystachyum</i>	A-Eradicate
Japanese butterbur	<i>Petasites japonicus</i>	A-Eradicate
Marsh plume thistle	<i>Cirsium palustre</i>	A-Eradicate
Meadow knapweed	<i>Centaurea x moncktonii</i>	A-Eradicate

Myrtle spurge	<i>Euphorbia myrsinites</i>	A-Eradicate
Perennial pepperweed	<i>Lepidium latifolium</i>	A-Eradicate
Persian cornflower	<i>Centaurea dealbata</i>	A-Eradicate
Phragmites		A-Eradicate
Puncturevine	<i>Tribulus terrestris</i>	A-Eradicate
Purple loosestrife	<i>Lythrum salicaria</i>	A-Eradicate
Queen Annes lace	<i>Daucus carota</i>	A-Eradicate
Rush skeletonweed	<i>Chondrilla juncea</i>	A-Eradicate
Scotch broom	<i>Cytisus scoparius</i>	A-Eradicate
Sweet fennel	<i>Foeniculum vulgare</i>	A-Eradicate
Tansy ragwort	<i>Senecio jacobaea</i>	A-Eradicate
Teasel	<i>Dipsacus fullonum</i>	A-Eradicate
Tree of Heaven	<i>Ailanthus altissima</i>	A-Eradicate
Wild 4 O'clock	<i>Mirabilis nyctaginea</i>	A-Eradicate
Wild chervil	<i>Anthriscus sylvestris</i>	A-Eradicate
Wild parsnip	<i>Pastinaca sativa</i>	A-Eradicate
Bighead knapweed	<i>Centaurea macrocephala</i>	B- Control
Hoary cress	<i>Cardaria spp.</i>	B-Control
Japanese knotweed	<i>Fallopia japonica</i>	B-Control
Poison hemlock	<i>Conium maculatum L</i>	B- Control
Scotch thistle	<i>Onopordum acanthium</i>	B-Control
Yellow flag iris	<i>Iris pseudacorus</i>	B-Control
Baby's breath	<i>Gypsophila paniculata</i>	C-Contain & Site Specific Control
Blueweed	<i>Echium vulgare</i>	C-Contain & Site Specific Control
Bulbous bluegrass	<i>Poa bulbosa</i>	C- Contain & Site Specific Control
Common tansy	<i>Tanacetum vulgare</i>	C- Contain & Site Specific Control
Field scabious	<i>Knautia arvensis</i>	C- Contain & Site Specific Control
Hoary alyssum	<i>Berteroa incana</i>	C- Contain & Site Specific Control
Leafy spurge	<i>Euphorbia esula</i>	C- Contain & Site Specific Control
Meadow Goats beard	<i>Tragopogon pratensis</i>	C- Contain & Site Specific Control
Nodding thistle	<i>Carduus nutans</i>	C- Contain & Site Specific Control
Orange hawkweed ¹	<i>Hieracium aurantiacum</i>	C- Contain & Site Specific Control
Plumeless thistle	<i>Carduus acanthoides</i>	C- Contain & Site Specific Control

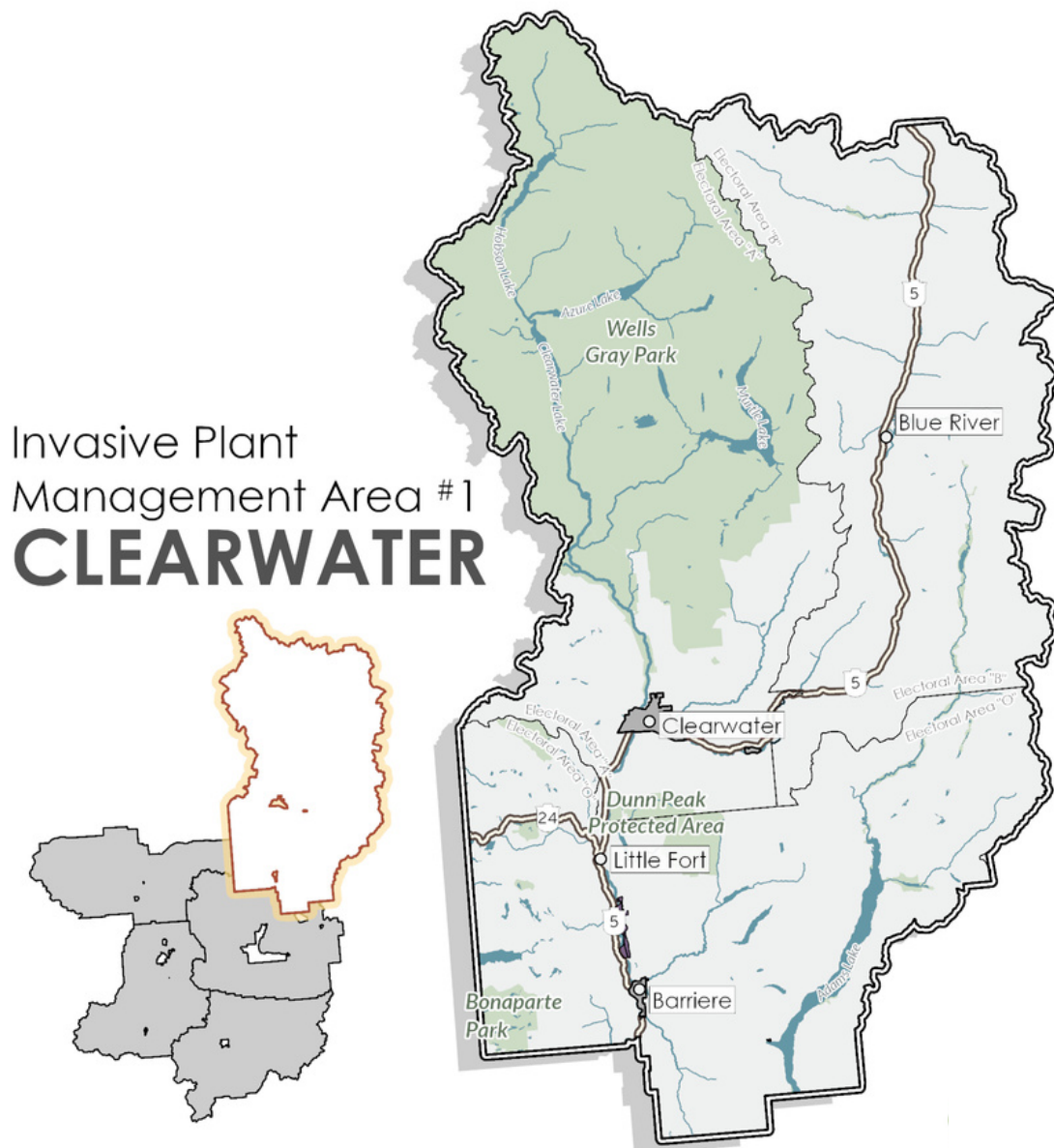
Russian knapweed	<i>Centaurea repens</i>	C- Contain & Site Specific Control
St. Johns wort	<i>Hypericum perforatum</i>	C- Contain & Site Specific Control
Whiplash hawkweed	<i>Hieracium flagellare</i>	C- Contain & Site Specific Control
Yellow bedstraw	<i>Galium verum</i>	C- Contain & Site Specific Control
Bladder campion	<i>Silene cucubalus</i>	D- Monitor & Site Specific Control
Bull thistle	<i>Cirsium vulgare</i>	D- Monitor & Site Specific Control
Bur buttercup	<i>Ranunculus testiculatus</i>	D- Monitor & Site Specific Control
Burdock	<i>Arctium minus</i>	D- Monitor & Site Specific Control
Canada thistle	<i>Cirsium vulgare</i>	D- Monitor & Site Specific Control
Chicory	<i>Cichorium intybus</i>	D- Monitor & Site Specific Control
Chinese boxthorn	<i>Lycium barbarum</i>	D- Monitor & Site Specific Control
Common toadflax	<i>Linaria vulgaris</i>	D- Monitor & Site Specific Control
Dalmatian toadflax	<i>Linaria dalmatica</i>	D- Monitor & Site Specific Control
Diffuse knapweed	<i>Centaurea diffusa</i>	D- Monitor & Site Specific Control
Field bindweed	<i>Convolvulus arvensis</i>	D- Monitor & Site Specific Control
Hounds tongue	<i>Cynoglossum officinale</i>	D- Monitor & Site Specific Control
Mountain bluet	<i>Centaurea montana</i>	D- Monitor & Site Specific Control
Night flowering catchfly	<i>Silene noctiflora</i>	D- Monitor & Site Specific Control
Oxeye daisy	<i>Leucanthemum vulgare</i>	D- Monitor & Site Specific Control
Russian olive	<i>Elaeagnus angustifolia</i>	D- Monitor & Site Specific Control
Scentless chamomile	<i>Matricaria maritima</i>	D- Monitor & Site Specific Control
Spotted knapweed	<i>Centaurea maculosa</i>	D- Monitor & Site Specific Control
Sulphur cinquefoil	<i>Potentilla recta</i>	D- Monitor & Site Specific Control
Western goats beard	<i>Tragopogon dubius</i>	D- Monitor & Site Specific Control
Yellow hawkweed species		D- Monitor & Site Specific Control

Foot Notes:

1. Priority areas for treatment within OH containment area include high elevation areas/ alpine habitat.

IPMA 1- CLEARWATER

- This management area includes TNRD electoral areas A, B and O.
- Municipalities and communities within this IPMA include, but are not limited to: Albreda, Blue River, Avola, Vavenby, Clearwater, Little Fort, and Barriere.
- The management area is comprised of several ecosystem types: Engelmann Spruce-Subalpine Fir, Interior Cedar Hemlock, Interior Douglas Fir, and Montane Spruce. The area is generally wet and cool.
- Major transportation corridors include Highway 5 and 24.
- This IPMA borders the following regional districts: Fraser-Fort George, Columbia Shuswap and Cariboo.



PRIORITY INVASIVE PLANT LIST

Common Name	Latin Name	Management Objective
Bur chervil	<i>Anthriscus caucalis</i>	Prevent
Chameleon plant	<i>Houttuynia cordata</i>	Prevent
Common crupina	<i>Crupina vulgaris</i>	Prevent
Garlic mustard	<i>Alliaria petiolata</i>	Prevent
Giant hogweed	<i>Heracleum mantegazzianum</i>	Prevent
Giant mannagrass/Reed sweetgrass	<i>Glyceria maxima</i>	Prevent
Italian arum	<i>Arum italicum</i>	Prevent
Jointed goatgrass	<i>Aegilops cylindrica</i>	Prevent
Longspine sandbur	<i>Cenchrus longispinus</i>	Prevent
Mouse-ear-hawkweed	<i>Pilosella officinarum</i>	Prevent
North Africa grass	<i>Ventenata dubia</i>	Prevent
Purple nutsedge	<i>Cyperus rotundus</i>	Prevent
Velvetleaf	<i>Abutilon theophrasti</i>	Prevent
Shiny geranium	<i>Geranium lucidum</i>	Prevent
Wild oats	<i>Avena fatua</i>	Prevent
Yellow nutsedge	<i>Cyperus esculentus</i>	Prevent
Baby's breath	<i>Gypsophila paniculata</i>	A-Eradicate
Bighead knapweed	<i>Centaurea macrocephala</i>	A-Eradicate
Black henbane	<i>Hyoscyamus niger</i>	A-Eradicate
Black knapweed	<i>Centaurea nigra</i>	A-Eradicate
Blueweed	<i>Echium vulgare</i>	A-Eradicate
Bohemian knotweed	<i>Fallopia x bohémica</i>	A-Eradicate
Brown knapweed	<i>Centaurea jacea</i>	A-Eradicate
Bulbous bluegrass	<i>Poa bulbosa</i>	A-Eradicate
Caraway	<i>Carum carvi</i>	A-Eradicate
Carpet burweed	<i>Siliva sessilis</i>	A-Eradicate
Common bugloss	<i>Anchusa officinalis</i>	A-Eradicate
Common cocklebur	<i>Xanthium orientale</i>	A-Eradicate
Cutleaf blackberry	<i>Rubus laciniatus</i>	A-Eradicate
Cypress spurge	<i>Euphorbia cyparissias</i>	A-Eradicate
Dame's rocket	<i>Hesperis matronalis</i>	A-Eradicate

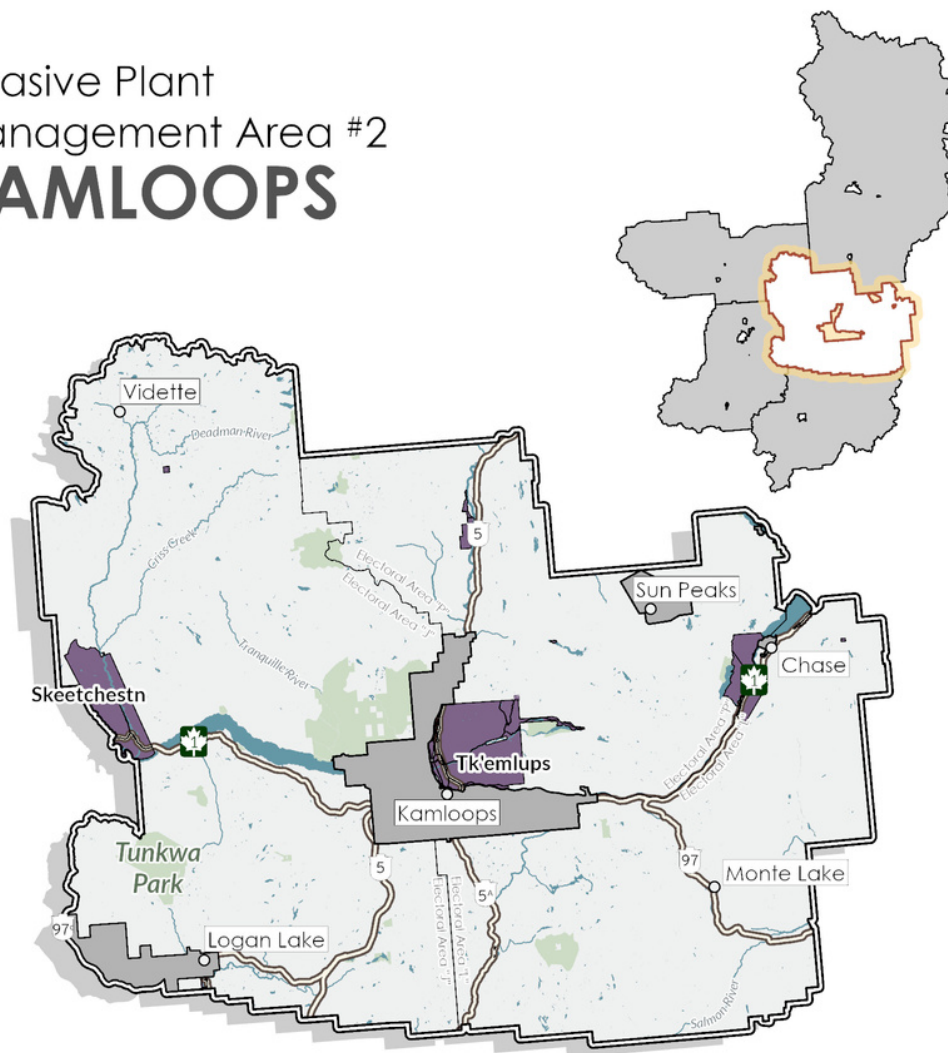
Fernleaf yarrow	<i>Achillea filipendulina</i>	A-Eradicate
Field scabious	<i>Knautia arvensis</i>	A-Eradicate
Garden yellow loosestrife	<i>Lysimachia vulgaris</i>	A-Eradicate
Giant knotweed	<i>Fallopia sachalinensis</i>	A-Eradicate
Himalayan balsam	<i>Impatiens glandulifera</i>	A-Eradicate
Himalayan blackberry	<i>Rubus armeniacus</i>	A-Eradicate
Himalayan knotweed	<i>Polygonum polystachyum</i>	A-Eradicate
Hoary cress	<i>Cardaria spp.</i>	A-Eradicate
Japanese butterbur	<i>Petasites japonicus</i>	A-Eradicate
Jointed goatgrass*	<i>Aegilops cylindrica</i>	A-Eradicate
Leafy spurge	<i>Euphorbia esula</i>	A-Eradicate
Marsh plume thistle	<i>Cirsium palustre</i>	A-Eradicate
Meadow knapweed	<i>Centaurea x moncktonii</i>	A-Eradicate
Myrtle spurge	<i>Euphorbia myrsinites</i>	A-Eradicate
Nodding thistle	<i>Carduus nutans</i>	A-Eradicate
Perennial pepperweed	<i>Lepidium latifolium</i>	A-Eradicate
Persian cornflower	<i>Centaurea dealbata</i>	A-Eradicate
Phragmites		A-Eradicate
Poison hemlock	<i>Conium maculatum L</i>	A-Eradicate
Puncturevine	<i>Tribulus terrestris</i>	A-Eradicate
Purple loosestrife	<i>Lythrum salicaria</i>	A-Eradicate
Queen Annes lace	<i>Daucus carota</i>	A-Eradicate
Rush skeletonweed	<i>Chondrilla juncea</i>	A-Eradicate
Russian knapweed	<i>Centaurea repens</i>	A-Eradicate
Scotch broom	<i>Cytisus scoparius</i>	A-Eradicate
Scotch thistle	<i>Onopordum acanthium</i>	A-Eradicate
Sweet fennel	<i>Foeniculum vulgare</i>	A-Eradicate
Tansy ragwort	<i>Senecio jacobaea</i>	A-Eradicate
Teasel	<i>Dipsacus fullonum</i>	A-Eradicate
Tree of Heaven	<i>Ailanthus altissima</i>	A-Eradicate
Wild 4 O'clock	<i>Mirabilis nyctaginea</i>	A-Eradicate
Wild chervil	<i>Anthriscus sylvestris</i>	A-Eradicate

Wild parsnip	<i>Pastinaca sativa</i>	A-Eradicate
Yellow bedstraw	<i>Galium verum</i>	A-Eradicate
Japanese knotweed	<i>Fallopia japonica</i>	B-Control
Meadow goats beard	<i>Tragopogon pratensis</i>	B-Control
Plumeless thistle	<i>Carduus acanthoides</i>	B-Control
Yellow flag iris	<i>Iris pseudacorus</i>	B-Control
Common tansy	<i>Tanacetum vulgare</i>	C- Contain & Site Specific Control
Hoary alyssum	<i>Berteroa incana</i>	C- Contain & Site Specific Control
Orange hawkweed	<i>Hieracium aurantiacum</i>	C- Contain & Site Specific Control
St. Johns wort	<i>Hypericum perforatum</i>	C- Contain & Site Specific Control
Whiplash hawkweed	<i>Hieracium flagellare</i>	C- Contain & Site Specific Control
Bladder campion	<i>Silene cucubalus</i>	D- Monitor & Site Specific Control
Bull thistle	<i>Cirsium vulgare</i>	D- Monitor & Site Specific Control
Bur buttercup	<i>Ranunculus testiculatus</i>	D- Monitor & Site Specific Control
Burdock	<i>Arctium minus</i>	D- Monitor & Site Specific Control
Canada thistle	<i>Cirsium vulgare</i>	D- Monitor & Site Specific Control
Chicory	<i>Cichorium intybus</i>	D- Monitor & Site Specific Control
Chinese boxthorn	<i>Lycium barbarum</i>	D- Monitor & Site Specific Control
Common toadflax	<i>Linaria vulgaris</i>	D- Monitor & Site Specific Control
Dalmatian toadflax	<i>Linaria dalmatica</i>	D- Monitor & Site Specific Control
Diffuse knapweed	<i>Centaurea diffusa</i>	D- Monitor & Site Specific Control
Field bindweed	<i>Convolvulus arvensis</i>	D- Monitor & Site Specific Control
Hounds tongue	<i>Cynoglossum officinale</i>	D- Monitor & Site Specific Control
Mountain bluet	<i>Centaurea montana</i>	D- Monitor & Site Specific Control
Night flowering catchfly	<i>Silene noctiflora</i>	D- Monitor & Site Specific Control
Oxeye daisy	<i>Leucanthemum vulgare</i>	D- Monitor & Site Specific Control
Russian olive	<i>Elaeagnus angustifolia</i>	D- Monitor & Site Specific Control
Scentless chamomile	<i>Matricaria maritima</i>	D- Monitor & Site Specific Control
Spotted knapweed	<i>Centaurea maculosa</i>	D- Monitor & Site Specific Control
Sulphur cinquefoil	<i>Potentilla recta</i>	D- Monitor & Site Specific Control
Western goat's beard	<i>Tragopogon dubius</i>	D- Monitor & Site Specific Control
Yellow hawkweed species		D- Monitor & Site Specific Control

IPMA 2- KAMLOOPS

- This management area includes TNRD electoral areas J, P, and L.
- Municipalities and communities within this IPMA include, but are not limited to McLure, Heffley Creek, Sun Peaks, Kamloops, Pritchard, Westwold, Red Lake, Savona and Logan Lake.
- The area is moist and cool north of Kamloops, very hot and dry around Kamloops and dry and cool in the Logan Lake area.
- This management area is comprised of several ecosystem types: Sub-boreal spruce, Engelmann Spruce, Interior Cedar Hemlock, Montane Spruce, Ponderosa Pine, Bunchgrass and Interior Douglas Fir.
- Major transportation corridors include: HWY 1, 97, 5, 5A and 97C.
- This IPMA borders the following regional districts: Columbia-Shuswap and North Okanagan

Invasive Plant Management Area #2 **KAMLOOPS**



PRIORITY INVASIVE PLANT LIST

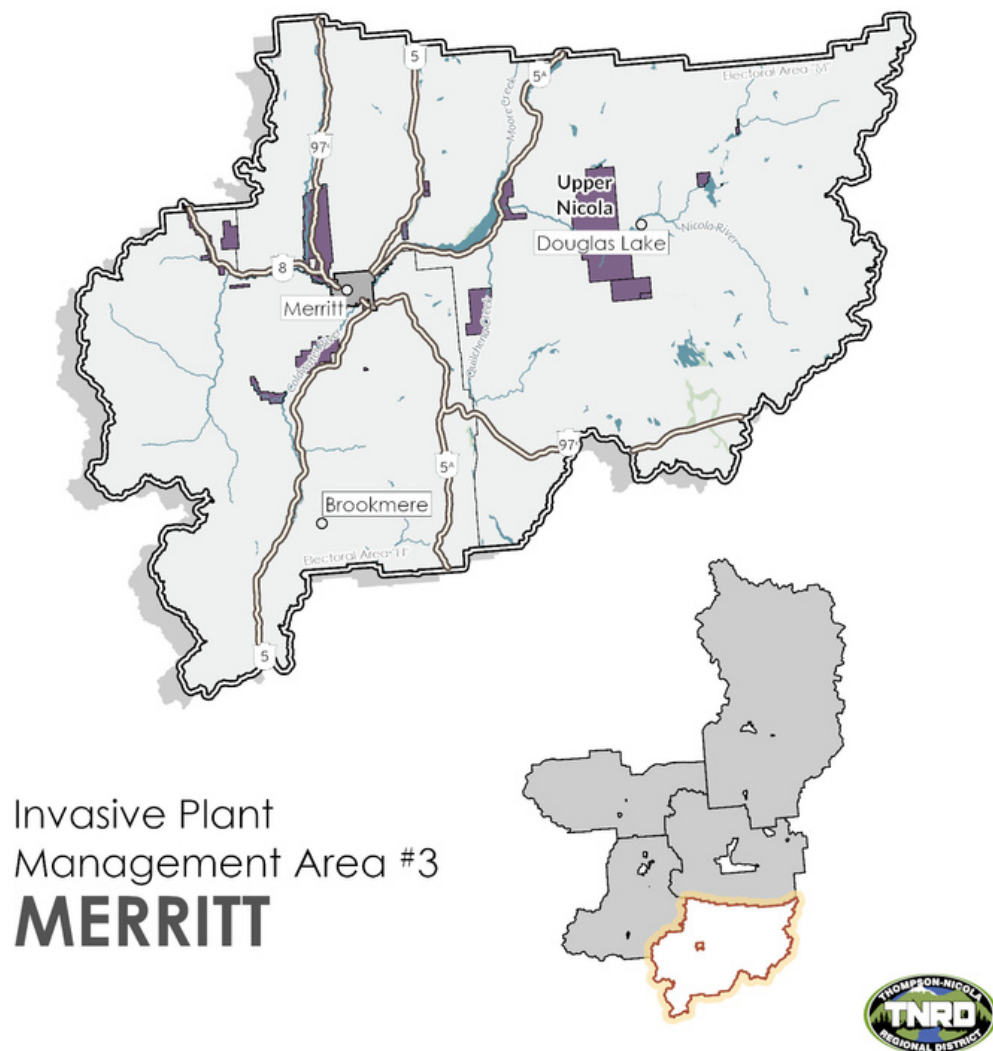
Common Name	Latin Name	Management Objective
Bur Chervil	<i>Anthriscus caucalis</i>	Prevent
Chameleon plant	<i>Houttuynia cordata</i>	Prevent
Common crupina	<i>Crupina vulgaris</i>	Prevent
Garlic mustard	<i>Alliaria petiolata</i>	Prevent
Giant Hogweed	<i>Heracleum mantegazzianum</i>	Prevent
Giant mannagrass/Reed sweetgrass	<i>Glyceria maxima</i>	Prevent
Italian arum	<i>Arum italicum</i>	Prevent
Jointed goatgrass	<i>Aegilops cylindrica</i>	Prevent
Longspine sandbur	<i>Cenchrus longispinus</i>	Prevent
Mouse-ear-hawkweed	<i>Pilosella officinarum</i>	Prevent
North Africa grass	<i>Ventenata dubia</i>	Prevent
Purple nutsedge	<i>Cyperus rotundus</i>	Prevent
Shiny geranium	<i>Geranium lucidum</i>	Prevent
Velvetleaf	<i>Abutilon theophrasti</i>	Prevent
Wild oats	<i>Avena fatua</i>	Prevent
Yellow nutsedge	<i>Cyperus esculentus</i>	Prevent
Bighead knapweed	<i>Centaurea macrocephala</i>	A-Eradicate
Black henbane	<i>Hyoscyamus niger</i>	A-Eradicate
Black knapweed	<i>Centaurea nigra</i>	A-Eradicate
Bohemian knotweed	<i>Fallopia x bohemica</i>	A-Eradicate
Brown knapweed	<i>Centaurea jacea</i>	A-Eradicate
Caraway	<i>Carum carvi</i>	A-Eradicate
Carpet burweed	<i>Soliva sessilis</i>	A-Eradicate
Common bugloss	<i>Anchusa officinalis</i>	A-Eradicate
Common cocklebur	<i>Xanthium orientale</i>	A-Eradicate
Cutleaf blackberry	<i>Rubus laciniatus</i>	A-Eradicate
Cypress spurge	<i>Euphorbia cyparissias</i>	A-Eradicate
Dames rocket	<i>Hesperis matronalis</i>	A-Eradicate
Fernleaf yarrow	<i>Achillea filipendulina</i>	A-Eradicate
Field scabious	<i>Knautia arvensis</i>	A-Eradicate
Garden yellow loosestrife	<i>Lysimachia vulgaris</i>	A-Eradicate

Giant knotweed	<i>Fallopia sachalinensis</i>	A-Eradicate
Himalayan balsam	<i>Impatiens glandulifera</i>	A-Eradicate
Himalayan blackberry	<i>Rubus armeniacus</i>	A-Eradicate
Himalayan knotweed	<i>Polygonum polystachyum</i>	A-Eradicate
Japanese butterbur	<i>Petasites japonicus</i>	A-Eradicate
Marsh plume thistle	<i>Cirsium palustre</i>	A-Eradicate
Meadow knapweed	<i>Centaurea x moncktonii</i>	A-Eradicate
Myrtle spurge	<i>Euphorbia myrsinites</i>	A-Eradicate
Perennial pepperweed	<i>Lepidium latifolium</i>	A-Eradicate
Persian cornflower	<i>Centaurea dealbata</i>	A-Eradicate
Phragmites		A-Eradicate
Puncturevine	<i>Tribulus terrestris</i>	A-Eradicate
Purple loosestrife	<i>Lythrum salicaria</i>	A-Eradicate
Queen Annes lace	<i>Daucus carota</i>	A-Eradicate
Rush skeletonweed	<i>Chondrilla juncea</i>	A-Eradicate
Scotch broom	<i>Cytisus scoparius</i>	A-Eradicate
Sweet fennel	<i>Foeniculum vulgare</i>	A-Eradicate
Tansy ragwort	<i>Senecio jacobaea</i>	A-Eradicate
Teasel	<i>Dipsacus fullonum</i>	A-Eradicate
Tree of Heaven	<i>Ailanthus altissima</i>	A-Eradicate
Whiplash hawkweed	<i>Hieracium flagellare</i>	A-Eradicate
Wild 4 O'clock	<i>Mirabilis nyctaginea</i>	A-Eradicate
Wild chervil	<i>Anthriscus sylvestris</i>	A-Eradicate
Wild parsnip	<i>Pastinaca sativa</i>	A-Eradicate
Blueweed	<i>Echium vulgare</i>	B- Control
Hoary cress	<i>Cardaria spp.</i>	B- Control
Japanese knotweed	<i>Fallopia japonica</i>	B- Control
Meadow goats beard	<i>Tragopogon pratensis</i>	B- Control
Poison hemlock	<i>Conium maculatum L</i>	B- Control
Scotch thistle	<i>Onopordum acanthium</i>	B- Control
Yellow flag iris	<i>Iris pseudacorus</i>	B- Control
Baby's breath	<i>Gypsophila paniculata</i>	C- Contain & Site Specific Control

Bulbous bluegrass	<i>Poa bulbosa</i>	C- Contain & Site Specific Control
Common tansy	<i>Tanacetum vulgare</i>	C- Contain & Site Specific Control
Hoary alyssum	<i>Berteroa incana</i>	C- Contain & Site Specific Control
Leafy spurge	<i>Euphorbia esula</i>	C- Contain & Site Specific Control
Nodding thistle	<i>Carduus nutans</i>	C- Contain & Site Specific Control
Orange hawkweed	<i>Hieracium aurantiacum</i>	C- Contain & Site Specific Control
Plumeless thistle	<i>Carduus acanthoides</i>	C- Contain & Site Specific Control
Russian knapweed	<i>Centaurea repens</i>	C- Contain & Site Specific Control
St. Johns wort	<i>Hypericum perforatum</i>	C- Contain & Site Specific Control
Yellow bedstraw	<i>Galium verum</i>	C- Contain & Site Specific Control
Bladder campion	<i>Silene cucubalus</i>	D- Monitor & Site Specific Control
Bull thistle	<i>Cirsium vulgare</i>	D- Monitor & Site Specific Control
Bur buttercup	<i>Ranunculus testiculatus</i>	D- Monitor & Site Specific Control
Burdock	<i>Arctium minus</i>	D- Monitor & Site Specific Control
Canada thistle	<i>Cirsium vulgare</i>	D- Monitor & Site Specific Control
Chicory	<i>Cichorium intybus</i>	D- Monitor & Site Specific Control
Chinese boxthorn	<i>Lycium barbarum</i>	D- Monitor & Site Specific Control
Common toadflax	<i>Linaria vulgaris</i>	D- Monitor & Site Specific Control
Dalmatian toadflax	<i>Linaria dalmatica</i>	D- Monitor & Site Specific Control
Diffuse knapweed	<i>Centaurea diffusa</i>	D- Monitor & Site Specific Control
Field bindweed	<i>Convolvulus arvensis</i>	D- Monitor & Site Specific Control
Hounds tongue	<i>Cynoglossum officinale</i>	D- Monitor & Site Specific Control
Mountain bluet	<i>Centaurea montana</i>	D- Monitor & Site Specific Control
Night flowering catchfly	<i>Silene noctiflora</i>	D- Monitor & Site Specific Control
Oxeye daisy	<i>Leucanthemum vulgare</i>	D- Monitor & Site Specific Control
Russian olive	<i>Elaeagnus angustifolia</i>	D- Monitor & Site Specific Control
Scentless chamomile	<i>Matricaria maritima</i>	D- Monitor & Site Specific Control
Spotted knapweed	<i>Centaurea maculosa</i>	D- Monitor & Site Specific Control
Sulphur cinquefoil	<i>Potentilla recta</i>	D- Monitor & Site Specific Control
Western goats beard	<i>Tragopogon dubius</i>	D- Monitor & Site Specific Control
Yellow hawkweed species		D- Monitor & Site Specific Control

IMPA 3- MERRITT

- This management area includes TNRD electoral areas M and N.
- Municipalities and communities within this IPMA include, but are not limited to: Merritt, Upper Nicola, Lower Nicola, Quilchena, Douglas Lake, Aspen Grove, Kingsvale, Brookmere and Kane Valley.
- The area is characterized as very hot and dry except for the western perimeter which receives more rainfall and is moist and warm.
- This management area is comprised several ecosystem types: Montane Spruce, Ponderosa Pine, Bunchgrass, Engelmann Spruce and Interior Douglas Fir.
- Major transportation corridors include: HWY 5, 5A, 8 and 97C.
- This IPMA borders the following regional districts: North Okanagan, Central Okanagan, Okanagan-Similkameen and Fraser Valley.



PRIORITY INVASIVE PLANT LIST

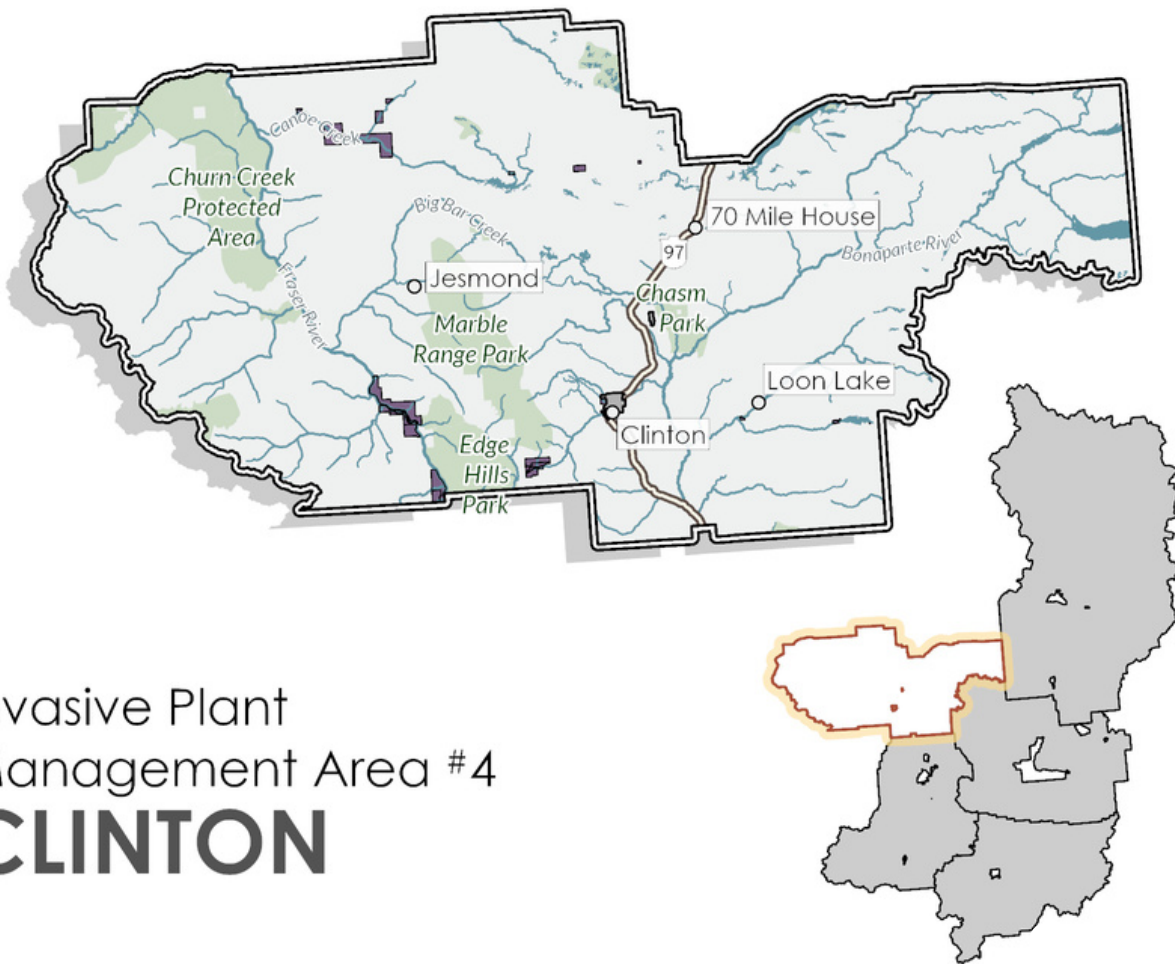
Common Name	Latin Name	Management Objective
Bur chervil	<i>Anthriscus caucalis</i>	Prevent
Chameleon plant	<i>Houttuynia cordata</i>	Prevent
Common crupina	<i>Crupina vulgaris</i>	Prevent
Garlic mustard	<i>Alliaria petiolata</i>	Prevent
Giant hogweed	<i>Heracleum mantegazzianum</i>	Prevent
Giant mannagrass/Reed sweetgrass	<i>Glyceria maxima</i>	Prevent
Italian arum	<i>Arum italicum</i>	Prevent
Jointed goatgrass	<i>Aegilops cylindrica</i>	Prevent
Longspine sandbur	<i>Cenchrus longispinus</i>	Prevent
Mouse-ear-hawkweed	<i>Pilosella officinarum</i>	Prevent
North Africa grass	<i>Ventenata dubia</i>	Prevent
Purple nutsedge	<i>Cyperus rotundus</i>	Prevent
Shiny geranium	<i>Geranium lucidum</i>	Prevent
Velvetleaf	<i>Abutilon theophrasti</i>	Prevent
Wild oats	<i>Avena fatua</i>	Prevent
Yellow nutsedge	<i>Cyperus esculentus</i>	Prevent
Black henbane	<i>Hyoscyamus niger</i>	A-Eradicate
Black knapweed	<i>Centaurea nigra</i>	A-Eradicate
Bohemian knotweed	<i>Fallopia x bohemica</i>	A-Eradicate
Brown knapweed	<i>Centaurea jacea</i>	A-Eradicate
Bulbous bluegrass	<i>Poa bulbosa</i>	A-Eradicate
Caraway	<i>Carum carvi</i>	A-Eradicate
Carpet burweed	<i>Soliva sessilis</i>	A-Eradicate
Common bugloss	<i>Anchusa officinalis</i>	A-Eradicate
Common cocklebur	<i>Xanthium orientale</i>	A-Eradicate
Cutleaf blackberry	<i>Rubus laciniatus</i>	A-Eradicate
Cypress spurge	<i>Euphorbia cyparissias</i>	A-Eradicate
Dame's rocket	<i>Hesperis matronalis</i>	A-Eradicate
Fernleaf yarrow	<i>Achillea filipendulina</i>	A-Eradicate
Garden yellow loosestrife	<i>Lysimachia vulgaris</i>	A-Eradicate
Giant knotweed	<i>Fallopia sachalinensis</i>	A-Eradicate

Himalayan balsam	<i>Impatiens glandulifera</i>	A-Eradicate
Himalayan blackberry	<i>Rubus armeniacus</i>	A-Eradicate
Himalayan knotweed	<i>Polygonum polystachyum</i>	A-Eradicate
Japanese butterbur	<i>Petasites japonicus</i>	A-Eradicate
Japanese knotweed	<i>Fallopia japonica</i>	A-Eradicate
Marsh plume thistle	<i>Cirsium palustre</i>	A-Eradicate
Meadow knapweed	<i>Centaurea x moncktonii</i>	A-Eradicate
Myrtle spurge	<i>Euphorbia myrsinites</i>	A-Eradicate
Orange hawkweed	<i>Hieracium aurantiacum</i>	A-Eradicate
Perennial pepperweed	<i>Lepidium latifolium</i>	A-Eradicate
Persian cornflower	<i>Centaurea dealbata</i>	A-Eradicate
Phragmites		A-Eradicate
Plumeless thistle	<i>Carduus acanthoides</i>	A-Eradicate
Poison hemlock	<i>Conium maculatum</i> L	A-Eradicate
Puncturevine	<i>Tribulus terrestris</i>	A-Eradicate
Purple loosestrife	<i>Lythrum salicaria</i>	A-Eradicate
Queen Annes lace	<i>Daucus carota</i>	A-Eradicate
Rush skeletonweed	<i>Chondrilla juncea</i>	A-Eradicate
Scotch broom	<i>Cytisus scoparius</i>	A-Eradicate
Sweet fennel	<i>Foeniculum vulgare</i>	A-Eradicate
Tansy ragwort	<i>Senecio jacobaea</i>	A-Eradicate
Teasel	<i>Dipsacus fullonum</i>	A-Eradicate
Tree of Heaven	<i>Ailanthus altissima</i>	A-Eradicate
Velvetleaf	<i>Abutilon theophrasti</i>	A-Eradicate
Whiplash hawkweed	<i>Hieracium flagellare</i>	A-Eradicate
Wild 4 O'clock	<i>Mirabilis nyctaginea</i>	A-Eradicate
Wild chervil	<i>Anthriscus sylvestris</i>	A-Eradicate
Wild parsnip	<i>Pastinaca sativa</i>	A-Eradicate
Yellow bedstraw	<i>Galium verum</i>	A-Eradicate
Bighead knapweed	<i>Centaurea macrocephala</i>	B-Control
Common tansy	<i>Tanacetum vulgare</i>	B-Control
Hoary alyssum	<i>Berteroa incana</i>	B-Control

Hoary cress	<i>Cardaria spp.</i>	B-Control
Leafy spurge	<i>Euphorbia esula</i>	B-Control
Meadow goat's beard	<i>Tragopogon pratensis</i>	B-Control
Russian knapweed	<i>Centaurea repens</i>	B-Control
Scotch thistle	<i>Onopordum acanthium</i>	B-Control
St. Johns wort	<i>Hypericum perforatum</i>	B-Control
Yellow flag iris	<i>Iris pseudacorus</i>	B-Control
Baby's breath	<i>Gypsophila paniculata</i>	C- Contain & Site Specific Control
Blueweed	<i>Echium vulgare</i>	C- Contain & Site Specific Control
Field scabious	<i>Knautia arvensis</i>	C- Contain & Site Specific Control
Nodding thistle	<i>Carduus nutans</i>	C- Contain & Site Specific Control
Bladder campion	<i>Silene cucubalus</i>	D- Monitor & Site Specific Control
Bull thistle	<i>Cirsium vulgare</i>	D- Monitor & Site Specific Control
Bur buttercup	<i>Ranunculus testiculatus</i>	D- Monitor & Site Specific Control
Burdock	<i>Arctium minus</i>	D- Monitor & Site Specific Control
Canada thistle	<i>Cirsium vulgare</i>	D- Monitor & Site Specific Control
Chicory	<i>Cichorium intybus</i>	D- Monitor & Site Specific Control
Chinese boxthorn	<i>Lycium barbarum</i>	D- Monitor & Site Specific Control
Common toadflax	<i>Linaria vulgaris</i>	D- Monitor & Site Specific Control
Dalmatian toadflax	<i>Linaria dalmatica</i>	D- Monitor & Site Specific Control
Diffuse knapweed	<i>Centaurea diffusa</i>	D- Monitor & Site Specific Control
Field bindweed	<i>Convolvulus arvensis</i>	D- Monitor & Site Specific Control
Hounds tongue	<i>Cynoglossum officinale</i>	D- Monitor & Site Specific Control
Mountain bluet	<i>Centaurea montana</i>	D- Monitor & Site Specific Control
Night flowering catchfly	<i>Silene noctiflora</i>	D- Monitor & Site Specific Control
Oxeye daisy	<i>Leucanthemum vulgare</i>	D- Monitor & Site Specific Control
Russian olive	<i>Elaeagnus angustifolia</i>	D- Monitor & Site Specific Control
Scentless chamomile	<i>Matricaria maritima</i>	D- Monitor & Site Specific Control
Spotted knapweed	<i>Centaurea maculosa</i>	D- Monitor & Site Specific Control
Sulphur cinquefoil	<i>Potentilla recta</i>	D- Monitor & Site Specific Control
Western goat's beard	<i>Tragopogon dubius</i>	D- Monitor & Site Specific Control
Yellow hawkweed species		D- Monitor & Site Specific Control

IPMA 4- CLINTON

- This management area includes TNRD electoral area E.
- Municipalities and communities within this IPMA include, but are not limited to: Clinton, Kelly Lake, High Bar, Big Bar Creek, Jesmond, Canoe Creek, Loon Lake and 70 Mile House.
- The area is mostly dry cool with moist cool climatic zones on higher plateaus and very hot dry areas along the Fraser River.
- The management area is comprised of several ecosystem types, including but not limited to, Interior Douglas Fir, Sub-boreal Pine-Spruce, Sub-boreal Pine, Montane Spruce, Engelmann Spruce- Subalpine Fir, and Bunchgrass.
- Major transportation corridors include: HWY 24 and 97
- This IMPA borders the following regional districts: Squamish-Lillooet and Cariboo.



Invasive Plant
Management Area #4
CLINTON

PRIORITY INVASIVE PLANT LIST

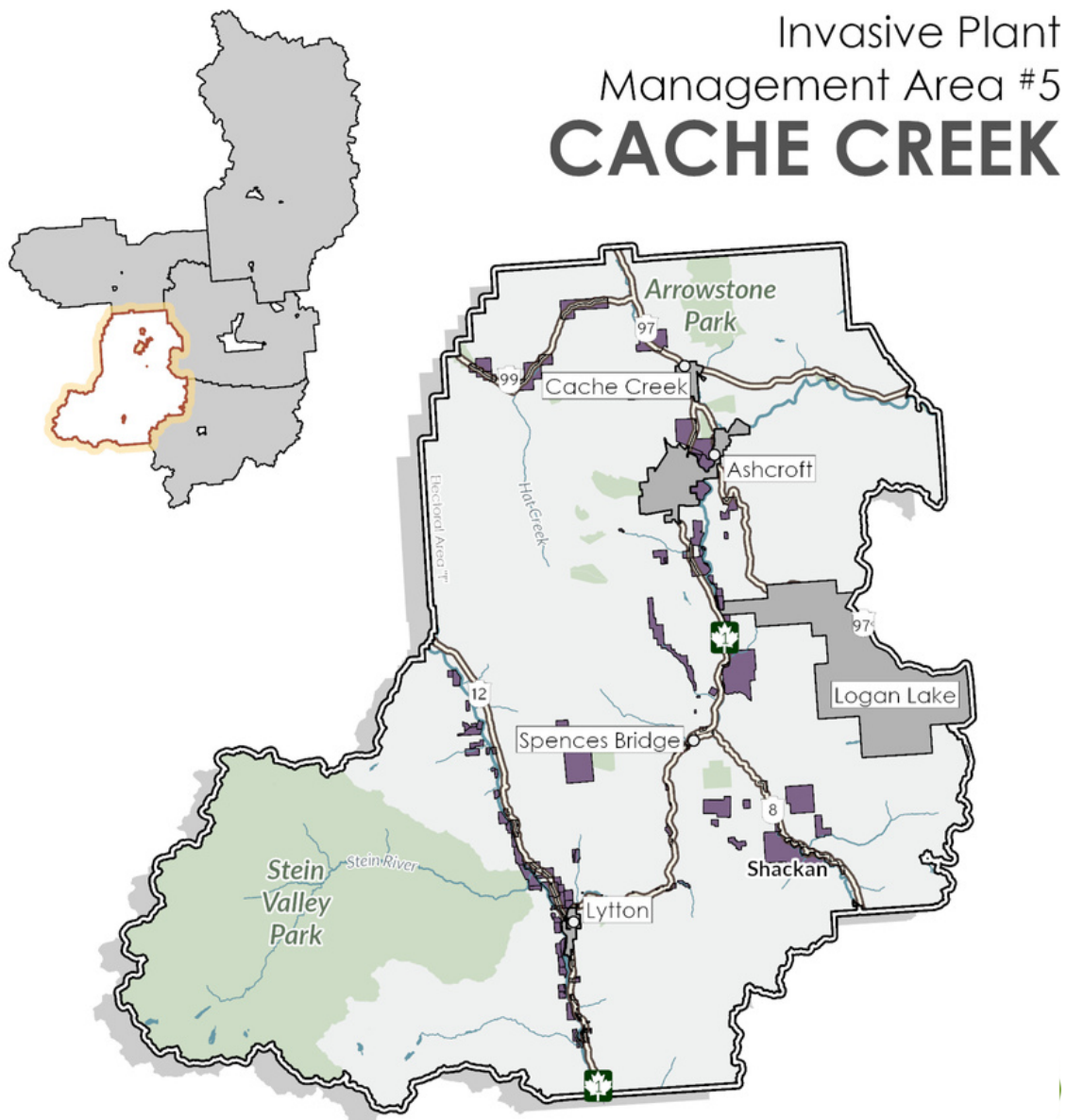
Common Name	Latin Name	Management Objective
Bur chervil	<i>Anthriscus caucalis</i>	Prevent
Chameleon plant	<i>Houttuynia cordata</i>	Prevent
Common crupina	<i>Crupina vulgaris</i>	Prevent
Garlic mustard	<i>Alliaria petiolata</i>	Prevent
Giant hogweed	<i>Heracleum mantegazzianum</i>	Prevent
Giant mannagrass/Reed sweetgrass	<i>Glyceria maxima</i>	Prevent
Italian arum	<i>Arum italicum</i>	Prevent
Jointed goatgrass	<i>Aegilops cylindrica</i>	Prevent
Longspine sandbur	<i>Cenchrus longispinus</i>	Prevent
Mouse-ear-hawkweed	<i>Pilosella officinarum</i>	Prevent
North Africa grass	<i>Ventenata dubia</i>	Prevent
Purple nutsedge	<i>Cyperus rotundus</i>	Prevent
Shiny geranium	<i>Geranium lucidum</i>	Prevent
Velvetleaf	<i>Abutilon theophrasti</i>	Prevent
Wild oats	<i>Avena fatua</i>	Prevent
Yellow nutsedge	<i>Cyperus esculentus</i>	Prevent
Bighead knapweed	<i>Centaurea macrocephala</i>	A-Eradicate
Black henbane	<i>Hyoscyamus niger</i>	A-Eradicate
Black knapweed	<i>Centaurea nigra</i>	A-Eradicate
Bohemian knotweed	<i>Fallopia x bohemica</i>	A-Eradicate
Brown knapweed	<i>Centaurea jacea</i>	A-Eradicate
Caraway	<i>Carum carvi</i>	A-Eradicate
Carpet burweed	<i>Soliva sessilis</i>	A-Eradicate
Common bugloss	<i>Anchusa officinalis</i>	A-Eradicate
Common cocklebur	<i>Xanthium orientale</i>	A-Eradicate
Cutleaf blackberry	<i>Rubus laciniatus</i>	A-Eradicate
Cypress spurge	<i>Euphorbia cyparissias</i>	A-Eradicate
Dame's rocket	<i>Hesperis matronalis</i>	A-Eradicate
Fernleaf yarrow	<i>Achillea filipendulina</i>	A-Eradicate
Field scabious	<i>Knautia arvensis</i>	A-Eradicate
Garden yellow loosestrife	<i>Lysimachia vulgaris</i>	A-Eradicate

Giant knotweed	<i>Fallopia sachalinensis</i>	A-Eradicate
Himalayan balsam	<i>Impatiens glandulifera</i>	A-Eradicate
Himalayan blackberry	<i>Rubus armeniacus</i>	A-Eradicate
Himalayan knotweed	<i>Polygonum polystachyum</i>	A-Eradicate
Hoary cress	<i>Cardaria spp.</i>	A-Eradicate
Japanese butterbur	<i>Petasites japonicus</i>	A-Eradicate
Japanese knotweed	<i>Fallopia japonica</i>	A-Eradicate
Marsh plume thistle	<i>Cirsium palustre</i>	A-Eradicate
Meadow knapweed	<i>Centaurea x moncktonii</i>	A-Eradicate
Mouse-ear-hawkweed	<i>Pilosella officinarum</i>	A-Eradicate
Myrtle spurge	<i>Euphorbia myrsinites</i>	A-Eradicate
Nodding thistle	<i>Carduus nutans</i>	A-Eradicate
Orange hawkweed	<i>Hieracium aurantiacum</i>	A-Eradicate
Perennial pepperweed	<i>Lepidium latifolium</i>	A-Eradicate
Persian cornflower	<i>Centaurea dealbata</i>	A-Eradicate
Phragmites		A-Eradicate
Plumeless thistle	<i>Carduus acanthoides</i>	A-Eradicate
Poison hemlock	<i>Conium maculatum L</i>	A-Eradicate
Puncturevine	<i>Tribulus terrestris</i>	A-Eradicate
Purple loosestrife	<i>Lythrum salicaria</i>	A-Eradicate
Queen Annes lace	<i>Daucus carota</i>	A-Eradicate
Rush skeletonweed	<i>Chondrilla juncea</i>	A-Eradicate
Scotch broom	<i>Cytisus scoparius</i>	A-Eradicate
Scotch thistle	<i>Onopordum acanthium</i>	A-Eradicate
Sweet fennel	<i>Foeniculum vulgare</i>	A-Eradicate
Tansy ragwort	<i>Senecio jacobaea</i>	A-Eradicate
Teasel	<i>Dipsacus fullonum</i>	A-Eradicate
Tree of Heaven	<i>Ailanthus altissima</i>	A-Eradicate
Whiplash hawkweed	<i>Hieracium flagellare</i>	A-Eradicate
Wild 4 O'clock	<i>Mirabilis nyctaginea</i>	A-Eradicate
Wild chervil	<i>Anthriscus sylvestris</i>	A-Eradicate
Wild parsnip	<i>Pastinaca sativa</i>	A-Eradicate

Yellow bedstraw	<i>Galium verum</i>	A-Eradicate
Baby's breath	<i>Gypsophila paniculata</i>	B-Control
Blueweed	<i>Echium vulgare</i>	B-Control
Common tansy	<i>Tanacetum vulgare</i>	B-Control
Hoary alyssum	<i>Berteroa incana</i>	B-Control
St. Johns wort	<i>Hypericum perforatum</i>	B-Control
Yellow flag iris	<i>Iris pseudacorus</i>	B-Control
Bulbous bluegrass	<i>Poa bulbosa</i>	C- Contain & Site Specific Control
Leafy spurge	<i>Euphorbia esula</i>	C- Contain & Site Specific Control
Meadow goats beard	<i>Tragopogon pratensis</i>	C- Contain & Site Specific Control
Russian knapweed	<i>Centaurea repens</i>	C- Contain & Site Specific Control
Bladder campion	<i>Silene cucubalus</i>	D- Monitor & Site Specific Control
Bull thistle	<i>Cirsium vulgare</i>	D- Monitor & Site Specific Control
Bur buttercup	<i>Ranunculus testiculatus</i>	D- Monitor & Site Specific Control
Burdock	<i>Arctium minus</i>	D- Monitor & Site Specific Control
Canada thistle	<i>Cirsium vulgare</i>	D- Monitor & Site Specific Control
Chicory	<i>Cichorium intybus</i>	D- Monitor & Site Specific Control
Chinese boxthorn	<i>Lycium barbarum</i>	D- Monitor & Site Specific Control
Common toadflax	<i>Linaria vulgaris</i>	D- Monitor & Site Specific Control
Dalmatian toadflax	<i>Linaria dalmatica</i>	D- Monitor & Site Specific Control
Diffuse knapweed	<i>Centaurea diffusa</i>	D- Monitor & Site Specific Control
Field bindweed	<i>Convolvulus arvensis</i>	D- Monitor & Site Specific Control
Hounds tongue	<i>Cynoglossum officinale</i>	D- Monitor & Site Specific Control
Mountain bluet	<i>Centaurea montana</i>	D- Monitor & Site Specific Control
Night flowering catchfly	<i>Silene noctiflora</i>	D- Monitor & Site Specific Control
Oxeye daisy	<i>Leucanthemum vulgare</i>	D- Monitor & Site Specific Control
Russian olive	<i>Elaeagnus angustifolia</i>	D- Monitor & Site Specific Control
Scentless chamomile	<i>Matricaria maritima</i>	D- Monitor & Site Specific Control
Spotted knapweed	<i>Centaurea maculosa</i>	D- Monitor & Site Specific Control
Sulphur cinquefoil	<i>Potentilla recta</i>	D- Monitor & Site Specific Control
Western goat's beard	<i>Tragopogon dubius</i>	D- Monitor & Site Specific Control
Yellow hawkweed species		D- Monitor & Site Specific Control

IPMA 5- CACHE CREEK

- This management area includes TNRD electoral area I.
- Municipalities and communities within this IPMA include, but are not limited to: Cache Creek, Upper Hat Creek, Ashcroft, Lytton, Kanaka Bar and Falls Creek.
- The area ranges from very dry hot to dry cool.
- This management area is comprised of several ecosystem types, including but not limited to, Ponderosa Pine, Interior Douglas Fir, Engelmann Spruce-Subalpine fir and Montane Spruce.
- Major transportation corridors include: HWY 1, 8, 97, 97C, 99.
- This IPMA borders the following regional districts: Fraser Valley and Squamish-Lill



PRIORITY INVASIVE PLANT LIST

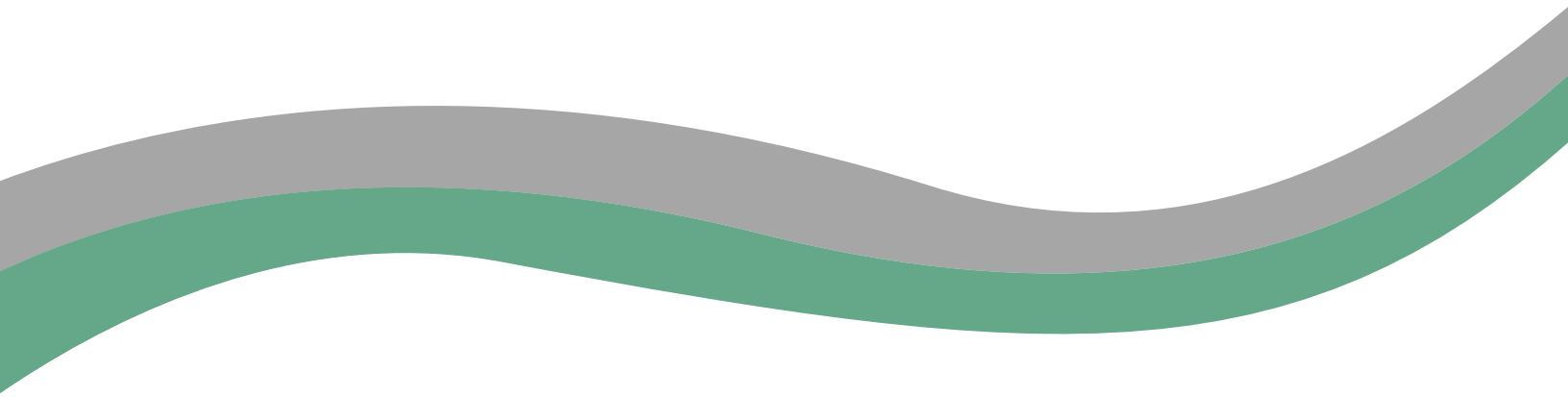
Common Name	Latin Name	Management Objective
Bur chervil	<i>Anthriscus caucalis</i>	Prevent
Chameleon plant	<i>Houttuynia cordata</i>	Prevent
Common crupina	<i>Crupina vulgaris</i>	Prevent
Garlic mustard	<i>Alliaria petiolata</i>	Prevent
Giant hogweed	<i>Heracleum mantegazzianum</i>	Prevent
Giant mannagrass/Reed sweetgrass	<i>Glyceria maxima</i>	Prevent
Italian arum	<i>Arum italicum</i>	Prevent
Jointed goatgrass	<i>Aegilops cylindrica</i>	Prevent
Longspine sandbur	<i>Cenchrus longispinus</i>	Prevent
Mouse-ear-hawkweed	<i>Pilosella officinarum</i>	Prevent
North Africa grass	<i>Ventenata dubia</i>	Prevent
Purple nutsedge	<i>Cyperus rotundus</i>	Prevent
Shiny geranium	<i>Geranium lucidum</i>	Prevent
Velvetleaf	<i>Abutilon theophrasti</i>	Prevent
Wild oats	<i>Avena fatua</i>	Prevent
Yellow nutsedge	<i>Cyperus esculentus</i>	Prevent
Bighead knapweed	<i>Centaurea macrocephala</i>	A-Eradicate
Black henbane	<i>Hyoscyamus niger</i>	A-Eradicate
Black knapweed	<i>Centaurea nigra</i>	A-Eradicate
Bohemian knotweed	<i>Fallopia x bohémica</i>	A-Eradicate
Brown knapweed	<i>Centaurea jacea</i>	A-Eradicate
Bulbous bluegrass	<i>Poa bulbosa</i>	A-Eradicate
Caraway	<i>Carum carvi</i>	A-Eradicate
Carpet burweed	<i>Soliva sessilis</i>	A-Eradicate
Common bugloss	<i>Anchusa officinalis</i>	A-Eradicate
Common cocklebur	<i>Xanthium orientale</i>	A-Eradicate
Cutleaf blackberry	<i>Rubus laciniatus</i>	A-Eradicate
Cypress spurge	<i>Euphorbia cyparissias</i>	A-Eradicate
Dames rocket	<i>Hesperis matronalis</i>	A-Eradicate
Fernleaf yarrow	<i>Achillea filipendulina</i>	A-Eradicate
Field scabious	<i>Knautia arvensis</i>	A-Eradicate

Garden yellow loosestrife	<i>Lysimachia vulgaris</i>	A-Eradicate
Giant knotweed	<i>Fallopia sachalinensis</i>	A-Eradicate
Himalayan balsam	<i>Impatiens glandulifera</i>	A-Eradicate
Himalayan blackberry	<i>Rubus armeniacus</i>	A-Eradicate
Himalayan knotweed	<i>Polygonum polystachyum</i>	A-Eradicate
Japanese butterbur	<i>Petasites japonicus</i>	A-Eradicate
Japanese knotweed	<i>Fallopia japonica</i>	A-Eradicate
Marsh plume thistle	<i>Cirsium palustre</i>	A-Eradicate
Meadow knapweed	<i>Centaurea x moncktonii</i>	A-Eradicate
Myrtle spurge	<i>Euphorbia myrsinites</i>	A-Eradicate
Nodding thistle	<i>Carduus nutans</i>	A-Eradicate
Orange hawkweed	<i>Hieracium aurantiacum</i>	A-Eradicate
Perennial pepperweed	<i>Lepidium latifolium</i>	A-Eradicate
Persian cornflower	<i>Centaurea dealbata</i>	A-Eradicate
Phragmites		A-Eradicate
Plumeless thistle	<i>Carduus acanthoides</i>	A-Eradicate
Poison hemlock	<i>Conium maculatum</i> L	A-Eradicate
Puncturevine	<i>Tribulus terrestris</i>	A-Eradicate
Purple loosestrife	<i>Lythrum salicaria</i>	A-Eradicate
Queen Annes lace	<i>Daucus carota</i>	A-Eradicate
Rush skeletonweed	<i>Chondrilla juncea</i>	A-Eradicate
Scotch broom	<i>Cytisus scoparius</i>	A-Eradicate
Scotch thistle	<i>Onopordum acanthium</i>	A-Eradicate
Sweet fennel	<i>Foeniculum vulgare</i>	A-Eradicate
Tansy ragwort	<i>Senecio jacobaea</i>	A-Eradicate
Teasel	<i>Dipsacus fullonum</i>	A-Eradicate
Tree of Heaven	<i>Ailanthus altissima</i>	A-Eradicate
Whiplash hawkweed	<i>Hieracium flagellare</i>	A-Eradicate
Wild 4 O'clock	<i>Mirabilis nyctaginea</i>	A-Eradicate
Wild chervil	<i>Anthriscus sylvestris</i>	A-Eradicate
Wild parsnip	<i>Pastinaca sativa</i>	A-Eradicate
Yellow bedstraw	<i>Galium verum</i>	A-Eradicate

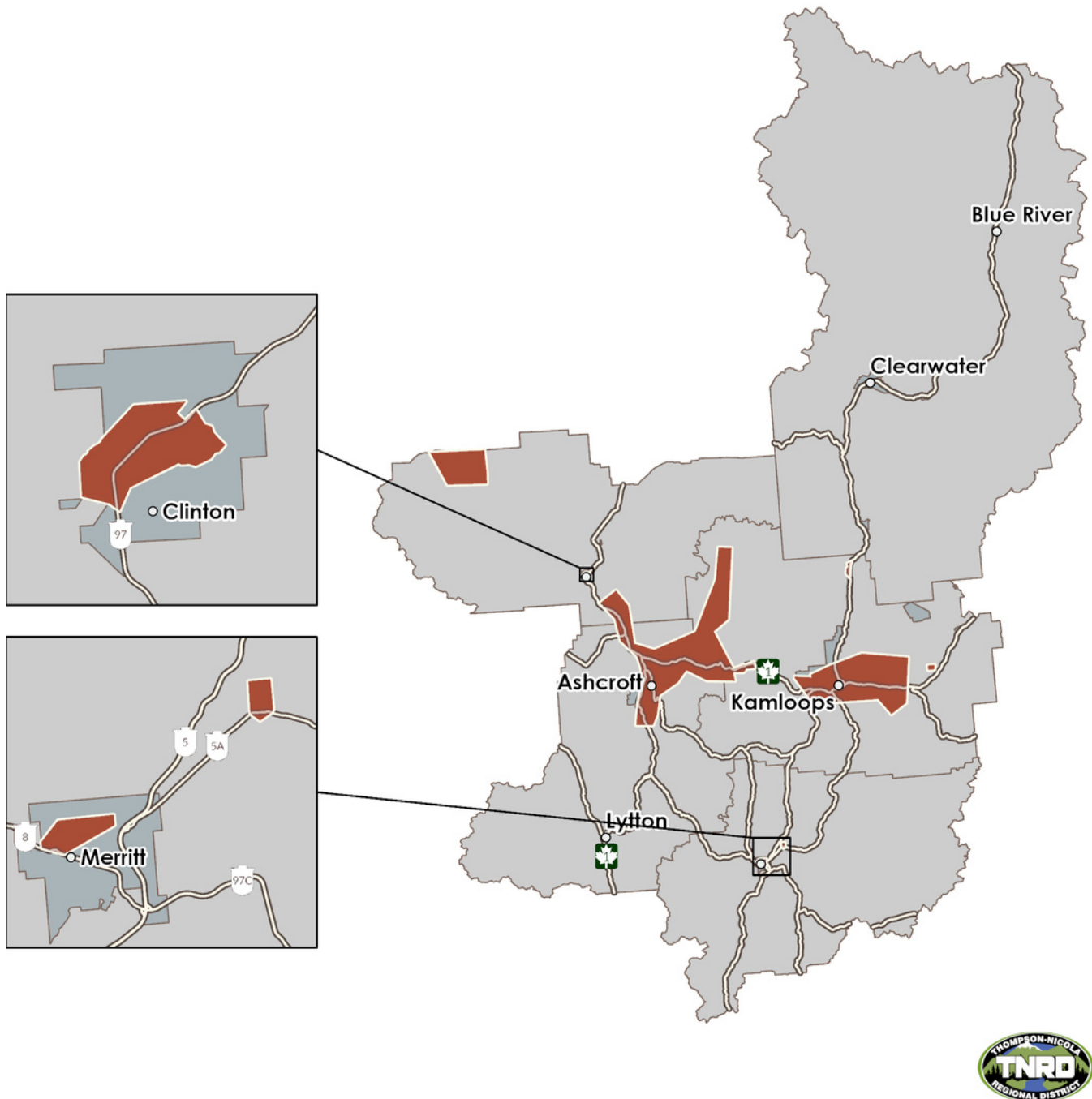
Common tansy	<i>Tanacetum vulgare</i>	B-Control
Hoary alyssum	<i>Berteroa incana</i>	B-Control
Hoary cress	<i>Cardaria spp.</i>	B-Control
St. Johns wort	<i>Hypericum perforatum</i>	B-Control
Yellow flag iris	<i>Iris pseudacorus</i>	B-Control
Baby's breath	<i>Gypsophila paniculata</i>	C- Contain & Site Specific Control
Blueweed	<i>Echium vulgare</i>	C- Contain & Site Specific Control
Leafy spurge	<i>Euphorbia esula</i>	C- Contain & Site Specific Control
Meadow goat's beard	<i>Tragopogon pratensis</i>	C- Contain & Site Specific Control
Russian knapweed	<i>Centaurea repens</i>	C- Contain & Site Specific Control
Bladder campion	<i>Silene cucubalus</i>	D- Monitor & Site Specific Control
Bull thistle	<i>Cirsium vulgare</i>	D- Monitor & Site Specific Control
Bur buttercup	<i>Ranunculus testiculatus</i>	D- Monitor & Site Specific Control
Burdock	<i>Arctium minus</i>	D- Monitor & Site Specific Control
Canada thistle	<i>Cirsium vulgare</i>	D- Monitor & Site Specific Control
Chicory	<i>Cichorium intybus</i>	D- Monitor & Site Specific Control
Chinese boxthorn	<i>Lycium barbarum</i>	D- Monitor & Site Specific Control
Common toadflax	<i>Linaria vulgaris</i>	D- Monitor & Site Specific Control
Dalmatian toadflax	<i>Linaria dalmatica</i>	D- Monitor & Site Specific Control
Diffuse knapweed	<i>Centaurea diffusa</i>	D- Monitor & Site Specific Control
Field bindweed	<i>Convolvulus arvensis</i>	D- Monitor & Site Specific Control
Hounds tongue	<i>Cynoglossum officinale</i>	D- Monitor & Site Specific Control
Mountain bluet	<i>Centaurea montana</i>	D- Monitor & Site Specific Control
Night flowering catchfly	<i>Silene noctiflora</i>	D- Monitor & Site Specific Control
Oxeye daisy	<i>Leucanthemum vulgare</i>	D- Monitor & Site Specific Control
Russian olive	<i>Elaeagnus angustifolia</i>	D- Monitor & Site Specific Control
Scentless chamomile	<i>Matricaria maritima</i>	D- Monitor & Site Specific Control
Spotted knapweed	<i>Centaurea maculosa</i>	D- Monitor & Site Specific Control
Sulphur cinquefoil	<i>Potentilla recta</i>	D- Monitor & Site Specific Control
Western goat's beard	<i>Tragopogon dubius</i>	D- Monitor & Site Specific Control
Yellow hawkweed species		D- Monitor & Site Specific Control

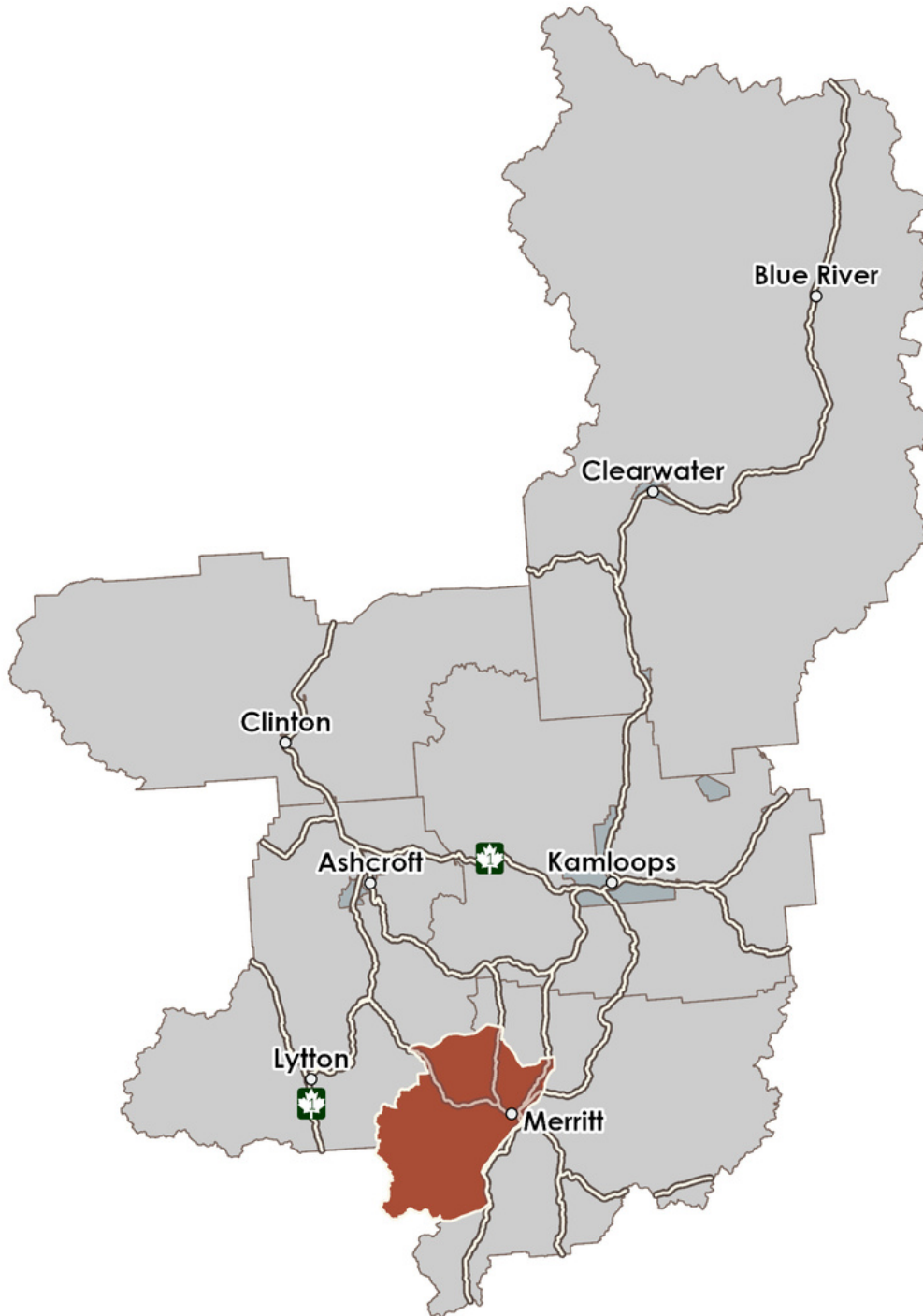
APPENDIX II

REGIONAL CONTAINMENT AREAS



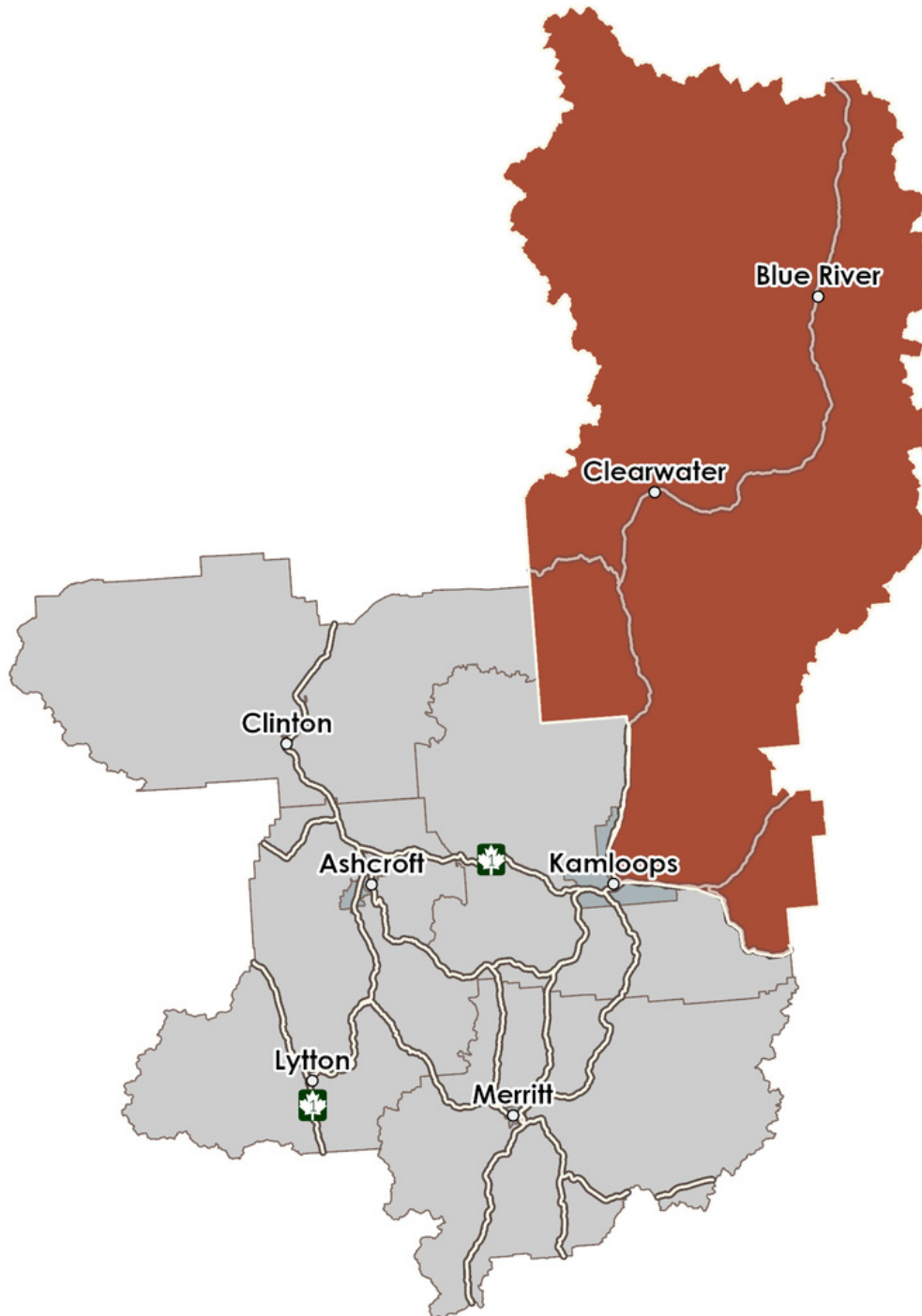
BABY'S BREATH



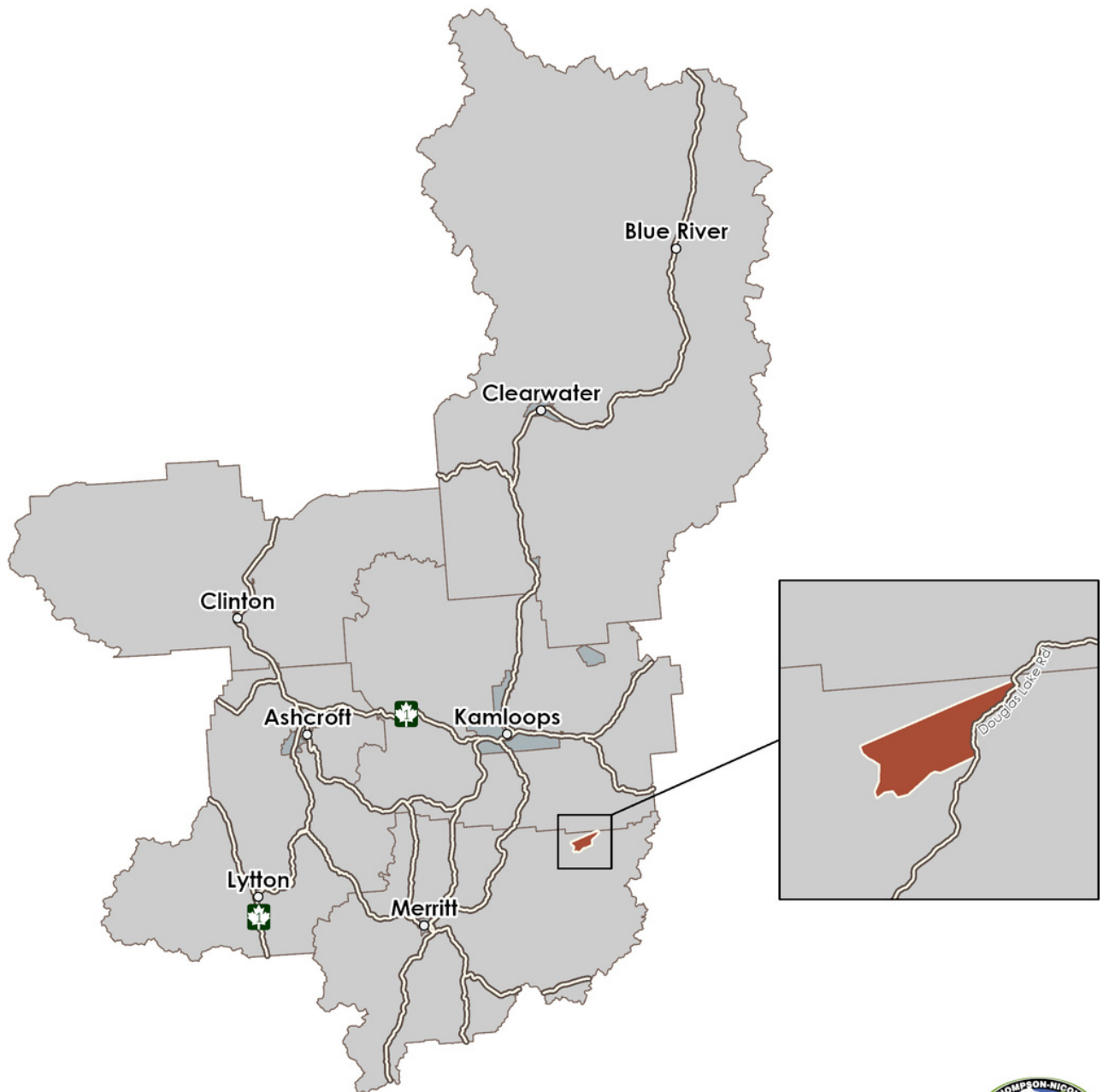


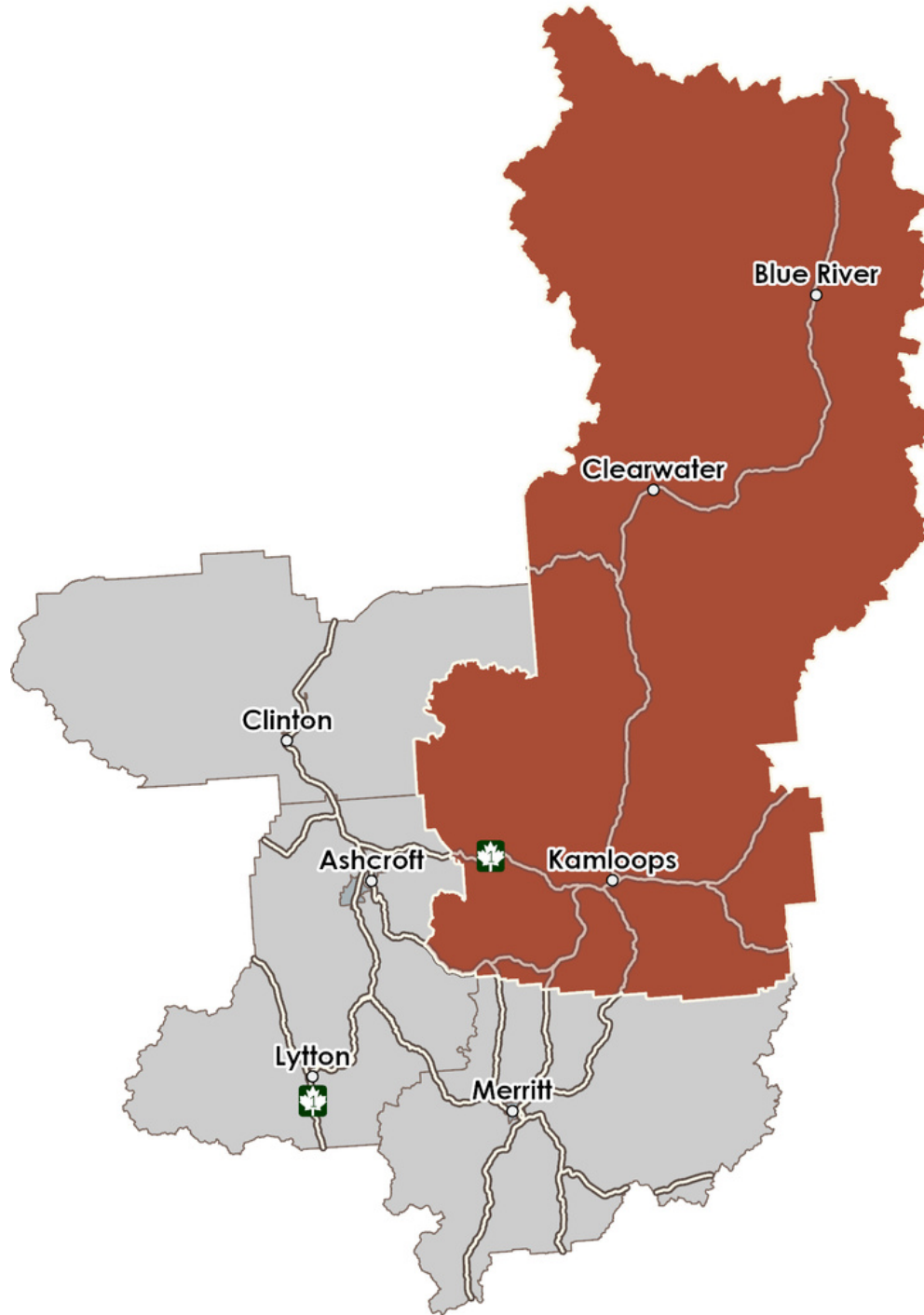


COMMON TANSY

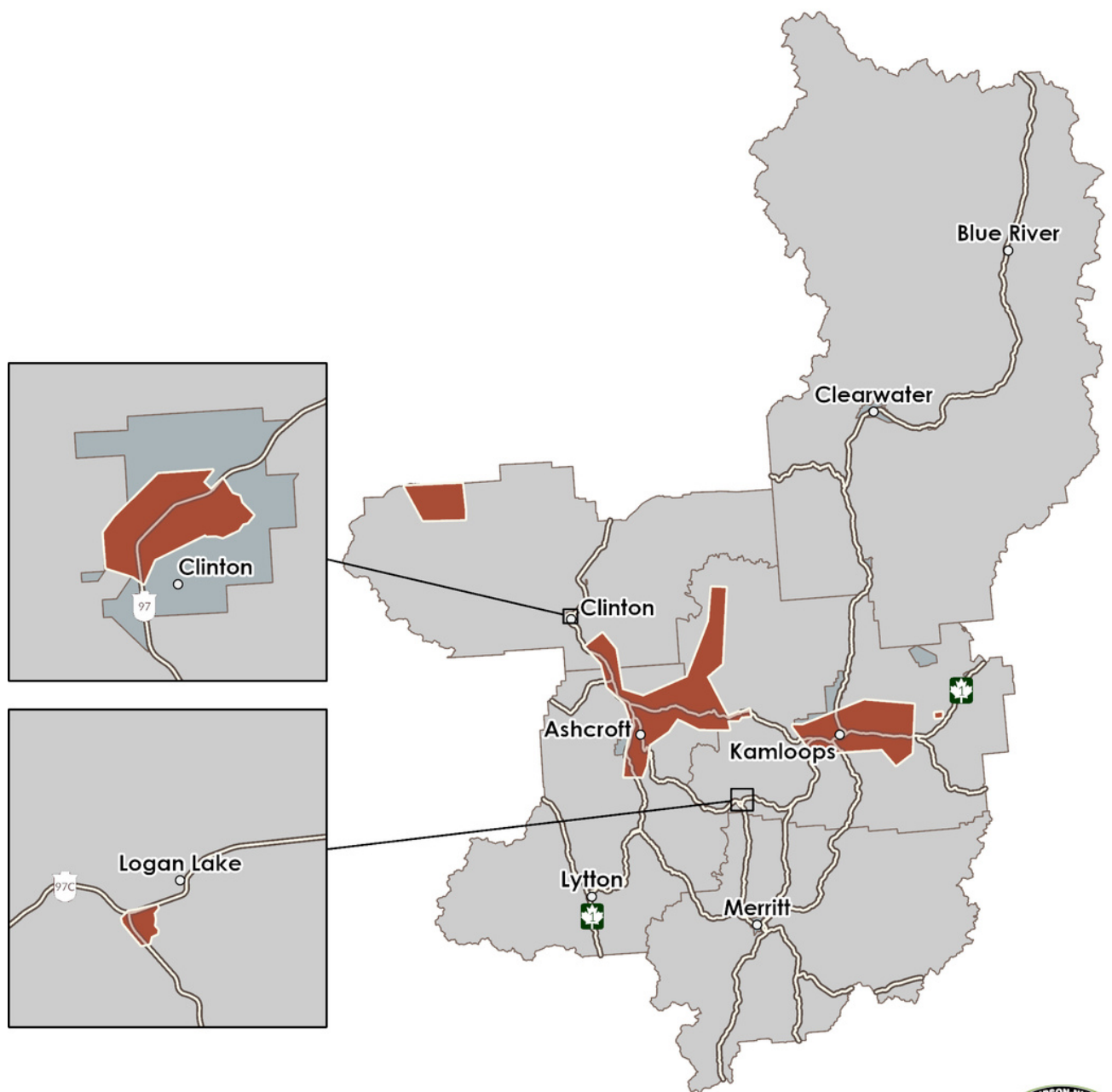


FIELD SCABIOUS

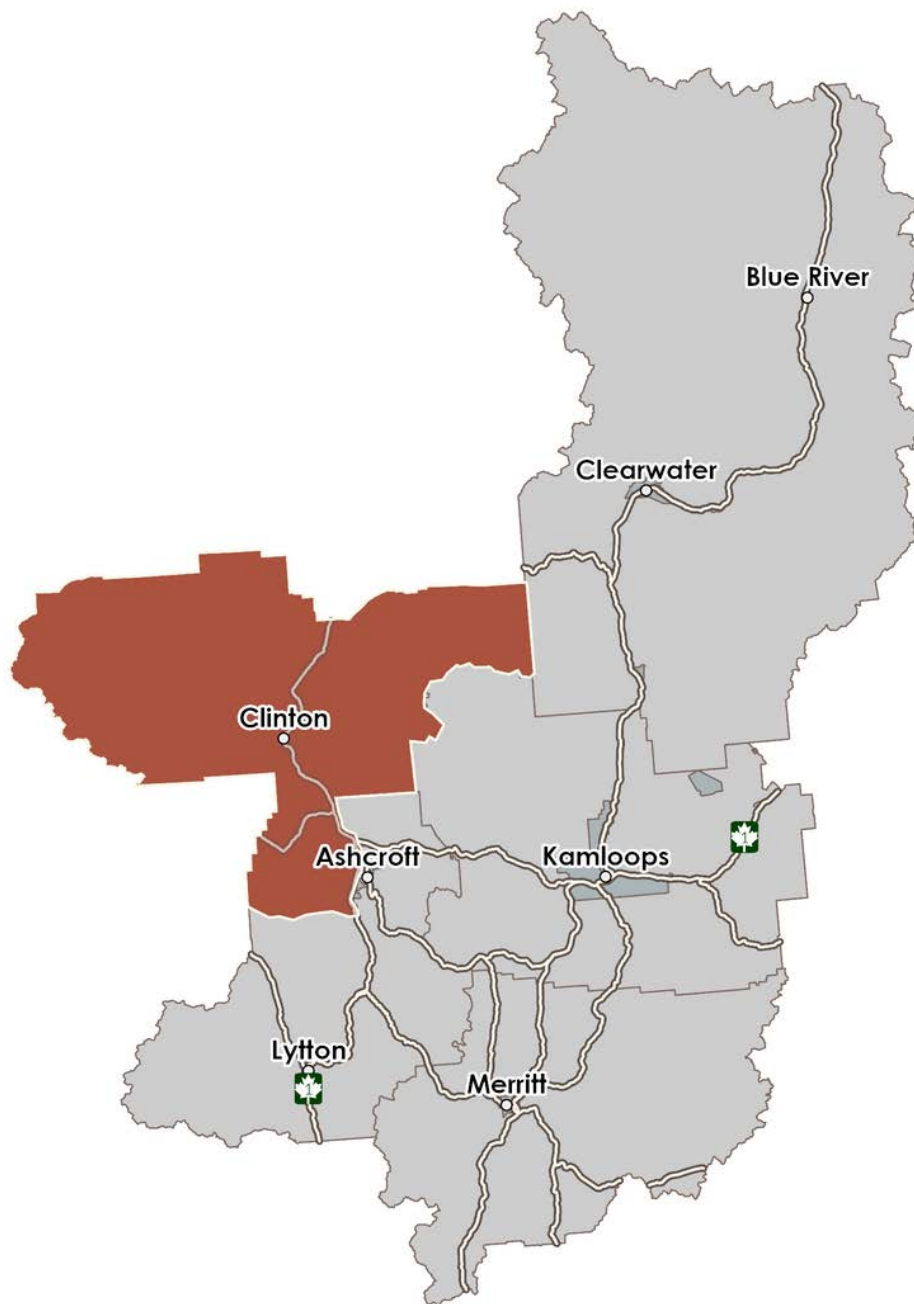


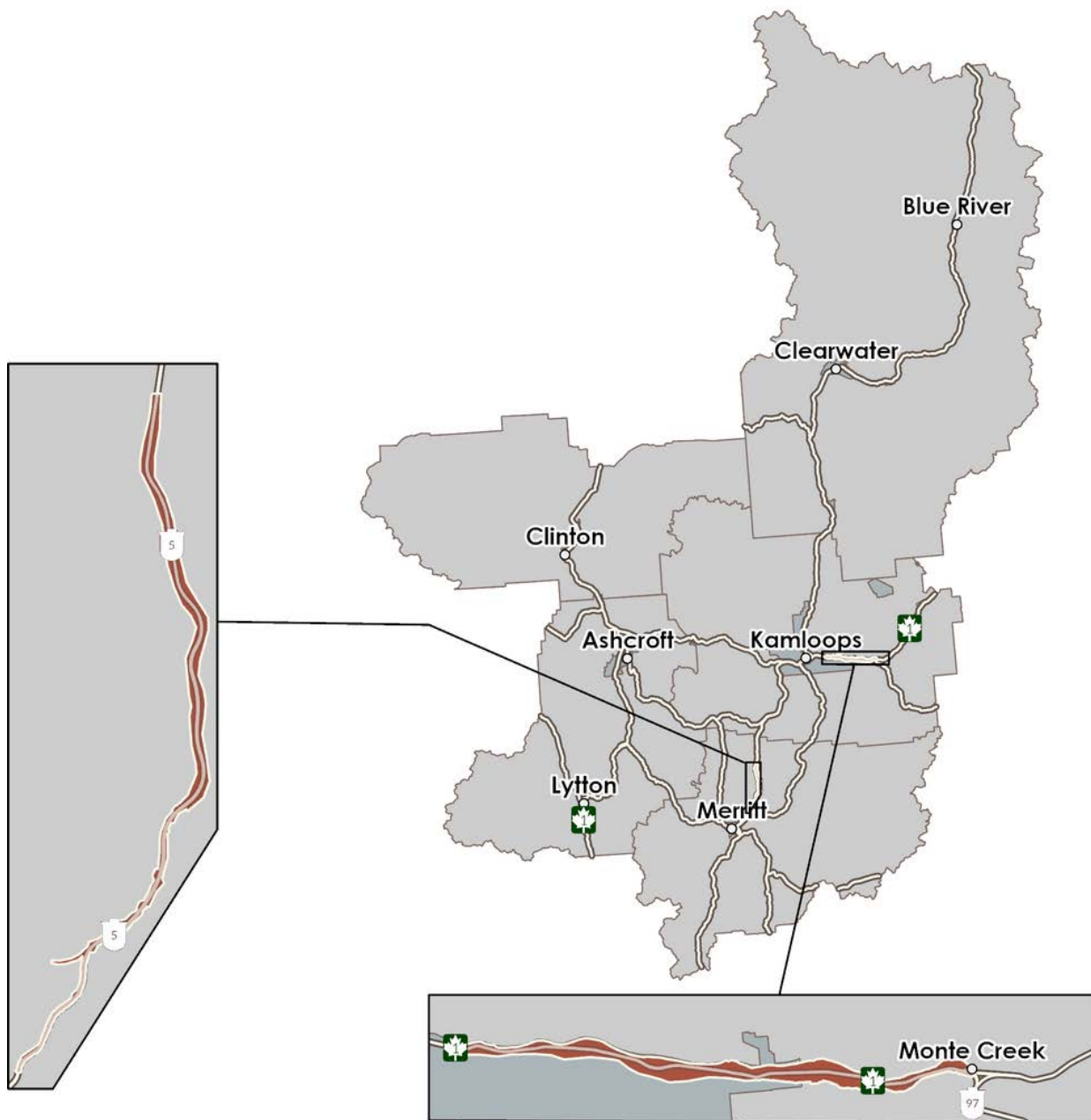


LEAFY SPURGE

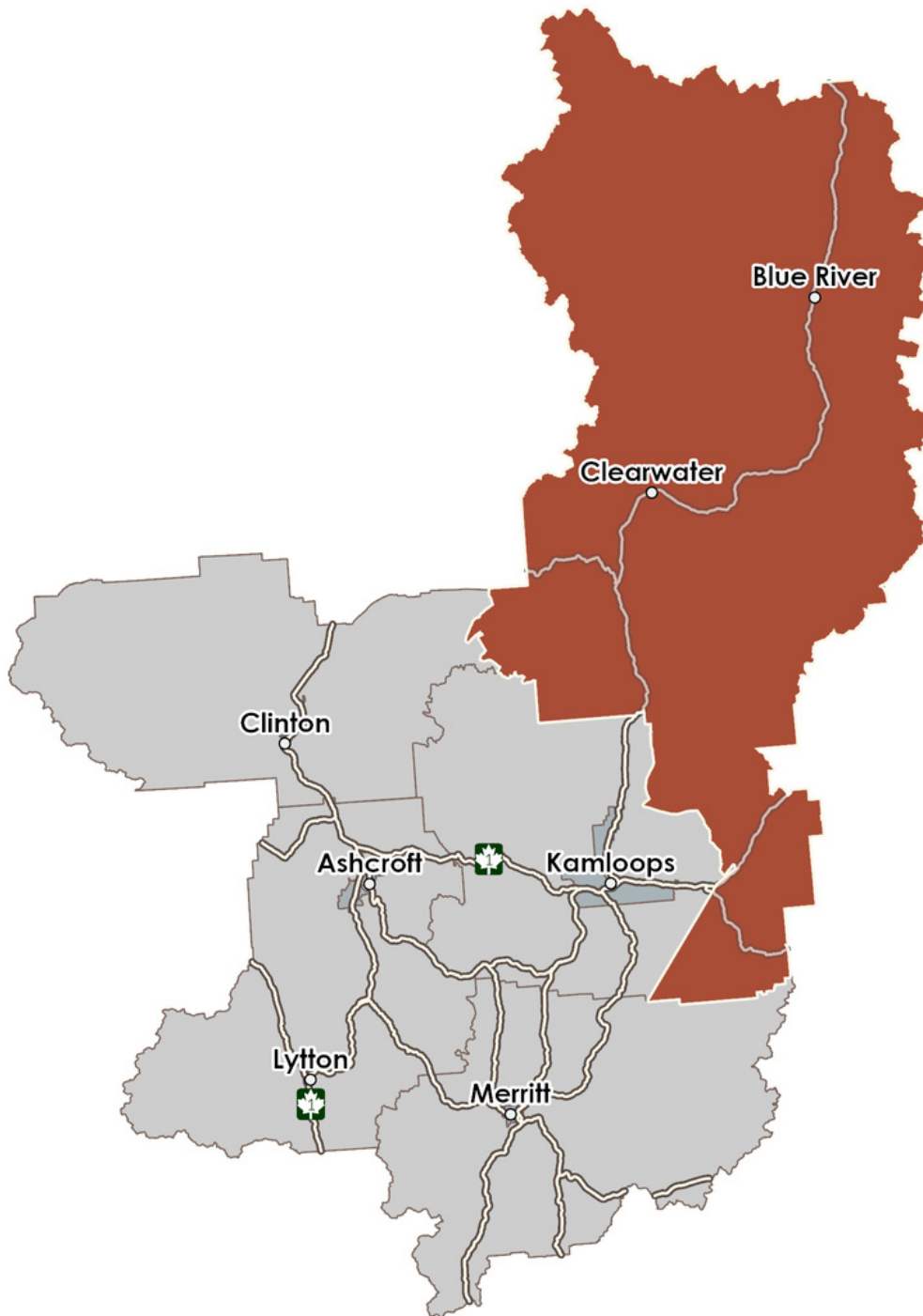


MEADOW GOAT'S BEARD



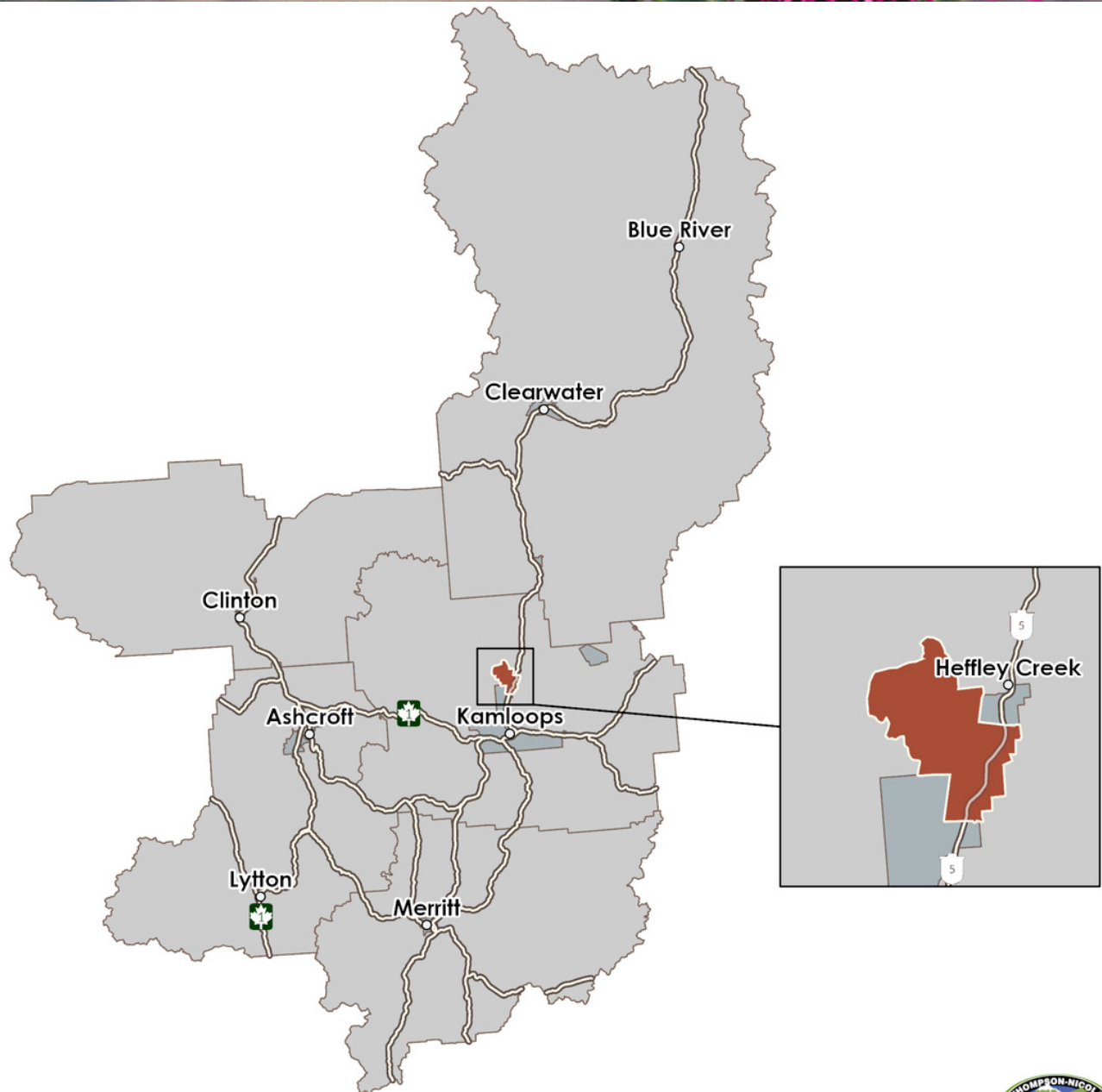


ORANGE HAWKWEED

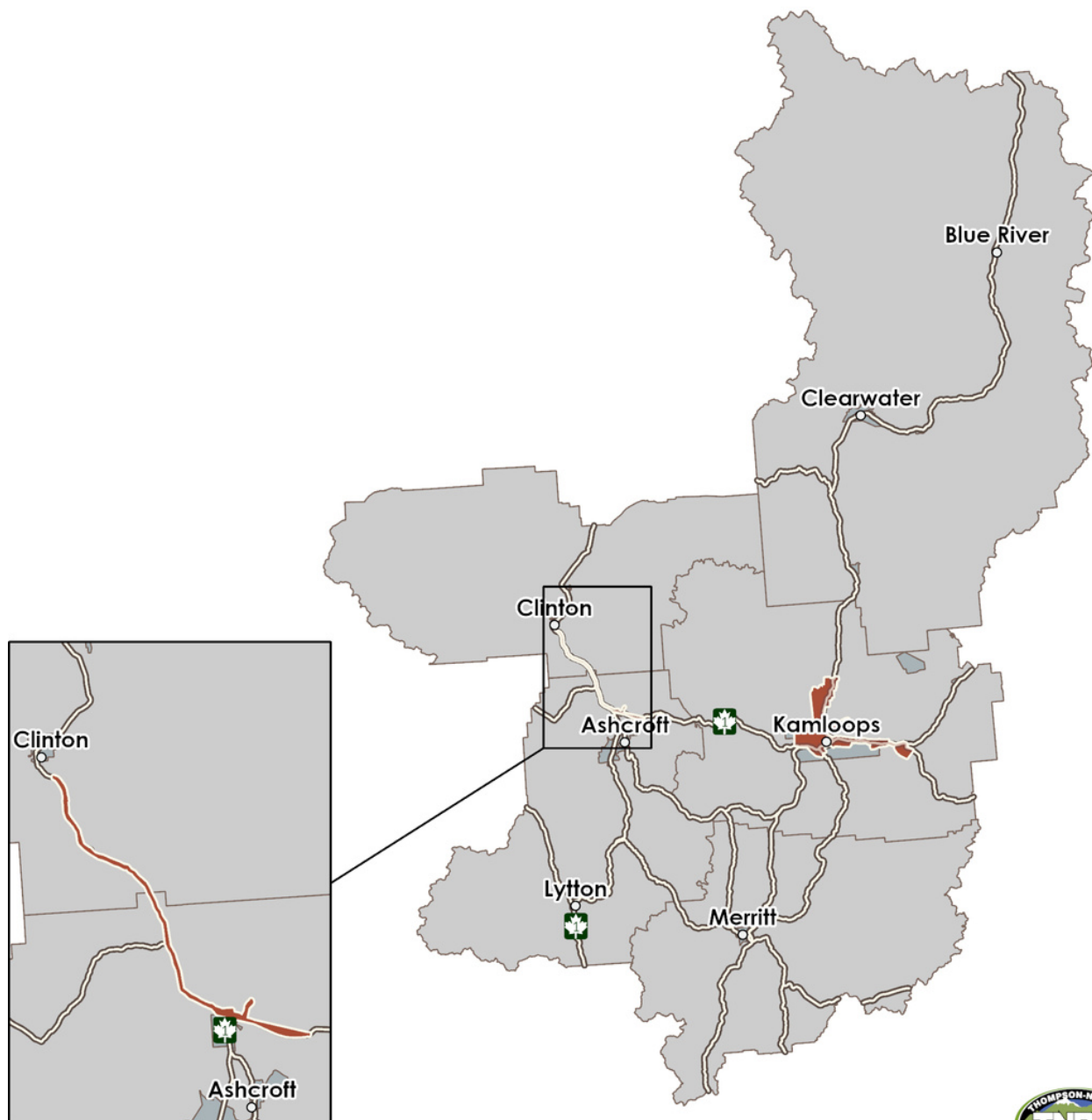


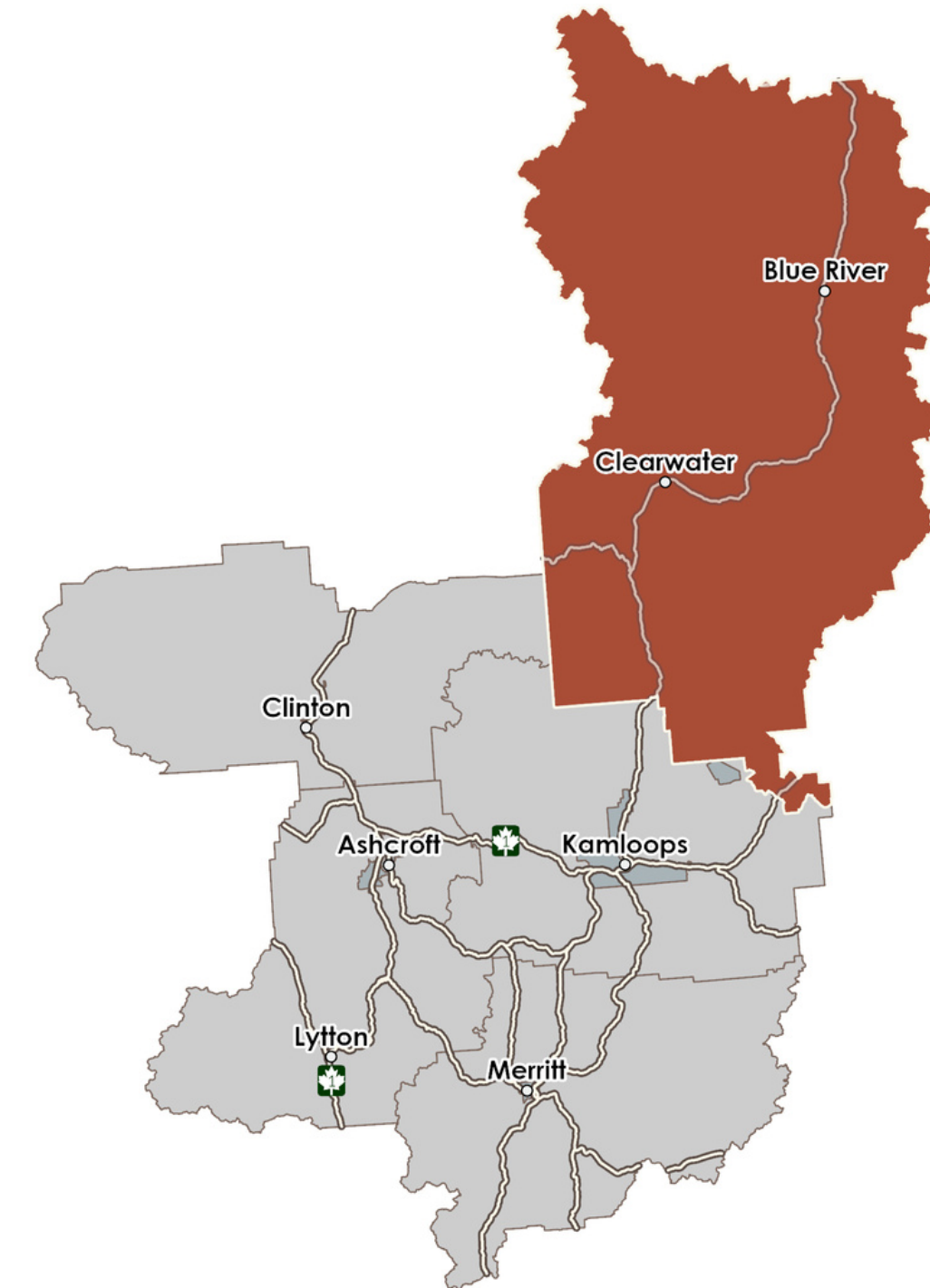


PLUMELESS THISTLE



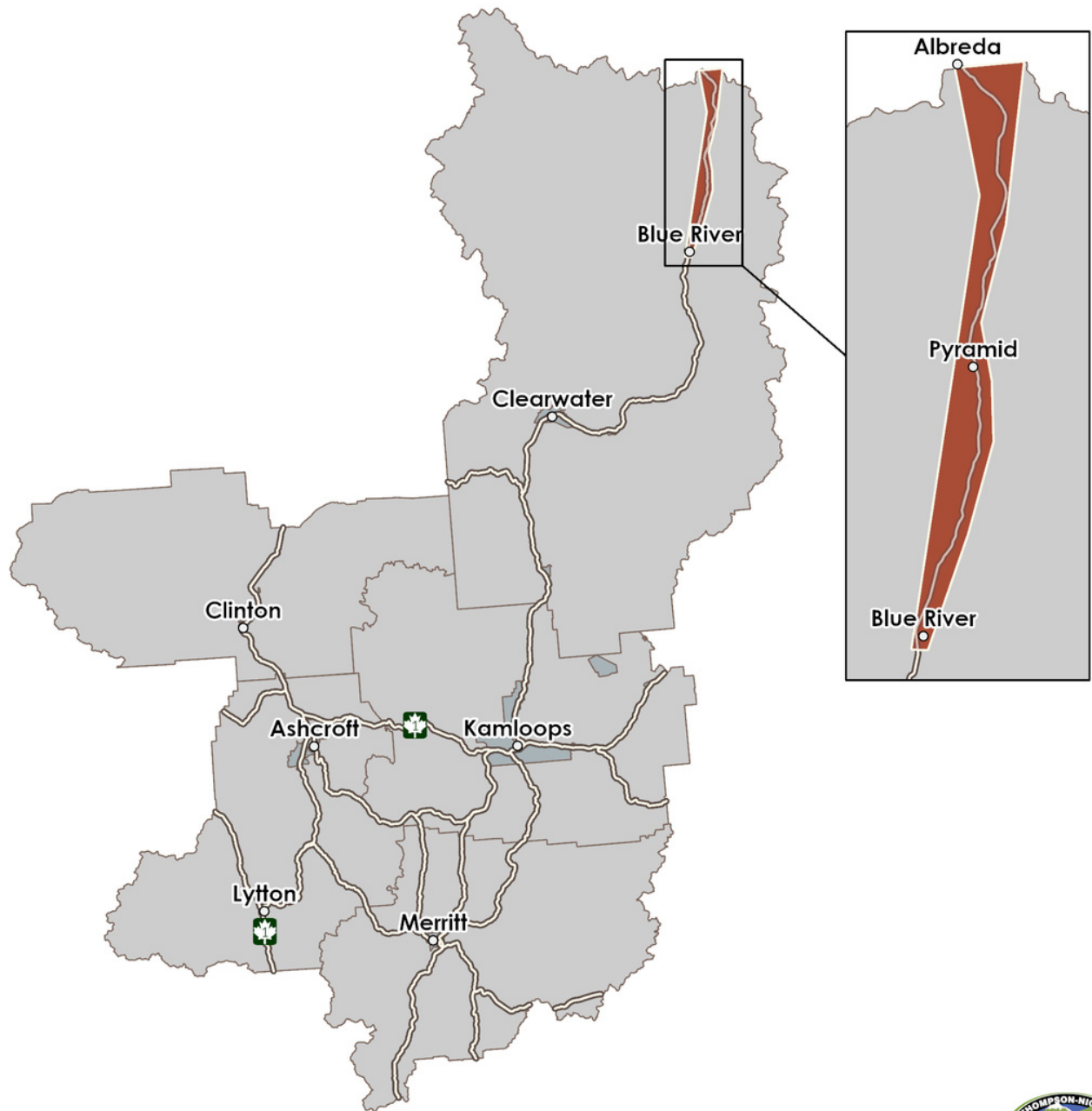
RUSSIAN KNAPWEED



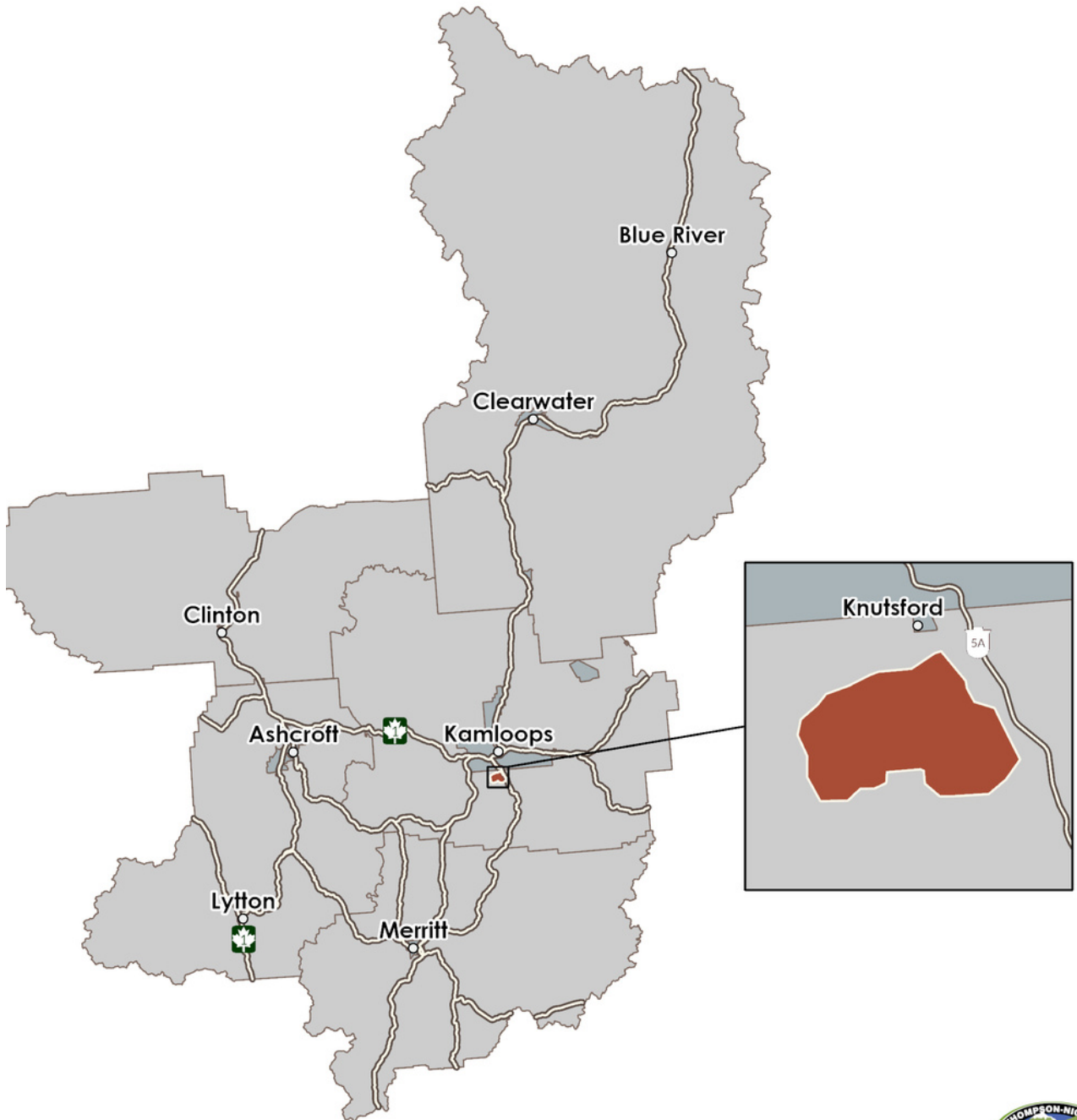




WHIPLASH HAWKWEEED

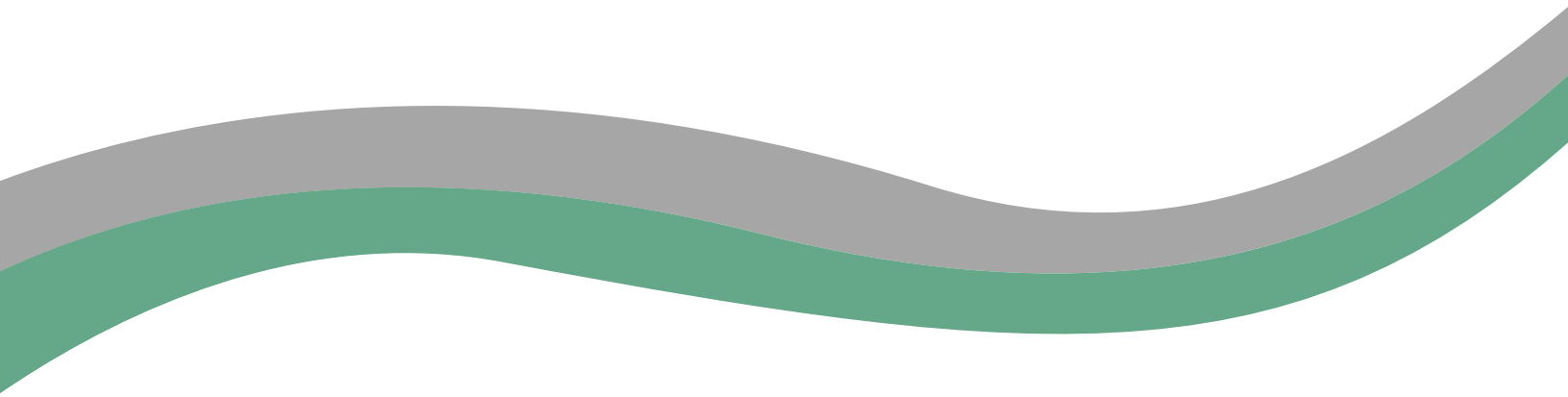


YELLOW BEDSTRAW



APPENDIX III

Additional Invasive Plants in the Thompson- Nicola Region



Common Name	Latin Name	Status
Alfalfa	<i>Medicago sativa</i>	Widespread
American Black Nightshade	<i>Solanum americanum</i>	More inventory required
American elm*	<i>Ulmus americana</i>	More inventory required
Annual Hawksbeard	<i>Crepus tectorum</i>	Widespread, low impact
Annual Sow thistle	<i>Sonchus oleraceus</i>	Low impact
Bachelors Button	<i>Centaurea cyanus</i>	Low impact
Bittersweet nightshade	<i>Solanum dulcamara</i>	More inventory required
Black cherry*	<i>Prunus serotina</i>	More inventory required
Black locust	<i>Robinia pseudoacacia</i>	More inventory required
Black Nightshade	<i>Solanum nigrum</i>	More inventory required
Blue Flax	<i>Linum perenne</i>	More inventory required
Bouncing-bett	<i>Saponaria officinalis</i>	Limited distribution, low impact
Buffalo bur	<i>Solanum rostratum</i>	More inventory required
Bulbous bluegrass	<i>Poa bulbosa</i>	More inventory required
Cheat grass	<i>Bromus tectorum</i>	Widespread
Cherry-laurel*	<i>Prunus laurocerasus</i>	More inventory required
Chinaberry*	<i>Melia azedarach</i>	More inventory required
Chinese Elm*	<i>Ulmus parvifolia</i>	More inventory required
Cluster pine or Maritime pine*	<i>Pinus pinaster</i> Aiton	More inventory required
Common comfrey	<i>Symphytum officinale</i>	Limited distribution, low impact
Common Dodder	<i>Cuscuta epithymum</i>	More inventory required
Common Evening Primrose	<i>Oenothera biennis</i>	More inventory required
Common hawthorn*	<i>Crataegus monogyna</i>	More inventory required
Common Mallow	<i>Malva neglecta</i>	More inventory required
Common Reed	<i>Phragmites australis</i>	More inventory required
Common Reed	<i>Campanula rapunculoides</i>	Limited distribution
Common Storks Bill	<i>Erodium cicutarium</i>	More inventory required
Creeping buttercup	<i>Ranunculus repens</i>	Widespread, low impact
Curled Dock	<i>Rumex crispus</i>	Widespread, low impact
Cut-leaved nightshade	<i>Solanum triflorum</i>	More inventory required
Eastern Nightshade	<i>Solanum emulans</i>	More inventory required
English holly	<i>Ilex aquifolium</i>	Not likely to occur in region
English Ivy	<i>Hedera helix</i>	Not likely to occur in region

* Species not known to occur within the Thompson-Nicola Region

English or Common elm*	<i>Ulmus procera</i>	More inventory required
European hawkweed	<i>Hieracium lachenalii</i>	Widespread
Eyebright	<i>Euphrasia nemorosa</i>	More inventory required
February Daphne	<i>Daphne mezereum</i>	More inventory required
German madwort	<i>Asperugo procumbens</i>	Widespread
Golden chain tree*	<i>Laburnum anagyroides</i>	More inventory required
Golden clematis	<i>Clematis tangutica</i>	More inventory required
Golden Willow*	<i>Salix alba 'Vitellina'</i>	More inventory required
Goldmoss stonecrop	<i>Sedum acre</i>	More inventory required
Gorse	<i>Ulex europaeus</i>	More inventory required
Green Foxtail	<i>Setaria viridis</i>	More inventory required
Groundsel	<i>Senecio vulgaris</i>	More inventory required
Hairy cat's ear	<i>Hypochaeris radicata</i>	More inventory required
Hairy nightshade	<i>Solanum physalifolium</i>	More inventory required
Hedge false bindweed	<i>Calystegia sepium</i>	Widespread, low impact
Japanese raisin tree*	<i>Hovenia dulcis</i>	More inventory required
King Devil Hawkweed	<i>Hieracium floribundum</i>	More inventory required
Kochia	<i>Kochia scoparia</i>	Widespread, low impact
Lens Podded Hoary Cress	<i>Cardaria chalepensis</i>	More inventory required
Lens Podded Hoary Cress	<i>Ranunculus acris</i>	More inventory required
Mullein	<i>Verbascum thapsus</i>	Widespread, low impact
Norway maple*	<i>Acer platanoides</i>	Widespread
Perennial Sow thistle	<i>Sonchus arvensis</i>	Widespread, low impact
Princess tree or Royal Paulownia	<i>Paulownia tomentosa</i>	Widespread
Reed Canary Grass	<i>Phalaris arundinacea</i>	Widespread
Round Leaved Mallow	<i>Malva pusilla</i>	More inventory required
Russian Thistle	<i>Elaeagnus angustifolia</i>	Widespread, low impact
Russian Thistle	<i>Salsola tragus</i>	Widespread
Sheep Sorrel	<i>Rumex acetosella</i>	More inventory required
Siberian elm	<i>Ulmus pumila</i>	More inventory required
Squarrose knapweed	<i>Centaurea virgata</i>	More inventory required
Staghorn sumac	<i>Rhus typhina</i>	More inventory required
Tamarisk	<i>Tamarix ramosissima</i>	More inventory required

* Species not known to occur within the Thompson-Nicola Region

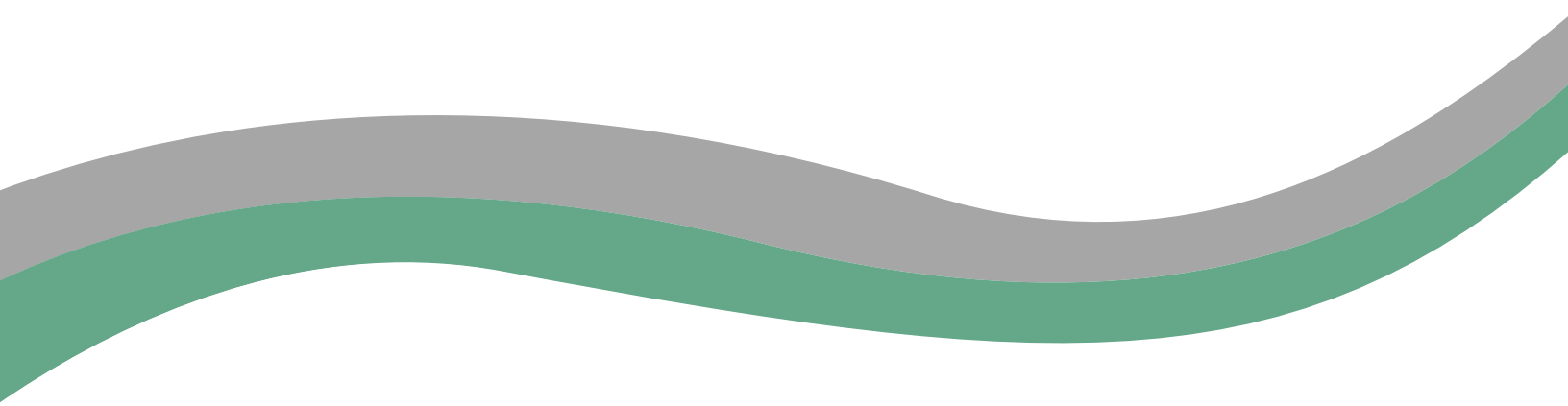
White Cockle	<i>Silene latifolia</i>	More inventory required
White poplar*	<i>Populus alba</i>	More inventory required
White Sweet clover	<i>Melilotus albus</i>	Widespread
Wild Buckwheat	?	More inventory required
Wild Mustard	<i>Tribulus terrestris</i>	Widespread, low impact
Wormwood	<i>Artemisia absinthium</i>	Widespread, low impact
Wych or Scots Elm*	<i>Ulmus glabra</i>	More inventory required
Yellow chamomile/Golden Marguerite	<i>Cota tinctoria</i>	More inventory required

* Species not known to occur within the Thompson-Nicola Region

APPENDIX IV

Priority Invasive Plants in the Thompson-Nicola Region

Printable Summary

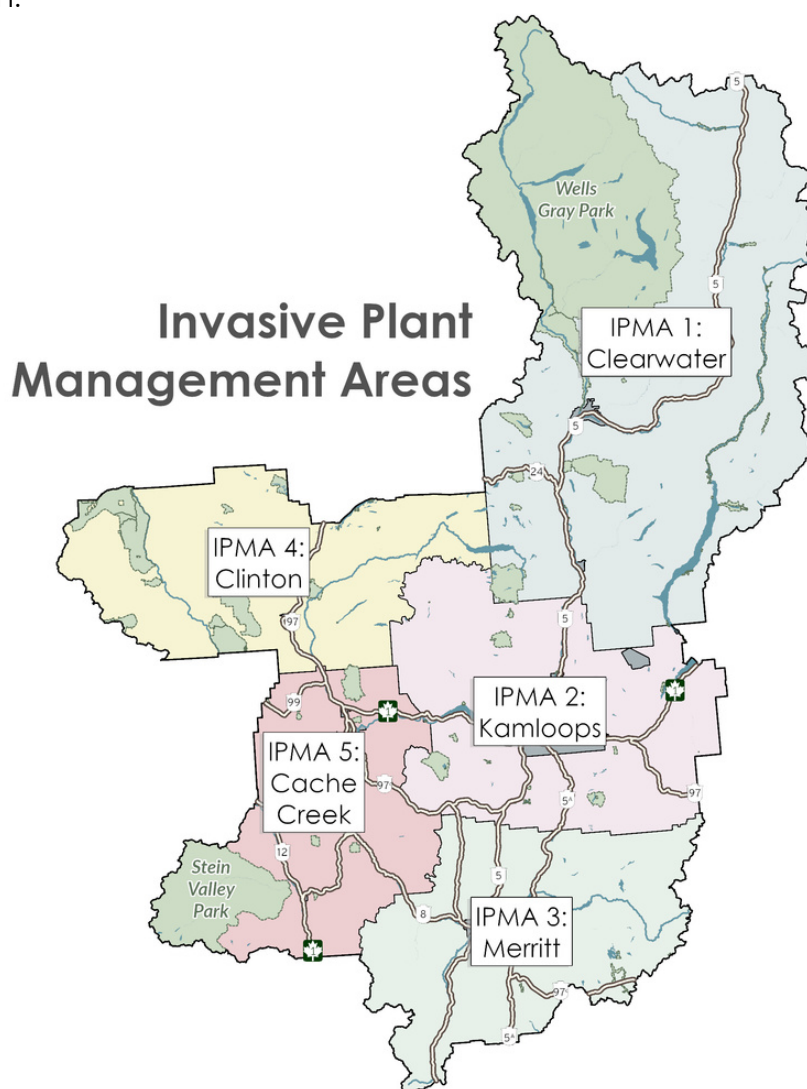


OPERATIONAL PLAN FOR INVASIVE PLANT MANAGEMENT IN THE THOMPSON- NICOLA REGION



The Operational Plan For Invasive Plant Management in the Thompson-Nicola Region, as a tool to enhance cross jurisdiction collaboration and coordination of invasive plants within the region.

The following information is a summary of the plan, which was developed to enhance cross jurisdiction coordination for invasive plant management within the Thompson-Nicola Region.



INVASIVE PLANT CATEGORIES & MANAGEMENT OBJECTIVES



The following table lists the invasive plant categories, management objectives and management expectations for the priority invasive species included in this plan. Each priority invasive plant in the region has been assigned to a category based on the outcomes of a risk assessment and current distribution across the region/IPMA.

It is recognized that invasive plant management goals will vary at regional and local scales. It is important to clarify that resource investment may vary between categories for each land manager, depending on their land management objectives.

PREVENT

Early detection of newly arrived invasive species, followed by a well-coordinated rapid response, will increase the likelihood of eradicating new invasions of plants in this category. Plants within the "Prevent" category have not been confirmed within the Thompson-Nicola Region. These species pose high risk to the province, region and/or IPMA. It is expected that land managers prioritize these species for surveillance and carry out best management practices to prevent these plants from establishing on their lands. All species within this category should be immediately reported to the TNIPMC who will assist in coordinating an immediate management response:

- Email: invasiveplants@tnrd.ca
- Phone: 1-877-377-8673

A ERADICATE

Plants listed in this category are are present in very limited distribution. These species pose high risk to the province, region and/or IPMA and it is expected that land managers control infestations as soon as they are noted. Annual monitoring and treatment is required until the infestation can be deemed eradicated. All species within this category should be immediately reported to the TNIPMC who will assist in coordinating an immediate management response:

- Email: invasiveplants@tnrd.ca
- Phone: 1-877-377-8673

INVASIVE PLANT CATEGORIES & MANAGEMENT OBJECTIVES



B CONTROL

Category B species are known to exist in the region/IPMA in limited distribution. If left untreated, these plants have significant potential to spread throughout the region/IPMA. Control to prevent spread can be achieved through annual treatment and monitoring of ALL infestations in the region/IPMA.

C CONTAIN & SITE SPECIFIC CONTROL

Category C species are present in abundance throughout the region/IPMA but they have not yet infested all potential habitats. Eradication of these plants is not likely however management can still take place in areas that are highly valued and/or are relatively invasive free.

The containment areas for select category C species is available in Appendix II . It is expected that land managers control all invasive plants outside of the containment area and may choose to control select infestations within the containment area to protect specific land values.

Land manager managers may choose to create their own containment areas to protect certain values. Similarly, it is expected land managers control all invasive plants outside of these containment area.

D- MONITOR & SITE SPECIFIC CONTROL

Category D species are common and widespread, occupying most or all potential habitats within the region/IPMA. Widespread control of these species is not currently possible unless funding and resources are significantly increased. In this category, management efforts are carried out to prevent spread into un-infested habitat and protect local area land values. It is expected that land managers will monitor the impact of the species on local area land values and carry out control based on specific land management objectives. The use of biological control may be considered where agents are available.

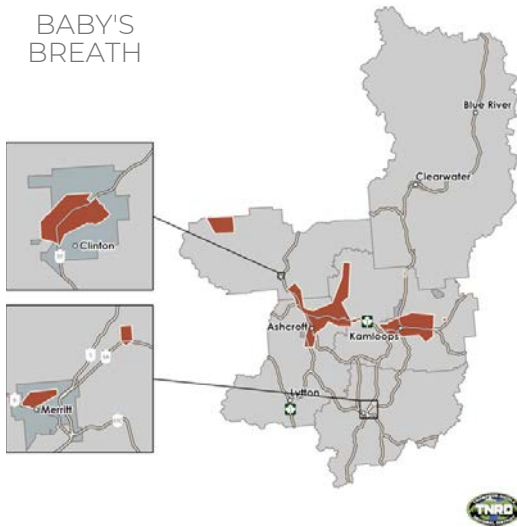
PRIORITY INVASIVE PLANTS BY INVASIVE PLANT MANAGEMENT AREA IN THE THOMPSON- NICOLA REGION

Common Name	Latin Name	Regional	IPMA 1 Clearwater	IPMA 2 Kamloops	IPMA 3 Merritt	IPMA 4 Clinton	IPMA 5 Cache Creek
Baby's breath	<i>Gypsophila paniculata</i>	C	A	C	C	B	C
Bighead knapweed	<i>Centaurea macrocephala</i>	B	A	A	B	A	A
Black henbane	<i>Hyoscyamus niger</i>	A	A	A	A	A	A
Black knapweed	<i>Centaurea nigra</i>	A	A	A	A	A	A
Bladder campion	<i>Silene cucubalus</i>	D	D	D	D	D	D
Blueweed	<i>Echium vulgare</i>	C	A	B	C	B	C
Bohemian knotweed	<i>Fallopia x bohemica</i>	A	A	A	A	A	A
Brown knapweed	<i>Centaurea jacea</i>	A	A	A	A	A	A
Bulbous bluegrass	<i>Poa bulbosa</i>	C	A	C	A	C	A
Bull thistle	<i>Cirsium vulgare</i>	D	D	D	D	D	D
Bur buttercup	<i>Ranunculus testiculatus</i>	D	D	D	D	D	D
Bur chervil	<i>Anthriscus caucalis</i>	P	P	P	P	P	P
Burdock	<i>Arctium minus</i>	D	D	D	D	D	D
Canada thistle	<i>Cirsium vulgare</i>	D	D	D	D	D	D
Caraway	<i>Carum carvi</i>	A	A	A	A	A	A
Carpet burweed	<i>Soliva sessilis</i>	A	A	A	A	A	A
Chameleon plant	<i>Houttuynia cordata</i>	P	P	P	P	P	P
Chicory	<i>Cichorium intybus</i>	D	D	D	D	D	D
Chinese boxthorn	<i>Lycium barbarum</i>	D	D	D	D	D	D
Common bugloss	<i>Anchusa officinalis</i>	A	A	A	A	A	A
Common cocklebur	<i>Xanthium orientale</i>	A	A	A	A	A	A
Common crupina	<i>Crupina vulgaris</i>	P	P	P	P	P	P
Common tansy	<i>Tanacetum vulgare</i>	C	C	C	B	B	B
Common toadflax	<i>Linaria vulgaris</i>	D	D	D	D	D	D
Cutleaf blackberry	<i>Rubus laciniatus</i>	A	A	A	A	A	A
Cypress spurge	<i>Euphorbia cyparissias</i>	A	A	A	A	A	A
Dalmatian toadflax	<i>Linaria dalmatica</i>	D	D	D	D	D	D
Dame's rocket	<i>Hesperis matronalis</i>	A	A	A	A	A	A
Diffuse knapweed	<i>Centaurea diffusa</i>	D	D	D	D	D	D
Fernleaf yarrow	<i>Achillea filipendulina</i>	A	A	A	A	A	A
Field bindweed	<i>Convolvulus arvensis</i>	D	D	D	D	D	D
Field scabious	<i>Knautia arvensis</i>	C	A	A	C	A	A
Garden yellow loosestrife	<i>Lysimachia vulgaris</i>	A	A	A	A	A	A
Garlic mustard	<i>Alliaria petiolata</i>	P	P	P	P	P	P
Giant hogweed	<i>Heracleum mantegazzianum</i>	P	P	P	P	P	P
Giant knotweed	<i>Fallopia sachalinensis</i>	A	A	A	A	A	A
Giant Mannagrass/Reed Sweetgrass*	<i>Glyceria maxima</i>	P	P	P	P	P	P
Himalayan balsam	<i>Impatiens glandulifera</i>	A	A	A	A	A	A
Himalayan blackberry	<i>Rubus armeniacus</i>	A	A	A	A	A	A
Himalayan knotweed	<i>Polygonum polystachyum</i>	A	A	A	A	A	A
Hoary alyssum	<i>Berteroa incana</i>	C	C	C	B	B	B
Hoary cress	<i>Cardaria spp.</i>	B	A	B	B	A	B

Hounds tongue	<i>Cynoglossum officinale</i>	D	D	D	D	D	D
Italian arum	<i>Arum italicum</i>	P	P	P	P	P	P
Japanese butterbur	<i>Petasites japonicus</i>	A	A	A	A	A	A
Purple nutsedge	<i>Cyperus rotundus</i>	P	P	P	P	P	P
Queen Annes lace	<i>Daucus carota</i>	A	A	A	A	A	A
Rush skeletonweed	<i>Chondrilla juncea</i>	A	A	A	A	A	A
Russian knapweed	<i>Centaurea repens</i>	C	A	C	B	C	C
Russian olive	<i>Elaeagnus angustifolia</i>	D	D	D	D	D	D
Scentless chamomile	<i>Matricaria maritima</i>	D	D	D	D	D	D
Scotch broom	<i>Cytisus scoparius</i>	A	A	A	A	A	A
Scotch thistle	<i>Onopordum acanthium</i>	B	A	B	B	A	A
Shiny geranium	<i>Geranium lucidum</i>	P	P	P	P	P	P
Spotted knapweed	<i>Centaurea maculosa</i>	D	D	D	D	D	D
St. Johns wort	<i>Hypericum perforatum</i>	C	C	C	B	B	B
Sulphur cinquefoil	<i>Potentilla recta</i>	D	D	D	D	D	D
Sweet fennel	<i>Foeniculum vulgare</i>	A	A	A	A	A	A
Tansy ragwort	<i>Senecio jacobaea</i>	A	A	A	A	A	A
Teasel	<i>Dipsacus fullonum</i>	A	A	A	A	A	A
Tree of Heaven	<i>Ailanthus altissima</i>	A	A	A	A	A	A
Velvetleaf	<i>Abutilon theophrasti</i>	A	A	A	A	A	A
Western goat's beard	<i>Tragopogon dubius</i>	D	D	D	D	D	D
Whiplash hawkweed	<i>Hieracium flagellare</i>	C	C	A	A	A	A
Wild 4 O'clock	<i>Mirabilis nyctaginea</i>	A	A	A	A	A	A
Wild chervil	<i>Anthriscus sylvestris</i>	A	A	A	A	A	A
Wild oats	<i>Avena fatua</i>	P	P	P	P	P	P
Wild parsnip	<i>Pastinaca sativa</i>	A	A	A	A	A	A
Yellow bedstraw	<i>Galium verum</i>	C	A	C	A	A	A
Yellow flag iris	<i>Iris pseudacorus</i>	B	B	B	B	B	B
Yellow hawkweed species		D	D	D	D	D	D
Yellow nutsedge	<i>Cyperus esculentus</i>	P	P	P	P	P	P

REGIONAL CONTAINMENT AREAS

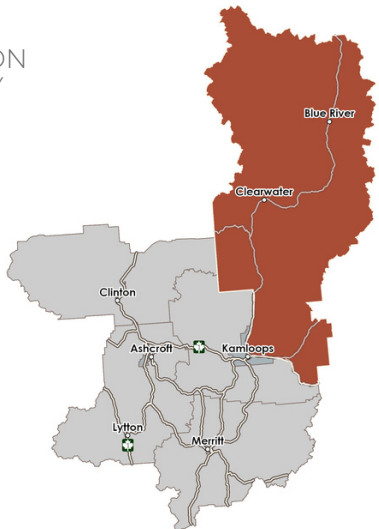
BABY'S BREATH



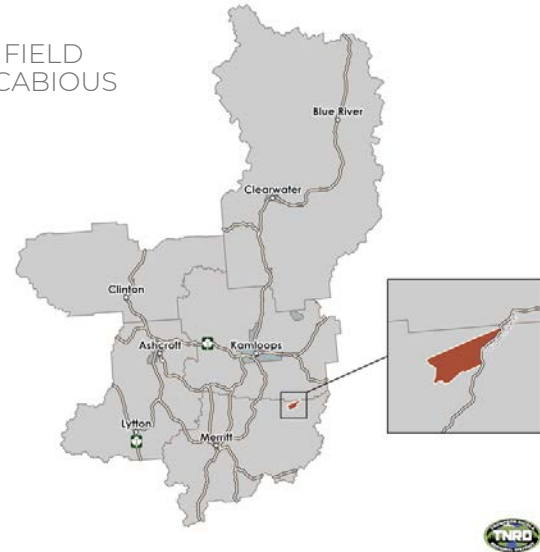
BLUEWEED



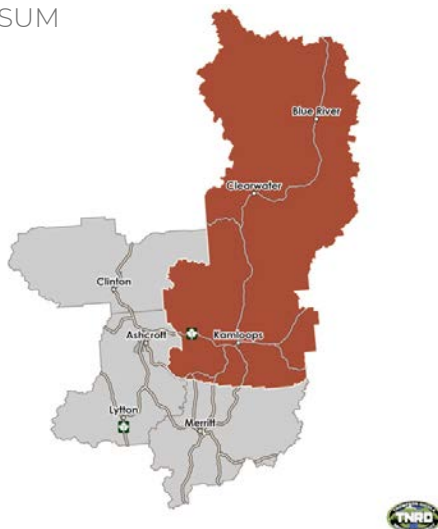
COMMON TANSY



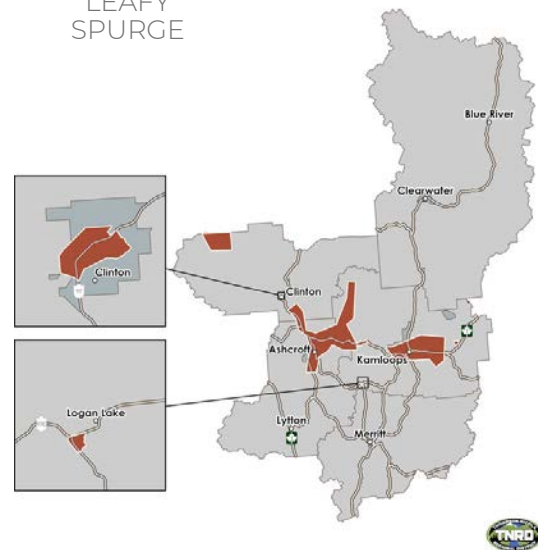
FIELD SCABIOUS



HOARY ALYSSUM

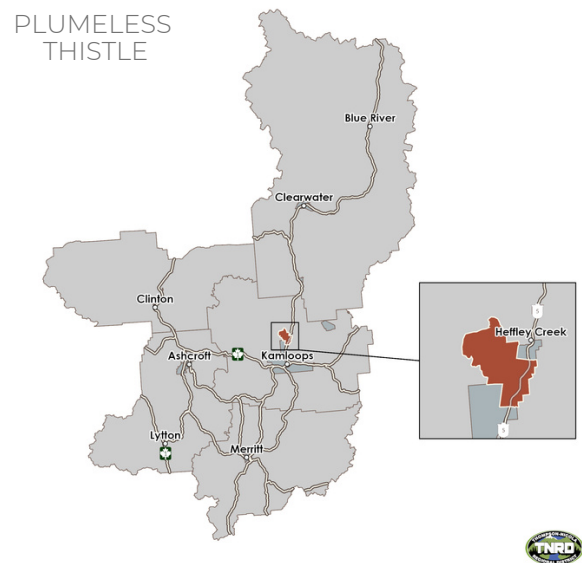
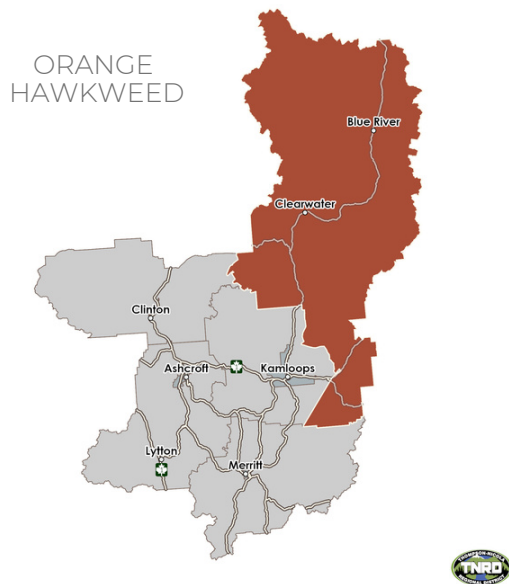


LEAFY SPURGE

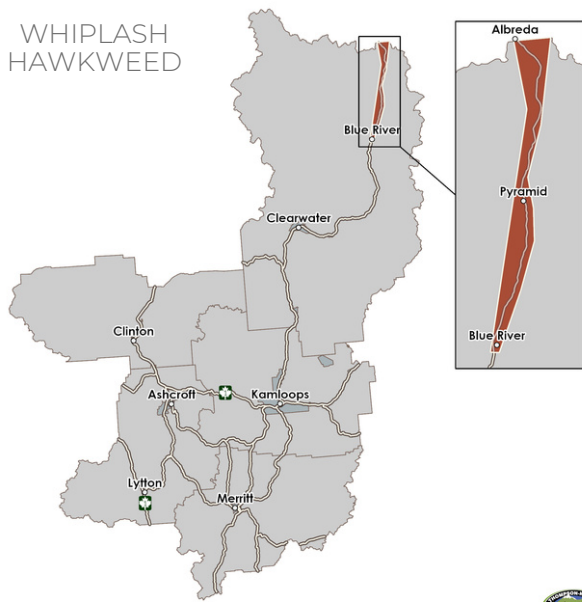


MEADOW
GOAT'S BEARD

NODDING
THISTLE



WHIPLASH HAWKWEED



YELLOW BEDSTRAW

