



Thompson-Nicola
INVASIVE PLANT
management committee

2024
TNIPMC
ANNUAL
REPORT

Myrtle spurge
Euphorbia myrsinites



THOMPSON-NICOLA
REGIONAL DISTRICT
The Region of BC's Best

ACKNOWLEDGEMENTS

The Thompson-Nicola Invasive Plant Management Committee (TNIPMC) gratefully acknowledges the financial support from the following agencies:

- Agriculture and Agri-Food Canada
- Ministry of Environment & Parks
- Ministry of Forests
- Ministry of Transportation & Transit
- Thompson-Nicola Regional District



MEET THE TEAM

TNIPMC Committee Members

Jill Hayward, TNRD (Chair)
Doug Haughton, TNRD (Vice Chair)
Herb Grahame, TNRD
Holly Campbell, BC Cattleman's Association
Stephanie Russell, Ministry of Environment & Parks
Sheryl Wurtz, Ministry of Forests
Derek Hogan, Ministry of Forests (Alternate)
Grahame Gielens, Ministry of Transportation & Transit
Kristi Gordon, Grasslands Conservation Council of BC
Mike Dedels, Grasslands Conservation Council of BC (Alternate)
Peggy Jo Broad, Thompson Rivers University
Wendy Gardner, Thompson Rivers University (Alternate)

TNRD Staff

Jamie Vieira- General Manager of Operations
Kevin Skrepnek- Manager of Community & Emergency Services
Coleen Hougen- Integrated Pest Management Supervisor
Jollee Perrier- Integrated Pest Management Technician
Jake Gysel - Integrated Pest Management Summer Student
Michelle Kozuchar - Recording Secretary

Contracted Support Staff

Catherine Tarasoff- TNIPMC Education & Outreach Coordinator
Rayn Deppening- TNIPMC Education & Outreach Assistant



Fuller's Teasel
Dipsacus fullonum

A MESSAGE FROM THE CHAIR



JILL HAYWARD

TNIPMC Chair
TNRD Director for Electoral Area O

The Thompson-Nicola Invasive Plant Management Committee (TNIPMC) ‘dug deep’ to work towards our vision of “an invasive plant-free Thompson-Nicola region”.

Our dedicated team was busy this year sharing invasive plant information across the region, either in person at events, or indirectly through social media. Collectively we were able to reach ~45,500 people with targeted invasive plant messaging.

Some of the highlights of this year include the continued delivery of the “Earth Kids Program” to schools and select BC Parks within the region. This is youth engagement program that encourages students and recreationalists to become stewards of the land. We reached an impressive 900 youth through this program.

We also hosted another successful annual field day in Little Fort sharing information about key invasive plants in the area, such as common tansy and hoary alyssum. In addition, we delivered an informative community workshop in Knutsford focusing on yellow bedstraw; there were over 50 community members in attendance. We also launched our first ever regional invasive plant e-newsletter titled “Taking Root”.

Regarding coordination efforts, the TNIPMC continued to support work across jurisdictions and work towards common goals. We held another successful regional land managers meeting with 26 different organizations in attendance. The meeting offered participants an opportunity to share information on management activities, coordinate efforts where possible and offer networking opportunities. The TNIPMC continued to support broader coordination across the province through active participation on the province-wide regional invasive species working group.

Finally, the TNIPMC continued to act as a collective voice to escalate concerns pertaining to invasive plant management and/or policy in the region. TNRD delegates from the TNIPMC were able to meet outgoing senior provincial Ministry staff in person at the Union of BC Municipalities annual conference. The TNRD was also able to write letters to the new ministers in the fall. Our key messaging remains the same: the need for long-term stable funding for invasive plant management on Crown land.

On behalf of the TNIPMC, I would like to extend my deepest gratitude to our staff, partners and members of the public who are working towards an invasive-free region. It’s the passion and commitment of these folks that continue to drive us forward.

- Jill Hayward

ABOUT THE TNIPMC



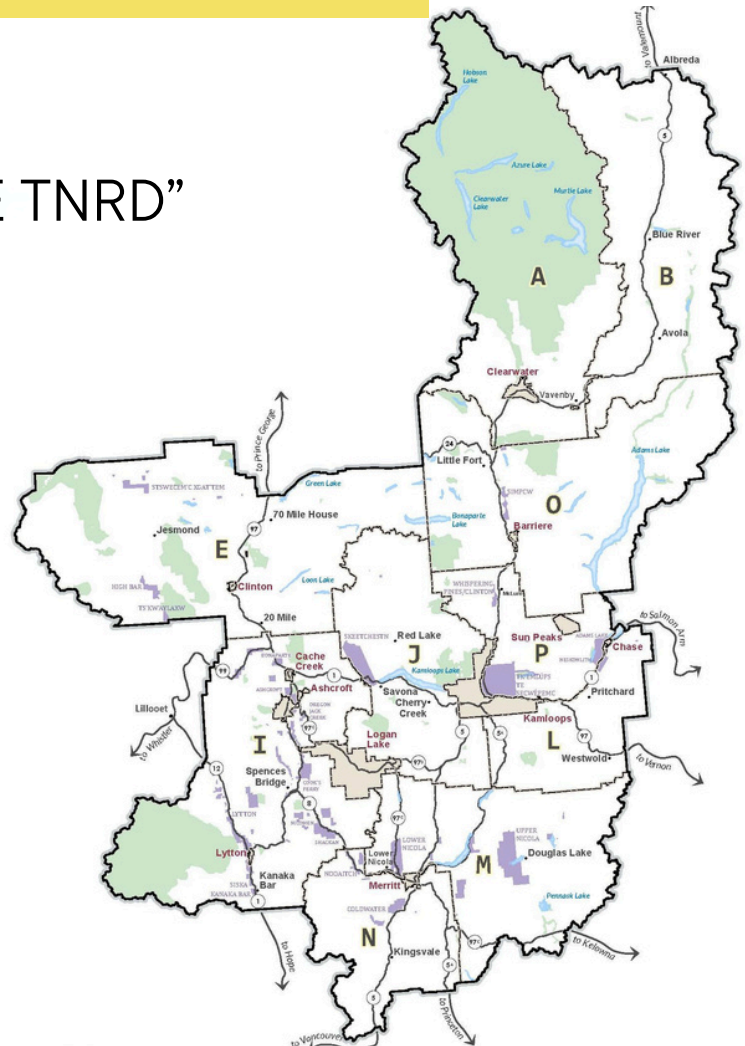
VISION

“AN INVASIVE PLANT-FREE TNRD”

MISSION

Our mission is to facilitate partnerships to reduce the adverse economic, social and environmental impacts of terrestrial invasive plants within the Thompson-Nicola Regional District.

We take action by coordinating invasive plant management efforts, and we prevent further invasive plant introduction and spread through education and outreach.



EDUCATION & OUTREACH



The TNIPMC takes pride in enhancing regional invasive plant knowledge through effective communication, education and outreach. This year, the Committee delivered consistent messaging about invasive plants across the region to a variety of audiences, including youth, recreationalists, ranchers and members of the public. Key efforts included the delivery of the Earth Kids and Community Weed Pull programs. The TNIPMC also delivered numerous workshops, including a community workshop in Knutsford, two yellow flag iris management workshops at Lac Des Roche and Phillips Lake, and the TNIPMC annual field day in Little Fort.

SCHOOL PROGRAM

39 presentations
845 students reached

EARTH KIDS - BC PARKS

6 presentations
63 people reached

Monck Provincial Park

COMMUNITY EVENTS

60 events
2,057 people reached

WEED PULL PROGRAM

5 weed pull events
173 volunteers

Jeffrey Creek Community Association



41,000 Website Views



95 General Inquiries



35,830 People Reached



127 Events Attended

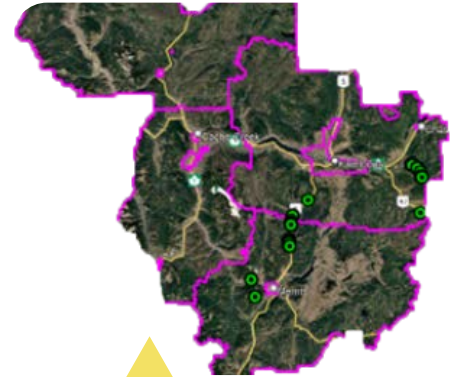
TARGETED SURVEYS

Each year, the TNIPMC carries out targeted invasive plant surveys within the region. These are completed to ensure regional data is current, enabling informed management decisions. This year, surveys focused on wild chervil and wild four o'clock. The wild chervil surveys took place along highway 5 near Surrey Lake and along numerous roads south of Chase. The wild four o'clock surveys took place along highway 1 between Spences Bridge and Lytton.

WILD CHERVIL



HWY 5 near Surrey Lake



Wild chervil distribution

WILD FOUR O'CLOCK



HWY 8



Wild four o'clock distribution

Mystery Solved-ish!

Cocklebur has been known in the Thompson-Nicola region for some time, however the species of cockle bur has remained a mystery- until now! This year, the TNIPMC had specimens from French Bar Creek, Churn Creek and Savona positively identified by the Royal BC Museum as *Xanthium strumarium*. There is no strong evidence on the origin of this species; whether or not it is invasive to the region is another mystery to be solved.



Common Cocklebur, French Bar Creek



Churn Creek Protected Area

ON THE GROUND MANAGEMENT

Within the TNIPMC’s operating area, there are numerous agencies and organizations that are dedicated to carrying out annual operational invasive plant management. The collective coordinated efforts of these groups is moving us jointly towards the goal of keeping the Thompson-Nicola region free of invasive plants. The information below summarizes operational activities completed by several land managers in the region.

REGIONAL OPERATIONAL OUTCOMES



2,439
Invasive Plant Observations



63.3

Hectares Treated



\$975,630
Invested in Management



Manual removal of blueweed along HWY 5



BC HYDRO

BC Hydro continued its partnership with the TNRD to deliver invasive plant management activities on BC Hydro right-of-ways. Management goals included enhanced inventory and management of several high priority infestations. This year, a total of 72 km of right of ways were surveyed resulting in 57.2 hectares of invasive plants observed. Key treatments included blueweed infestations north of Lower Nicola and south of Clinton. BC Hydro also worked with private land owners to support with management on hydro right of ways that intersect with private land.

129 Invasive Plant Observations
14 Treatments
1.2 Hectares Treated

BC PARKS

BC Parks continued its partnership with the TNRD to carry out invasive plant management activities in the following provincial parks: Downing, Epsom, Neskonlith, Roche Lake, Steelhead, Monte Creek, Walloper, Chasm, Churn Creek and Lac Du Bois. Management activities varied by park and included either surveys, chemical or mechanical treatment or biological control dispersal monitoring. Highlights this year include working with the Friends of Churn Creek to coordinate treatment in the protected area and monitoring biocontrol agent establishment for leafy spurge in Epsom Provincial Park.



282 Invasive Plant Observations
122 Treatments
3.7 Hectares Treated

53 Kilometers of Right of Way Surveyed
110 Invasive Plant Observations
3.7 Hectares of area infested

FORTIS BC

This was the first year Fortis BC partnered with the TNRD. Management activities focused on surveying select right of ways to get a better understanding of the current invasive plant distribution along the transmission lines. The TNRD surveyed 53 km of right of way along 6 different FortisBC lines located throughout the region.

NATURE CONSERVANCY OF CANADA

The Nature Conservancy of Canada's (NCC) invasive plant management objective is to reduce the threat of invasive plant species on NCC's Conservation Areas throughout the TNRD, in order to promote greater ecosystem resilience and enhance biodiversity on these critical landscapes.

35 Invasive Plant Observations
59 Treatments
68 Hectares Treated

MINISTRY OF FORESTS

One of the Ministry of Forest's (MoF) key goals for invasive plant management is to identify and systematically eradicate, or control new invasive plants before they reproduce, and populations expand. This year, MoF was able to monitor and manage several early provincial detection and rapid response (PEDRR) species in the region. These included black henbane, perennial pepperweed and European common reed.



European Common Reed (PEDRR) near Kamloops

This was the first year that the MoF partnered with the TNRD to assist with administering invasive plant management on Crown Land. Management efforts included managing several regional priority invasive plants throughout the region, including but not limited to, fernleaf yarrow, field scabious, teasel, hoary cress Himalayan balsam, Queen Anne's lace, and rush skeletonweed.

Additional Good Neighbour treatments were administered across 0.45 hectares of Crown land that bordered a large aerial treatment KGHM Ajax completed on their land.

Also, invasive plant surveys and targeted treatments were completed within 8 priority gravel pits.

Finally, MoF continues to work closely with local First Nations, such as the Adams Lake Indian Band, supporting them with resources to carry out invasive plant management activities on First Nation lands.



Orange hawkweed, Billy Lake Rec Site

Did You Know?

Through the **Good Neighbour Program**, MoTT & MoF will treat right-of-ways adjacent to properties that are being actively managed for invasive plants!



321
Invasive Plant
Observations

129
Treatments

4.3
Hectares
Treated

MINISTRY OF TRANSPORTATION & TRANSIT

The Ministry of Transportation and Transit (MoTT) continued its partnership with the Invasive Species Council of BC to administer treatments within MoTT gravel pits, and with the TNRD to administer invasive plant management activities on MoTT right of ways.

Management efforts focused on treatment of provincial and regional priority plants, including but not limited to, bighead knapweed, fernleaf yarrow, marsh plume thistle, myrtle spurge, poison hemlock, and wild chervil.

MoTT continued to administer its Good Neighbour program. There were a total of 74 Good Neighbour treatment requests and management took place across 74 km of road right of way.



1,058 Invasive Plant Observations
591 Treatments
12.5 Hectares Treated



AREAS SURVEYED

- Long Lake & Edith Lake roads- field scabious
- Agate Bay road- Queen Anne's lace
- Holmwood & Robbins Range roads- Scotch thistle
- Highway 5- Russian knapweed, orange hawkweed, blueweed
- Big Bar road- Queen Anne's Lace, common cocklebur

NEW REPORTS!



Wild parsnip- Martin Prairie road, HWY 1 near Cache Creek



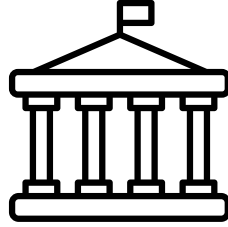
Purple loosestrife, HWY 1 west of Kamloops



Dames rocket, HWY 1, near Chase and HWY 5 near McLure

THOMPSON-NICOLA REGIONAL DISTRICT

The Thompson-Nicola Regional District (TNRD) partnered with BC Hydro, FortisBC, Ministry of Forests, Ministry of Transportation and Transit and the Ministry of Environment and BC Parks to assist them in administering on the ground



invasive plant management activities throughout the region. Management activities included treatment monitoring, surveys, and biological control dispersal monitoring,

The TNRD also continued delivery of its invasive plant program services to its residents, and residents of select member municipalities that opted into the program. There were 215 program participants that took part in treatment rebates, sprayer loan outs, private land consultations, and biological control treatments. The TNRD would like to thank residents for taking part in these programs and managing invasive plants on their private properties.

In addition, the TNRD surveyed and treated 19 TNRD solid waste disposal facilities for invasive plants. A total of 122 invasive plant observations were made and 133 treatments were completed over 3.5 hectares. The TNRD continued to waive disposal fees for invasive plants and has now has designated invasive plant bins at the following facilities: Lower Nicola Eco-Depot, South Thompson Eco-Depot and Heffley Creek Eco-Depot.



43 METRIC TONS
of invasive plants were disposed of in TNRD solid wastes facilities!

TNRD staff hand picking Canada thistle biological control agents



72
Land Consultations



87
Sprayer Loan Outs



\$343,128
Invested in private land treatments



\$73,703
in rebates



1,420
biocontrol agents distributed

COMMUNICATION



ADVOCATING FOR THE CAUSE

Despite it being a provincial government election year, the TNIPMC still made efforts to communicate with select provincial government agencies, including the Ministry of Forests, Transportation and Transit, and BC Parks. Efforts included in person meetings with senior provincial staff at the Union of BC Municipalities conference and written letters to the newly appointed Ministers. The TNIPMC's recommendations to these provincial agencies remains the same:



Increased and continuous funding for invasive plant management on Crown land within the Thompson-Nicola Region.

SOCIAL MEDIA

The TNIPMC continues to expand its presence on social media focusing on delivering content through Facebook and Instagram. The TNIPMC created a brand new e-newsletter, title *Taking Root*. The e-newsletter was shared with 72 subscribers and promoted upcoming events, weed-of-the-month, hot topics of the season, and local news about invasive plants. The TNIPMC had an extensive schedule of social media campaigns that ran throughout the spring, summer and early fall reaching an impressive 32,600 people.



Blueweed

144 Posts

833 Followers

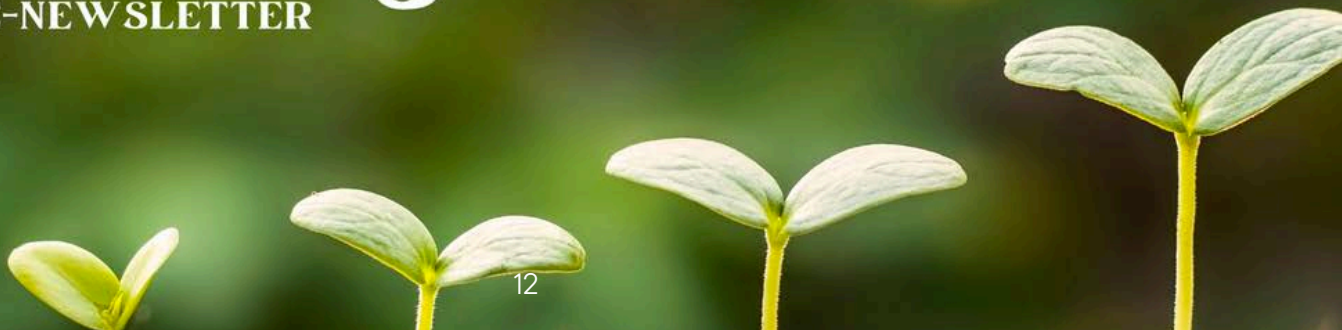
32,600 People reached



Taking Root

E-NEWSLETTER

72
Subscribers



COORDINATION



One of the key functions of the TNIPMC is to ensure effective coordination and communication mechanisms for identifying mutual priorities, and effectively sharing information with other land managers. This is achieved through establishing an alliance of partners working across jurisdictions toward mutual goals. The following summarizes coordination efforts taken by the TNIPMC in 2024.

TNIPMC & the Lillooet Invasive Species Society Coordinating Efforts in Edge Hills Provincial Park

REGIONAL OPERATIONAL PLAN

The TNIPMC is responsible for administering the *Operational Plan for Terrestrial Invasive Plants in the Thompson-Nicola Region*. The Committee carried out its annual review of the plan which entailed a review of the current regional priority invasive plants and their management objectives. The management objectives for several species were modified based on recent changes of distribution in the region. Dames rocket was the only new plant added to the regional list as an ‘Eradicate’ species. There were no species removed from the list. The TNIPMC also continues to monitor the success of the operational plan each year through analyzing regional data from the provincial invasive species database, InvasivesBC.



Grassland Conservation Council Community Workshop at Big Bar

Meeting Highlights

- Enbridge Sunrise Expansion Project: plans to add an additional 147km of pipeline through the region and how they will mitigate impacts, including the introduction and spread of invasive plants.
- BC Provincial update on the new *Provincial Invasive Plant Pest Management Plan for Southern and Coastal BC 2024- 2029*.
- Inter Ministry Invasive Species Working Group: An update on their new strategic plan and a feasibility study for a provincial soil certification.

ANNUAL LAND MANAGERS MEETING

The TNIPMC hosted its annual land manager meeting on March 4, 2024. The goal of the meeting was to bring land managers across the region together to share their operational plans for 2024 and coordinate activities where possible. A total of 28 people attended the meeting with representatives from Provincial and local governments, non-profit organizations, Indigenous groups, industry and private companies. A total of 26 different organizations were represented at the meeting.

COORDINATION

THOMPSON NICOLA CONSERVATION COLLABRATIVE

The TNIPMC actively participated in the Thompson Nicola Conservation Collaborative's development of a Conservation Action plan (CAP) for the Thompson Watershed. The CAP provides a framework for partners to work together to identify and co-invest in shared priority actions that would contribute to maintaining healthy fish and wildlife populations, plants and habitats, and ecological functions in the Thompson-Nicola region. The TNIPMC has been assisting with the development of a roadmap for future conservation efforts focused on sustainable agriculture.



Nature Conservancy of Canada, TNRD/TNIPMC, and Grasslands Conservation Council of BC coming together at the TNRD board tour.

FRIENDS OF LAC DU BOIS

The TNIPMC is an active participant with the Friends of Lac Du Bois. This group meets several times per year to discuss management priorities within the Lac Du Bois Protected Area and coordinate activities where possible. This group is working together to protect the environmental values within this area.



Russian knapweed surveys in Lac du Bois

REGIONAL INVASIVE SPECIES ORGANIZATION NETWORK

The TNIPMC continues to actively participate in the province-wide regional invasive species organization working group (RISOWG). This group meets monthly to discuss invasive species topics, share ideas and take joint action where necessary/possible. The outcome of these meetings has resulted in increased joint management efforts and shared knowledge to improve invasive plant management, education and outreach within BC. This fall, the Coastal Invasive Species Society hosted the annual RISOWG meetings and fall tour in Parksville. TNIPMC staff attended and learned about some of the issues faced on the island, including managing giant hogweed, knotweed, spartina and invasive geese!



Spartina Control at Argyll Road Beach Access, RISOWG Field Tour in Parksville



HIGH PRIORITY INVASIVE PLANTS

These plants are present in limited distribution in the Thompson-Nicola region.

REPORT ALL SIGHTINGS !

Email: invasiveplants@tnrd.ca

Phone: 1-877-377-8673



Black Henbane

(Hyoscyamus niger)

Areas Found: Cache Creek, Darfield, Pritchard



Common bugloss

(Anchusa officinalis)

Area found: Black Pines



Common Reed

(Phragmites australis)

Areas Found: Kamloops, Walhachin



Purple loosestrife

(Lythrum salicaria)

Area Found: Kamloops, Westwold



Fernleaf Yarrow

(Achillea filipendulina)

Area Found: Clearwater, Merritt



Himalayan Balsam

(Oenothera biennis)

Areas Found: Turtle Valley, Darfield



Myrtle Spurge

(Euphorbia myrsinites)

Area Found: Shuswap Rd, Savona, Kamloops



Perennial Pepperweed

(Lepidium latifolium)

Areas Found: Walhachin



Queen Anne's Lace

(Daucus carota)

Area Found: Little Fort, Kamloops, Agate Bay



Wild Caraway

(Carum carvi)

Area Found: Little Fort, Logan Lake, Adam's Lake



Wild Four O'clock

(Mirabilis nyctaginea)

Area Found: Cherry Creek, Spences Bridge



Wild Parsnip

(Pastinaca sativa)

Areas Found: Cache Creek, Darfield, Pritchard



Bull thistle
Cirsium vulgare

Thompson-Nicola Regional District
#300-465 Victoria Street
Kamloops, BC. V2C 2A9

Email: invasiveplants@tnrd.ca | Phone: 1-877-377-8673



THOMPSON-NICOLA
REGIONAL DISTRICT